



Directv Remote Teardown

Written By: Ashley





TOOLS:

- [Phillips #00 Screwdriver](#) (1)
 - [Flathead Screwdriver](#) (1)
-

Step 1 — Starting off



- First off, take off the back and then remove the battery cover. Take out the batteries. Then grab your screwdriver and take out the two screws.

Step 2 — Pop off



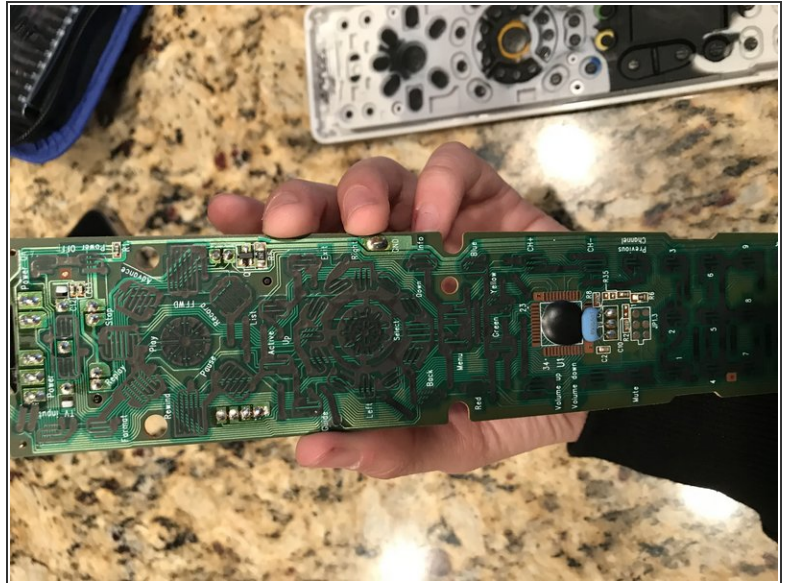
- Use a flathead or some kind of tool to pop of the darker grey part that's around the main buttons.
- **BE CAREFUL WHILE DOING THIS BECAUSE YOU MIGHT END UP DAMAGING THE REMOTE AND BREAK IT**

Step 3 — Unscrew



- Use the same screwdriver from before and unscrew the four screws on the top and bottom sides.
- Next, get a flathead screwdriver or something else to help you pry apart the two pieces.

Step 4



- Separate the two pieces from each other.
- *At the top of the brown side of the mother board, there are some lights. Those lights are invisible to the human eye. On the tv and sometimes the tv box, there's sensors that detect the light and then would tell the tv what to do, such as lower the volume or change the channel.*
- *When you press a button, it'd go through the remote, go and turn on the light and pass signals to the tv.*

Step 5 — You're basically done



- Remove the button sheet and then you are done!