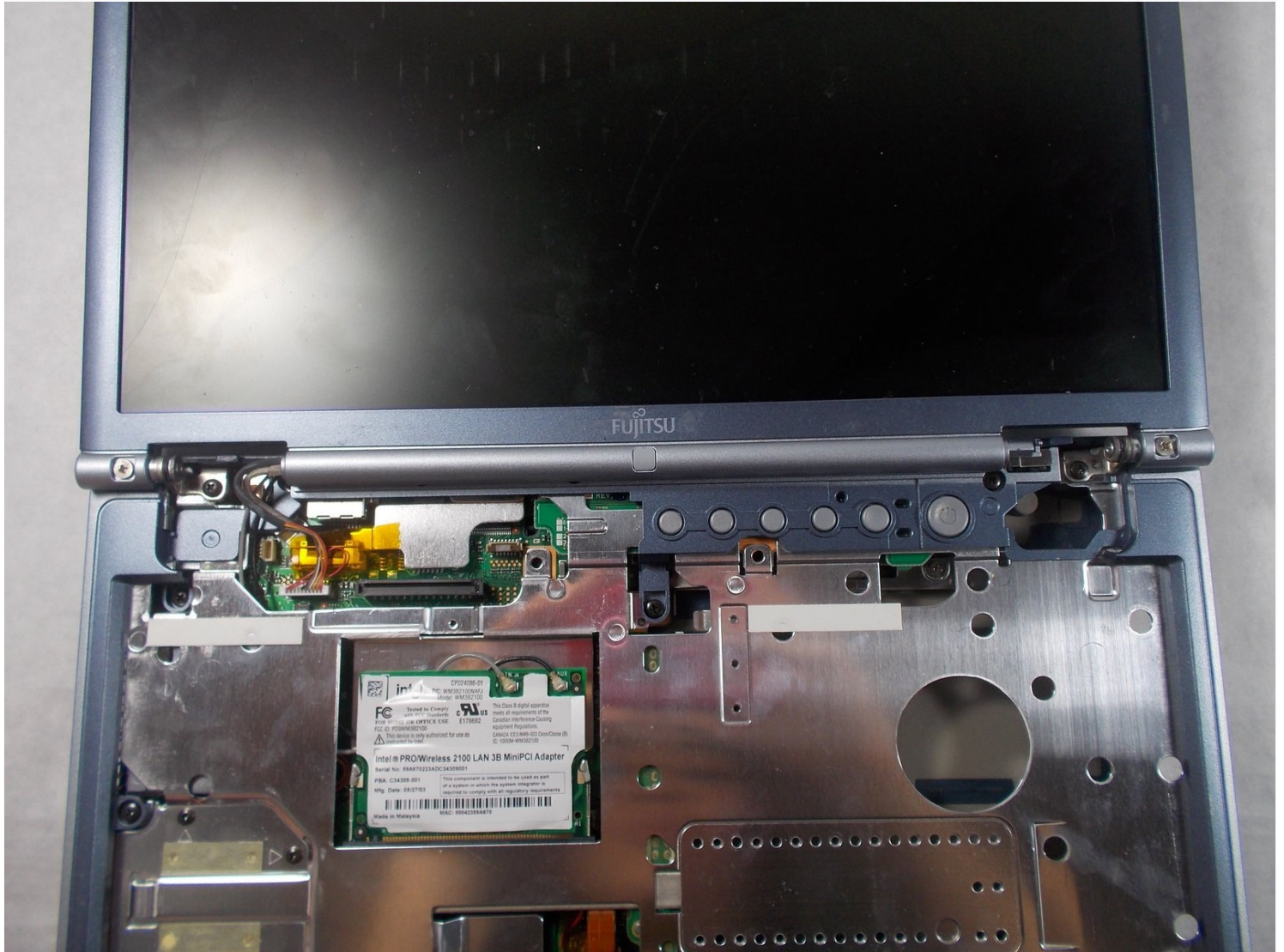




Fujitsu Lifebook S6120 PCI Adapter Replacement

If your Lifebook won't connect to a wireless...

Written By: Jaimie Nakamura



INTRODUCTION

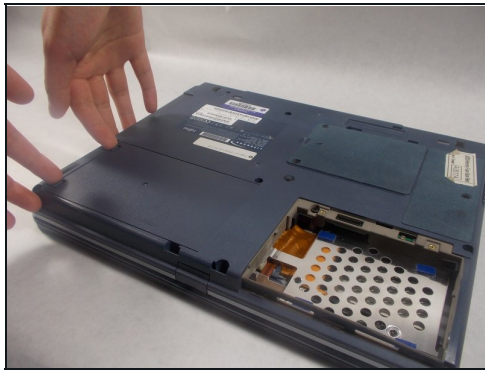
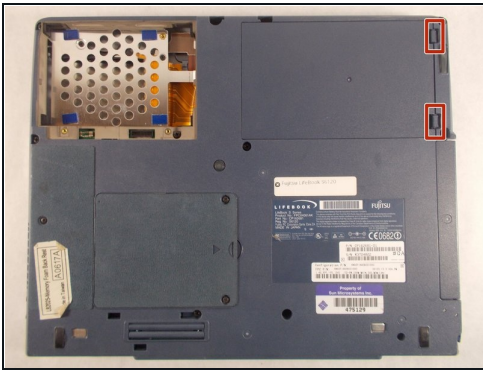
If your Lifebook won't connect to a wireless network this guide will show you how to replace a wireless adapter so your Lifebook will get a signal.

TOOLS:

Spudger (1)

Tweezers (1)

Step 1 — Battery



 To prevent injury, make sure the laptop is unplugged and turned off before removing the battery.

- Push the two tabs in towards the laptop.
- Lift the battery up and out from the frame of the laptop.

Step 2 — Hinge Cover



- Use a plastic opening tool to lift the back of the hinge cover on the left and right sides of the computer.

Step 3



- Lift the hinge cover.

⚠ The hinge cover is connected to the motherboard by a ribbon cable. To prevent damage, lift hinge cover slowly.

Step 4



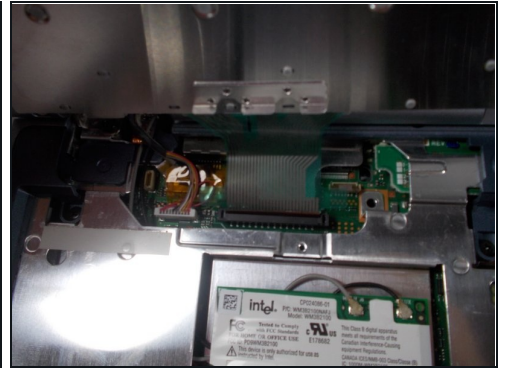
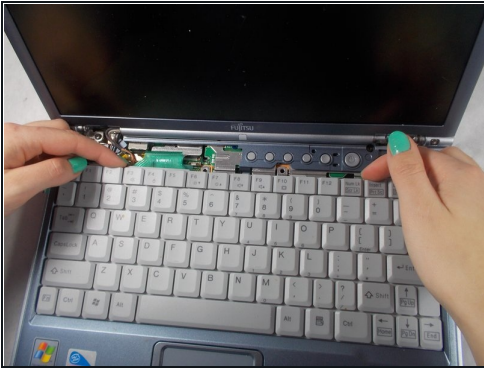
- Use the [tweezers](#) to disconnect the ribbon cable from the motherboard.

Step 5



- With the tweezers detach hinge cover cables from the motherboard.
- Remove hinge cover.

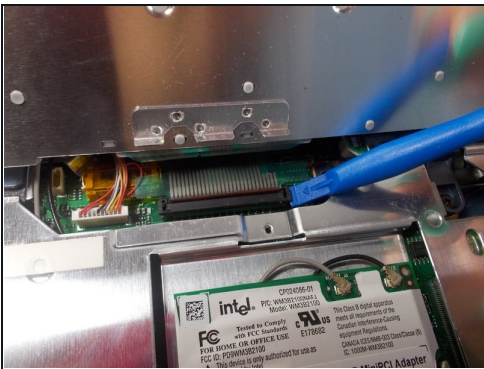
Step 6 — Keyboard



- Lift keyboard enough to show the ribbon cable.

⚠ The keyboard has a ribbon cable attached to the motherboard. Lift keyboard carefully to prevent damage.

Step 7



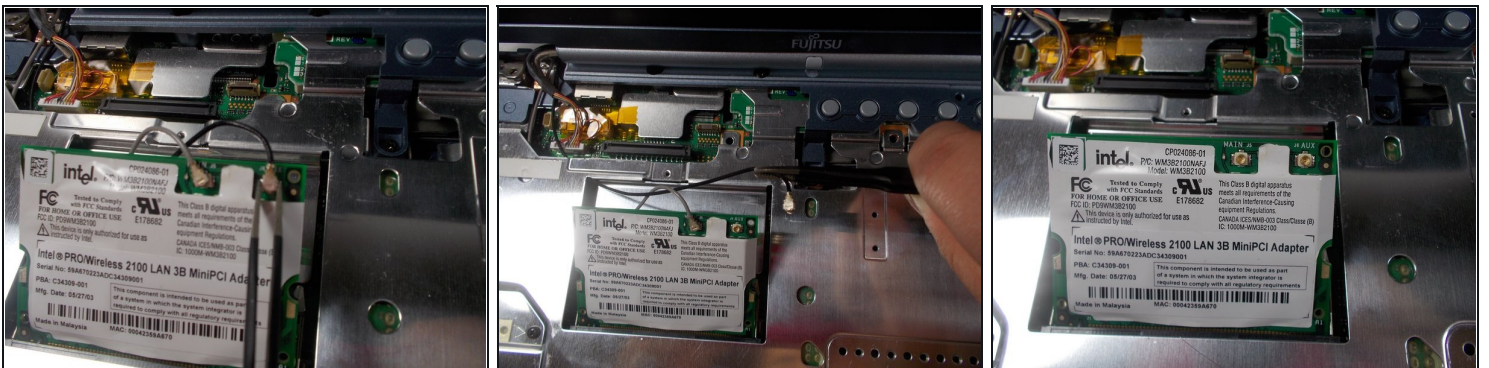
- Use a plastic opening tool to release the ribbon cable from the motherboard.

Step 8 — PCI Adapter



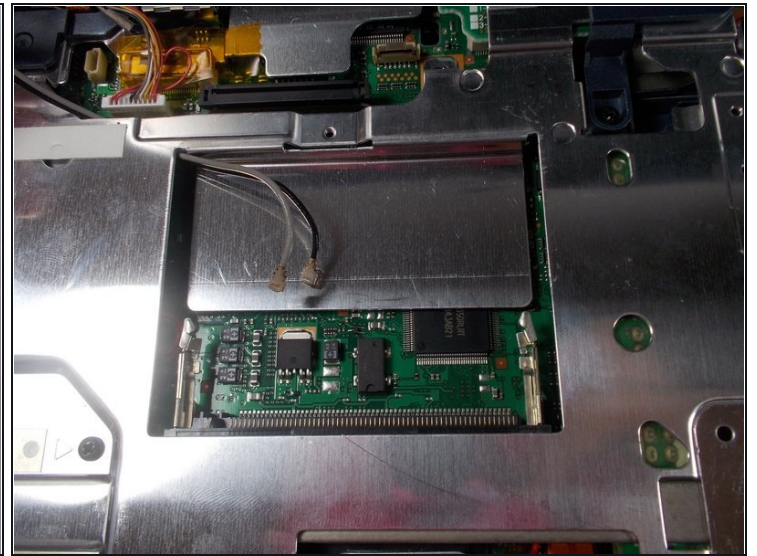
- Push the secure clips outward.
- The Adapter should pop up.

Step 9



- Use [tweezers](#) to remove the wires from the Adapter.

Step 10



- Take out the Adapter and carefully pull the wires out from the metal casing.

To reassemble your device, follow these instructions in reverse order.