



Acer Aspire 6530-6522 Power Board Replacement

Use this guide to replace the Power Board on your Acer Aspire 6530-6522. This is the small circuit board directly under the power button.

Written By: William Michaud



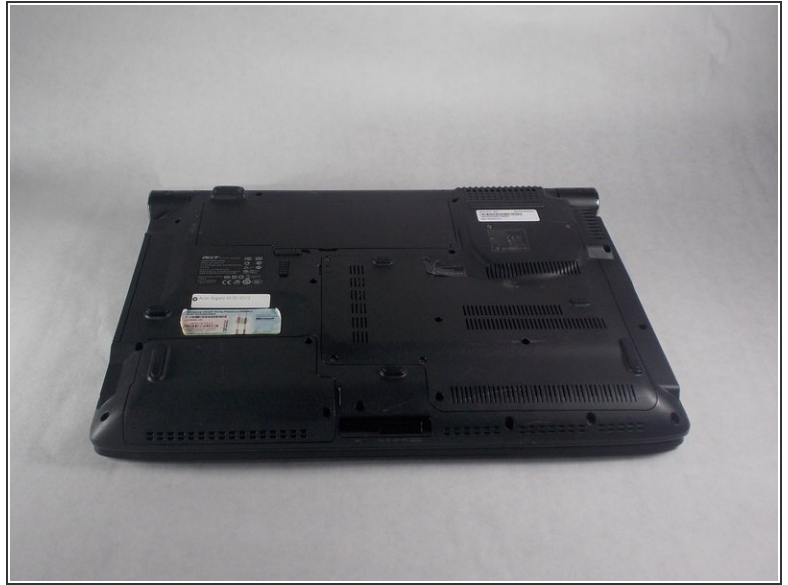
INTRODUCTION

This guide will show you how to remove the power board under the power button on your Acer Aspire 6530-6522. You will need to do this if it becomes faulty or gets damaged.

TOOLS:

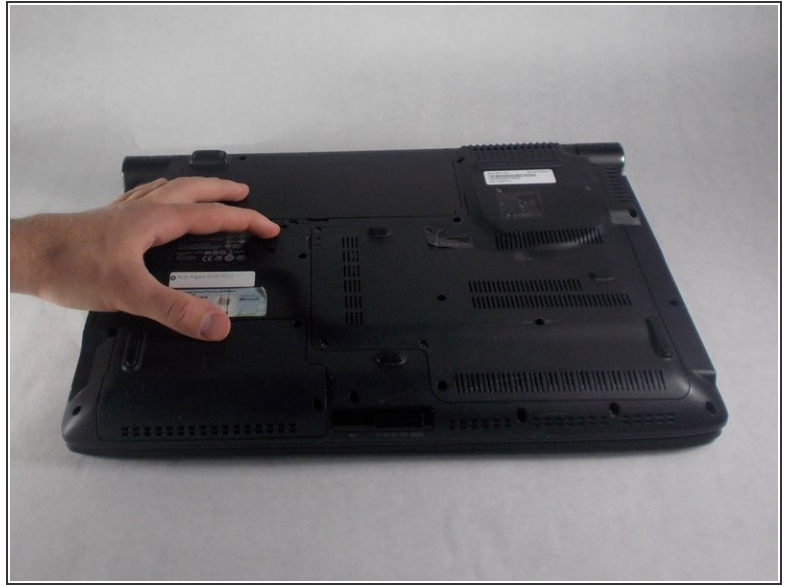
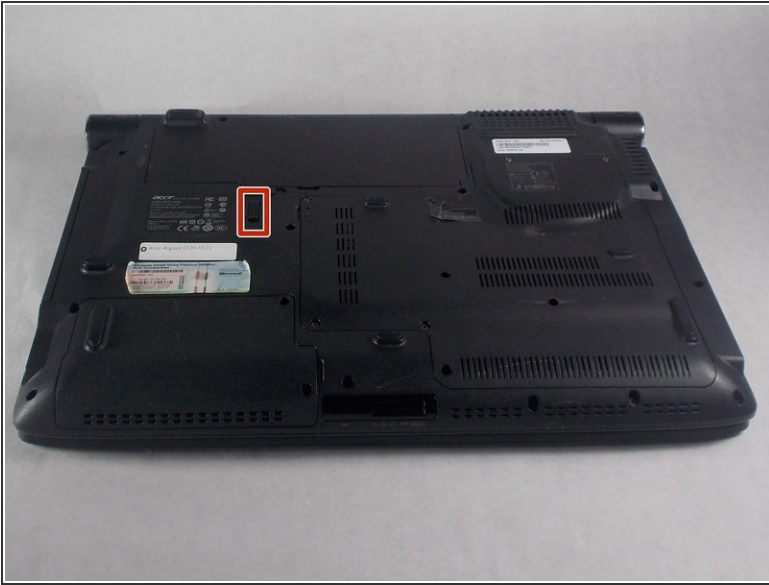
- [iFixit Opening Tools](#) (1)
 - [Tweezers](#) (1)
 - [Phillips #1 Screwdriver](#) (1)
-

Step 1 — Battery



- Make sure the device is unplugged and completely powered down.
- Turn the device over.

Step 2



- The lock switch can slide either towards or away from the battery. If it is pushed towards the battery, the release switch is locked and the battery can not be released.
- Slide the switch away from the battery.

Step 3



- The battery release switch is just to the inside of the battery and slides parallel to it.
- Push the switch to the side. It is not just an open or close switch, it actually pops the battery up so you will feel some resistance.
- ☑ When inserting a battery back into the device, you do not need to touch this switch. Just press the battery firmly down, you will see and hear this switch catch.

Step 4



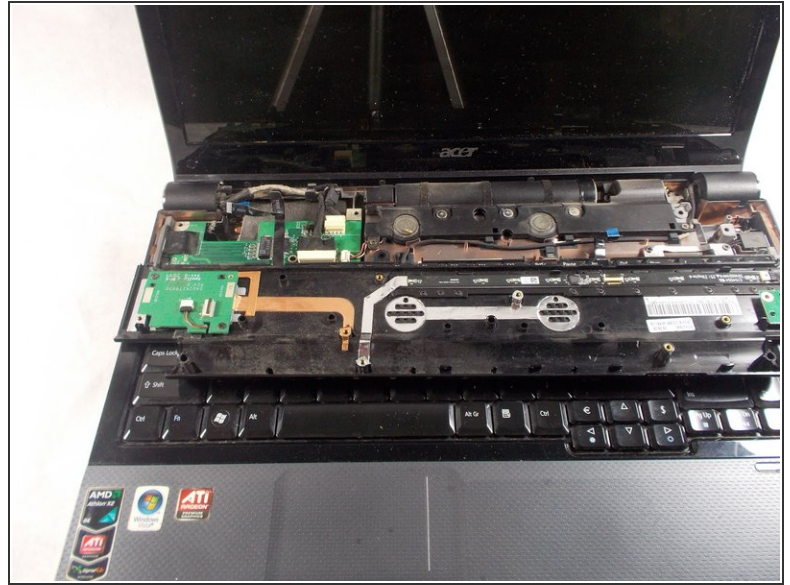
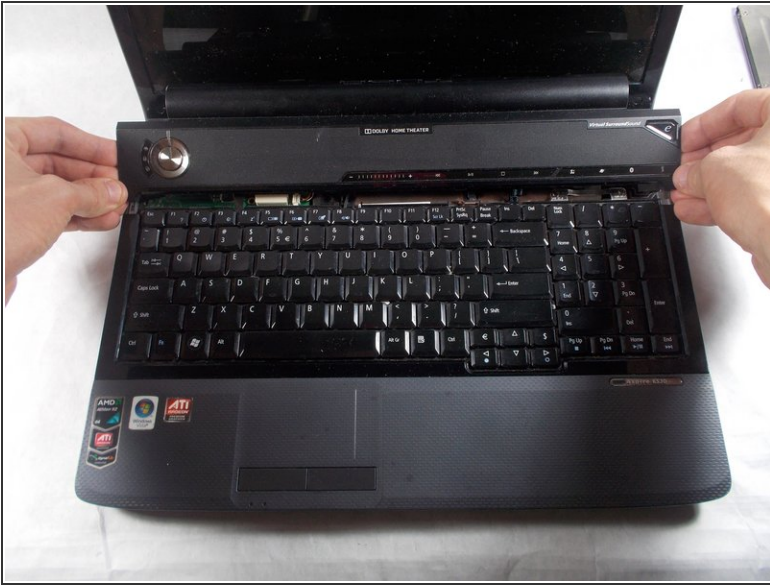
- Pull the battery up and out. Use a plastic opening tool if necessary.

Step 5 — Power Board



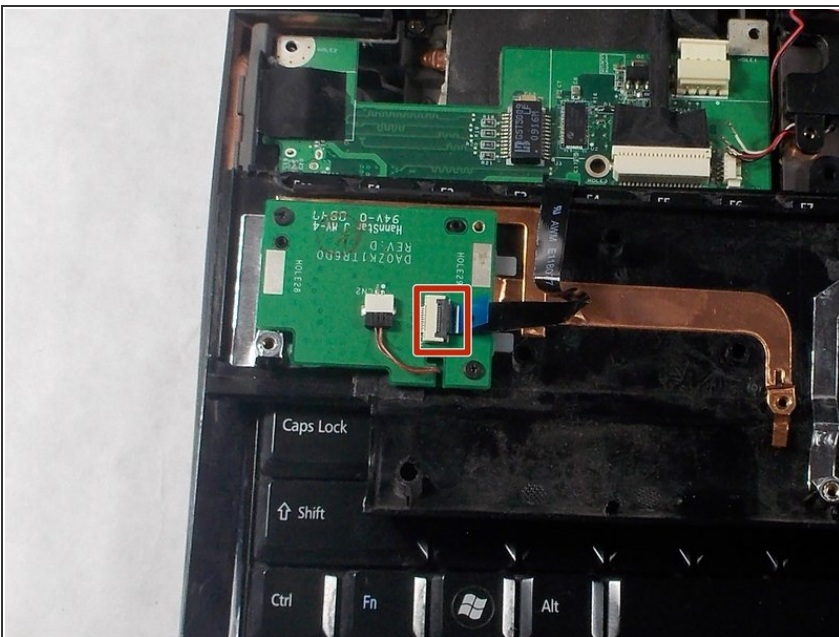
- Using the Phillips #1 screwdriver, remove the ten 7mm screws in the bottom of the device that are holding the top panel.
- Turn the device over and open it.

Step 6



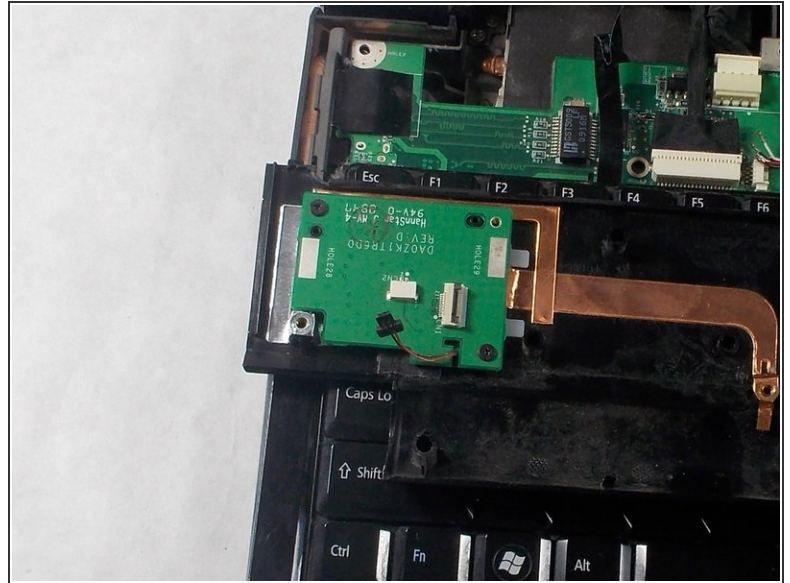
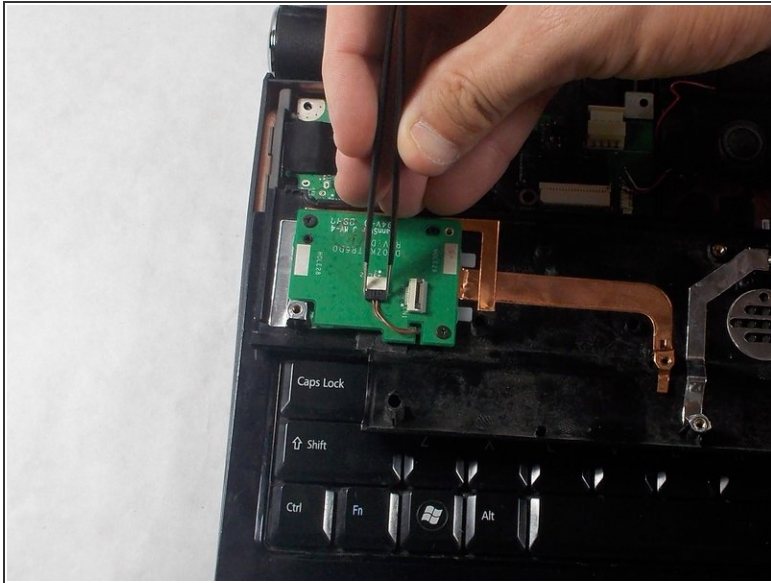
- Lift the top panel up from the back, turning it over forward.

Step 7



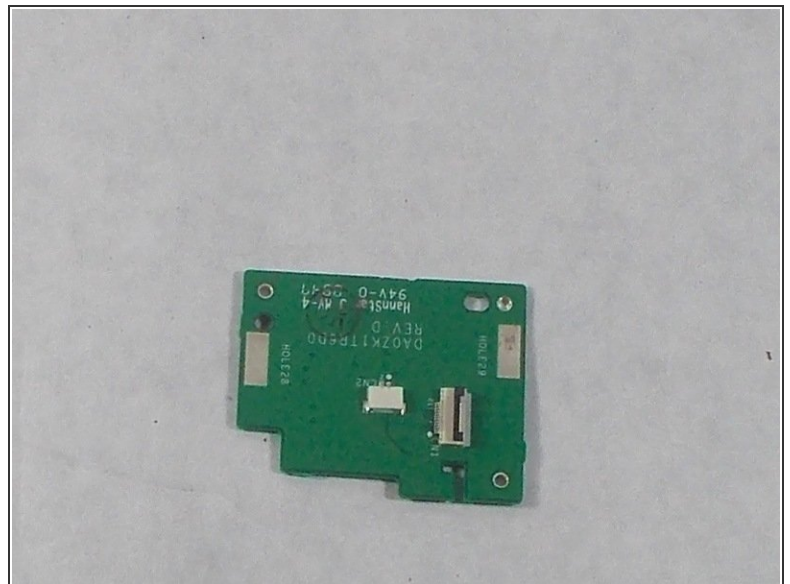
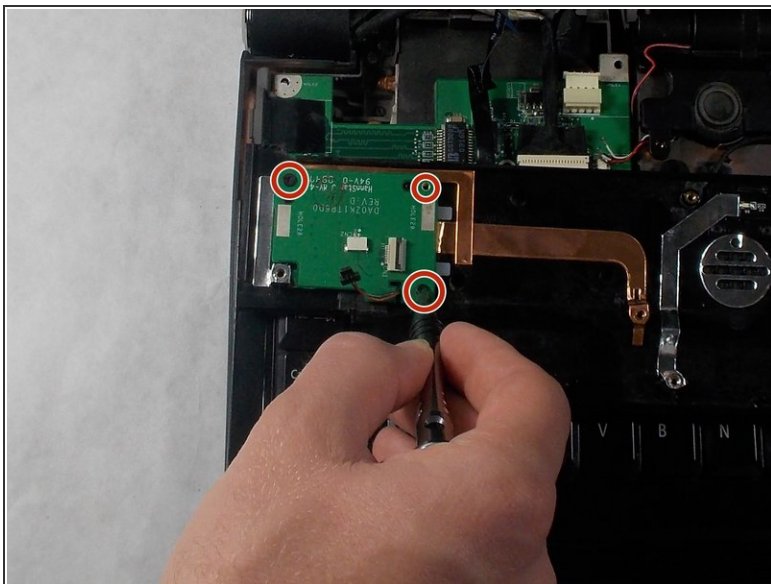
- Lift the latch locking the cable.
- Pull the cable free.

Step 8



- Pull the cable towards you to unplug it. Use tweezers if necessary.

Step 9



- Using the Phillips #1 screwdriver, remove the three 3mm screws from the power board.
- Lift power board to remove it.

To reassemble your device, follow these instructions in reverse order.