



Dell Inspiron N4110 Hard Drive Replacement

Does your hard drive appear to be failing or...

Written By: Abigail Keith



INTRODUCTION

Does your hard drive appear to be failing or need a replacement? This guide will help you replace the hard drive in several simple steps.

TOOLS:


[Phillips #1 Screwdriver](#) (1)
[iFixit Opening Tool](#) (1)

PARTS:

[Crucial MX500 1 TB SSD](#) (1)
[Crucial MX500 250 GB SSD](#) (1)
[Crucial MX500 500 GB SSD](#) (1)
[2 TB SSD](#) (1)

Step 1 — Battery



 **Make sure the laptop is off and unplugged before starting this step.**

- Locate the battery on the underside of the laptop.
- Push the two battery clips following the direction of the arrows.

Step 2



- Push upward from the base of the battery.

Step 3



- Pull battery away from computer until it is fully removed.

Step 4 — Fan



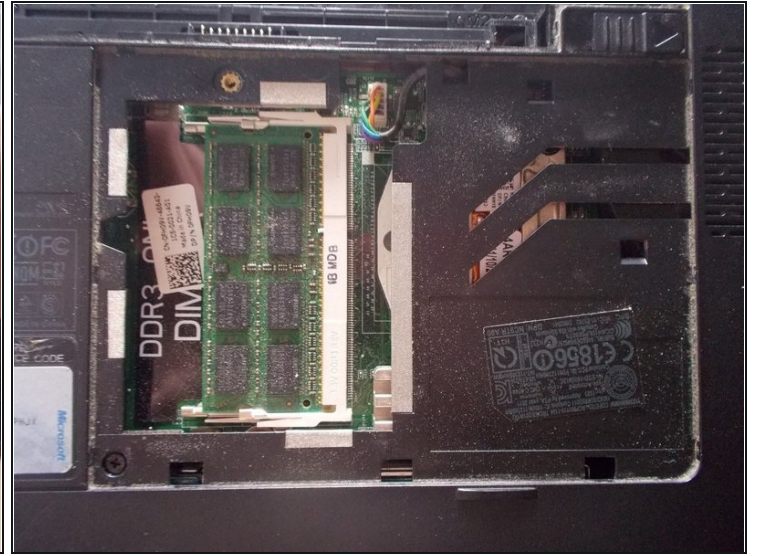
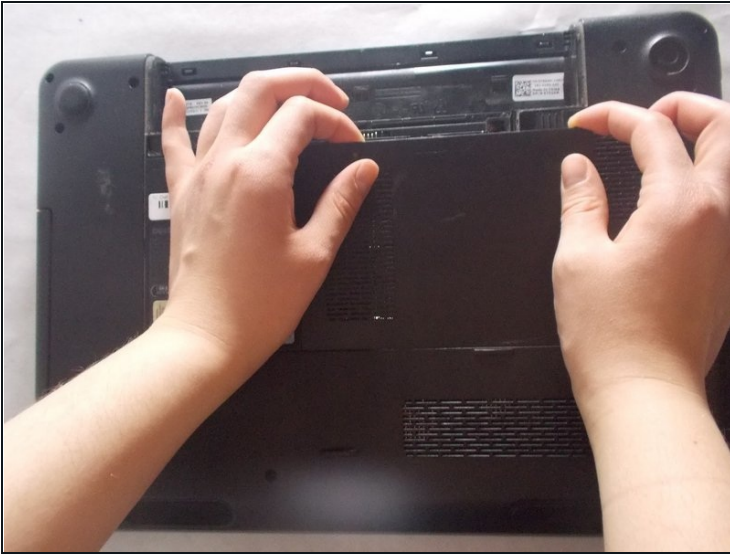
- Remove the 10 2.5x5 mm screws from the base of the laptop.

Step 5



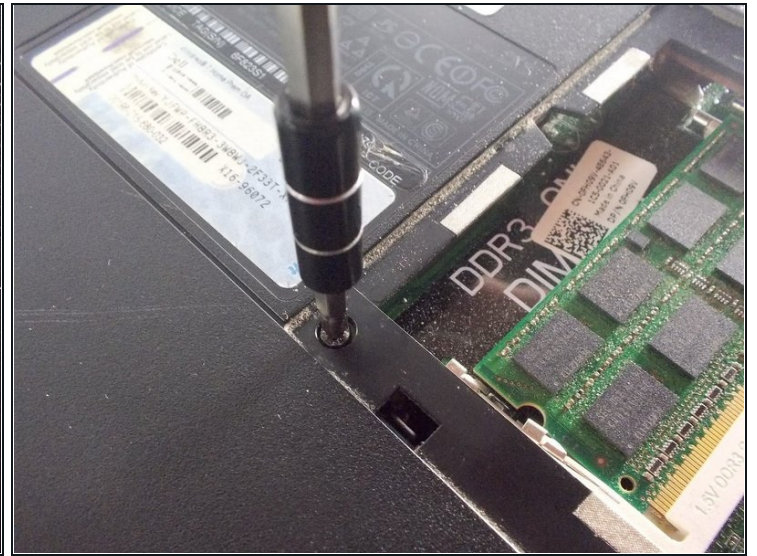
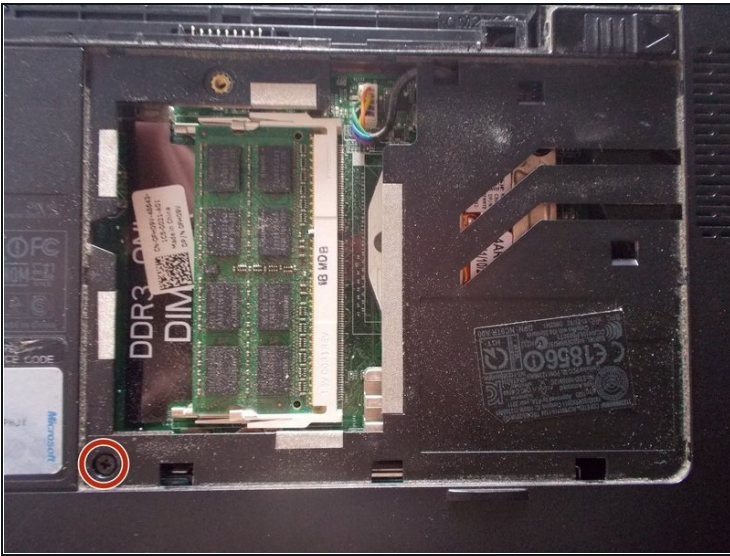
- Unscrew the final 2.5x5 mm screw attached to the cover.
 - ① This screw is "captive" and does not detach from the cover. Make sure the screw is fully unscrewed before attempting to remove the cover.

Step 6



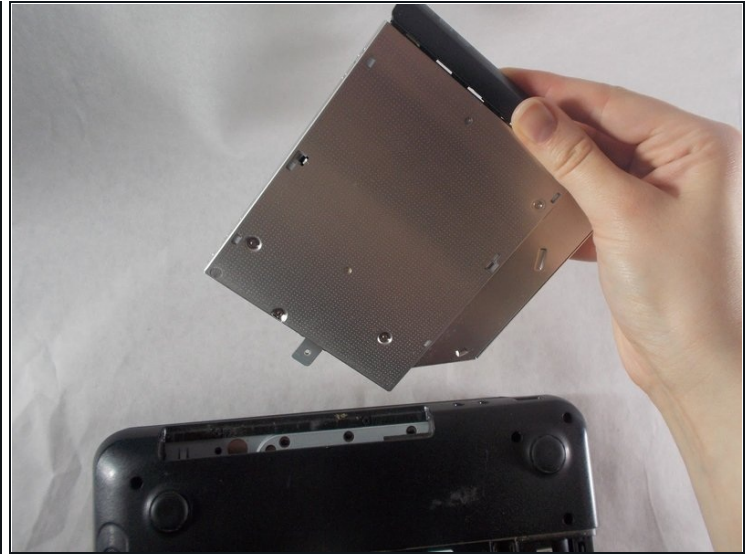
- Remove the cover from the laptop.

Step 7



- Unscrew the 2.5x5 mm screw inside the RAM compartment.

Step 8



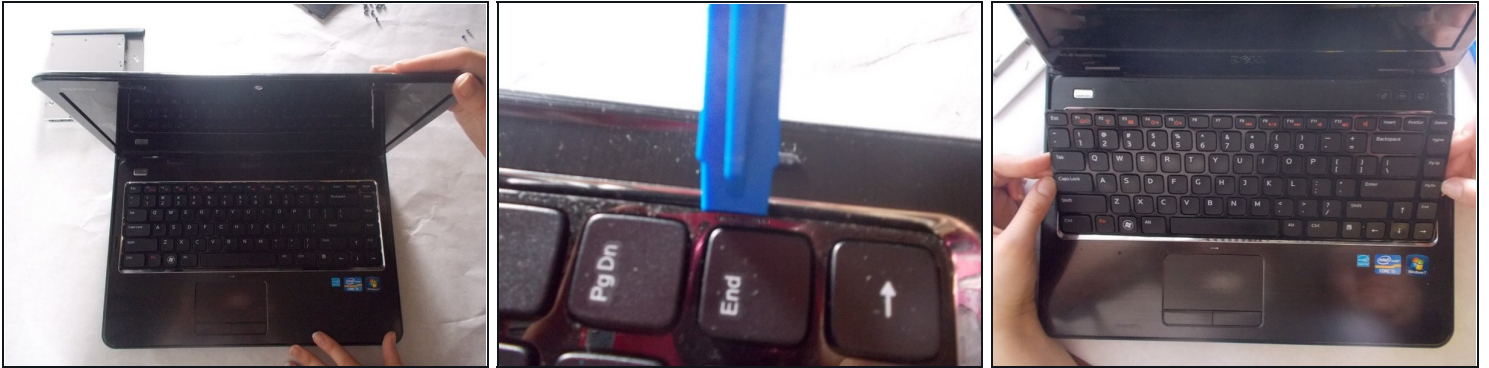
- Remove the disk drive from the side of the computer.
- ① There is no need to press the button, the drive will come out.

Step 9



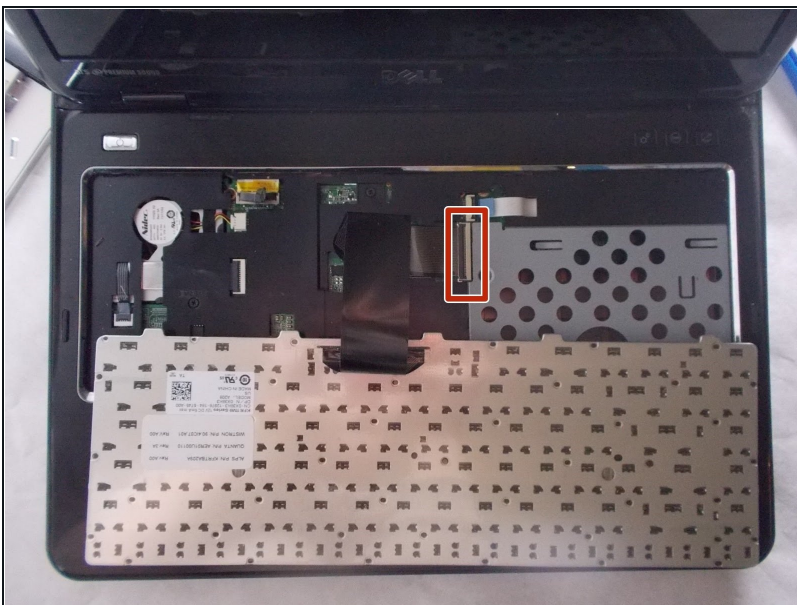
- Unscrew the two 2x3 mm screws inside the disk drive compartment.

Step 10



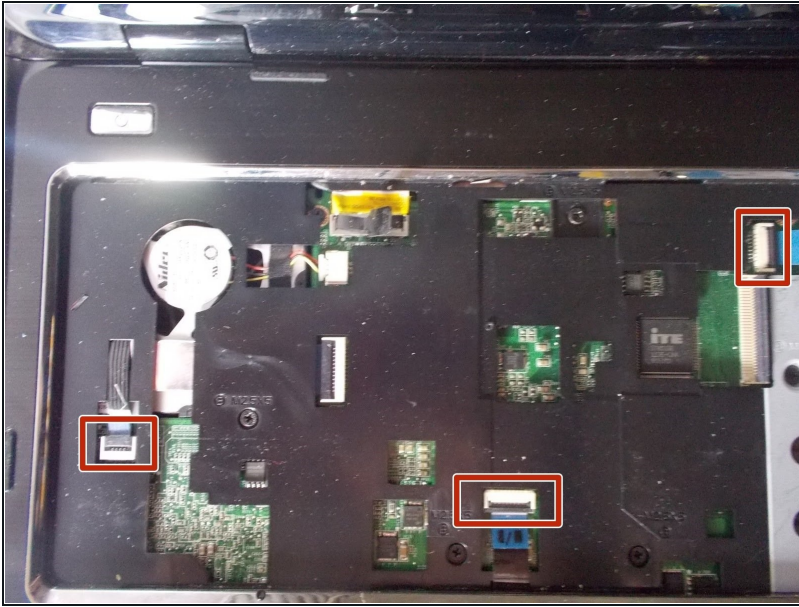
- Flip the computer over, and open the laptop.
 - Use a plastic opening tool to begin to remove the keyboard.
 - Use your hands to finish separating the keyboard from the laptop.
- ① This can be a bit challenging, but it will come loose.

Step 11



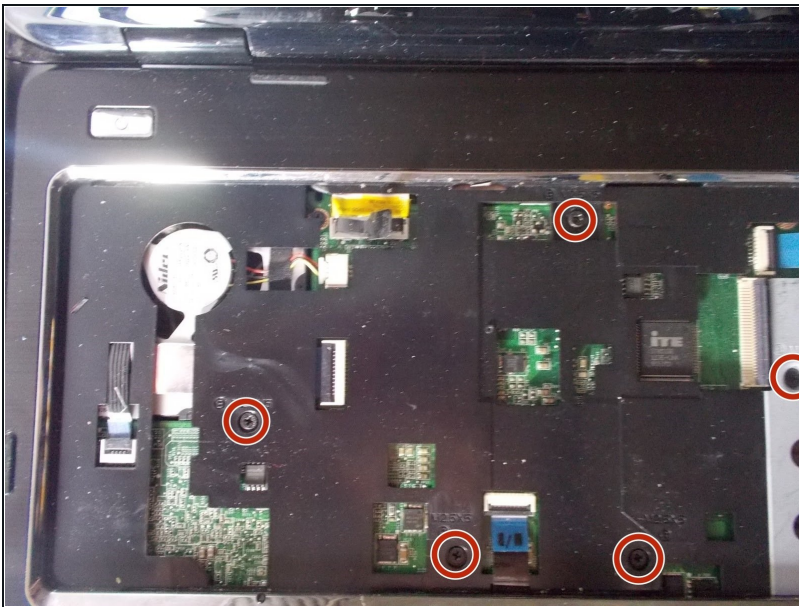
- Lift the black clip from the tan connection for the keyboard.
 - Pull the the connection away from the clip.
 - Move the keyboard away from the laptop.
- ① With the keyboard removed, consider this opportunity to more freely clean it out with some compressed air.

Step 12



- Lift the black clips from the tan connections for all 3 locations marked.
- Remove the connections from the clips.

Step 13



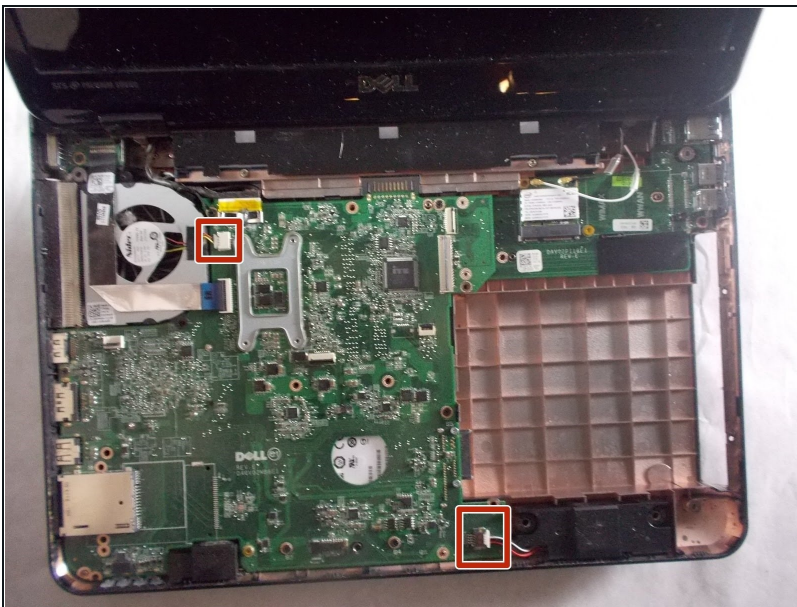
- Unscrew the five 2.5x5 mm screws.

Step 14



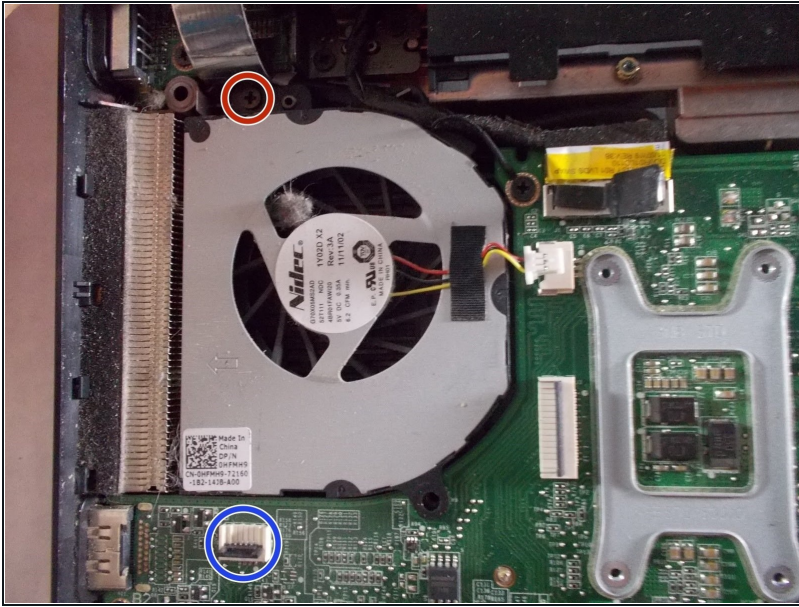
- Use plastic opening tools to remove base cover.
 - Use your hands to fully remove cover from the base.
- ⓘ This may be difficult, but it is possible.

Step 15



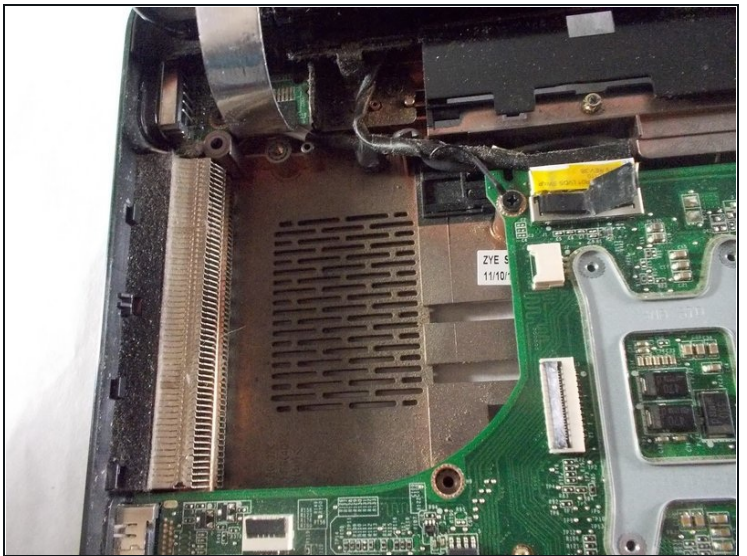
- Disconnect the two cables that connect the speaker and the fan.
- ⓘ These can just be pulled out, they do not have clips.

Step 16



- Disconnect the ribbon cable over the screw to reveal it. Flip up the latch and pull gently on the ribbon to remove it from the connector.
- Unscrew the 2.5x5 mm screw from the fan.

Step 17



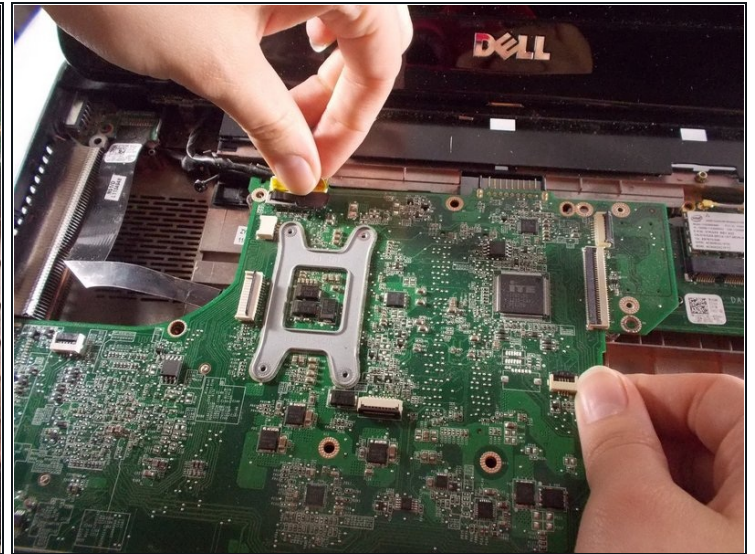
- Pull up and remove the fan from the laptop.

Step 18 — Motherboard



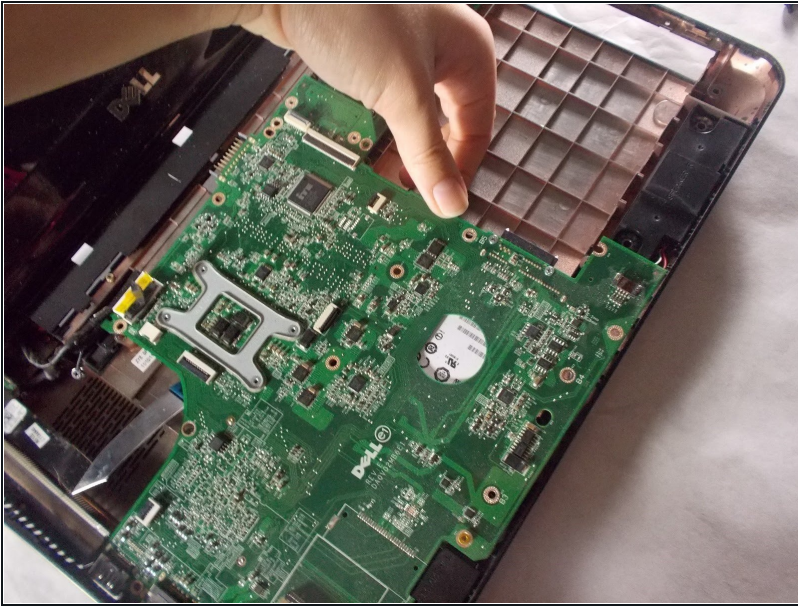
- Unscrew the six 2.5x5mm screws from the motherboard.
- Note that this screw may be "retained" by the loop at the end of the grounding wire.

Step 19



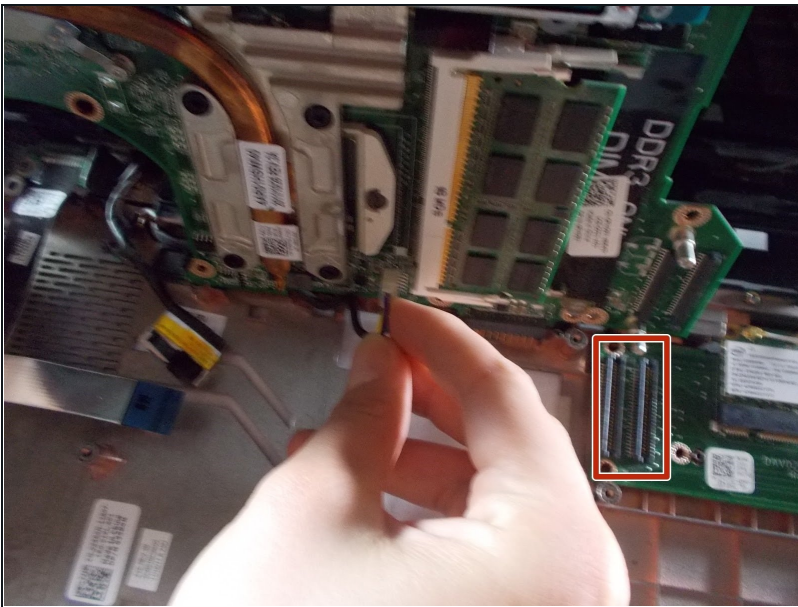
- Disconnect the black and yellow cable from the motherboard.

Step 20



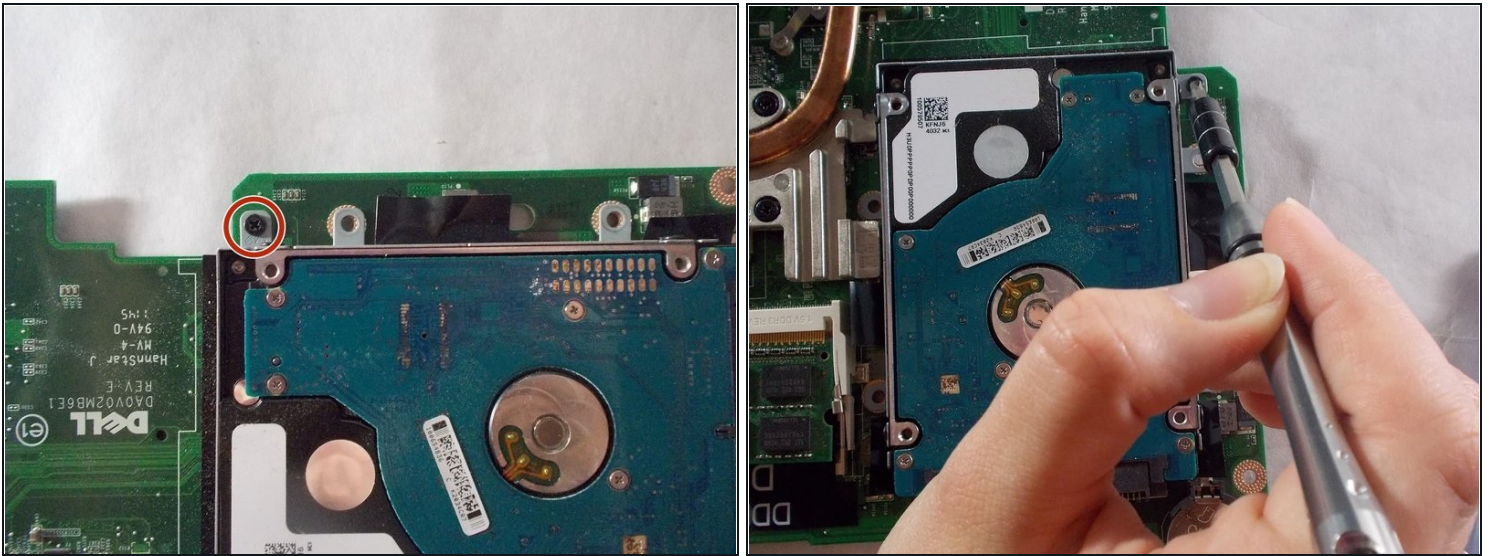
- Begin to separate the motherboard from the laptop
- ① Pull up to separate from the other internal pieces, and then pull to the right away from the case

Step 21



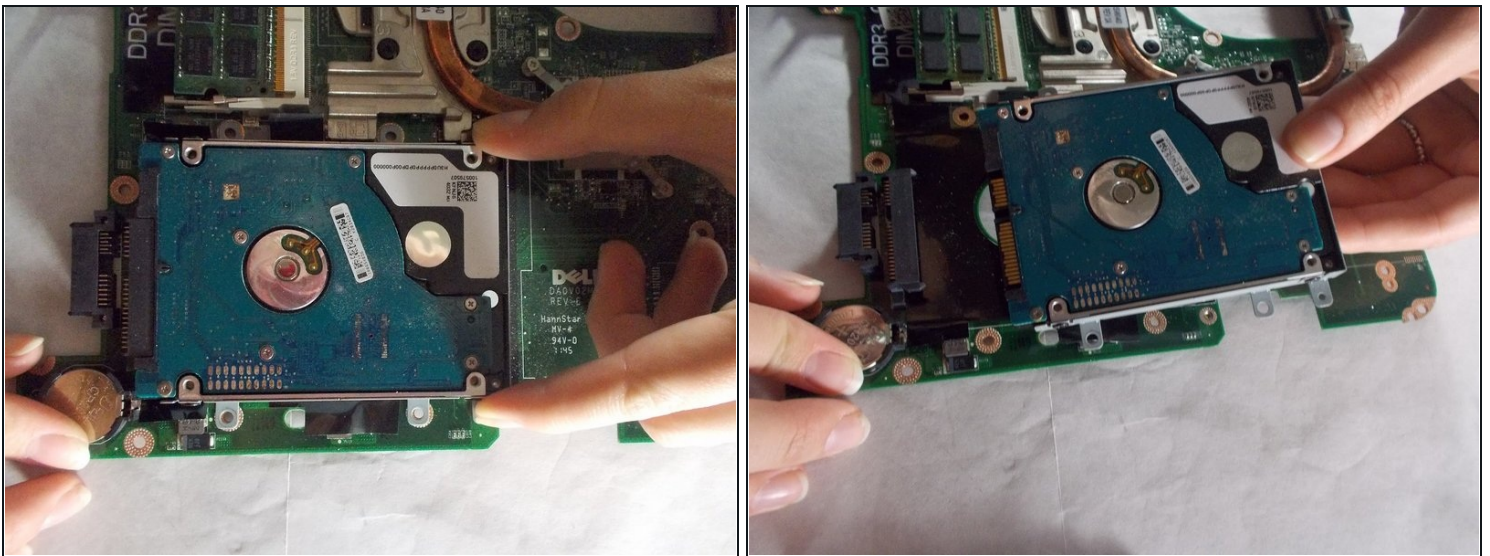
- Remove the final cable from the motherboard
 - ① This will allow the motherboard to fully come out of the computer
- ⚠ When reinstalling motherboard, ensure the two connectors are precisely aligned with the daughterboard below. If slightly misaligned, you may bend the pins on the daughterboard connector.

Step 22 — Hard Drive



- Unscrew the one 2x3 mm screw.

Step 23



- Use your hands to carefully pry out the hard drive.
- ⓘ Since this location is difficult to access, and the laptop is already disassembled, consider using this opportunity to install a fresh CMOS battery and blow the dust out of the heat exchanger radiator.

To reassemble your device, follow these instructions in reverse order.