



Dell Inspiron 17-3721 Optical Drive Replacement

This guide will be showing how to replace a broken or malfunctioning optical drive on the Dell Inspiron 17-3721.

Written By: Kevin Prairie



This document was generated on 2020-11-28 06:45:05 AM (MST).

INTRODUCTION

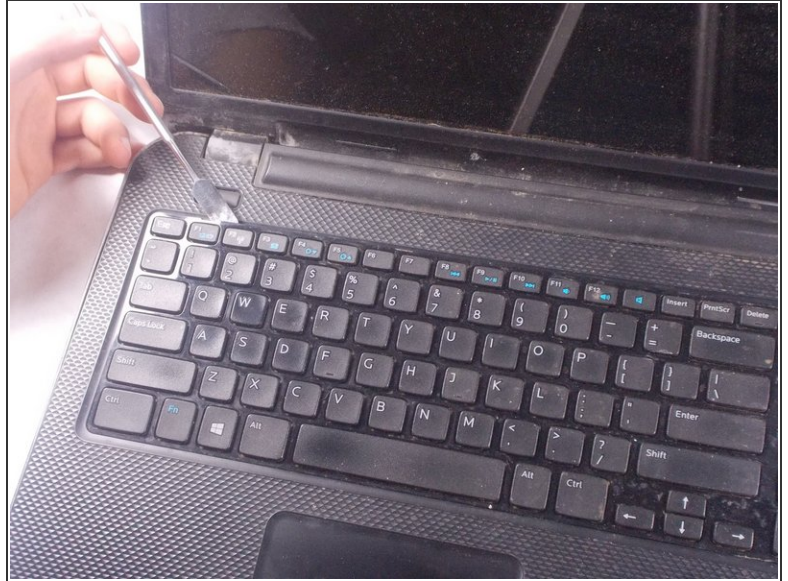
A broken optical drive will prohibit users from reading or loading anything from a disk onto their laptop. This guide will show the steps to replace the optical drive on this device.



TOOLS:

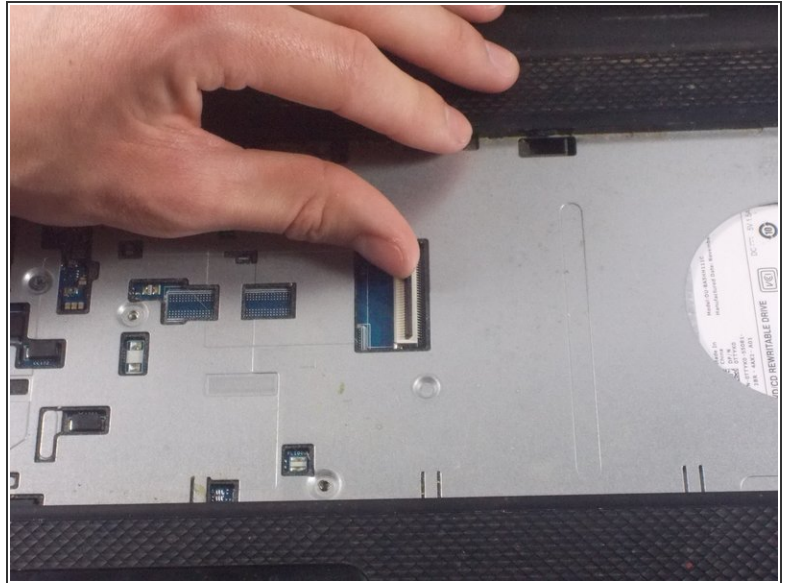
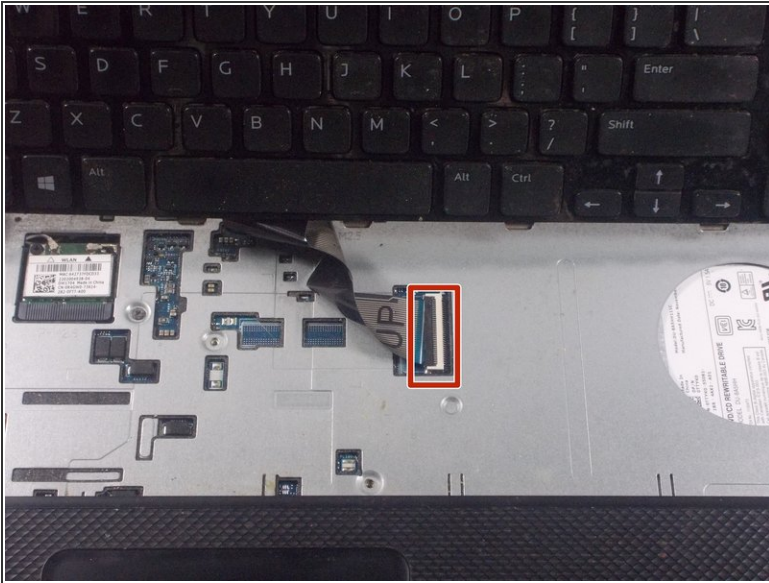
- [Metal Spudger](#) (1)
 - [iFixit Opening Tools](#) (1)
 - [Phillips #0 Screwdriver](#) (1)
 - [Phillips #1 Screwdriver](#) (1)
-

Step 1 — Keyboard



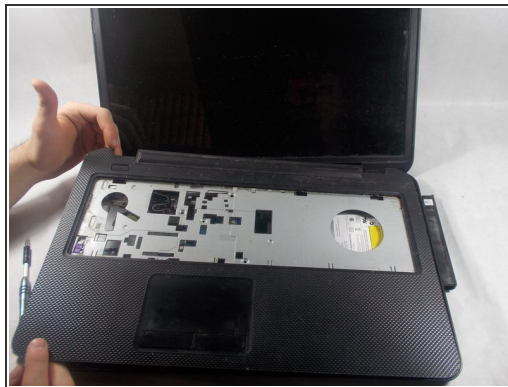
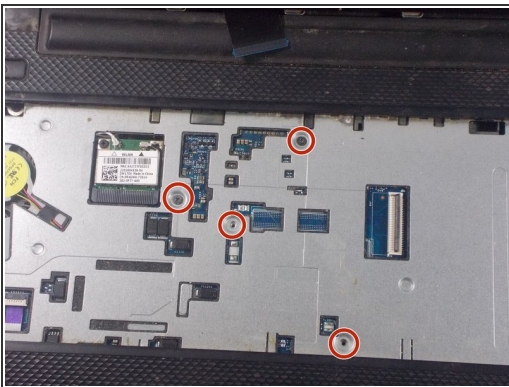
- Use a plastic opening tool or a metal spudger to pry out the tabs on top of the keyboard.
 - After prying the tabs up, carefully pull the keyboard out of the laptop.
- ⚠ Use caution when prying the tabs up or lifting the keyboard up, as the plastic material and the strip on the keyboard can easily break.

Step 2



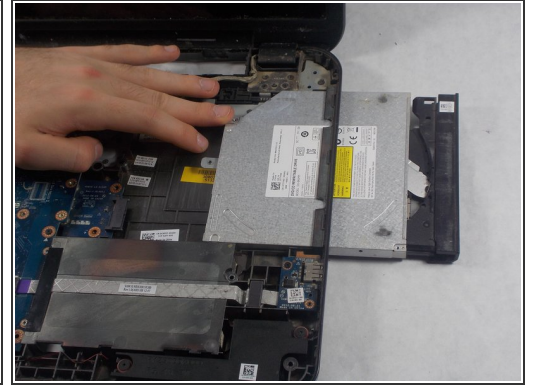
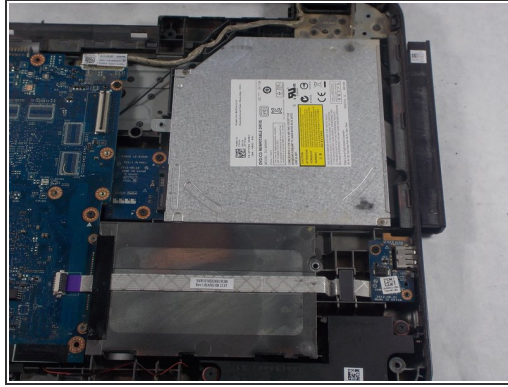
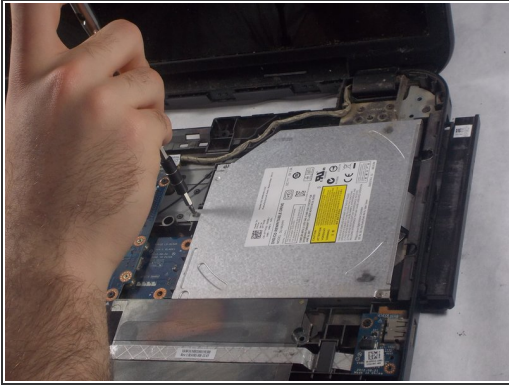
- Once the keyboard is lifted, locate the release tab.
- Using a plastic opening tool or your finger, lift the tab so that it opens .
- Once the tab is open, the strip on the keyboard can be removed.

Step 3 — Optical Drive



- Remove the four 6 mm PH1 Philips head screws under the keyboard.
- Carefully pop off the cover using the plastic opening tools and your hands.

Step 4



- Remove the 4 mm PH1 Philips head screw holding down the optical drive.
- Use your hand to slide the drive out of the device.

To reassemble your device, follow these instructions in reverse order.