



# Hp 15-f305dx Hard Drive Replacement

This guide will instruct you on how to replace your Hp 15-f305dx hard drive.

Written By: Brandon





## TOOLS:

- [Phillips #1 Screwdriver](#) (1)
- [Spudger](#) (1)
- [Phillips #0 Screwdriver](#) (1)



## PARTS:

- [500 GB SSD](#) (1)
- [1 TB SSD](#) (1)

## Step 1 — Battery



**⚠** Turn off the computer. If you are unsure whether the computer is off or in Hibernation, turn the computer on, and then shut it down through the operating system.

## Step 2



- Turn the computer upside down on a flat surface.



## Step 3



- Firmly slide the release latch to unlock the battery and slide the battery release latch to release the battery.

## Step 4



- Lift the battery from the middle and then pivot it outward to remove it from the computer.

## Step 5 — Keyboard



- Flip the laptop around.

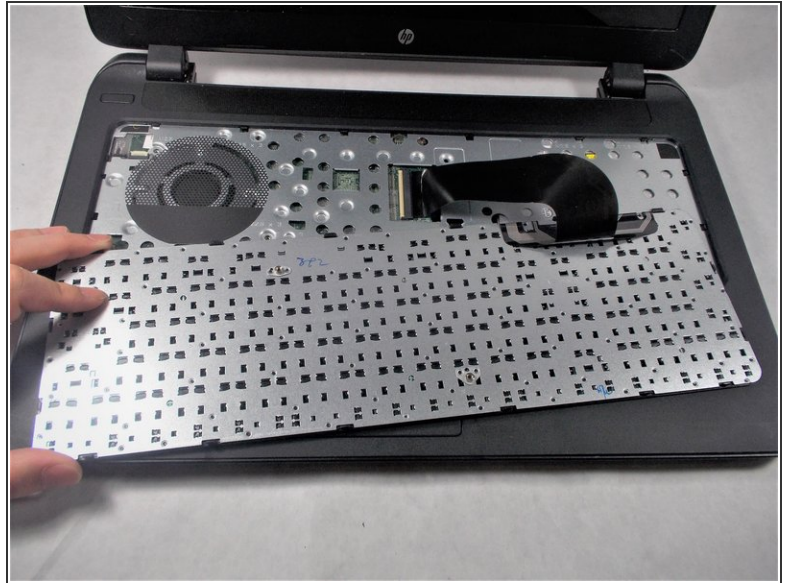
## Step 6



- Remove the single 7 mm screw from the top middle of the laptop using a Phillips #0 screwdriver.

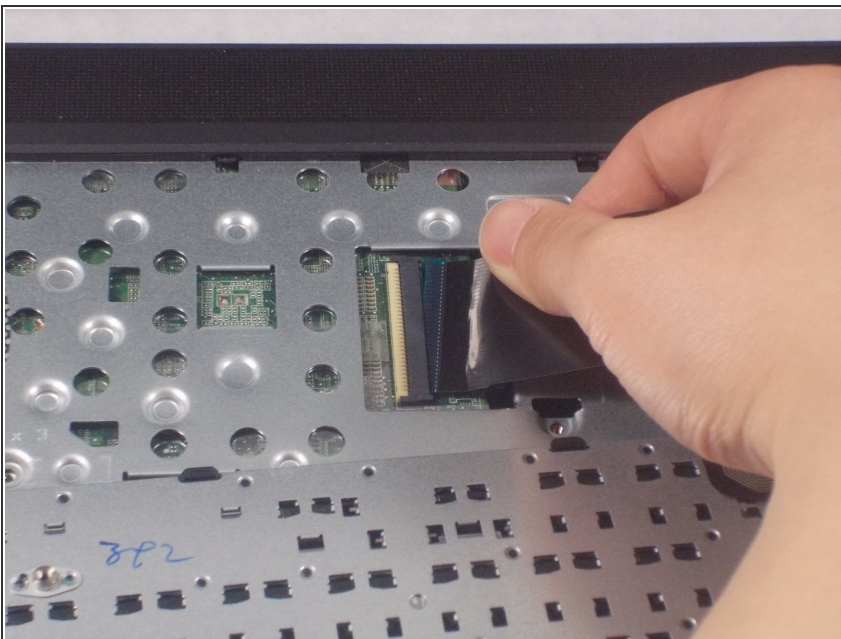


## Step 7



- Pry the keyboard out of the laptop gently and flip the keyboard around.

## Step 8



- Disconnect the connected cable from the mainboard.

## Step 9 — Hard Drive



- Remove the twelve screws from the bottom of the laptop with the Philips #0 Screwdriver.

## Step 10



- Eject the CD player on the side of the laptop by sliding it out.



## Step 11



- Use a Phillips # 1 Screwdriver to unscrew the three screws under the CD player

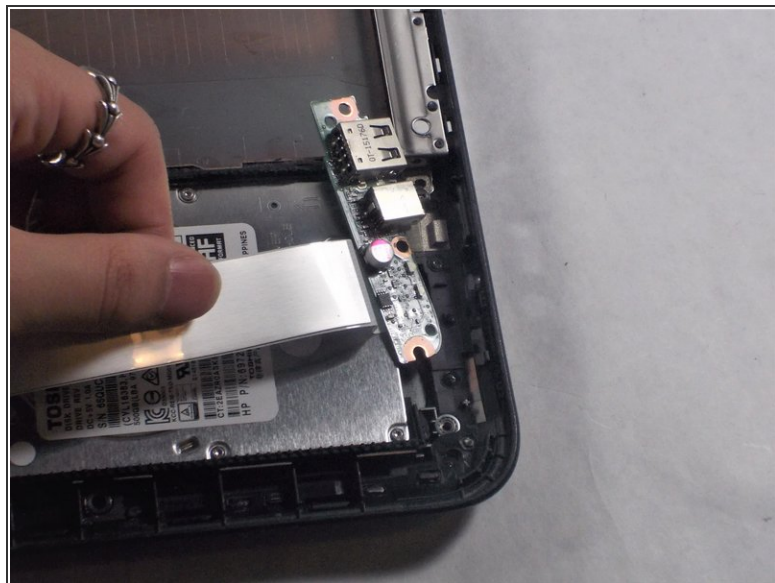
## Step 12



- Flip the device around and open it. Use the blue spudger tool to remove the casing around the keyboard space by driving it the crease and propping it up.
- Once you have used the spudger tool all the way around the casing, lift the casing up from the device.

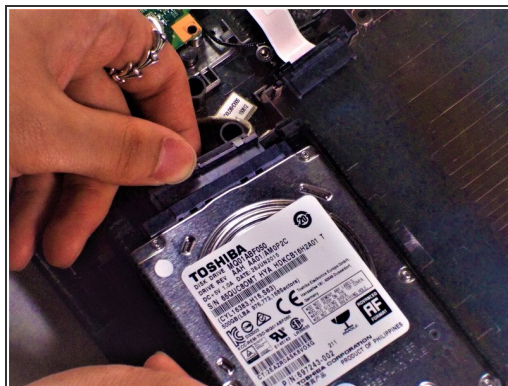


## Step 13



- Use a Phillips #0 screwdriver to remove the screw that holds the USB drive in the bottom right corner near the hard drive. Once removed, lift the USB drive off of the hard drive.

## Step 14



- Lift the hard drive from the device and unconnect the cord attached to it.

To reassemble your device, follow these instructions in reverse order.