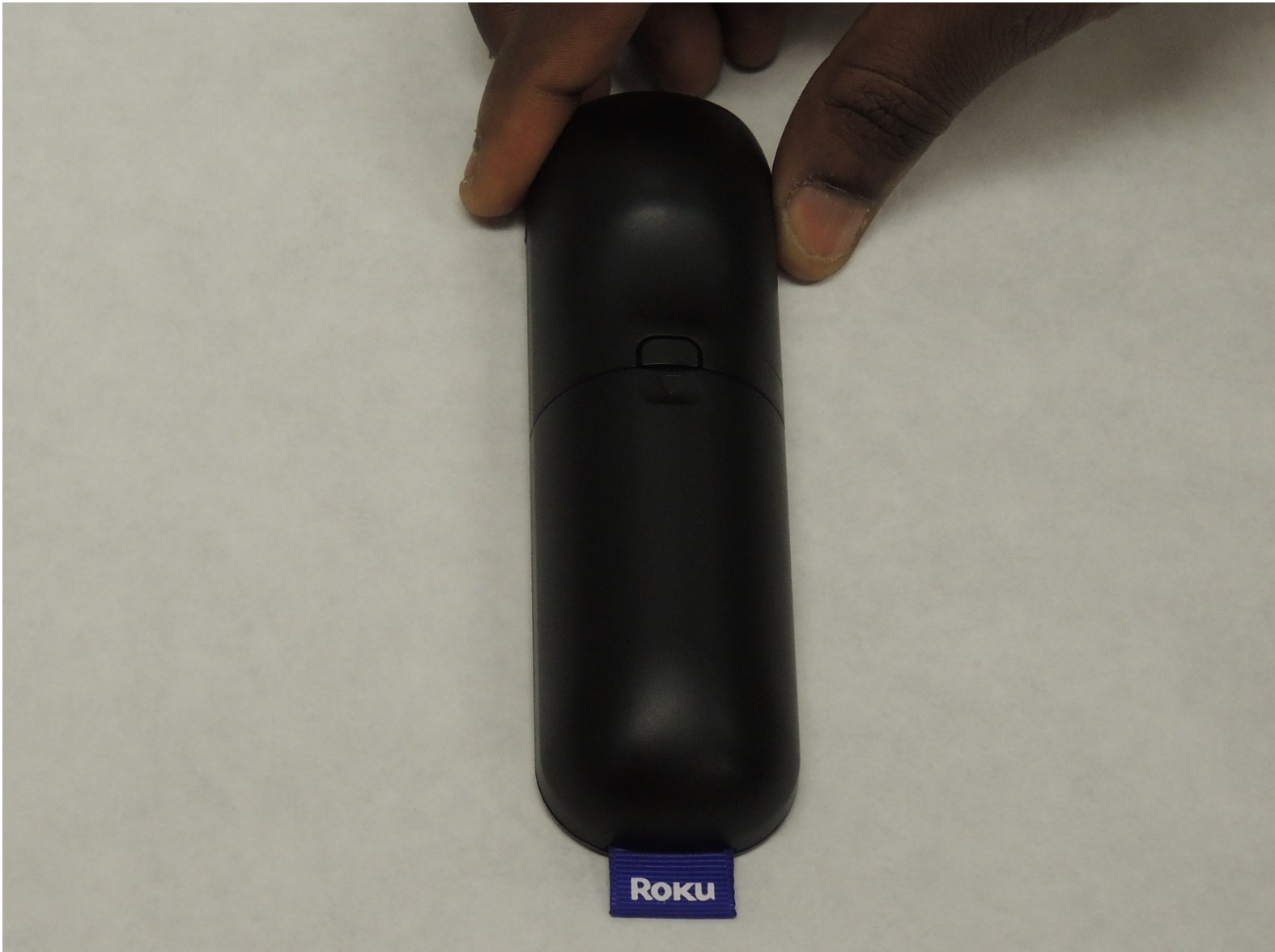




Roku Streaming Stick Macro Button Contacts Replacement

This guide provides instructions on how to replace the Roku Streaming Stick macro buttons.

Written By: Feliciano Bandazi



INTRODUCTION

The Roku Streaming Stick remote is a device that is used to control the operation of the Roku from a distance. This guide will provide instructions on how to replace the macro buttons.



TOOLS:

- [iFixit Opening Tools](#) (1)
- [Phillips #00 Screwdriver](#) (1)



PARTS:

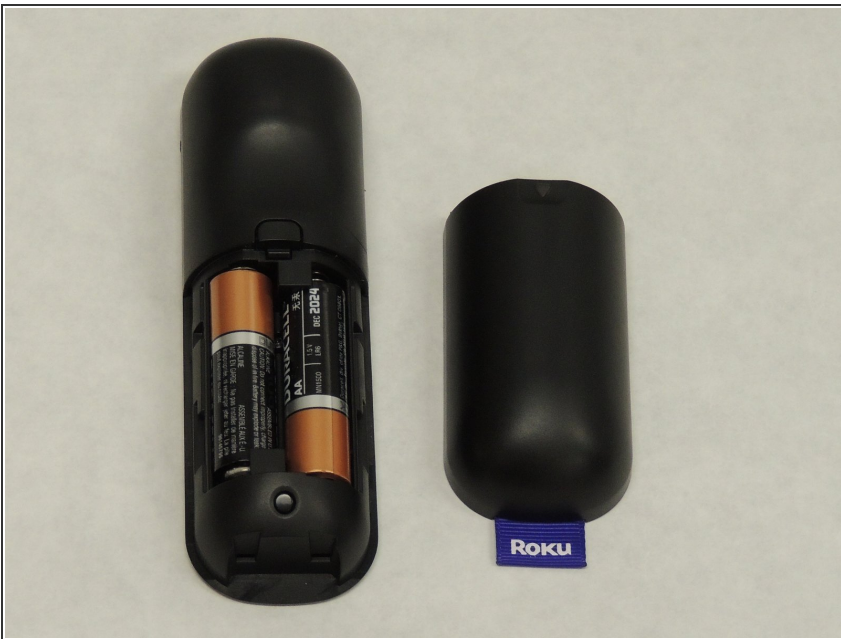
- [button contact repair kit](#) (1)

Step 1 — Macro Button Contacts



- Place the remote so that the battery cover is facing upwards.

Step 2



- Remove the battery cover to expose the battery compartment.

Step 3



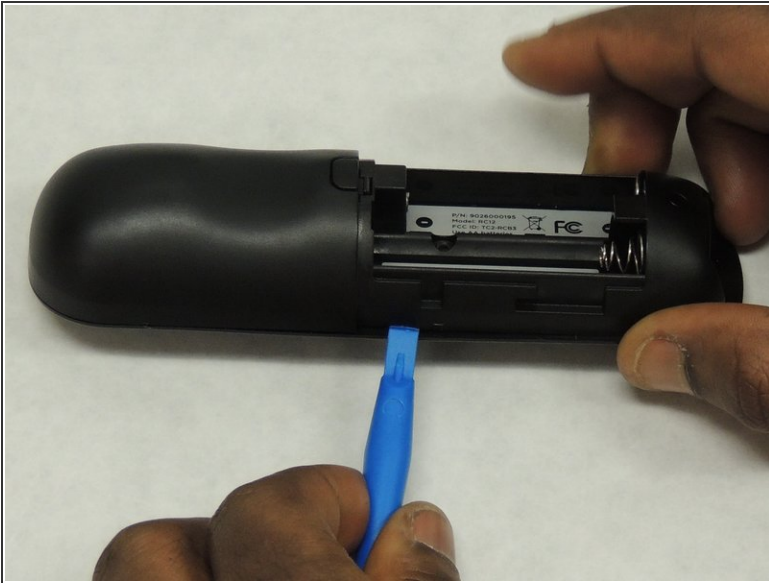
- Remove batteries.

Step 4



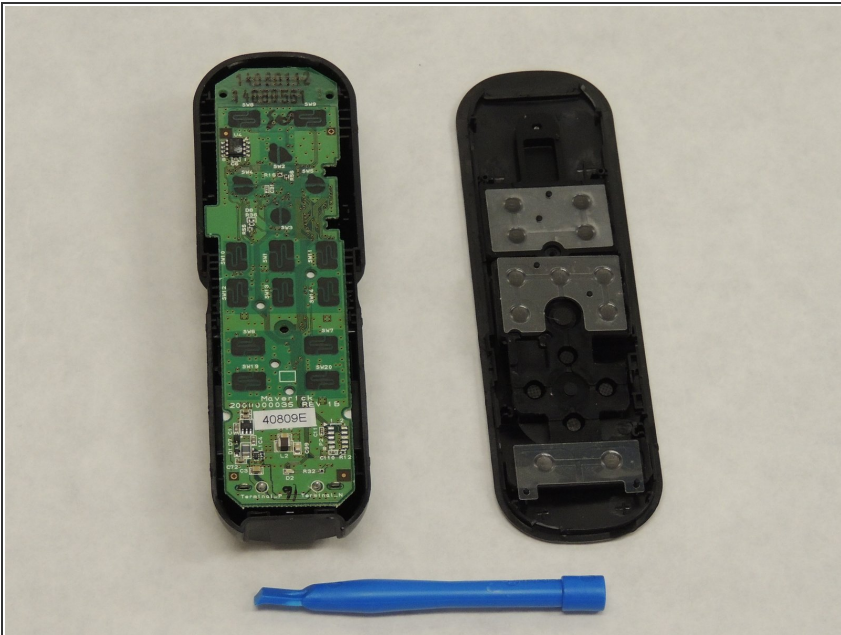
- Use a Phillips #00 screwdriver to remove the 1.5 mm wide screw.

Step 5



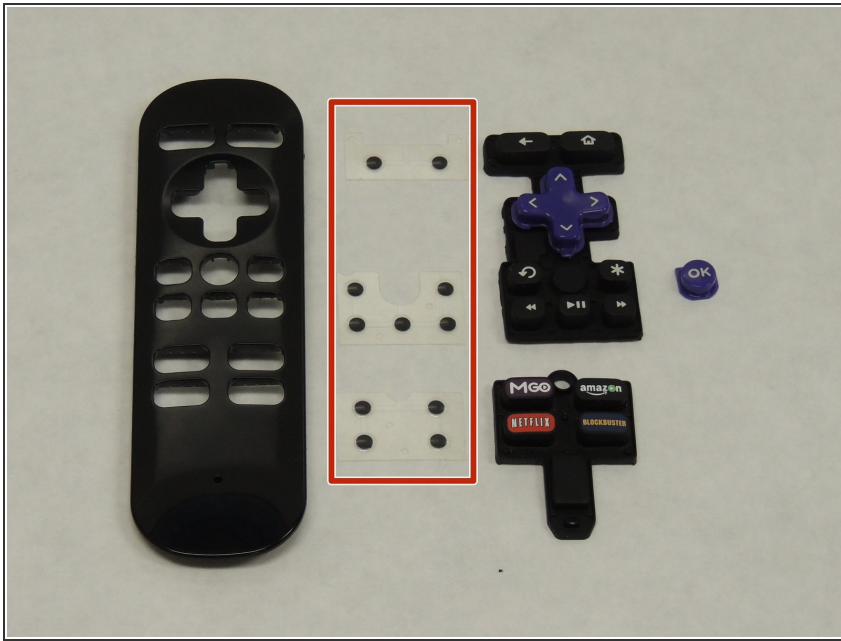
- Use a plastic opening tool to gently pry apart the plastic enclosure. Make sure you create a large enough gap before you attempt to separate the two pieces.

Step 6



- Gently remove the circuit board or motherboard.

Step 7



- First, gently remove the three plastic sheets. Then, remove the button panels from the remote control.
- Repair the contact sheet as noted on the Button Contact Repair Kit listed above. Otherwise replace with new conductive button contacts.

To reassemble your device, follow these instructions in reverse order.