



Dell Latitude E5470 LC-Display Panel Replacement

Dell e5470 Replacement of defective LCD panel with a new one.

Written By: Harvey



INTRODUCTION

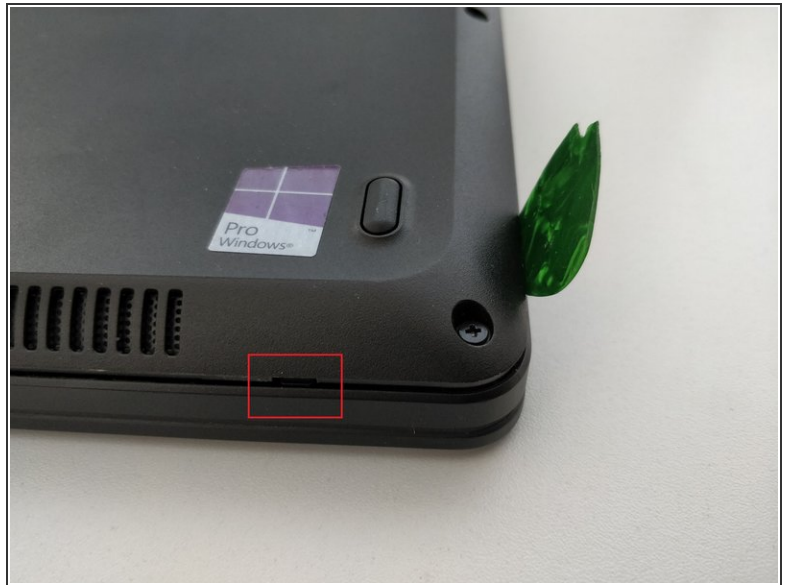
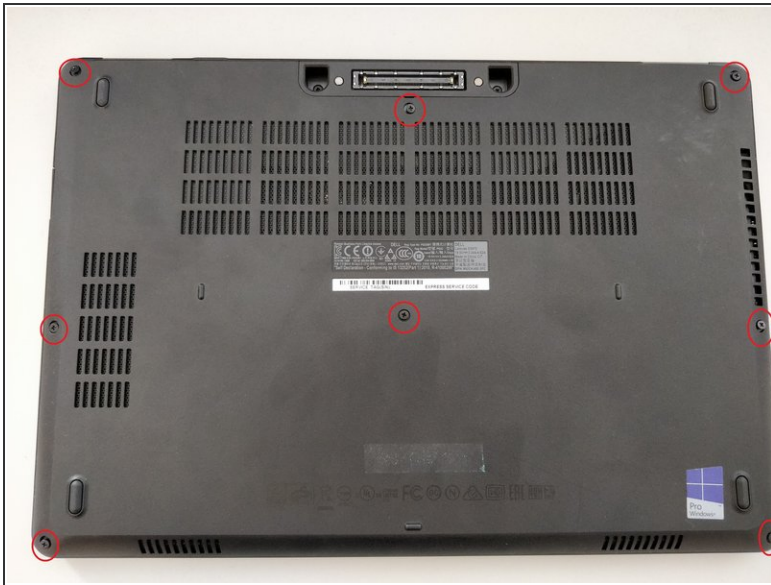
How to replace the LCD panel for Dell Latitude e5470 Laptop



TOOLS:

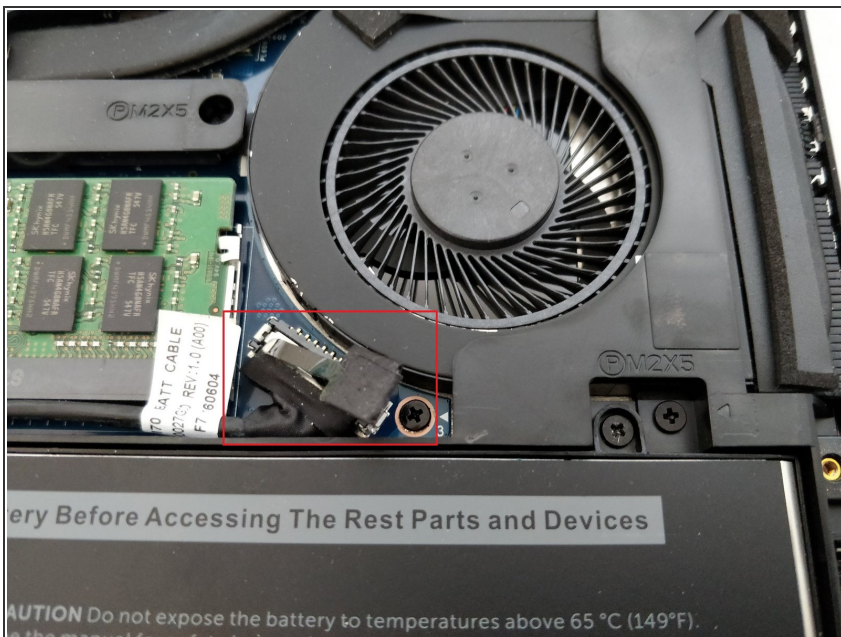
- [Phillips Screwdriver](#) (1)
 - [Spudger or Pick](#) (1)
 - [Tweezers](#) (1)
-

Step 1 — Bottom cover removal



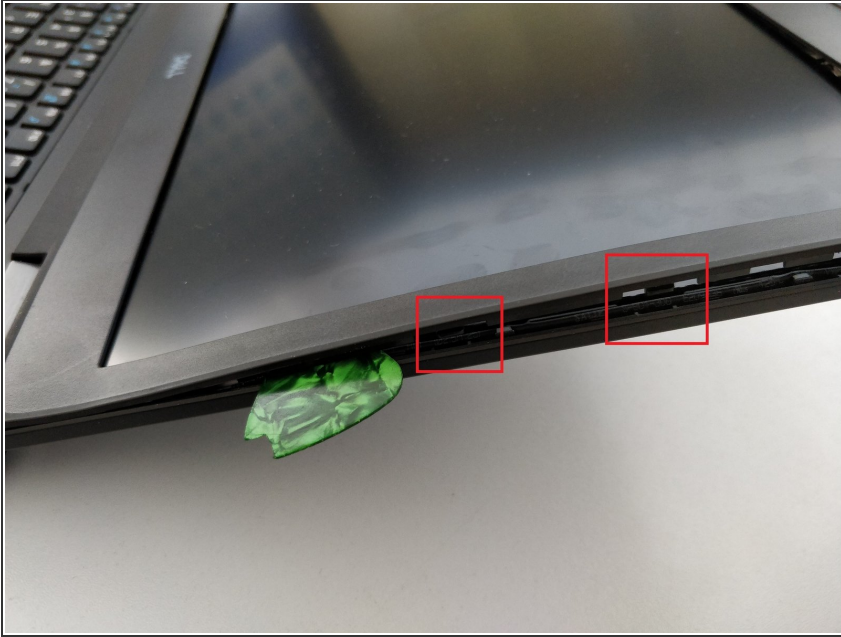
- Loosen the 8 screws on the bottom cover. The screws will remain in the casing, they do not come out all the way.
- Insert the pick or spudger between the upper and lower casing to release the plastic clips.
- Attention needed: The clips are easily broken.

Step 2 — Disconnect the battery



- To disconnect the battery, pull gently upwards on the tab connector.

Step 3 — Remove the LCD Bezel



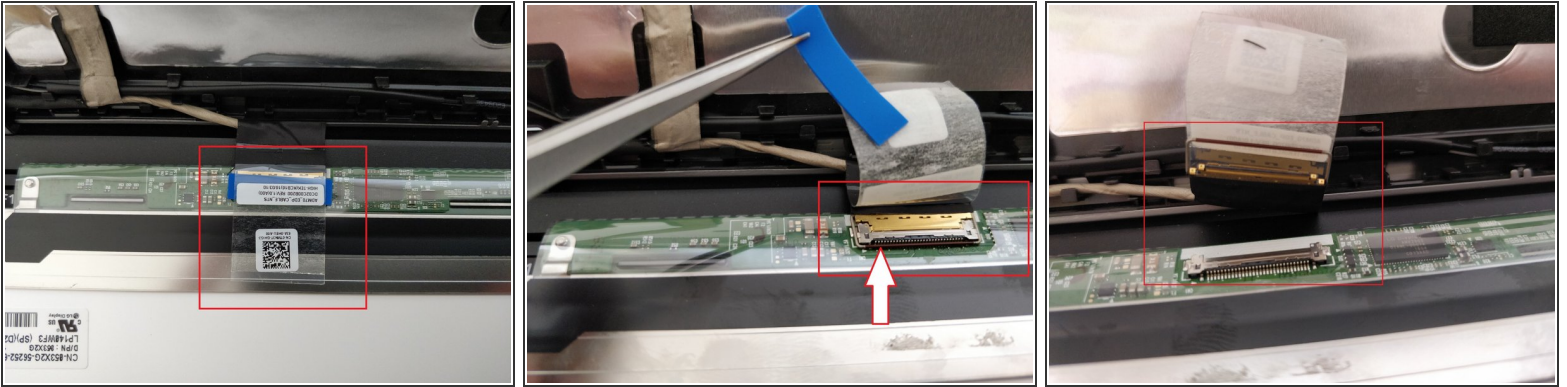
- Using a pick or spudger, gently insert between the LCD back-cover and bezel to release the clips.
- The bezel is also glued to the LCD panel.
- Remove slowly to avoid tearing or damaging any components underneath.

Step 4 — Removing the LCD panel



- Remove the 4 Philips screws securing the panel.

Step 5 — Remove the LCD Connector



- Remove the LCD panel and lay it flat on the keyboard.
- You will be able to see the connector on the back of the LCD panel secured with some adhesive tape and a metal connector.
- Using the tweezers, slowly lift the tape away to reveal the blue sticky protector. Removing the blue pad to see the metal connector underneath.
- Using a spudger, lift the front of the connector up (highlighted by the white arrow).
- Pull the cable back to release the cable from the connector.
- To reassemble, follow the steps in reverse.

To reassemble your device, follow these instructions in reverse order.