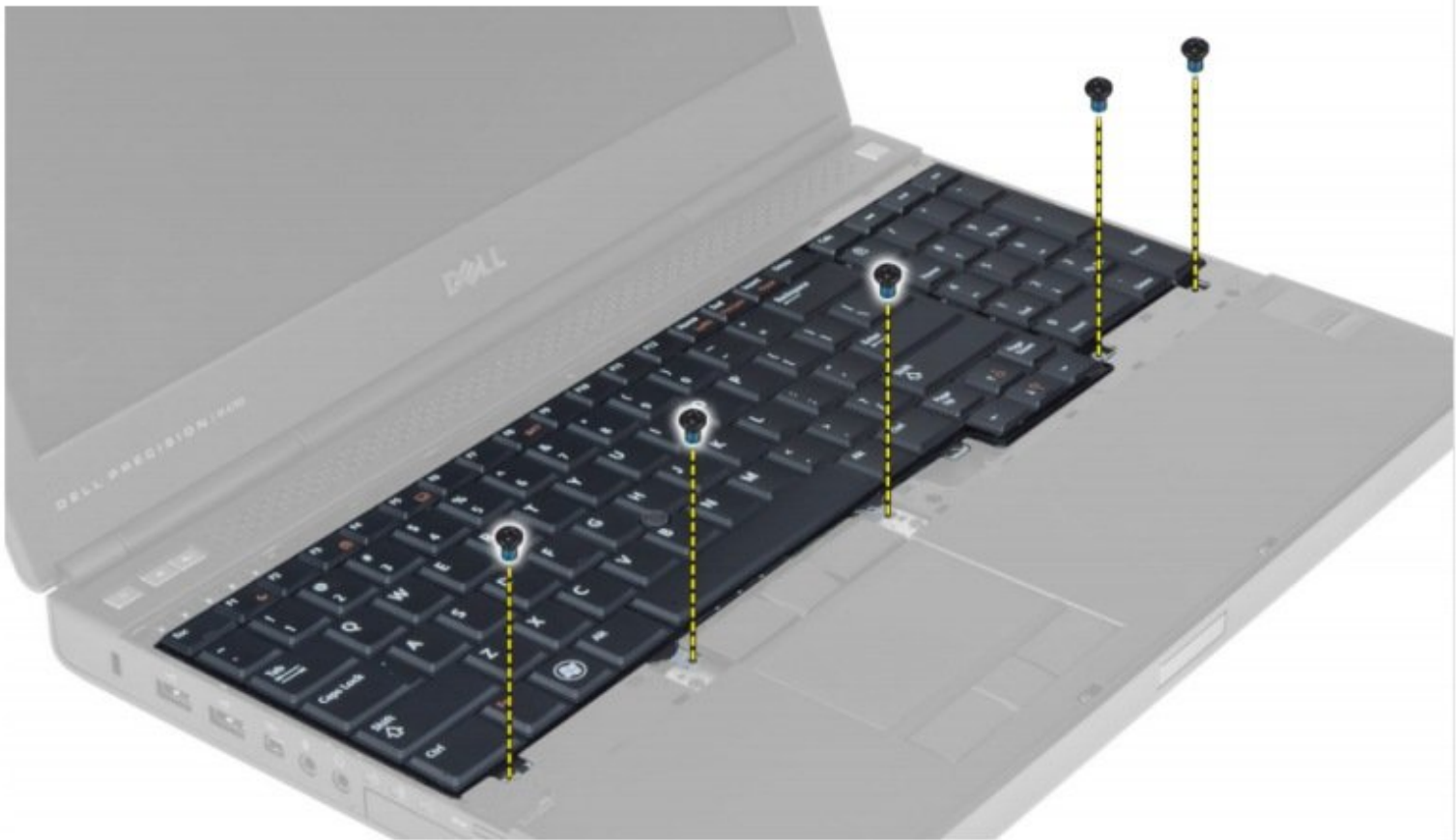




Dell Precision M4700 Keyboard Replacement

Written By: Johnathan Hammond





TOOLS:

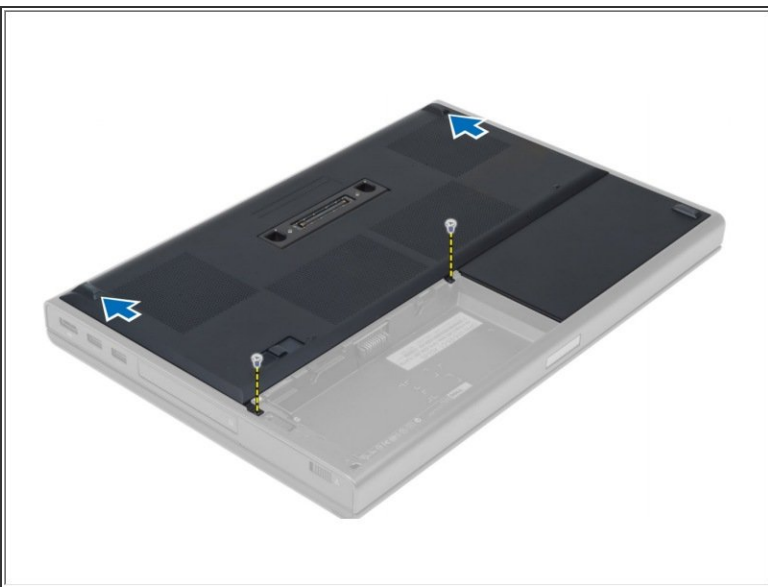
- [Phillips #0 Screwdriver](#) (1)
- [Spudger](#) (1)

Step 1 — Battery



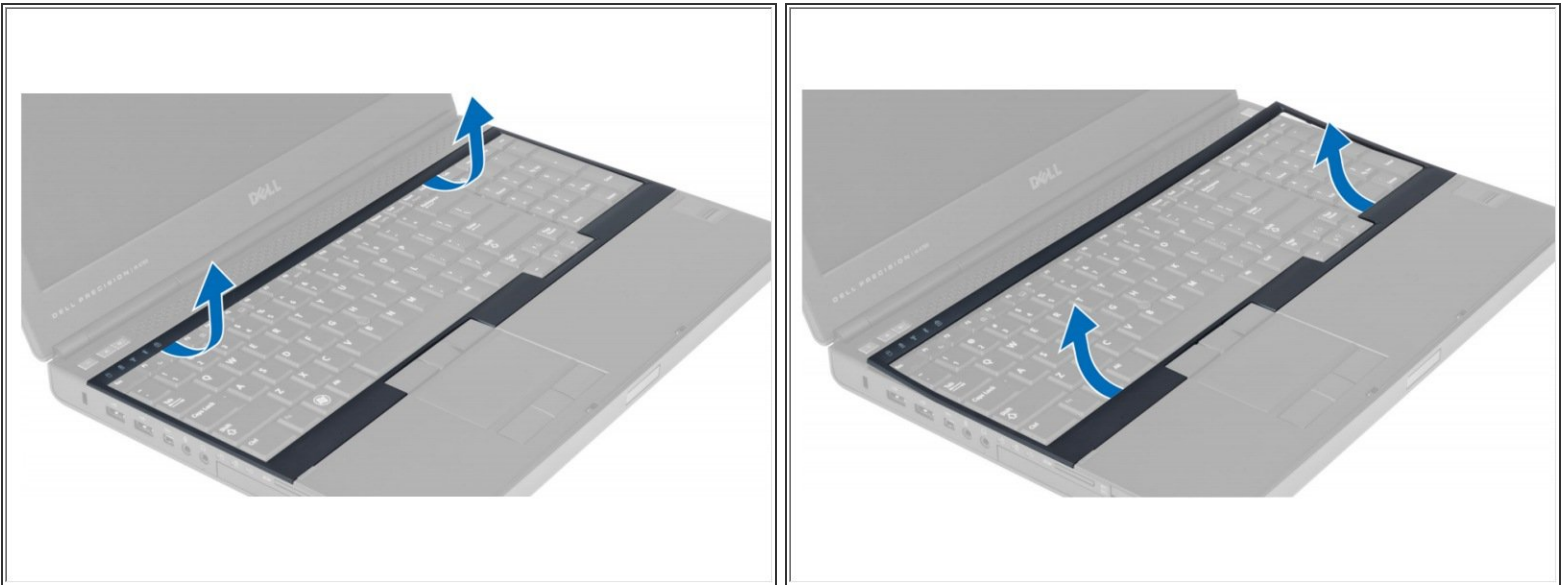
- Slide the release latch to unlock the battery.
- Flip and remove the battery from the computer.

Step 2 — Base Cover



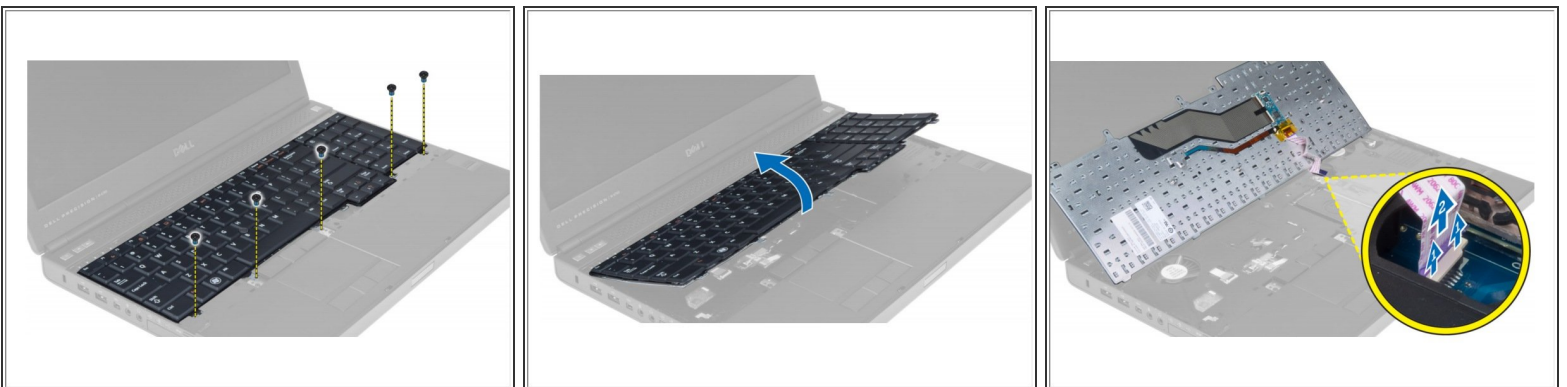
- Remove the screws that secure the base cover to the computer. Press the rubber tabs towards the rear of the computer to disengage the base cover.
- Flip and remove the base cover from the computer.

Step 3 — Keyboard Trim



- Pry up the keyboard trim starting from the top-inner edge.
- Pry up the bottom edge of the keyboard trim from the top-inner edge.

Step 4 — Keyboard



- Remove the screws that secure the keyboard to the computer.
- Starting from the bottom of the keyboard, separate the keyboard from the computer and flip the keyboard over.
- Disconnect the keyboard-data cable from the system board and remove the keyboard.

To reassemble your device, follow these instructions in reverse order.

