



# Samsung Series 9 NP900X3A Memory Card Replacement

This guide's purpose is to walk you through the steps of replacing the memory card in you Samsung Series 9 laptop.

Written By: Austin Gross



---

## INTRODUCTION

If you are encountering issues such as unreadable memory card followed by a notification like “this card cannot be used” or card running slower than anticipated, these issues may constitute replacing the card.



### TOOLS:

- [Phillips #0 Screwdriver](#) (1)
  - [iFixit Opening Tools](#) (1)
-

## Step 1 — Back Panel



- Locate the rubber feet at every corner of the laptop back panel. Use the iFixit prying tool, and break the adhesive between the rubber feet, and the case.
- ⓘ Screws securing the back panel underneath the adhesive will be exposed.
- ★ Removing the rubber feet will weaken the adhesive making reassembly difficult. Apply new adhesive if you choose to place the rubber feet back on to the device.

## Step 2




- Use a Phillips #0 screwdriver to remove the ten 0.2mm screws from the bottom cover.
- ⓘ Keep track of the screws and their placement on the laptop. This will help make reassembly easier and more organized.



## Step 3



- Find an opening on the back of the laptop. Use the plastic prying tool to help pry open the back panel of the laptop.

 Use both hands when removing the back case cover. Too much force will bend the cover making it difficult to reassemble.

## Step 4 — USB & Headphone I/O Board



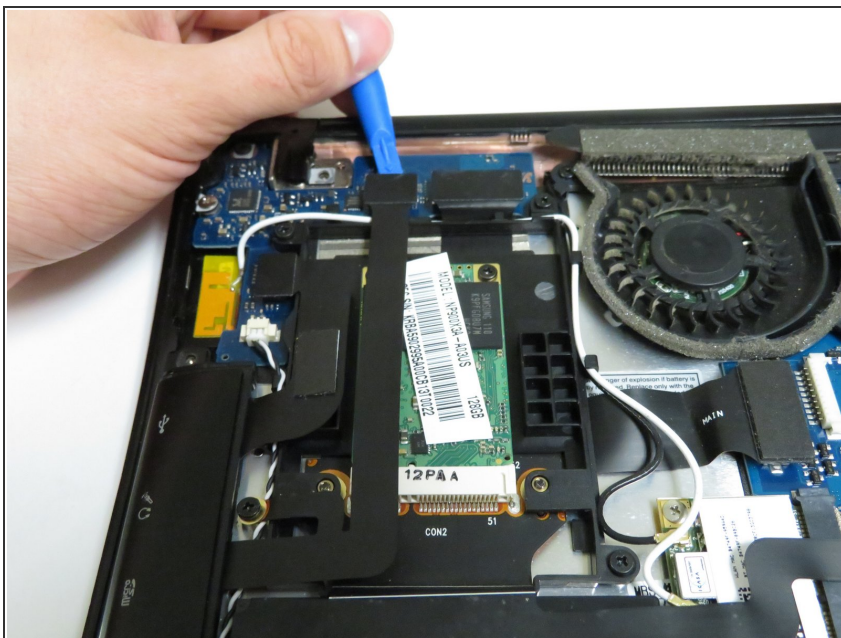
- Locate the AUX and USB port on the left side of the laptop.

## Step 5



- Remove the one 0.1mm screw using a Phillips #0 Screwdriver from the laptop.
- ☑ Keep track of the 0.1mm screws for reassembly later.

## Step 6



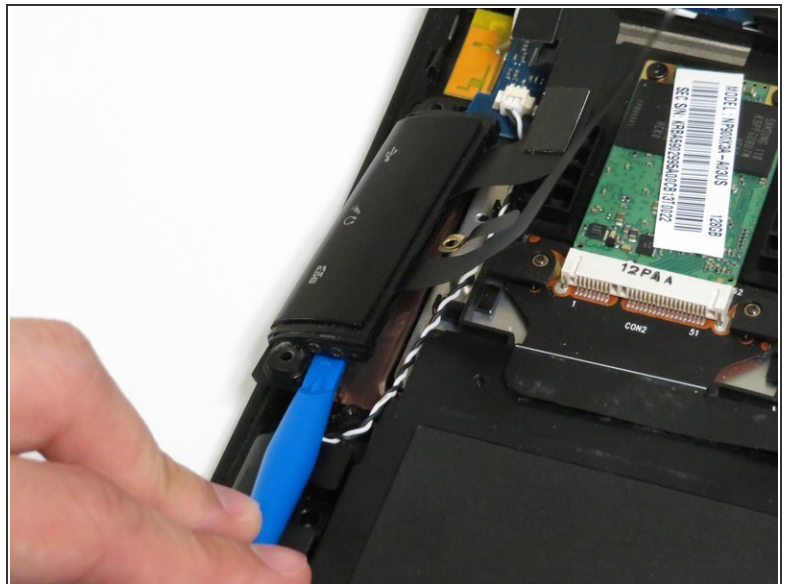
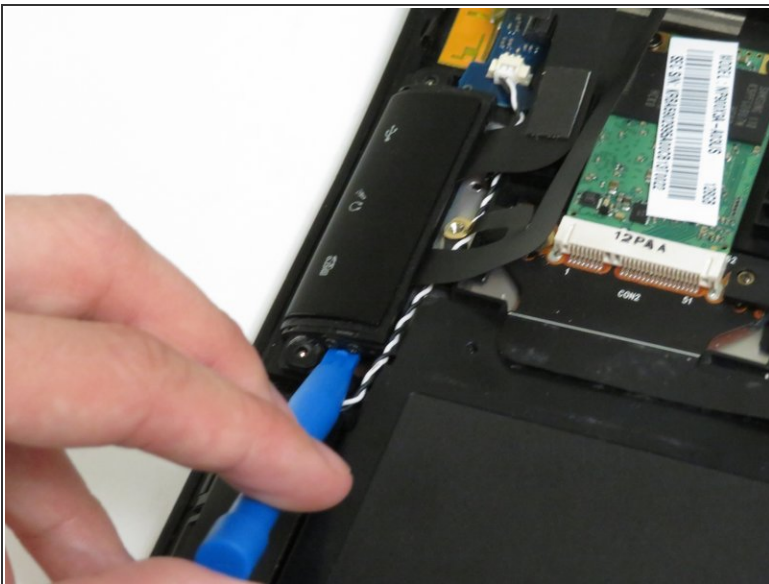
- Use a plastic prying tool to remove the top connector of the port from the motherboard.
- ⓘ This should come out very easily and allow access to the Memory card.

## Step 7



- Remove the second connector from the motherboard using the prying tool.
- ⓘ This should come out very easily, and allow access to the Memory card.

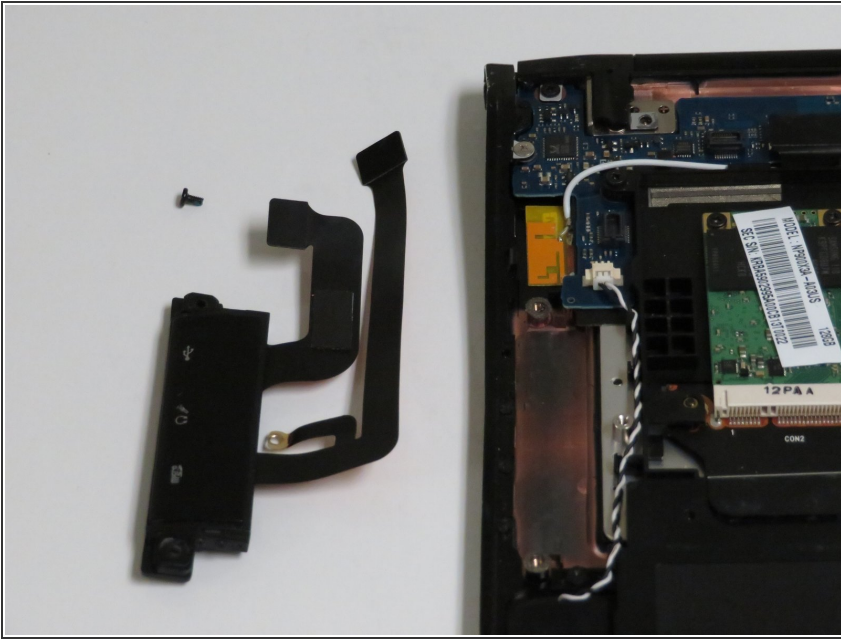
## Step 8



- Find an opening on the side of the port and pry the USB and AUX port out of the laptop with the prying tool.

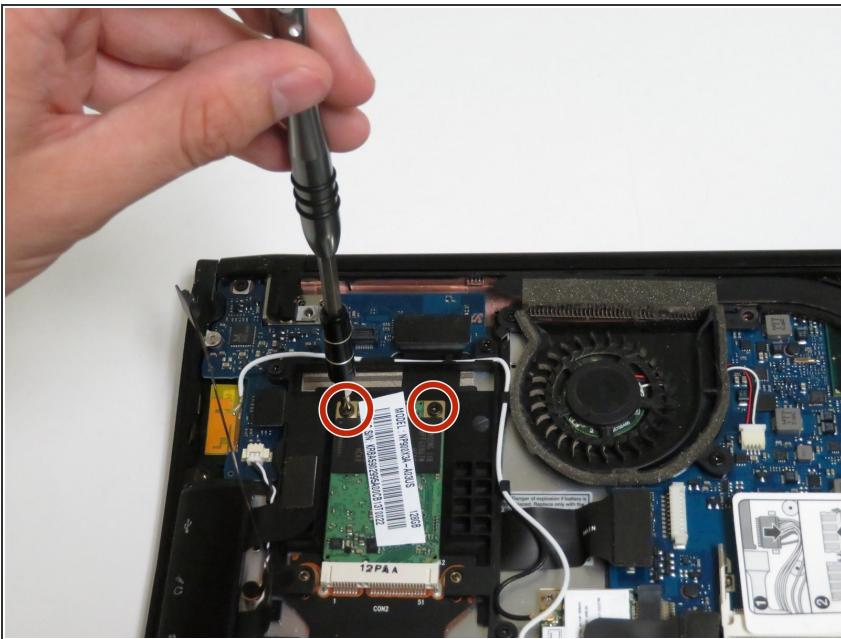


## Step 9



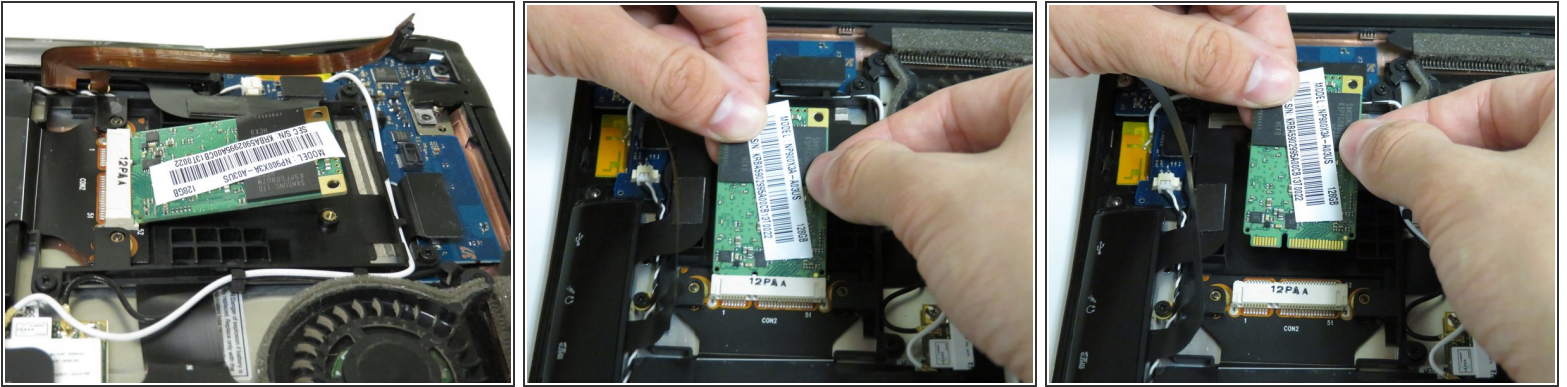
- Remove and place the port outside of the laptop. You are free to install your new USB and HDMI ports.

## Step 10 — Memory Card



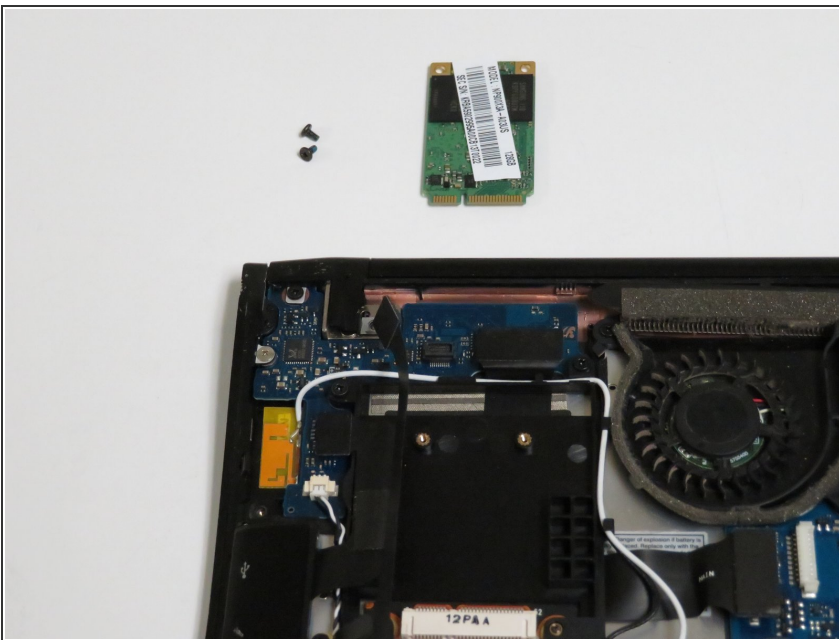
- Using your Phillips #0 Screwdriver, unscrew the 0.1mm screws securing the memory card in place at the top.
- ☑ Remember to keep track of the screws for reassembly.

## Step 11



- ⓘ After removing the screws, your card should angle upward making for an easier removal.
  - Using both hands, gently lift the card out of its socket in the direction away from yourself.
- ⚠ Use caution when removing the card, bending the pins will damage the socket and your ability to reuse the memory card if you plan to.

## Step 12



- Replace the the card with a new compatible memory card.
- ⓘ To install your new memory card, follow these steps in reverse order.

To reassemble your device, follow these instructions in reverse order.