



# Toshiba Satellite L505D-GS6000 Key Replacement

Replacement guide of keyboard key on Toshiba L505D-GS6000.

Written By: Adam Dellicker



---

## INTRODUCTION

This guide should be used if a key is loose on the keyboard or a key isn't working as intended.

The process should not require any tools, but a plastic opening tool may make it a little easier.

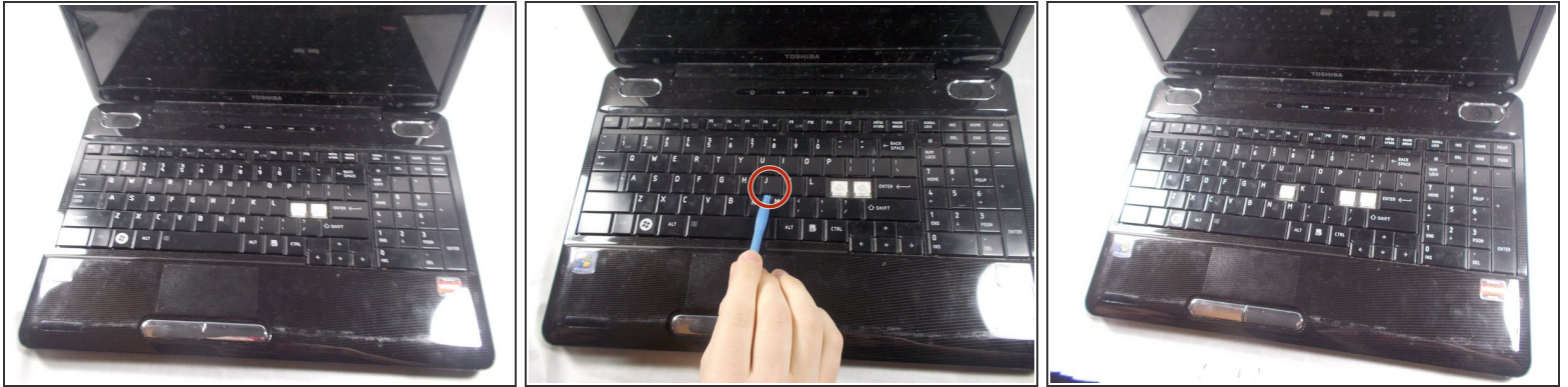
---



### TOOLS:

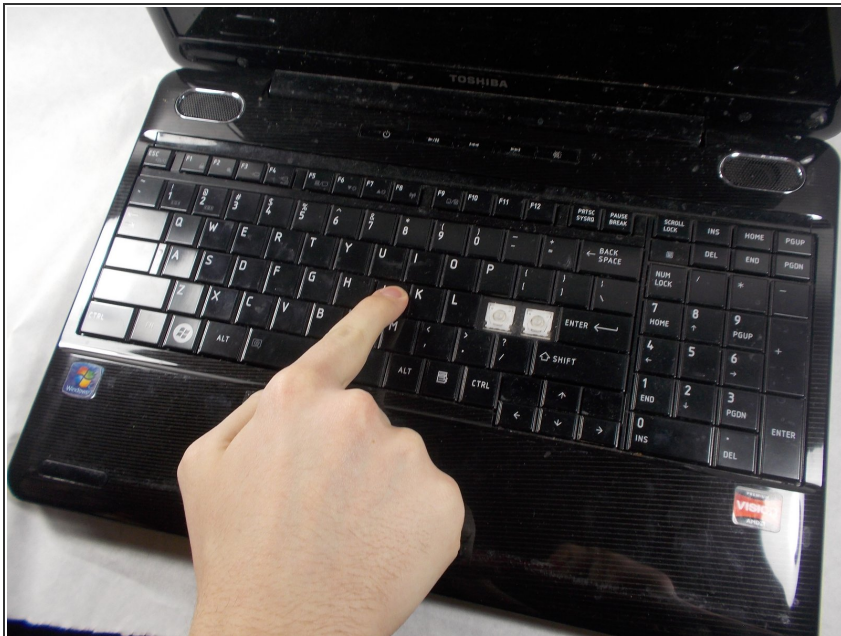
- [iFixit Opening Tools](#) (1)
-

## Step 1 — Key



- Open laptop in the front facing position.
  - Use a plastic opening tool to remove the desired key from the keyboard.
- ⚠ When lifting up on the key, do so carefully as to not break the key or its housing underneath.

## Step 2



- Use a finger to push a new key into place.

If the key does not feel like it feels to be in the correct position, retry the process following the steps in order again.