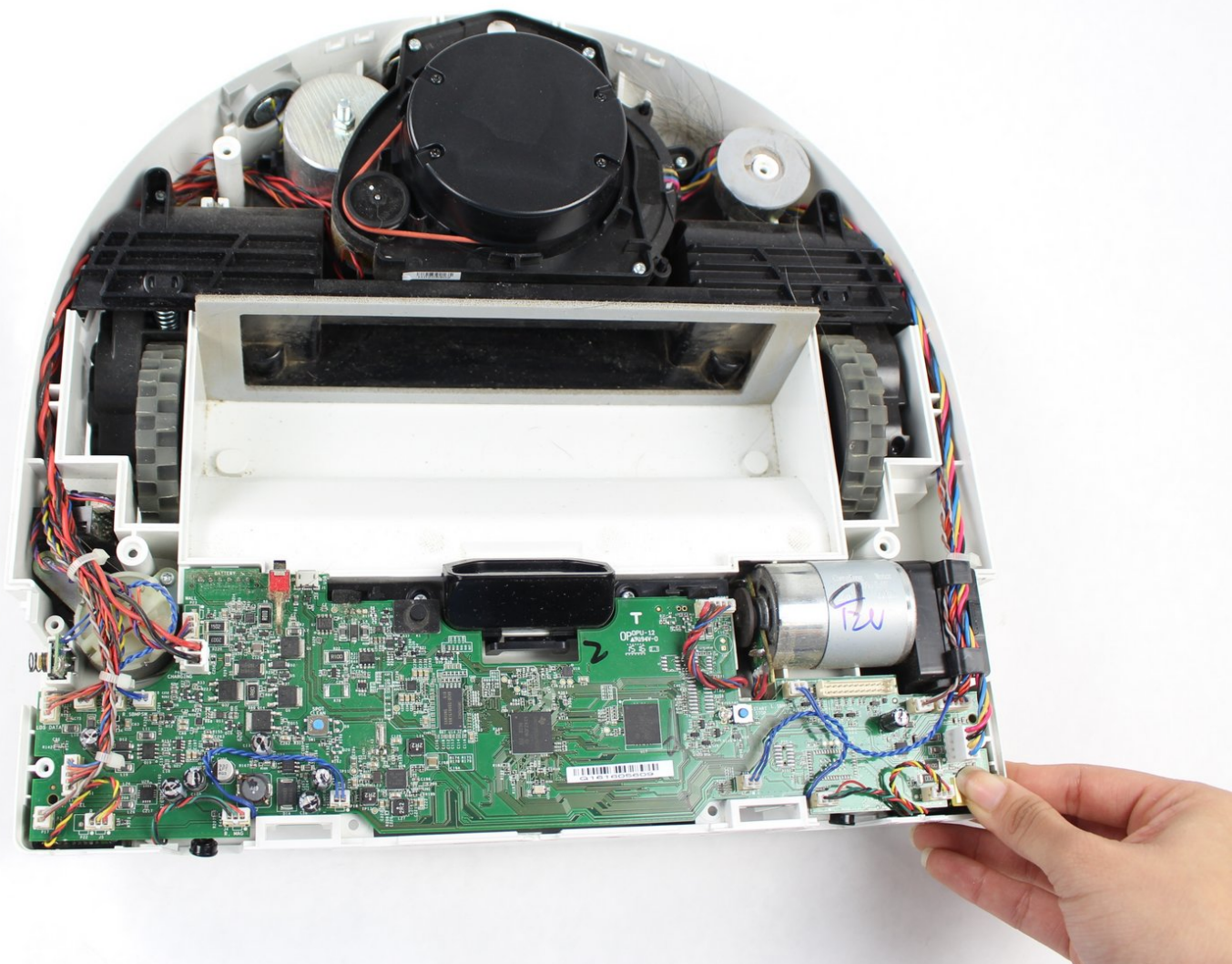




# Neato Botvac D8000 Top Face Panel Replacement

This guide will help you remove the top cover of the Botvac D8000.

Written By: Ruth Lopez



---

## INTRODUCTION

These step-by-step instructions are provided so you can remove the top cover of the robot. This can be done as a step to remove the wheel or check the wiring.



### TOOLS:

- [Phillips #1 Screwdriver](#) (1)
  - [T10 Torx Screwdriver](#) (1)
-

## Step 1 — Top Face Panel




- Grab the rear bumper with both hands on either side.

## Step 2



- Firmly pull the bumper forward at a steady pace.

 When pulling the bumper forward avoid being too rough because the bumper might break.

## Step 3



- Looking from above, remove the two 11mm screws with a Torx T10 screwdriver.

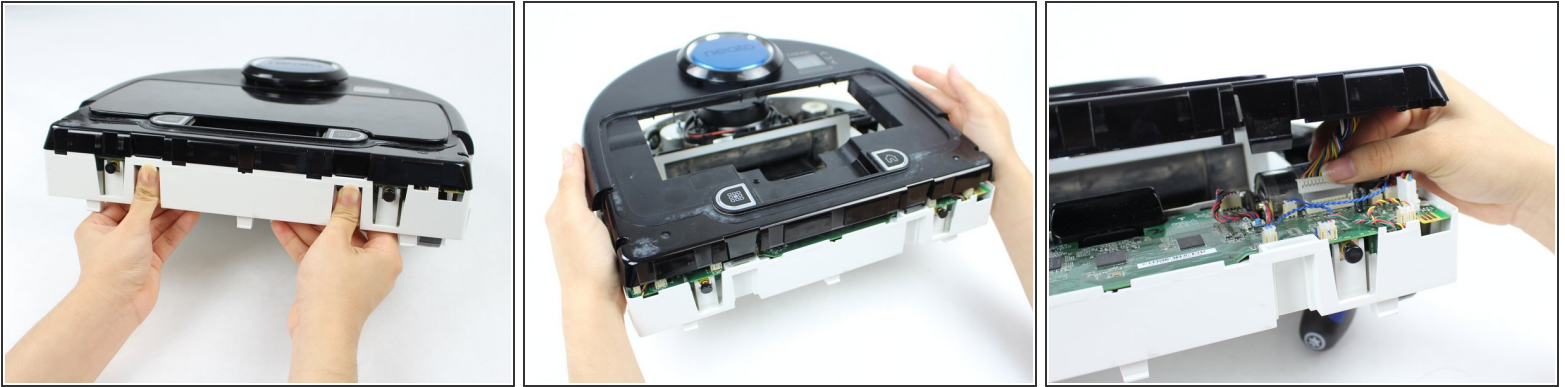
## Step 4



- Place the robot on its back and remove the six 11mm screws using a Torx T10 screwdriver.



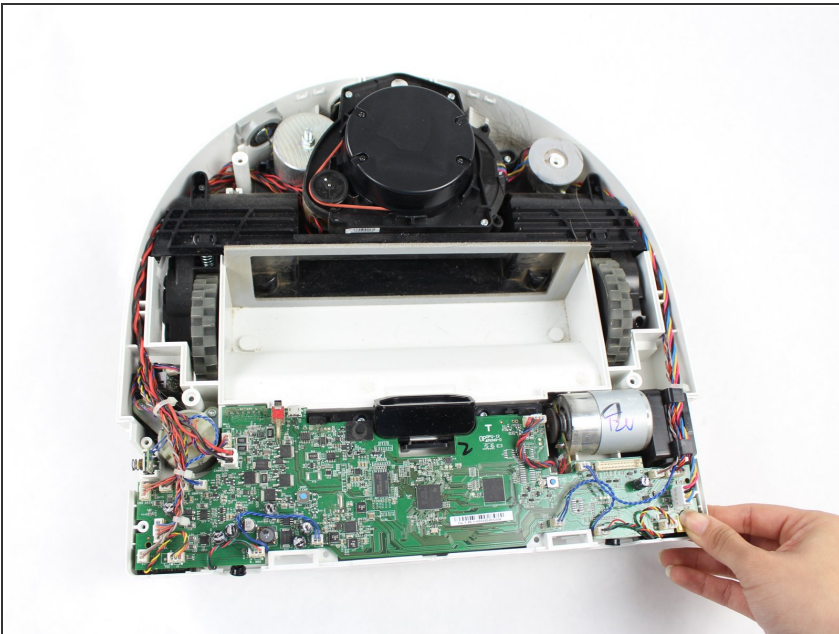
## Step 5



- Push the clips, located in the back side, inward.
- Gently lift up the top cover until you can see the wires. Then gently un-clip all the wires.

⚠ When you lift the top cover be careful because the wires are thin and fragile.

## Step 6



- Once you have carefully removed the wire clip; you can fully remove the top cover.

To reassemble your device, follow these instructions in reverse order.