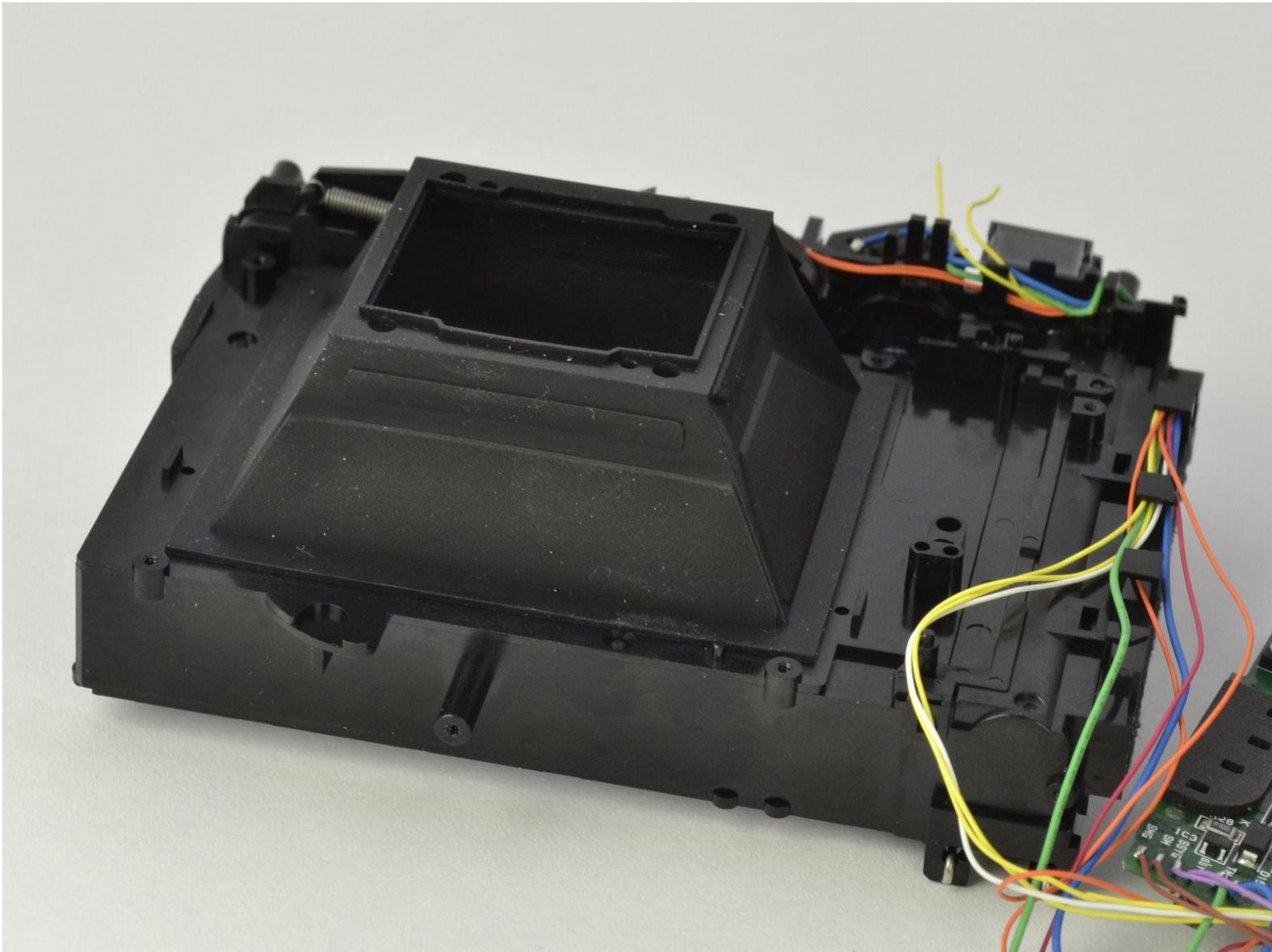




# Fujifilm Instax Minion Lens Bellow Replacement

How to replace a Fujifilm Instax Minion lens bellow.

Written By: Jonnah Lee



## INTRODUCTION

This is a simple replacement. There are many steps and components, but the most important tool you will need is a Phillips #00 screwdriver.



### TOOLS:

- [Tweezers](#) (1)
  - [Phillips #00 Screwdriver](#) (1)
  - [Spudger](#) (1)
  - [iFixit Opening Tools](#) (1)
-

## Step 1 — Camera Shell



- Remove the six 4.5 mm #00 Phillips screws from the bottom, left, and right sides.

## Step 2



- Use a spudger to remove the film slot guard on the top of the camera.
- Remove the one 4.5 mm #00 Phillips screw under the slot guard.

## Step 3



- Press the release tab on the back of the camera to open the film compartment.
- Remove the film cartridge within this compartment.

## Step 4



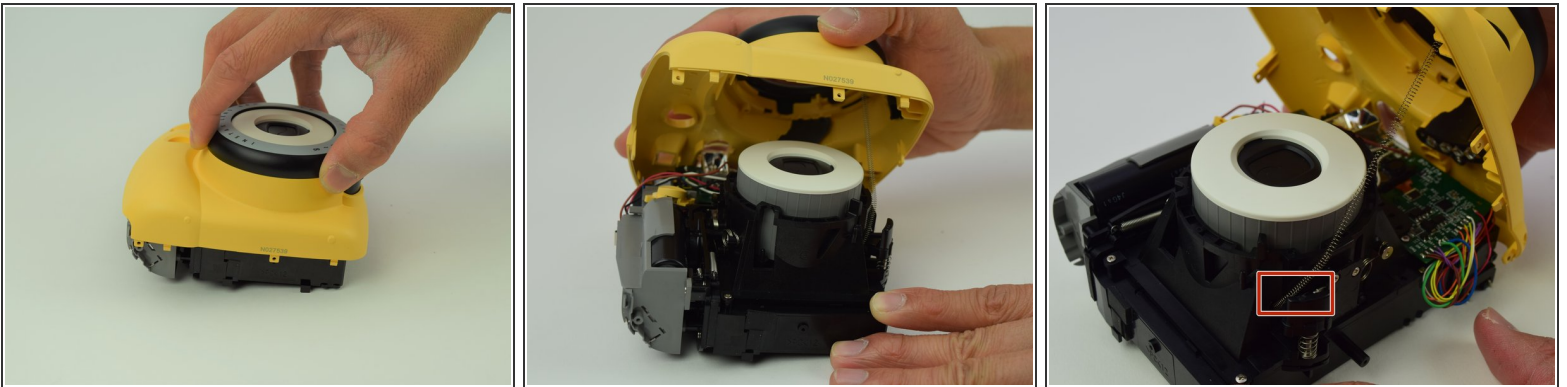
- Press the battery cover in and down to remove it.
- Remove any batteries within.

## Step 5



- Use a plastic opening tool to help pry the front and back shells apart.
- With the camera facing down, remove only the back shell.

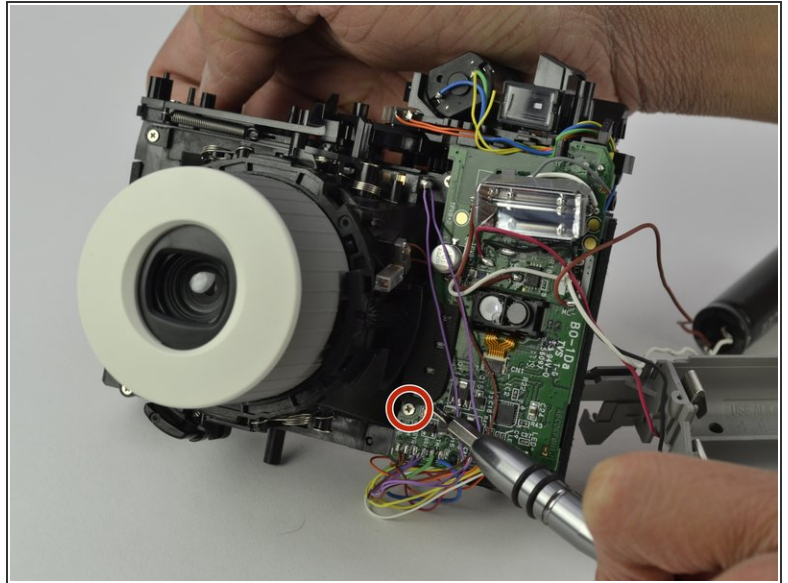
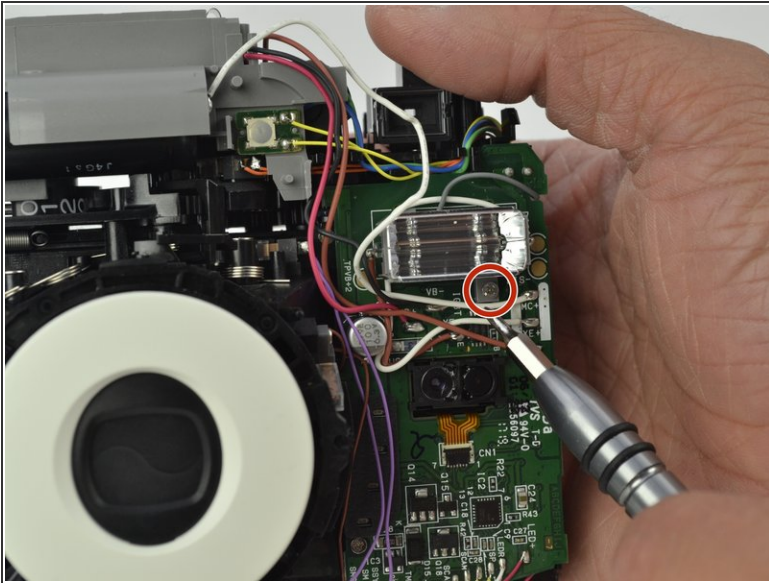
## Step 6



- Carefully peel the front side of the shell away.
- ❗ As you lift the front shell, be careful to not pull too hard since there is a spring attached to the shell and the camera body.
- Using a set of tweezers, detach the spring from the body. The spring will retract into the black and gray ring on the front shell.

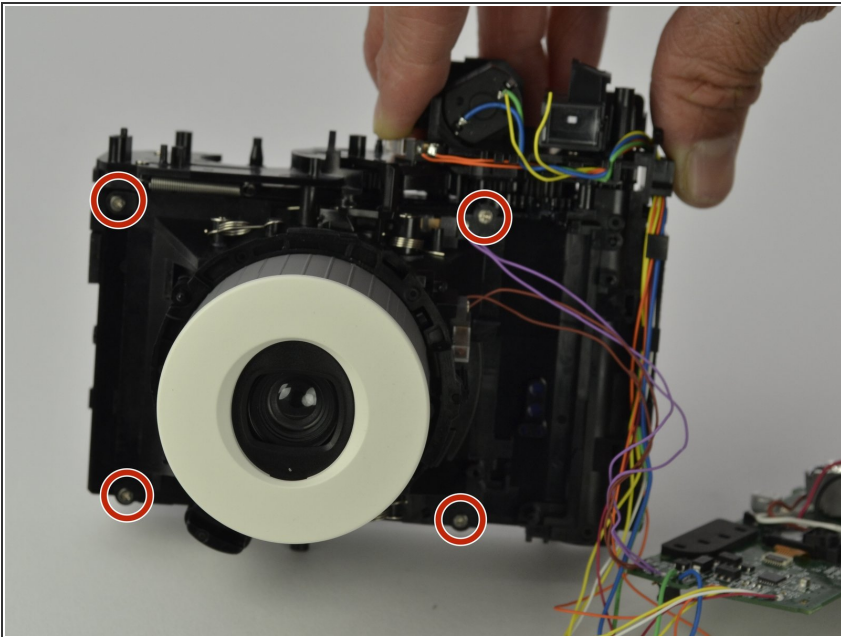


## Step 7 — Lens Bellow



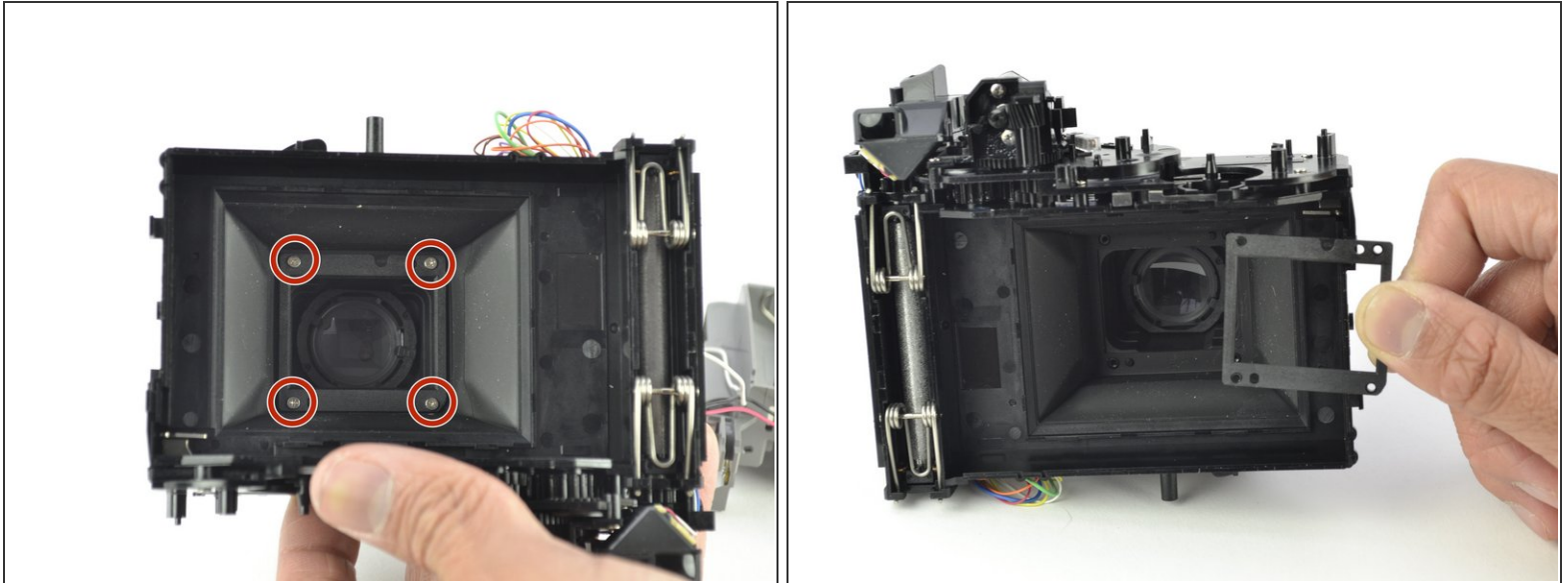
- Once the shell is off, remove the two 4.5 mm screws from the circuit board using a Phillips #00 screwdriver.

## Step 8



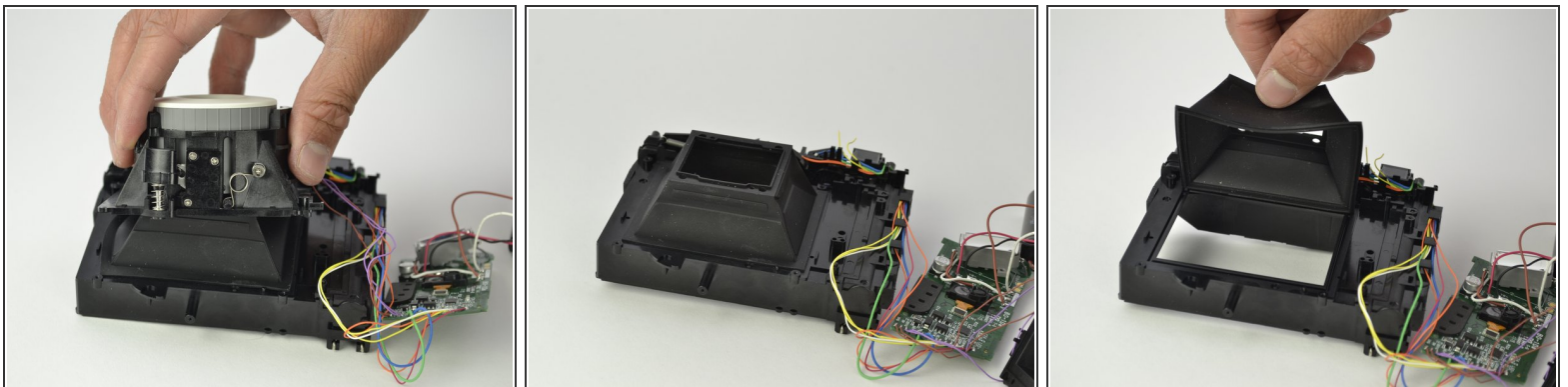
- Once the circuit board is off and to the side, remove the four 4.5 mm screws that are around the front lens case using a Phillips #00 screwdriver.

## Step 9



- Turn the camera onto its back and remove the four 4.5 mm screws attaching the lens bellow to the case using a Phillips #00 screwdriver.
  - ⓘ The lens must be extended in order to have access to the screws.
- Remove the rectangular screw casing from the back of the camera.

## Step 10



- Flip the camera over to its front side again and remove the lens casing by lifting it up and off the camera.
- Finally, remove the lens bellow by lifting it up and off the camera.

To reassemble your device, follow these instructions in reverse order.