



# Huawei Mate 10 Pro Charging Port Replacement

Use this guide to replace the charging port in...

Written By: Dominik Schnabelrauch



# INTRODUCTION

Use this guide to replace the charging port in your Huawei Mate 10 Pro smartphone.

---

## TOOLS:

[Halberd Spudger](#) (1)  
[Spudger](#) (1)  
[iFixit Opening Picks \(Set of 6\)](#) (1)  
[Suction Handle](#) (1)  
[Phillips #00 Screwdriver](#) (1)  
[Tweezers](#) (1)  
[SIM Card Eject Tool](#) (1)  
[iOpener](#) (1)

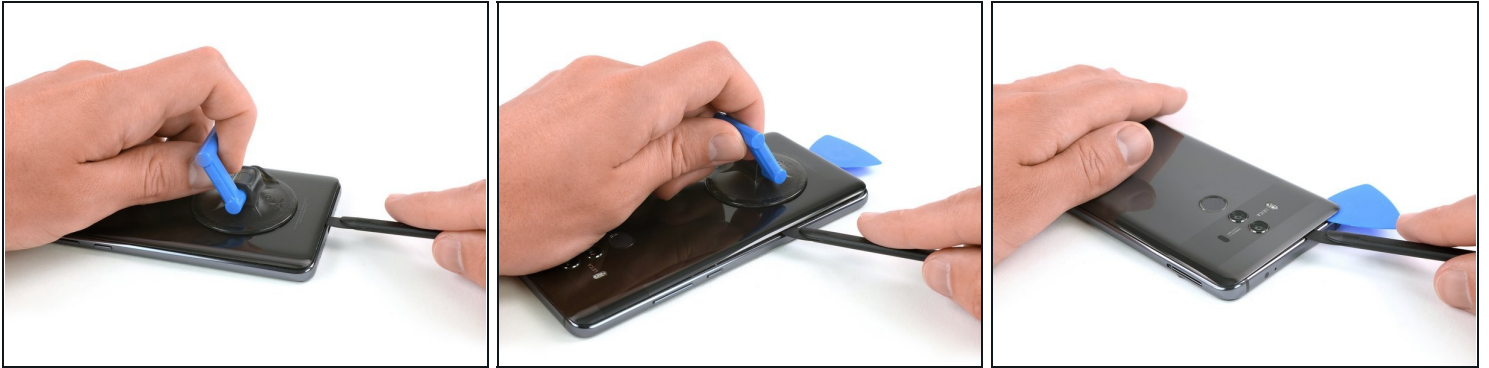
---

## Step 1 — Back Cover



- Switch off your phone.
- [Prepare an iOpener](#) and apply it to the back of the phone for about two minutes to loosen the adhesive beneath the back cover.

## Step 2



- Lift up the back cover with a suction cup until you can insert the flat end of a halberd spudger.
- Use the halberd spudger to cut the adhesive beneath the back cover on all sides of the phone.
  - ① Use opening picks to avoid the adhesive from sticking to the back cover again while cutting the adhesive on all sides.

### Step 3



⚠ Don't remove the back cover all the way, yet. The fingerprint sensor cable is still connected to motherboard.

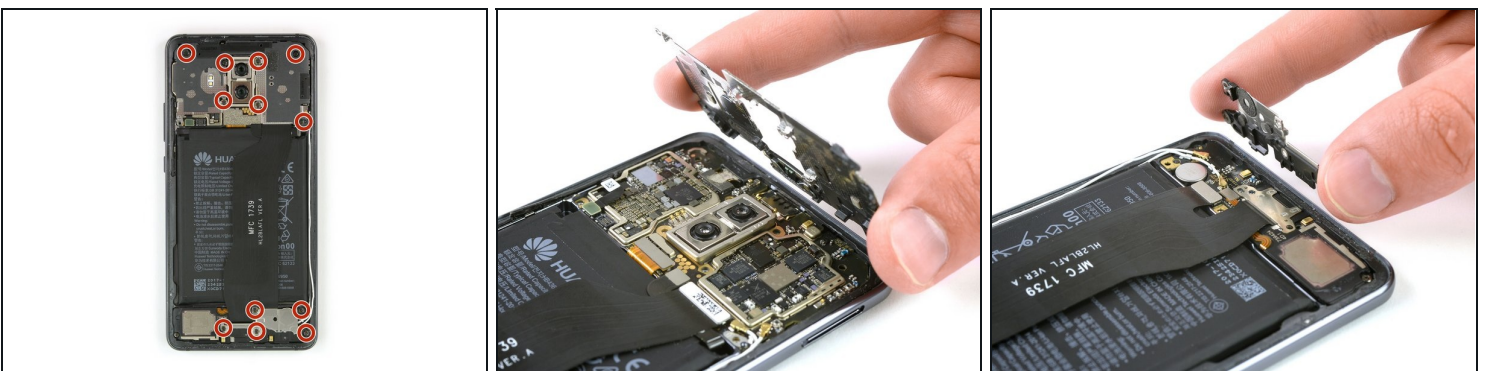
- Flip the back cover over to the side.
- Remove the Phillips #00 screw which holds down the metal shield, sitting on top of the connection of the fingerprint sensor cable.

## Step 4



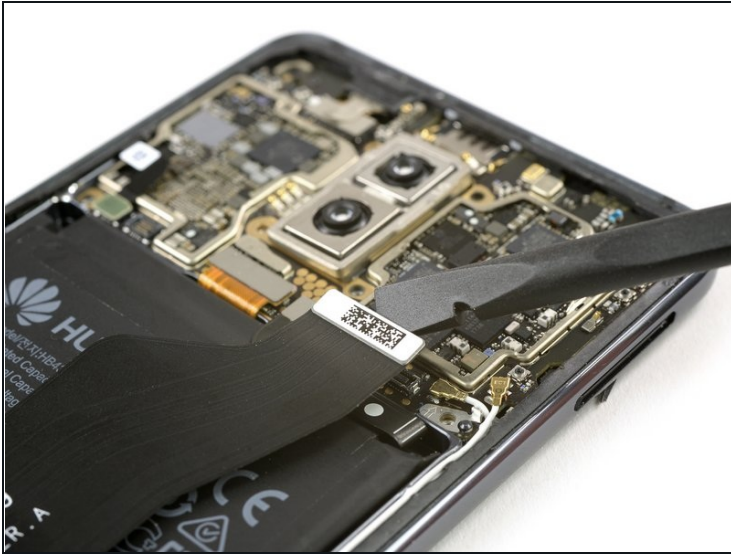
- Use a pair [tweezers](#) to remove the metal shield covering the connector of the fingerprint sensor.
- Disconnect the fingerprint sensor cable with a spudger.
- ☑ When reassembling your phone apply new adhesive where it is necessary.

## Step 5 — Shields



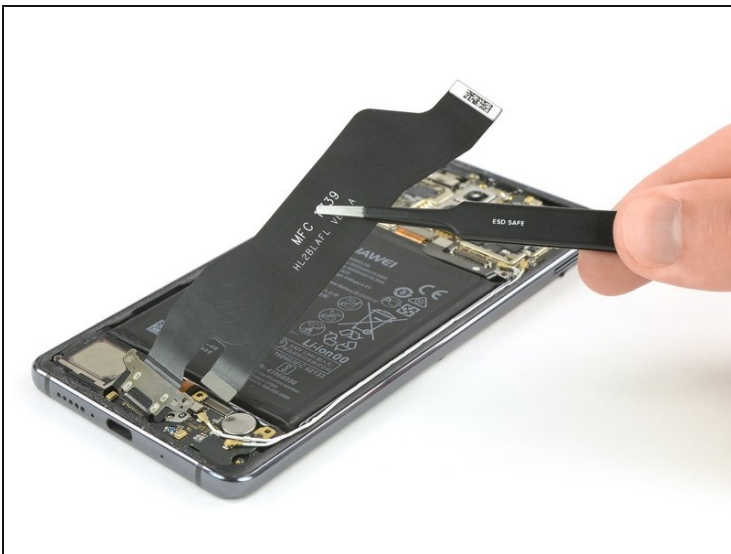
- Remove the twelve Phillips #00 screws.
- Carefully remove the shields on top of the motherboard and the charging board.
  - ⓘ In case the shields do not pop out easily on their own after you removed the Phillips screws, you can use the pointed end of a spudger to pry them out.

## Step 6 — Charging Port



- Use a spudger to disconnect the charging port flex cable from the motherboard and from the daughterboard.

## Step 7



- Use a pair of [tweezers](#) to carefully remove the charging port including its flex cable.
  - ① The charging port sits tightly in its recess. In case you have trouble removing it, use the flat end of a halberd spudger to pry it out.

To reassemble your device, follow these instructions in reverse order.

