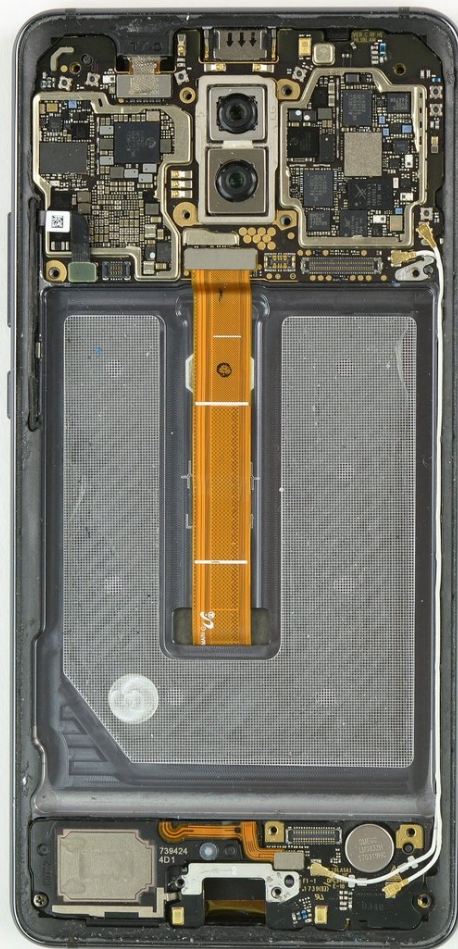




Huawei Mate 10 Pro Battery Replacement

Use this guide to replace a weak battery in...

Written By: Dominik Schnabelrauch



INTRODUCTION

Use this guide to replace a weak battery in your Huawei Mate 10 Pro.

Before disassembling your phone, **discharge the battery below 25%**. The battery can catch fire and/or explode if accidentally punctured, but the chances of that happening are much lower if discharged.



TOOLS:

[Halberd Spudger](#) (1)
[Spudger](#) (1)
[iFixit Opening Picks \(Set of 6\)](#) (1)
[Suction Handle](#) (1)
[Tweezers](#) (1)
[Phillips #000 Screwdriver](#) (1)
[SIM Card Eject Tool](#) (1)
[iOpener](#) (1)
[Plastic Cards](#) (1)



PARTS:

[Huawei Mate 10, Mate 10 Pro, or P20 Pro Replacement Battery](#) (1)

Step 1 — Back Cover



- Switch off your phone.
- [Prepare an iOpener](#) and apply it to the back of the phone for about two minutes to loosen the adhesive beneath the back cover.

Step 2



- Lift up the back cover with a suction cup until you can insert the flat end of a halberd spudger.
- Use the halberd spudger to cut the adhesive beneath the back cover on all sides of the phone.
 - ① Use opening picks to avoid the adhesive from sticking to the back cover again while cutting the adhesive on all sides.

Step 3



⚠ Don't remove the back cover all the way, yet. The fingerprint sensor cable is still connected to motherboard.

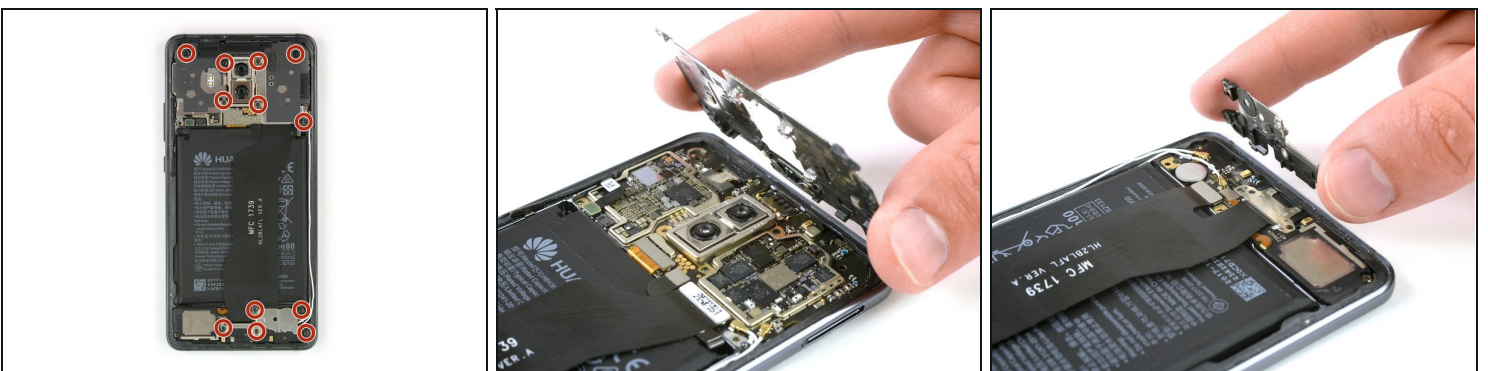
- Flip the back cover over to the side.
- Remove the Phillips #00 screw which holds down the metal shield, sitting on top of the connection of the fingerprint sensor cable.

Step 4



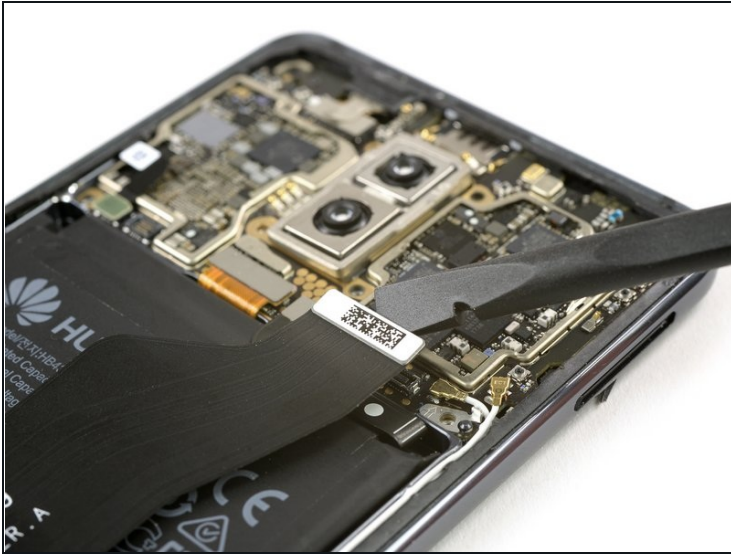
- Use a pair [tweezers](#) to remove the metal shield covering the connector of the fingerprint sensor.
- Disconnect the fingerprint sensor cable with a spudger.
- ☑ When reassembling your phone apply new adhesive where it is necessary.

Step 5 — Shields



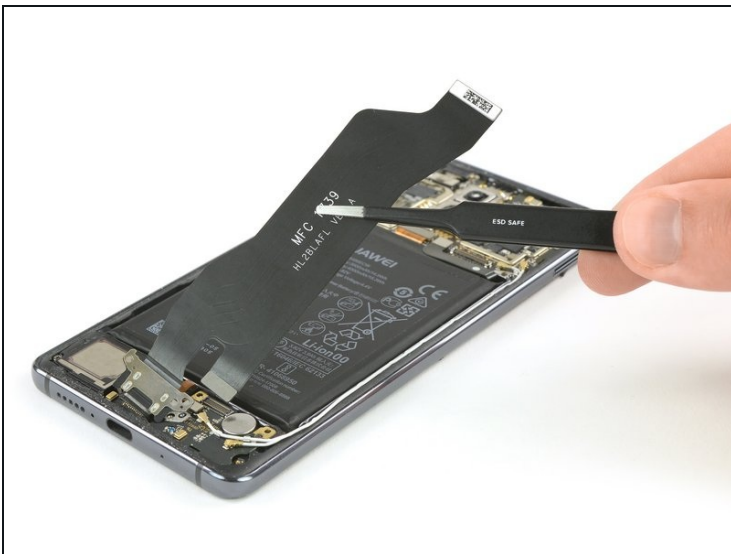
- Remove the twelve Phillips #00 screws.
- Carefully remove the shields on top of the motherboard and the charging board.
 - ① In case the shields do not pop out easily on their own after you removed the Phillips screws, you can use the pointed end of a spudger to pry them out.

Step 6 — Charging Port



- Use a spudger to disconnect the charging port flex cable from the motherboard and from the daughterboard.

Step 7



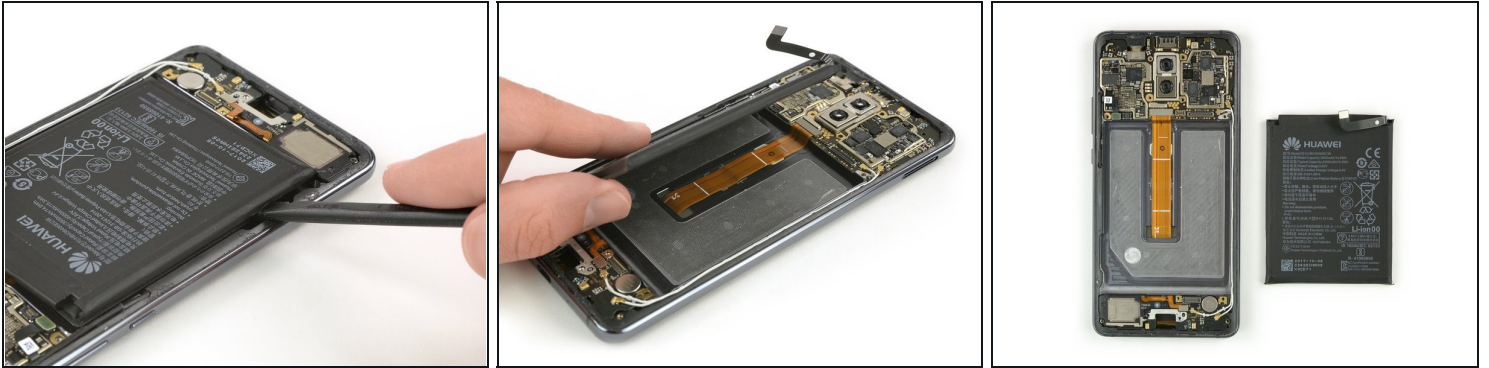
- Use a pair of [tweezers](#) to carefully remove the charging port including its flex cable.
 - ① The charging port sits tightly in its recess. In case you have trouble removing it, use the flat end of a halberd spudger to pry it out.

Step 8 — Battery



- Use a spudger to disconnect the battery flex cable.
- [Apply an iOpener](#) on the screen for at least one minute to loosen the adhesive beneath the battery.

Step 9



⚠ The display flex cable runs underneath the battery. So be careful not to damage it when loosening the adhesive. Also take care not to bend or puncture the battery at any time.

- Use a spudger to carefully pry up the battery and slide along the side to separate the adhesive.
- Remove the battery.
- ☑ When reassembling your phone replace the old adhesive with double-sided tape or [pre-cut adhesive](#).

To reassemble your device, follow these instructions in reverse order.