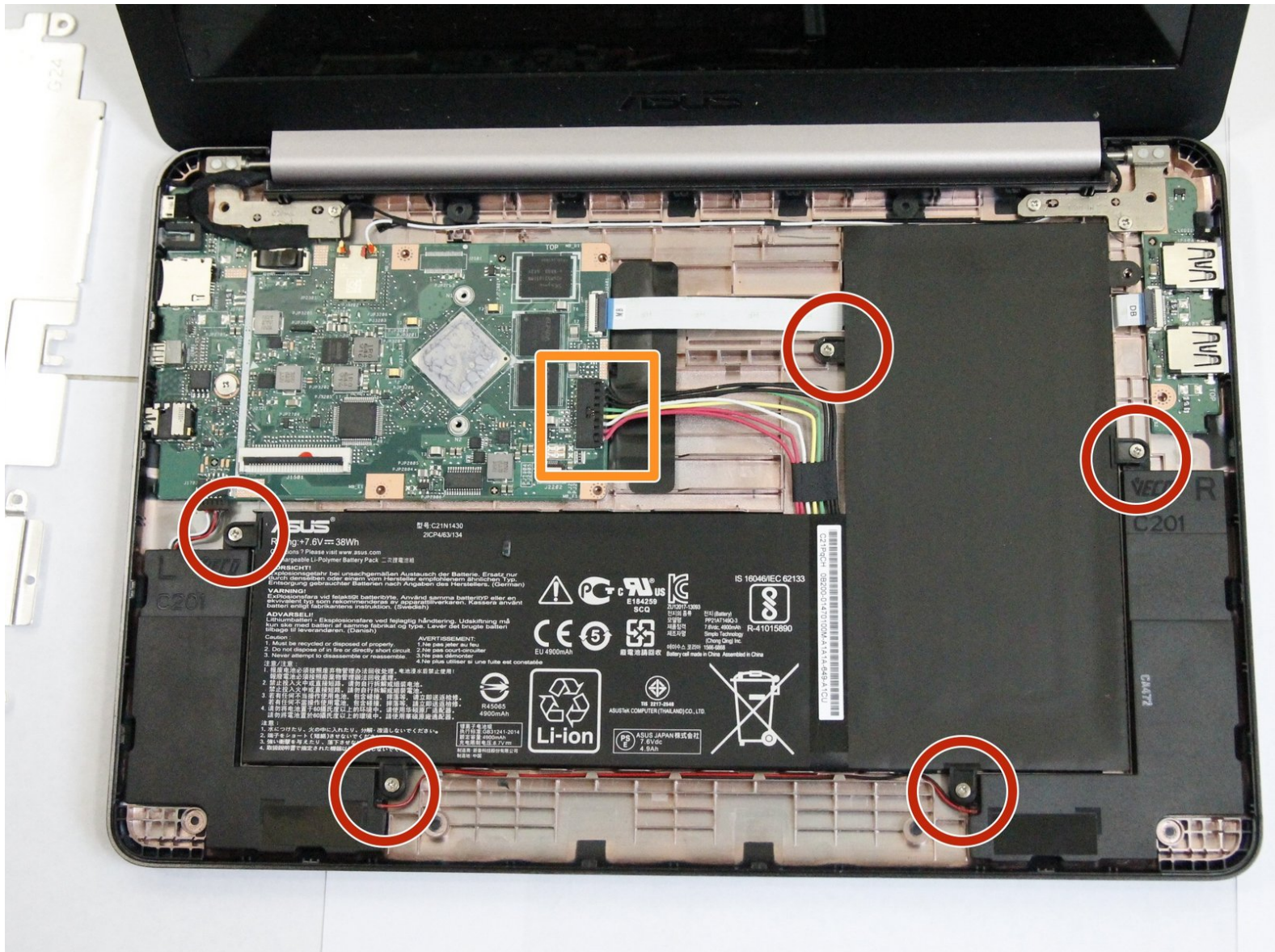




Asus Chromebook C201PA-DS02-LG Battery Replacement

How to replace an Asus Chromebook C201PA-DS02-LG battery.

Written By: Ashley Humpal



INTRODUCTION

Is your battery damaged or keep dying? Then this is the guide for you.

TOOLS:

- [iFixit Opening Tools](#) (1)
 - [Metal Spudger](#) (1)
 - [Phillips #0 Screwdriver](#) (1)
-

Step 1 — Keyboard



- Use a metal spudger to pry off the two feet closest to the hinge of the laptop.
- ☑ The feet are attached to the laptop by adhesives, therefore they may not stick as well after multiple removals.

Step 2



- Use a Phillips #0 screwdriver to unscrew the six 5mm screws.
- Use a Phillips #0 screwdriver to unscrew the two 6mm screws.

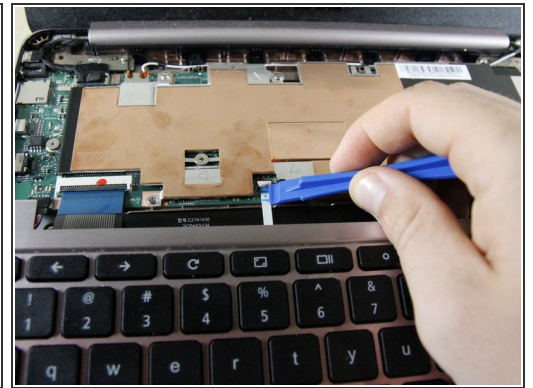
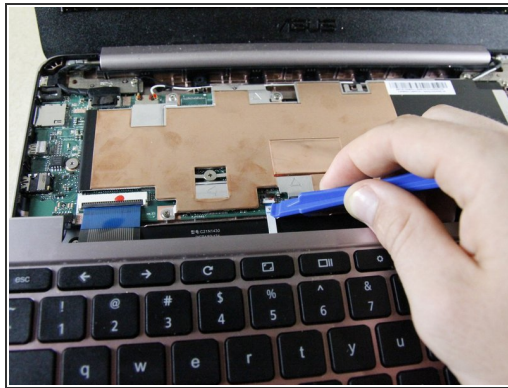
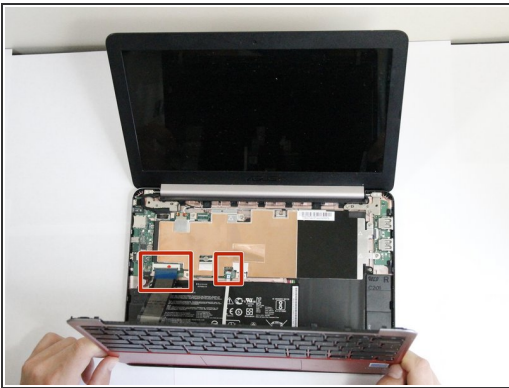
Step 3



- Use a plastic opening tool to pry the keyboard off the edges of the computer.

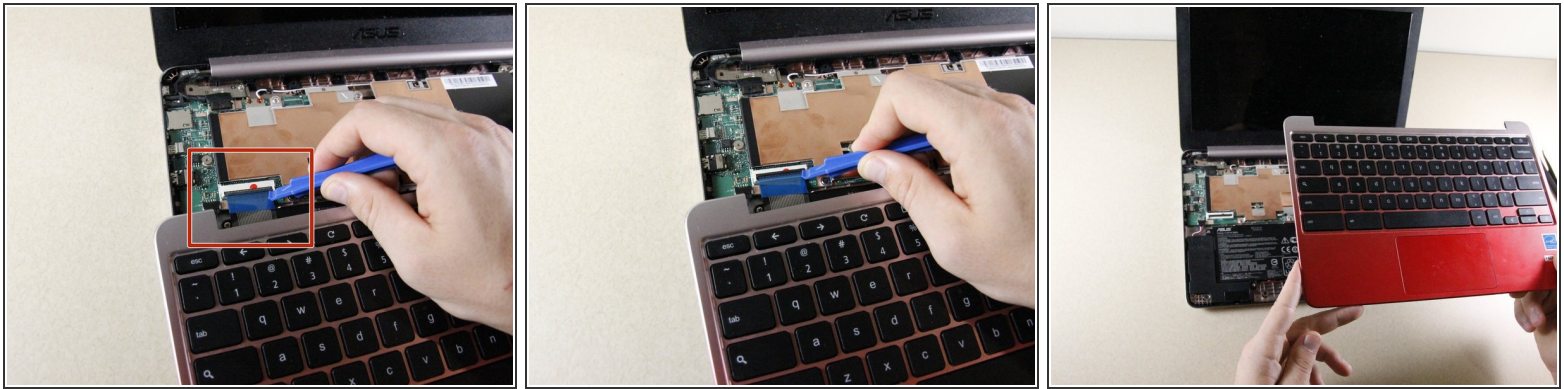
i The edges will make a popping noise.

Step 4



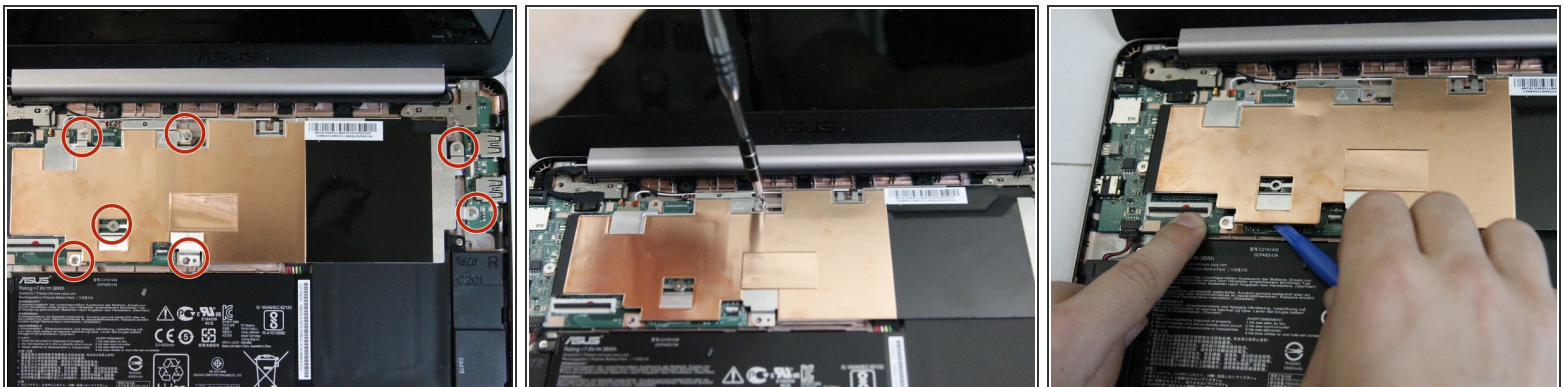
- Flip up the white bar that connects the thin white strip using a plastic opening tool.
- Grab the thin white strip and pull straight back to remove the strip from the connector.

Step 5



- Use a plastic opening tool to lift the black bar above the wide black strip in the connector.
- Grab the wide black strip and pull straight back to remove the strip from the connector.
- Remove the keyboard by lifting it straight up.

Step 6 — Metal Plate



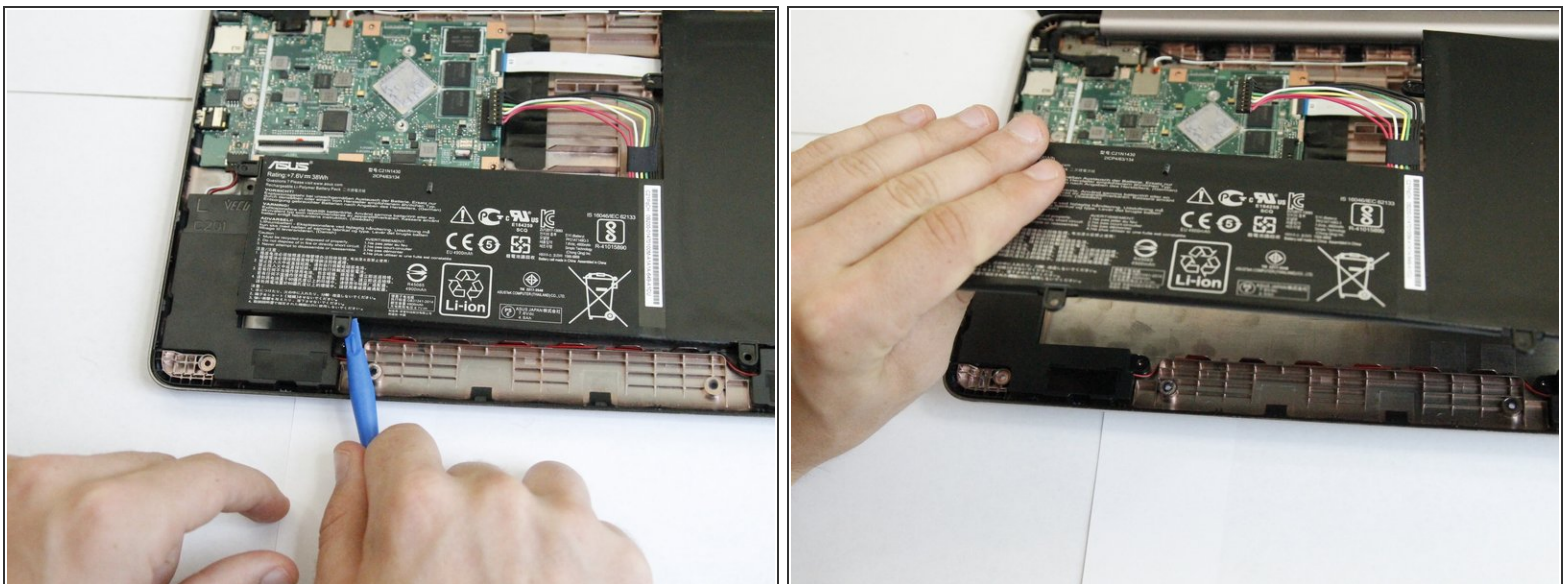
- Unscrew the seven 4mm screws using a Phillips #0 screwdriver.
- Wiggle the plate back and forth to loosen the adhesive under the plate.
- ☞ The adhesive will not be the same after removal and more adhesive may be necessary upon reassembly.
- Rotate the screwdriver in a counterclockwise direction to remove the screws.
- ⚠ Do not rest your arm or hand in the adhesive.

Step 7 — Battery



- Use a Phillips #0 screwdriver to unscrew the 4mm screws. Rotate the screwdriver in a counterclockwise direction to undo the screws.
- Remove the rainbow connector by firmly grasping the rainbow wires and pulling straight back. It will help to brace the motherboard when you pull.

Step 8



- Use the plastic opening tool to lift up the battery and remove it.
- ⚠ Do not dispose of the battery in normal waste. The chemicals inside are toxic. Find out where to dispose of properly in your neighborhood.

To reassemble your device, follow these instructions in reverse order.