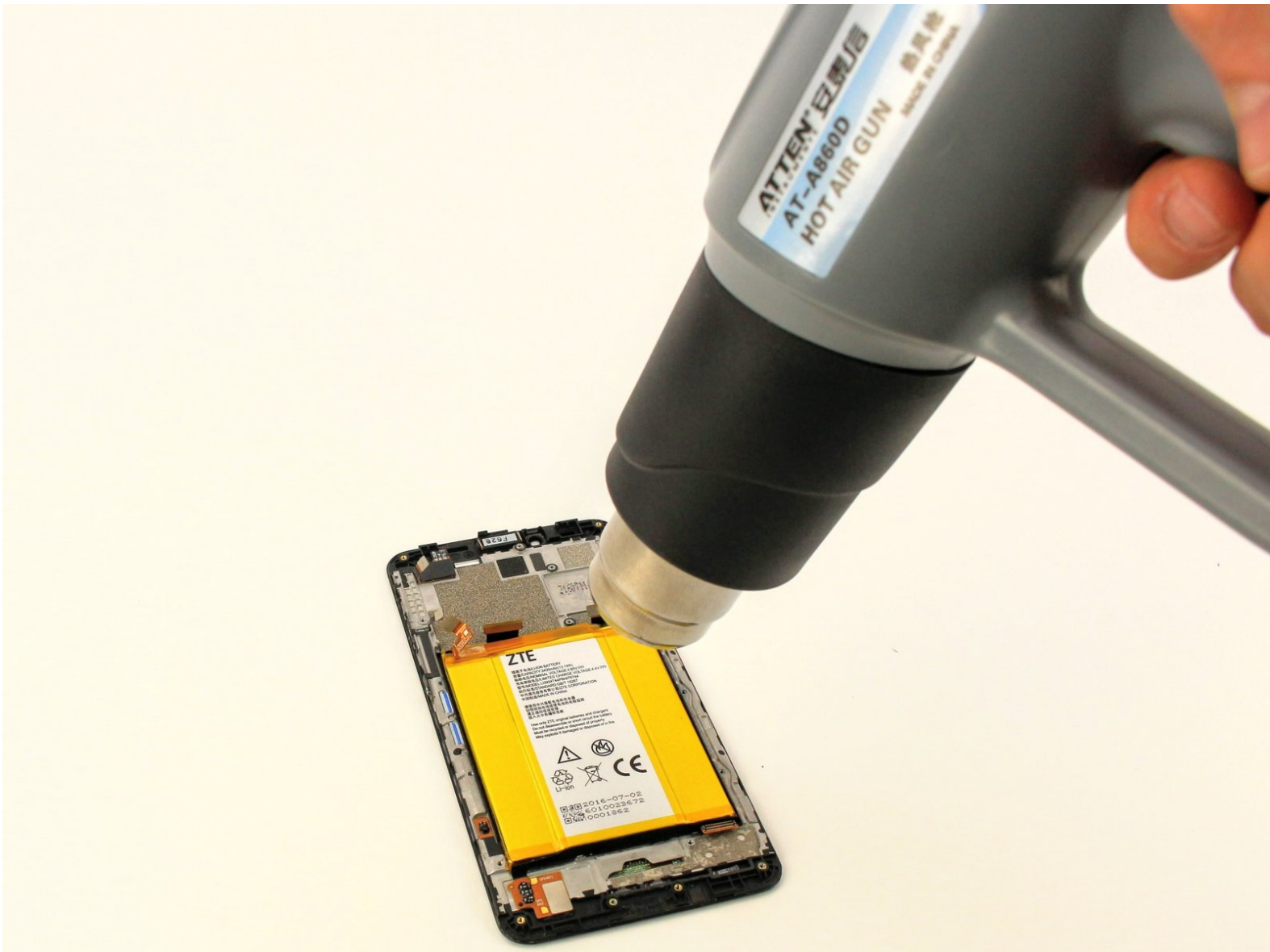




ZTE ZMax Pro Battery Replacement

How to replace the battery in the ZTE ZMax Pro model Z981.

Written By: Nicholas Leacox



INTRODUCTION

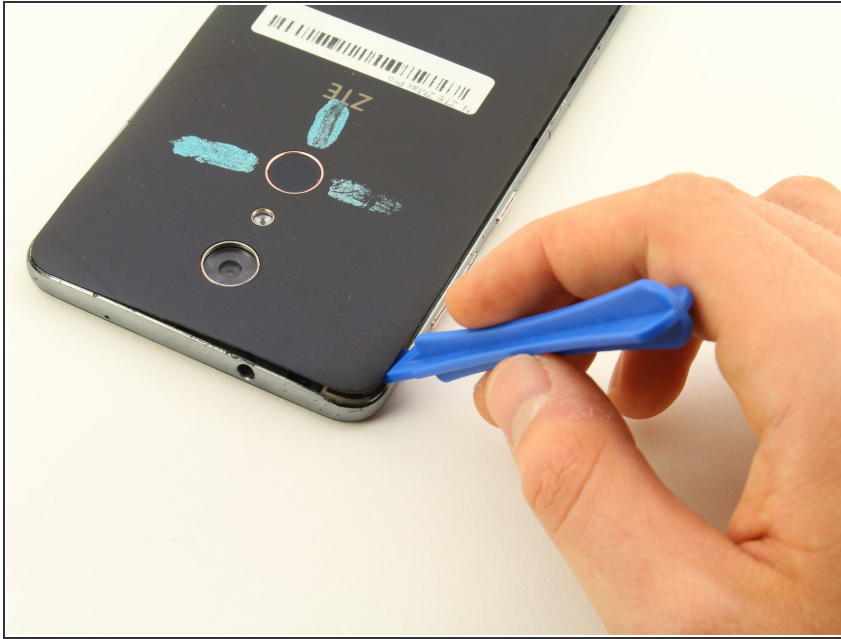
Over time, the battery life can run low and stop recharging. This guide will show you how to replace the battery. You will need a plastic opening tool, tweezers, a Phillips #00 screwdriver, a heat gun, and a plastic spudger to complete this guide.



TOOLS:

- [iFixit Opening Picks set of 6](#) (1)
 - [iFixit Opening Tools](#) (1)
 - [Tweezers](#) (1)
 - [Phillips #00 Screwdriver](#) (1)
 - [Heat Gun](#) (1)
 - [Spudger](#) (1)
-

Step 1 — Back Panel Assembly



- Flip the phone over so that the back panel of the phone is facing up.
- Wedge the plastic opening tool between the black outer panel and the silver side panel.
- Push down on the plastic opening tool to separate the back panel from the rest of the phone.
- Continue to do this around all sides of the phone until the back panel has popped all the way off.

i Removing the back panel may make loud popping noises which is normal.

Step 2



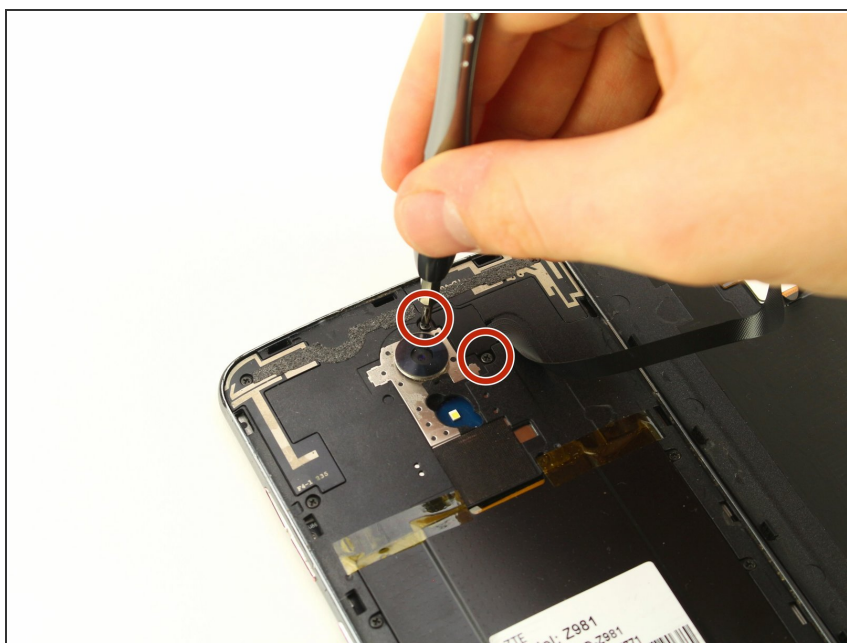
- Using your fingers, slide the SIM card all the way out of the phone.

Step 3



- Remove the yellow Kapton tape by using the tweezers to peel it up and away from the device.

Step 4



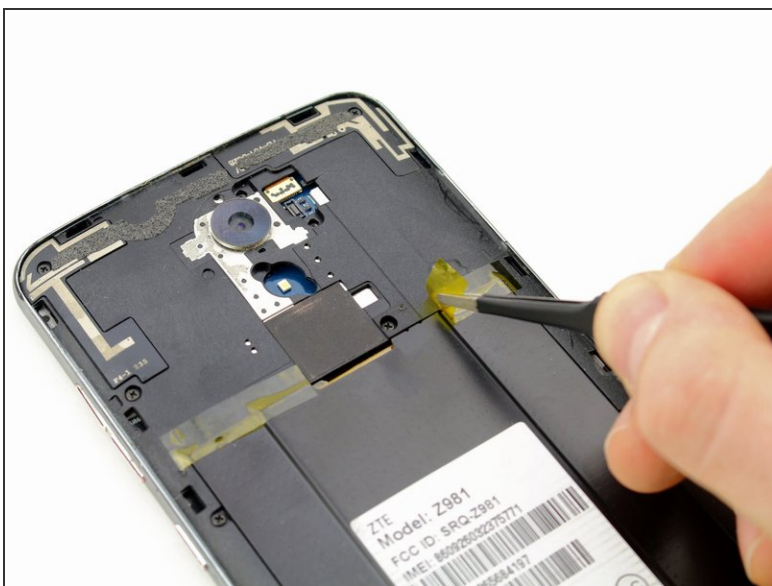
- Using the Phillips #00 screwdriver, remove the two 3.0 mm screws located near the top of the phone, next to the rear camera.

Step 5



- Remove the fingerprint sensor flex cable, using the plastic opening tool to lift it out.

Step 6



- Using the tweezers, peel back the yellow Kapton tape located on the right side of the phone.

Step 7



- Using the Phillips #00 screwdriver, remove the 15, 3.0 mm rear panel screws located around the perimeter of the phone.

Step 8



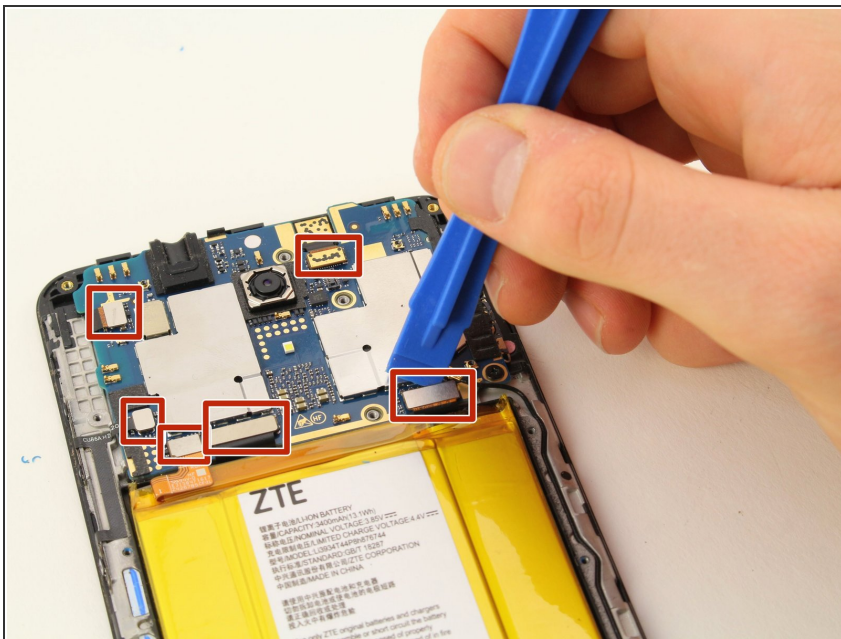
- Flip the phone over so that the screen is facing up.
 - Wedge the plastic opening tool between the screen and the rear panel.
 - Push up on the opening tool to separate the panel from the phone.
 - Continue to do this around the entire phone until the rear panel is no longer connected to the device.
- i** The rear case and screen are fastened tightly to each other. It might help to use the picks as wedges to keep the case and screen separated as you run the opening tool along the edges.

Step 9 — Motherboard



- Use the tweezers to peel off the yellow Kapton tape.

Step 10



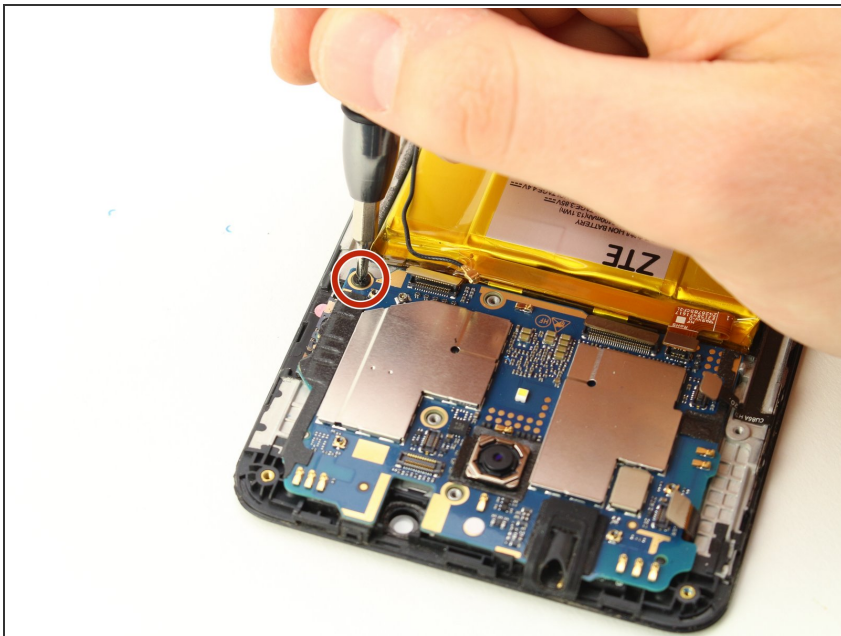
- Use the plastic opening tool to remove the connectors on the motherboard.

Step 11



- Use tweezers to remove the antenna. The antenna comes up on the right side of the phone, by the battery, and is attached to the motherboard.

Step 12



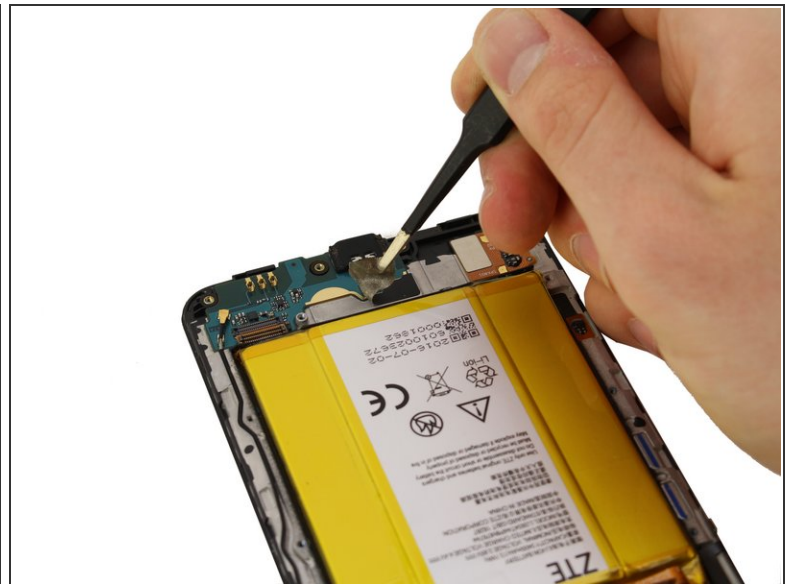
- Using the #00 Phillips screwdriver, remove the 3.0 mm screw located on the right edge of the phone, above the battery.

Step 13



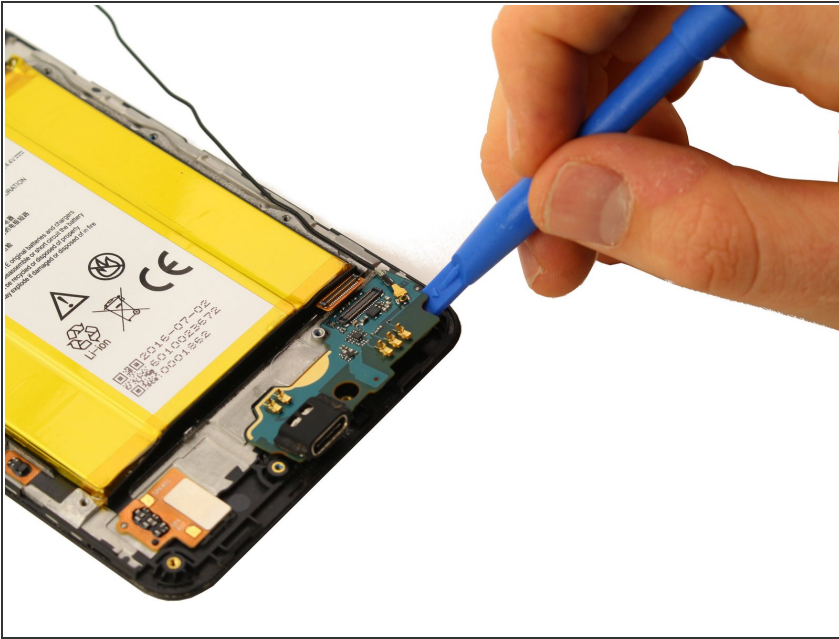
- Wedge the plastic opening tool underneath the motherboard which is located at the top of the phone.
- Push down on the plastic opening tool, lifting the motherboard away from the phone.
- Continue to do this around all sides of the motherboard until it is fully removed from the phone.

Step 14 — Battery



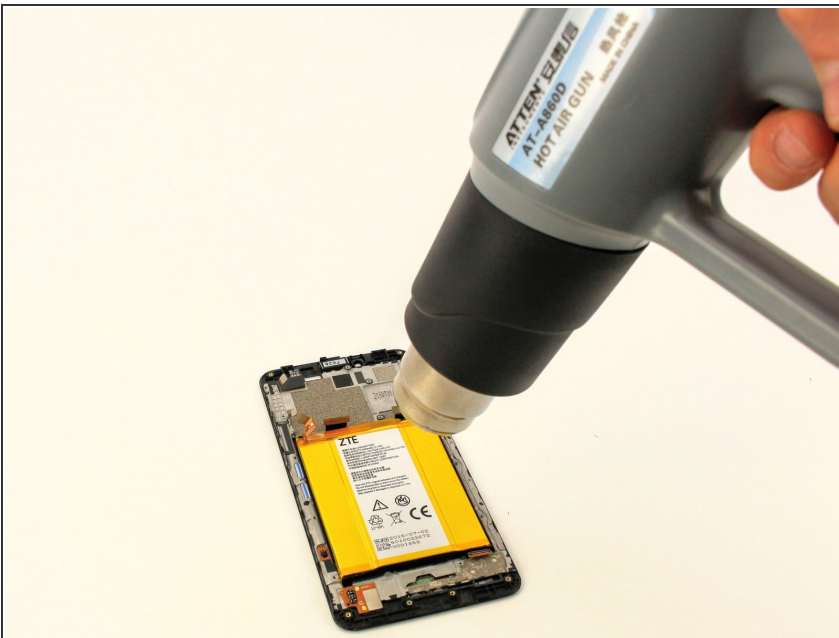
- Use tweezers to peel off the tape at the bottom of the phone.

Step 15



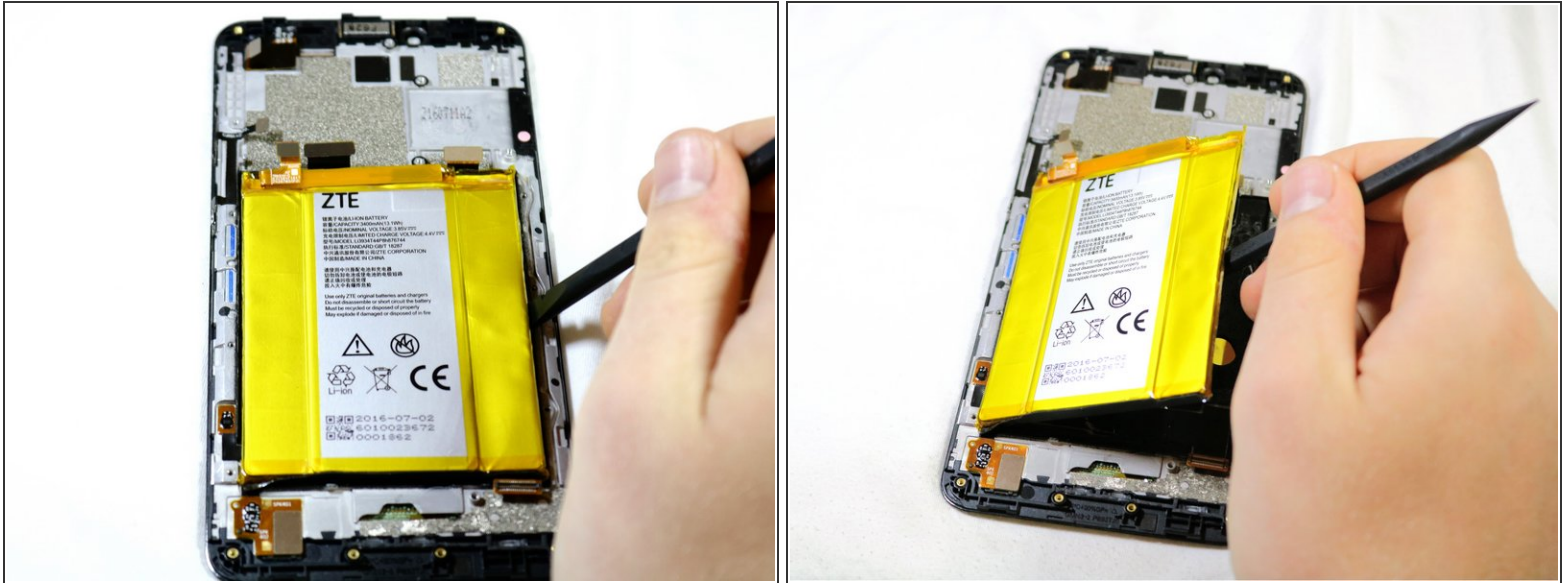
- Wedge the plastic opening tool under the charging port board at the bottom of the phone.
 - Push down on the plastic opening tool so the board pulls away from the phone.
 - Continue to do this around the charging port board until it comes all the way off the phone.
- i** The board is glued to the case so make sure to work around all edges to ease removal. Trying to pull it away from one edge can cause damage to the board.

Step 16



- Use a heat gun to heat the adhesive under the battery.
 - Heat the battery for 1 minute then check if it is pliable. If needed, heat in intervals of 10 seconds until the battery can be removed.
- !** Over heating the battery can cause the battery to explode. Exercise caution heating the battery.

Step 17



- Use a nylon spudger to pry the battery from the phone.

- ⚠ The battery may bend a little during removal which is normal. However, make sure the battery doesn't bend too much as that can make it dangerous. If it looks like it's folding, try prying it from a different angle.
- ⚠ Avoid using metal tools to pry the battery out of the case as it can pierce the battery.
- i Contents of the battery are extremely polluting to the environment. Do not throw it away in the recycling. Instead, try finding out what your local community does to dispose of batteries.
- ✦ After removing the battery, the adhesive will not have as strong of a hold on the new battery. This should not be an issue. However, if the adhesive strength is negligible, you can consider buying adhesive and applying it before inserting the new battery.

To reassemble your device, follow these instructions in reverse order.