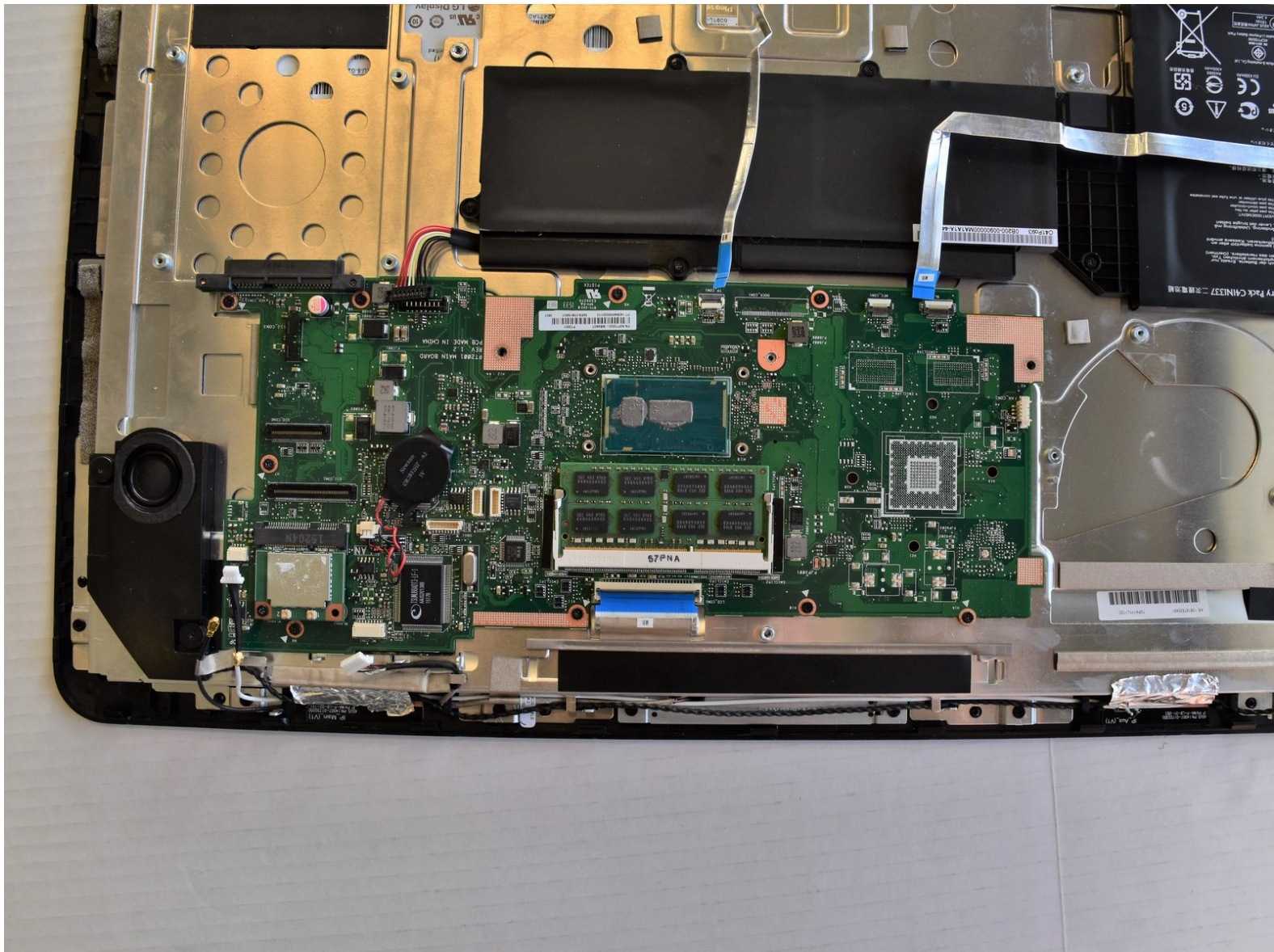




# ASUS Portable AiO PT2001 Motherboard Replacement

How to replace the motherboard of the ASUS Portable AiO PT2001.

Written By: Vinu Weerasinghe



# INTRODUCTION

This guide will show how to replace the motherboard of the ASUS Portable AiO PT2001.



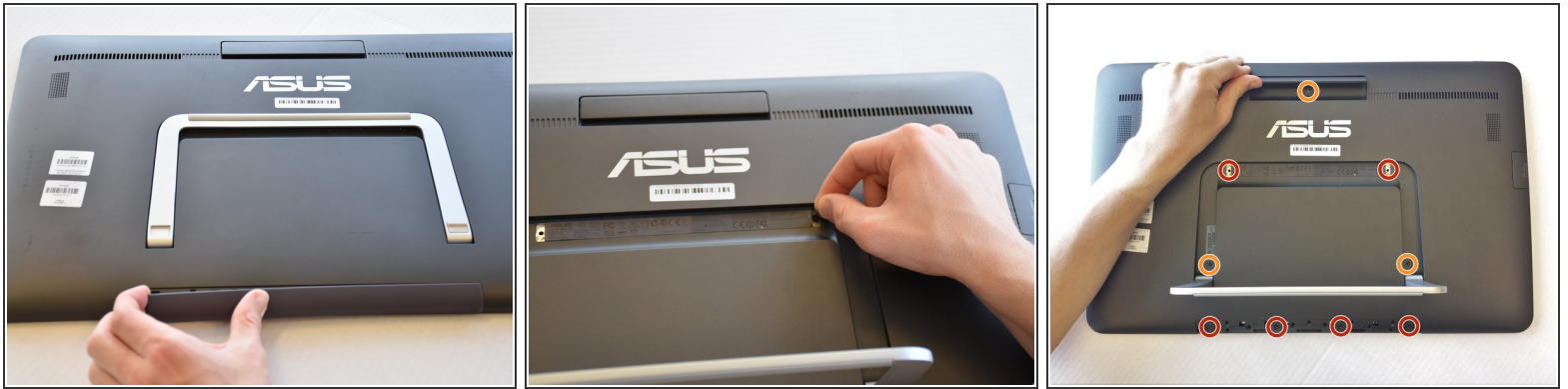
## TOOLS:

- [Spudger](#) (1)
- [Phillips #1 Screwdriver](#) (1)
- [iFixit Opening Tools](#) (2)

*At least one wide plastic opening tool.*

---

## Step 1 — Back Panel



- Remove the grey scuff guard at the bottom of the PC by pressing down on it, and pulling it away.
- Lift the hinge and remove the grey rubber tabs on either side of the PC's model information.
- Remove the two 7.62mm Phillips #1 screws beneath the rubber tabs under the hinge and the four 7.62mm Phillips #1 screws where the scuff guard was removed.
- Remove the two 4.74mm Phillips #1 screws under the hinge (near the hinge joints) and a 4.74mm Phillips #1 screw under the handle.

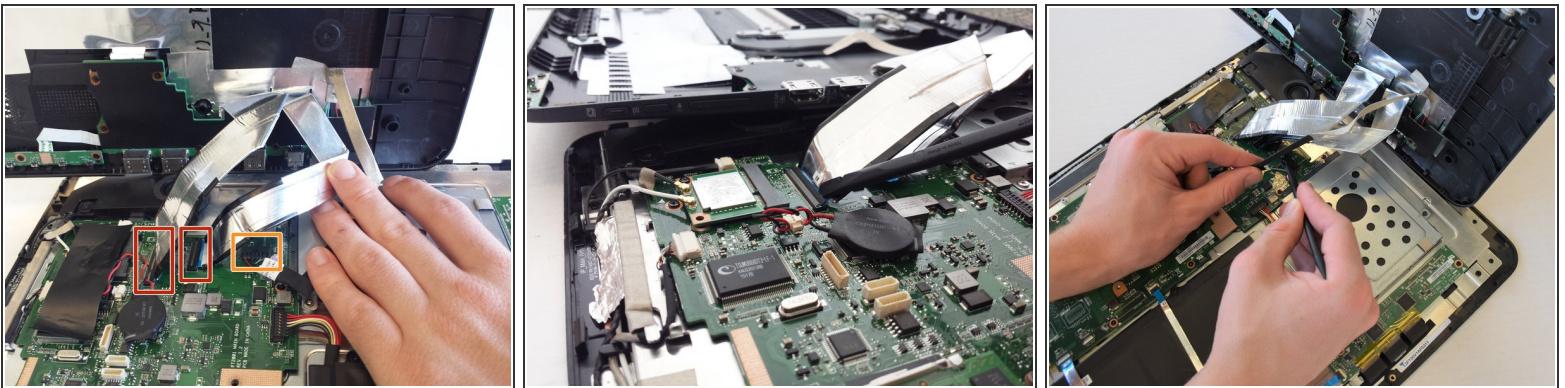


## Step 2



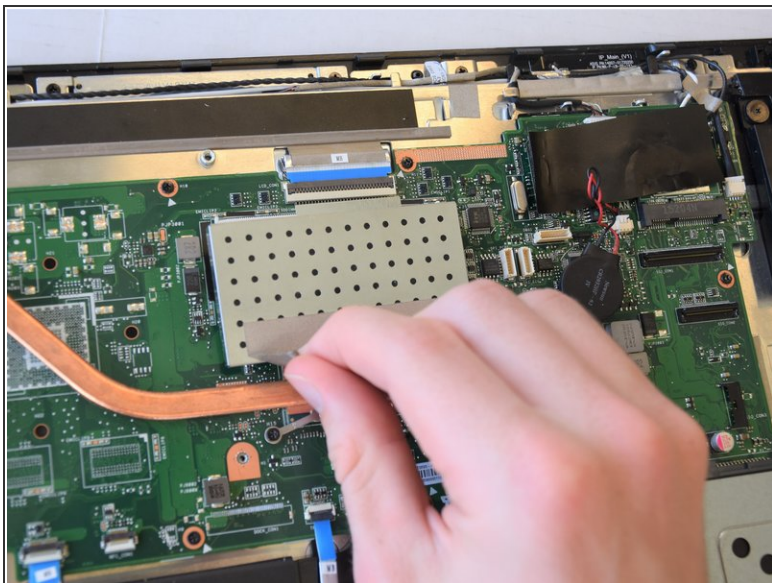
- Use 1-2 plastic opening tools or nylon spudgers to firmly pry open the back panel.
- ⓘ We recommend that you start prying the panel where the scuff guard was removed.
- ⓘ Prying the back panel will cause loud popping noises. This is just the sound of the clips that hold the back panel to the PC popping off.
- ⚠ Using excess force while prying can break the clips that hold the back panel and can damage the ports on the side of the PC.

## Step 3



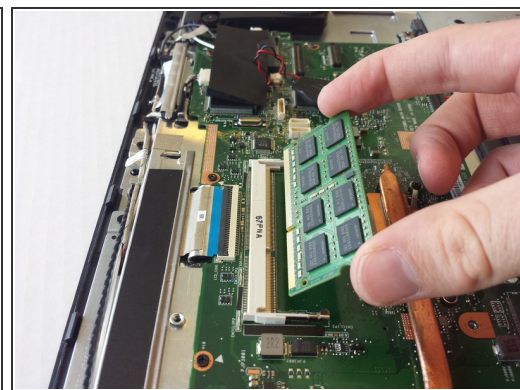
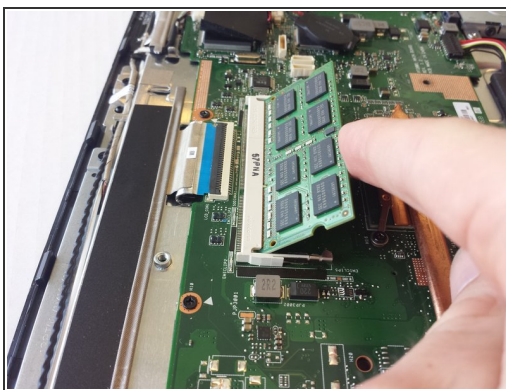
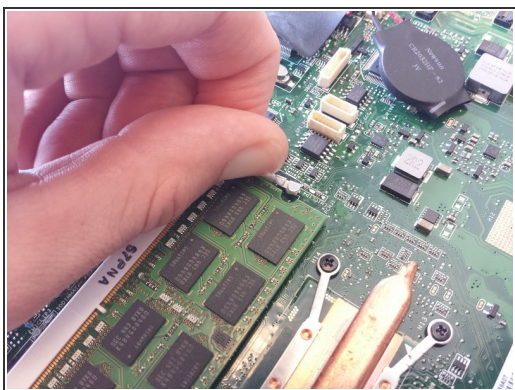
- Disconnect the three cables connecting the back panel ports to the motherboard.
- Flip up the locking latch holding the two ribbon cables with a plastic opening tool and pull the cables out.
- Gently wiggle the third connector out of its socket.

## Step 4 — RAM



- Peel off the tape attaching the metal enclosure to the heat sink.
- Lift the metal enclosure off of the motherboard.

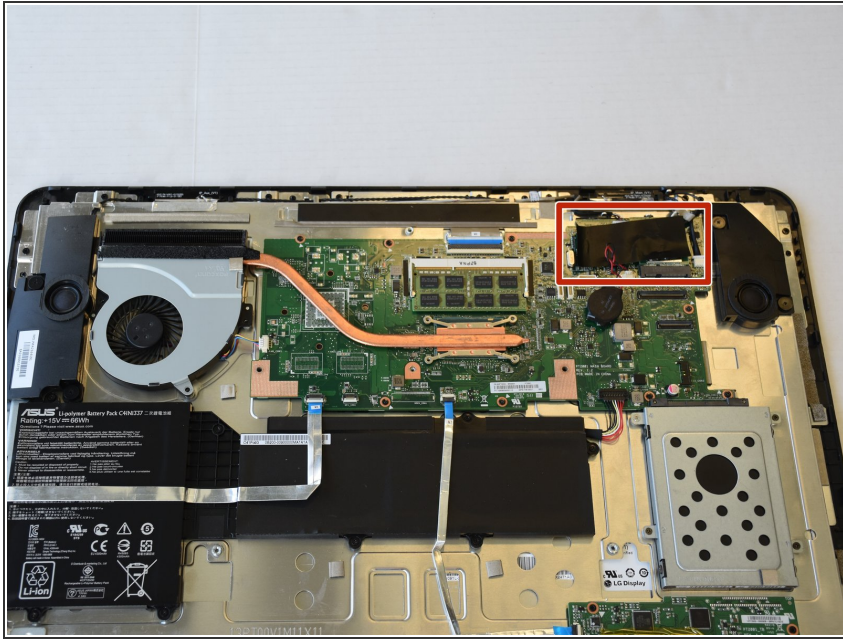
## Step 5



- Pull the jaws of the white plastic frame apart. This will pop the front of the RAM up.
- Gently lift the front edge of the RAM.
- Pull the RAM out and up.



## Step 6 — Wireless Card



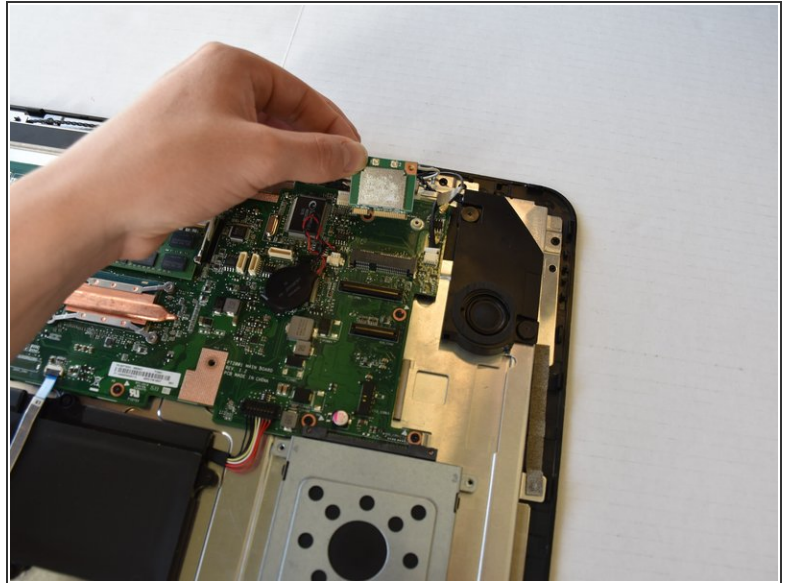
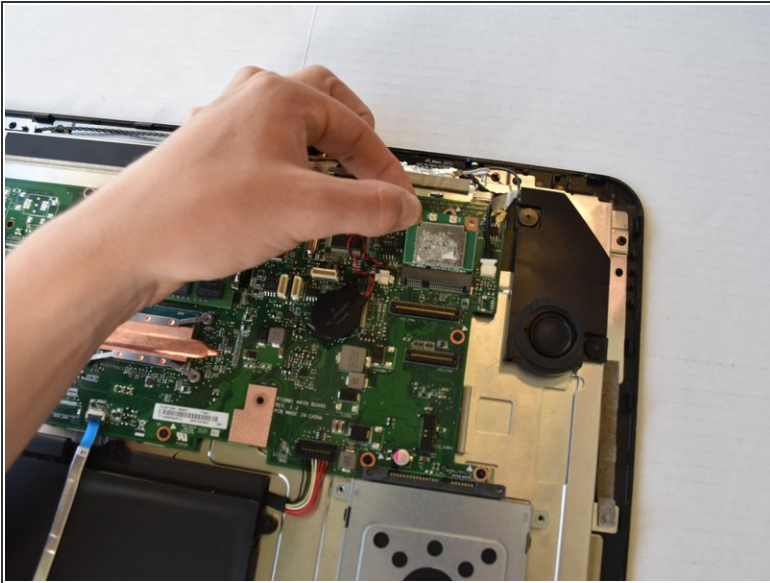
- The wireless card is on the corner of the motherboard next to the speaker. Remove the black tape to reveal the wireless card.

## Step 7



- Remove the 3.5 mm Phillips #1 screw from the wireless card.
- Remove the connectors by pulling straight up on their ends.

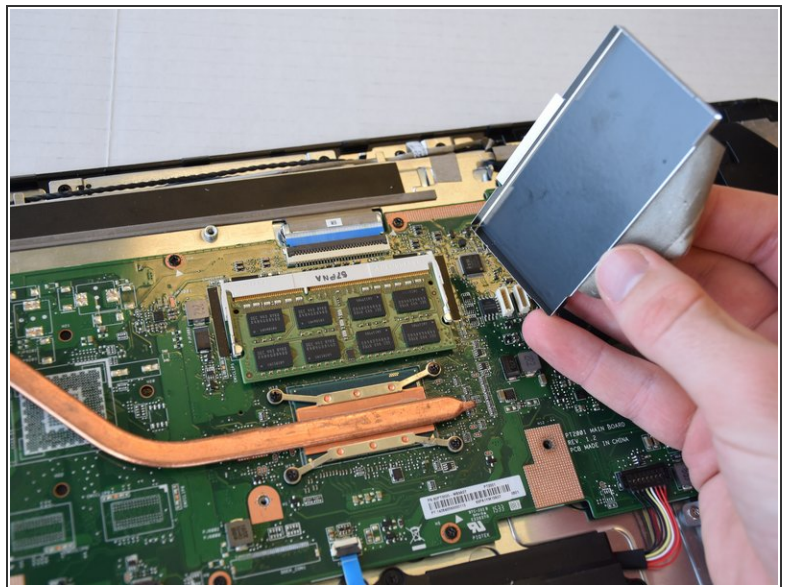
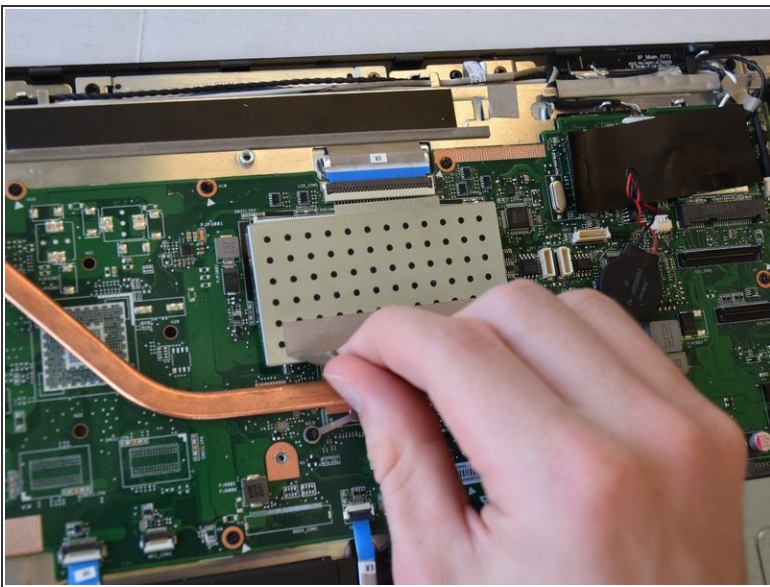
## Step 8



- Remove the wireless card from the casing by lifting up then pulling out.

⚠ The wireless card is fragile. Be careful when pulling it out of the casing.

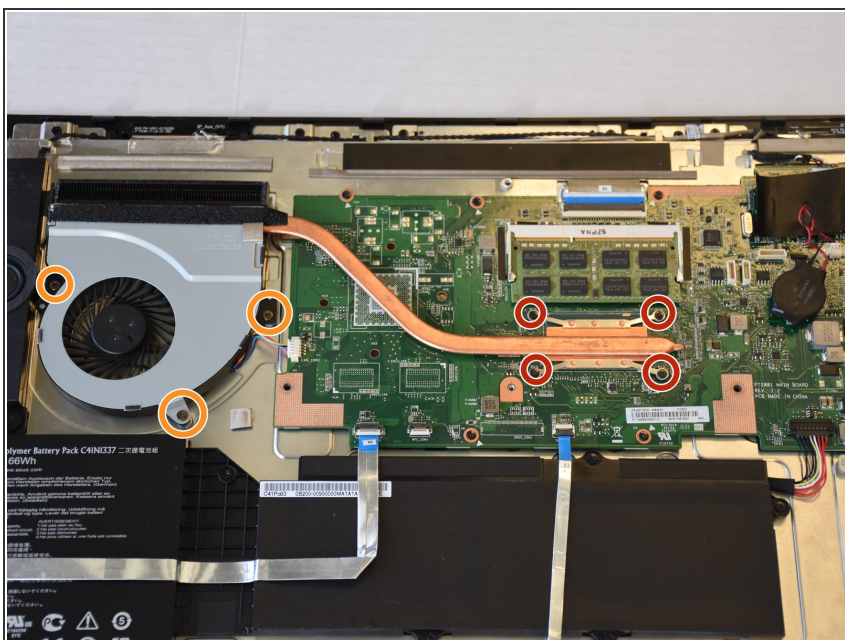
## Step 9 — Heat Sink and Fan



- Remove the tape attached to the heat sink and the metal enclosure.
- Lift the metal enclosure off.

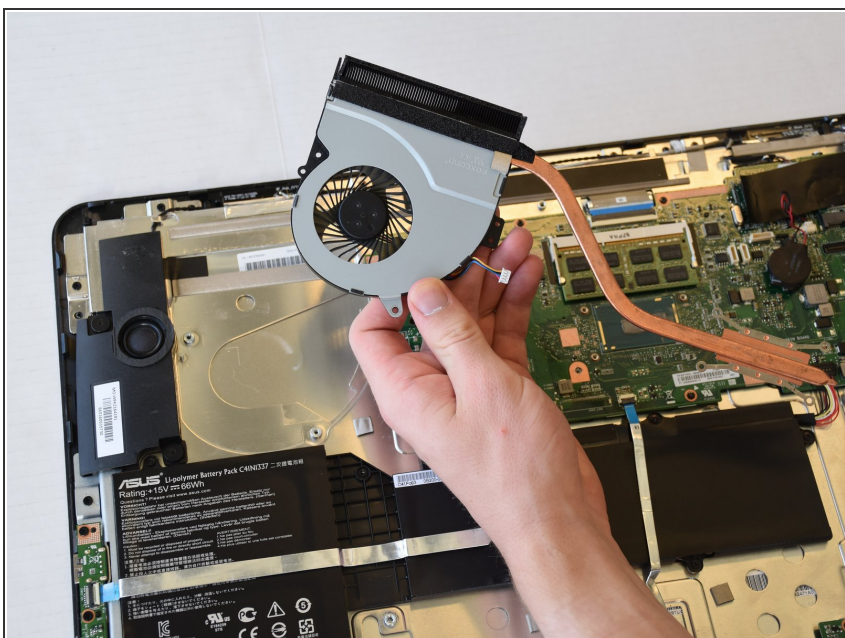


## Step 10



- Remove the four 3.0 mm Phillips #1 screws attaching the heat sink to the motherboard.
- Remove the three 4.0 mm Phillips #1 screws connecting the fan to the device.

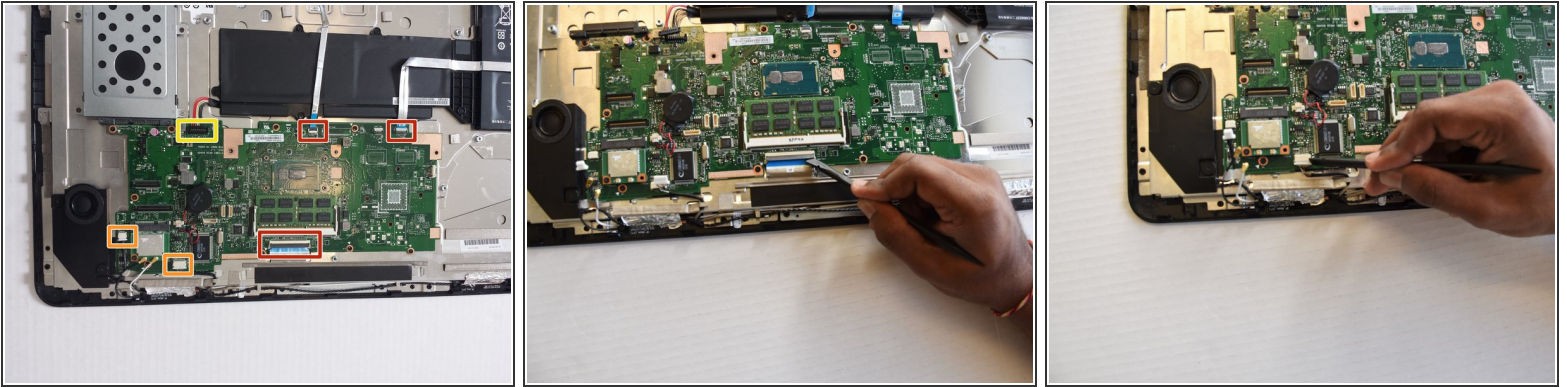
## Step 11



- Lift the heat sink and fan assembly off of the device.
- ☑ When putting the heat sink back into place, reapply thermal paste to the underside of the heat sink where it rests on the motherboard.

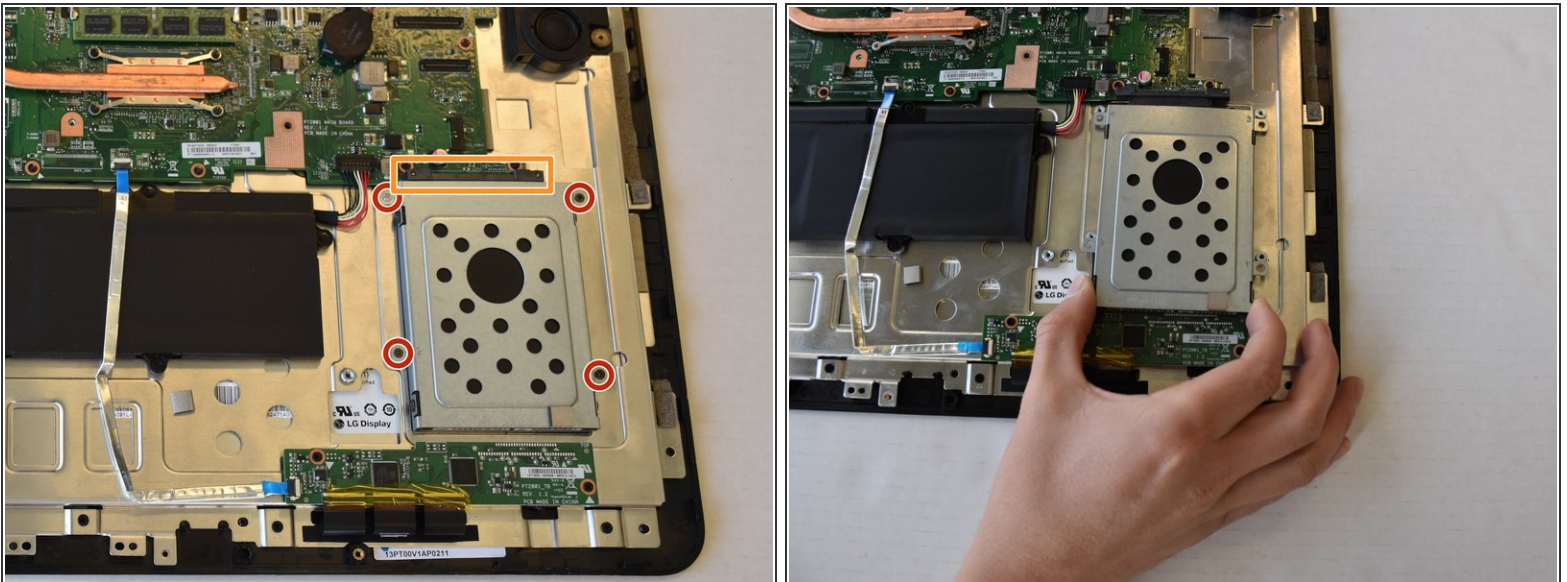


## Step 12 — Motherboard



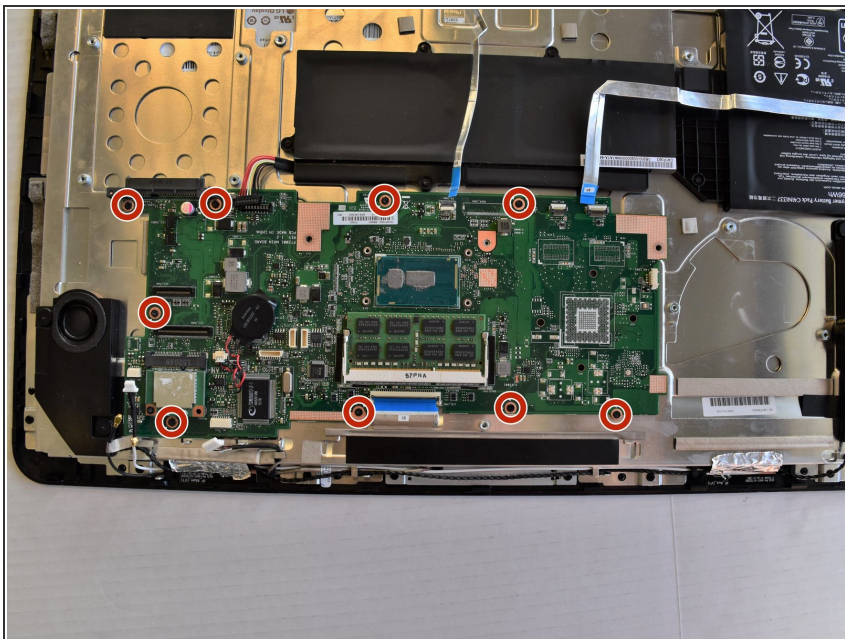
- Flip up the locking mechanism and disconnect the three cables using a nylon spudger.
- Disconnect two more cables by pulling back on the cable using a nylon spudger.
- Disconnect the battery cable by pulling up on the black connector.

## Step 13




- Use a Phillips #1 screwdriver to remove the four-5mm screws that hold the hard drive enclosure to the PC.
- Pull the hard drive away from the motherboard and set it aside.

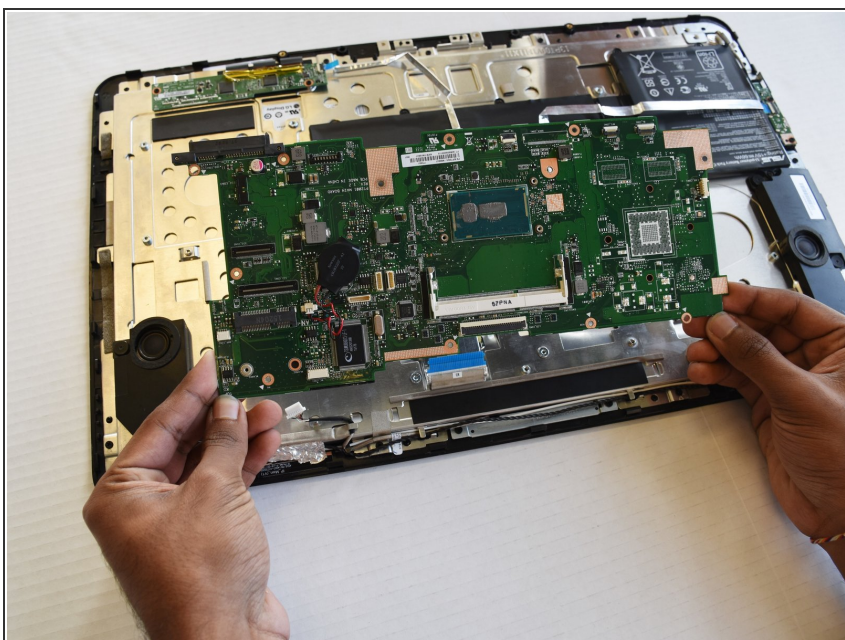
## Step 14




- Use a Phillips #1 screwdriver to remove the nine-3.5mm screws located at the sides of the motherboard.

 The screws are denoted by white triangles.

## Step 15



- Lift the motherboard off the motherboard standoffs.

 Remembering the position of the motherboard standoffs makes it easier to position the motherboard when placing it back in the PC.

To reassemble your device, follow these instructions in reverse order.