



BOSE SoundTouch 30 Power Supply Replacement

How to replace the BOSE SoundTouch 30 power supply.

Written By: Brennen Irey



INTRODUCTION

This guide will show the steps needed to remove the power supply from the BOSE SoundTouch 30.



TOOLS:

- [Phillips #2 Screwdriver](#) (1)
-

Step 1 — Base Plate



- Remove the four 15.5 mm PH2 screws securing the base plate to the device.

Step 2 — Power Supply



- Remove the six 15.5mm PH2 screws securing the grille and rear panel to the device.

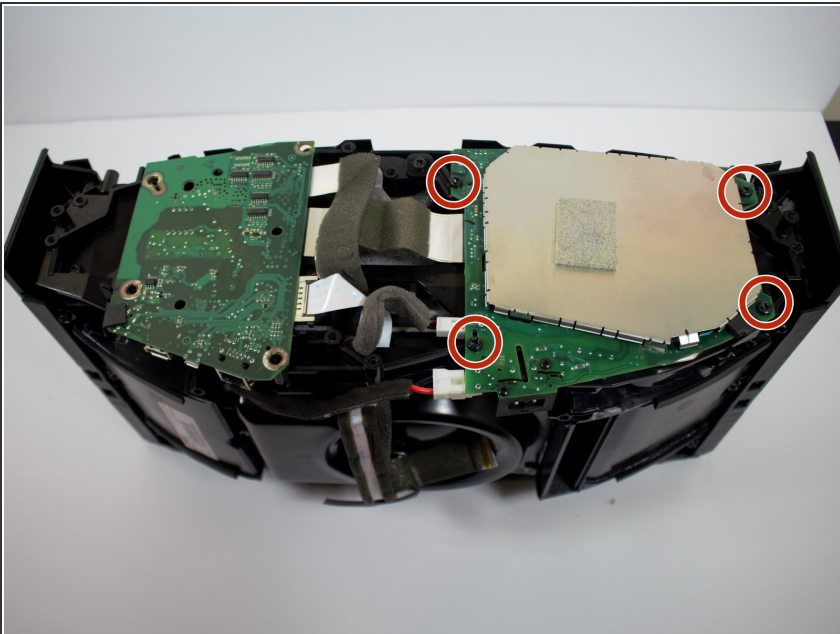
Step 3



- Remove the grille and rear panel by grabbing the corners and pulling upwards and outwards.

⚠ There is a small ribbon cable that connects the display assembly to the body of the device. Make sure to disconnect the cable before pulling the grille all the way off or else the cable could snap.

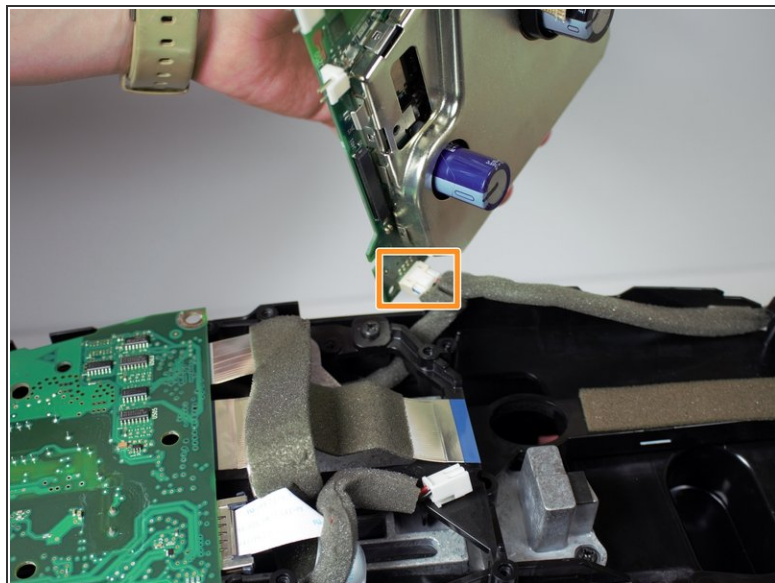
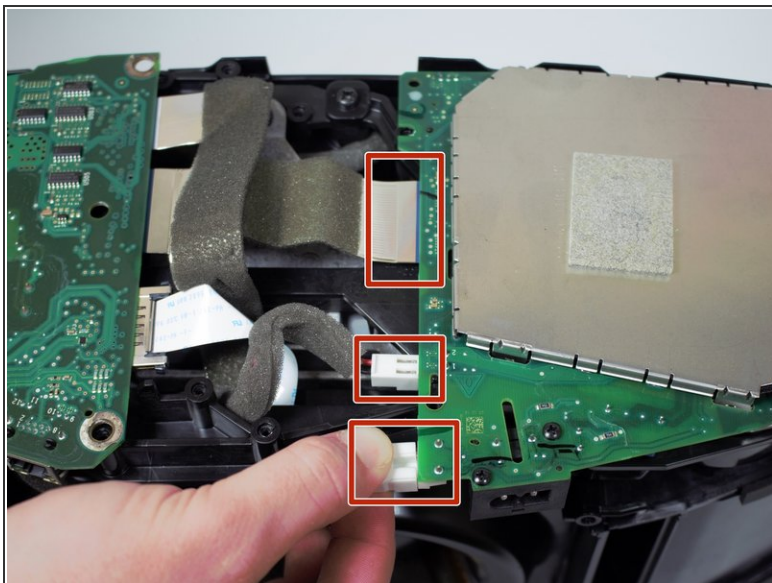
Step 4



- Remove all four 15.5 mm PH2 screws holding the power supply down.

ⓘ The power supply is identified by a green board with a large metal covering.

Step 5



- Disconnect the three cables from the power supply by squeezing the white tabs if present and gently pulling.
- Pick up the power supply and remove the fourth cable from the underside of the power supply.
- Remove the power supply.

To reassemble your device, follow these instructions in reverse order.