



Samsung Galaxy S7 Active Motherboard Replacement

This guide will teach you how to remove and...

Written By: Joe De Leone



INTRODUCTION

This guide will teach you how to remove and replace the motherboard in the Samsung Galaxy S7 Active.

TOOLS:

Hair Dryer (1)

Phillips #000 Screwdriver (1)

Metal Spudger (1)


Tweezers (1)

Heat Gun (1)

Step 1 — Samsung Galaxy S7 Active Disassembly



- Melt the adhesive on the screen by applying a blow dryer directly on the screen.

 Your phone is hot, please do not touch it with your bare hand.

Step 2



- Wedge the metal spudger in between the screen and the frame to begin separating them.
- ① It would be easier to separate the screen from the sealing adhesive on the frame if you with more than one metal spudger.
- ① Your phone might no longer be watertight after you reassemble it.

Step 3



- Slide the metal spudger around the phone at least once.
- ① It would be easier to slide your metal spudger if you apply the blow dryer to where you are currently sliding.

Step 4



- Lift the screen up with your hands.

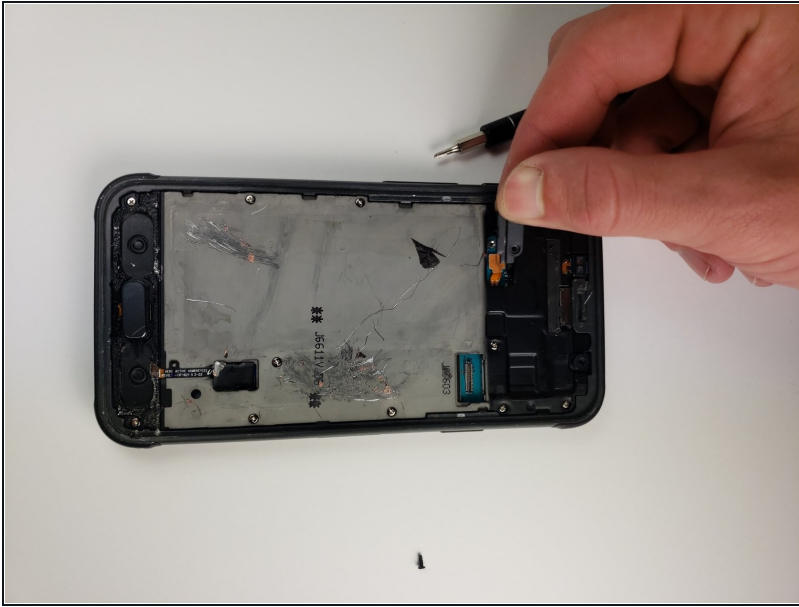
⚠ Please wash your hands thoroughly with hot water and soap after you finish.

Step 5 — Battery



- Use a Phillips #000 screwdriver to remove a single screw.

Step 6



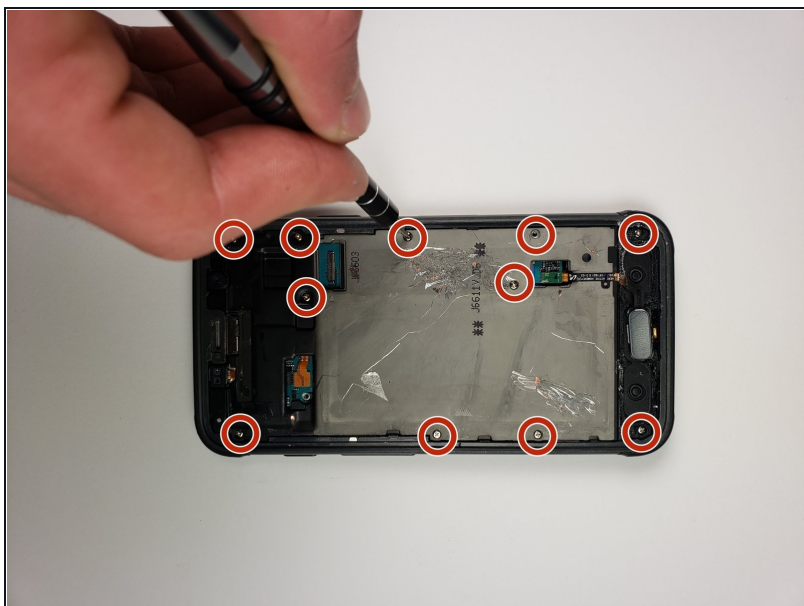
- Use [tweezers](#) to remove the small plastic cover you just unscrewed.

Step 7



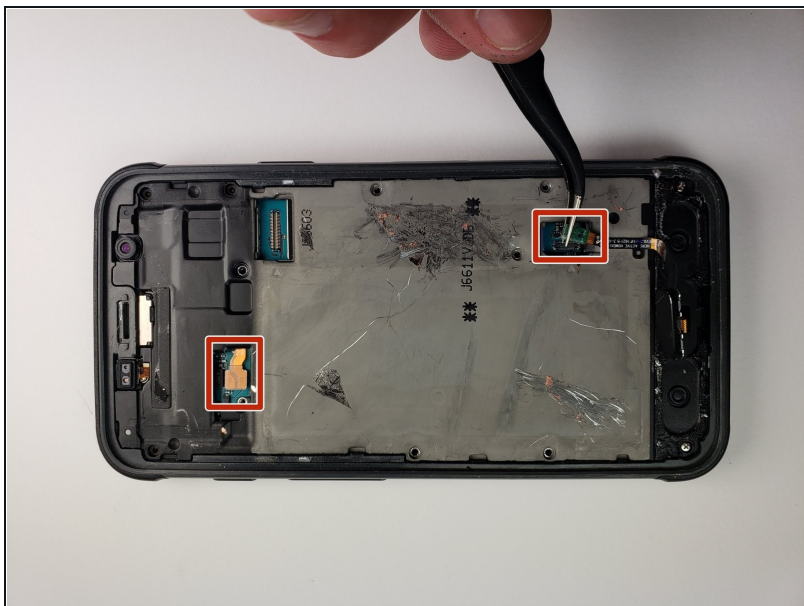
- Use tweezers to remove the other small plastic cover.

Step 8



- Use a Phillips head #000 to take out the eleven screws marked in the photo.

Step 9



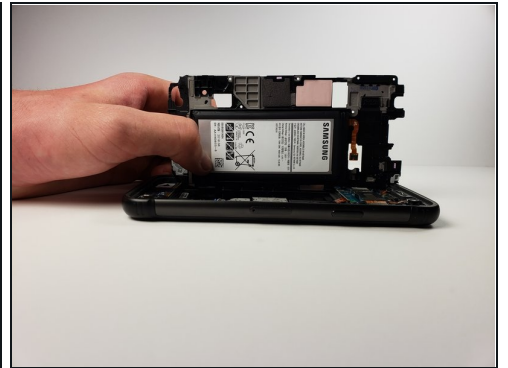
- Use tweezers to disconnect the marked pieces from the motherboard.

Step 10



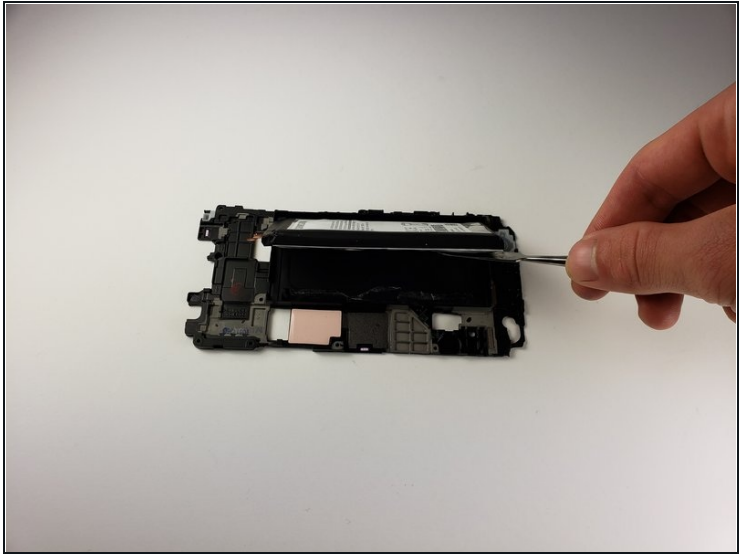
- Use tweezers to take out the middle button and its connection to the motherboard.

Step 11



- Use a metal spudger to pull the mid frame and battery off of the motherboard.

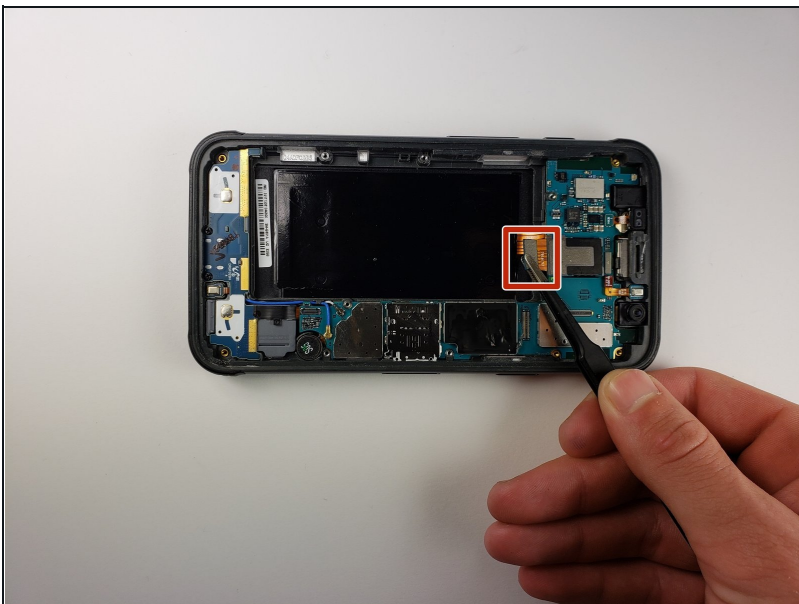
Step 12



- Use a spudger to remove the battery from the midframe.

☑ To install a new battery and adhesive, [follow this guide](#).

Step 13 — Rear Camera



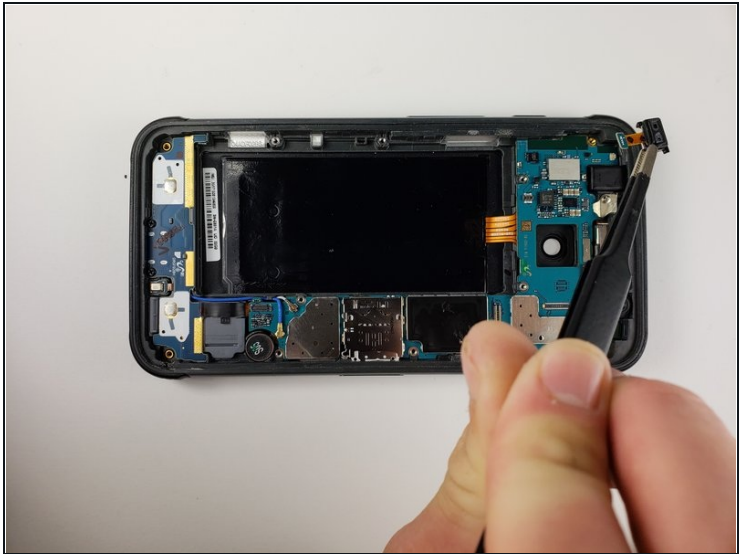
- Use [tweezers](#) to disconnect the front camera from the battery.
- ⓘ The connector should unsnap similar to a lego piece.

Step 14 — Motherboard



- Use a Phillips 000 screwdriver to remove the screw covering the proximity sensor.

Step 15



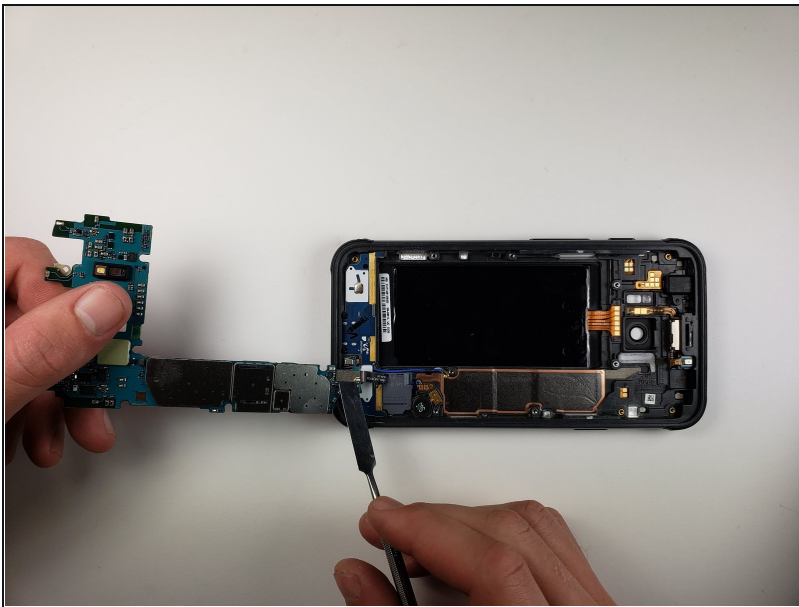
- Use [tweezers](#) to remove the proximity sensor.
- Set this aside for now.

Step 16



- Use tweezers to disconnect the front mic and the two cables that have been marked in the photo.

Step 17



- Use your hands and a metal spudger to lift the motherboard out of the phone.
- ⓘ Be gentle, as there is still a connection on the underside of the motherboard.
- Use a metal spudger to remove this connection.

To reassemble your device, follow these instructions in reverse order.