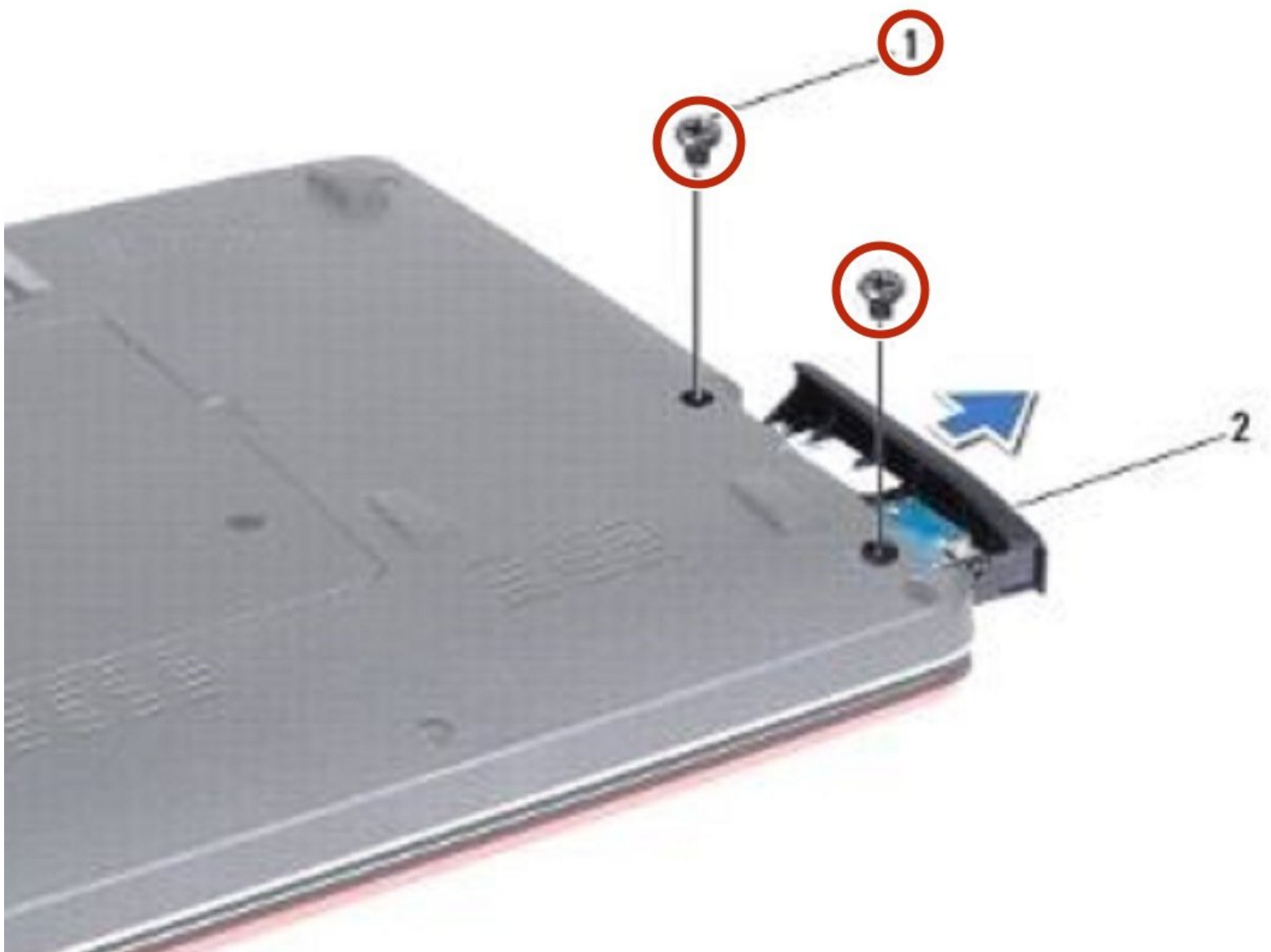




Dell Inspiron 1440 Hard Drive Replacement

Written By: Terrence15



INTRODUCTION

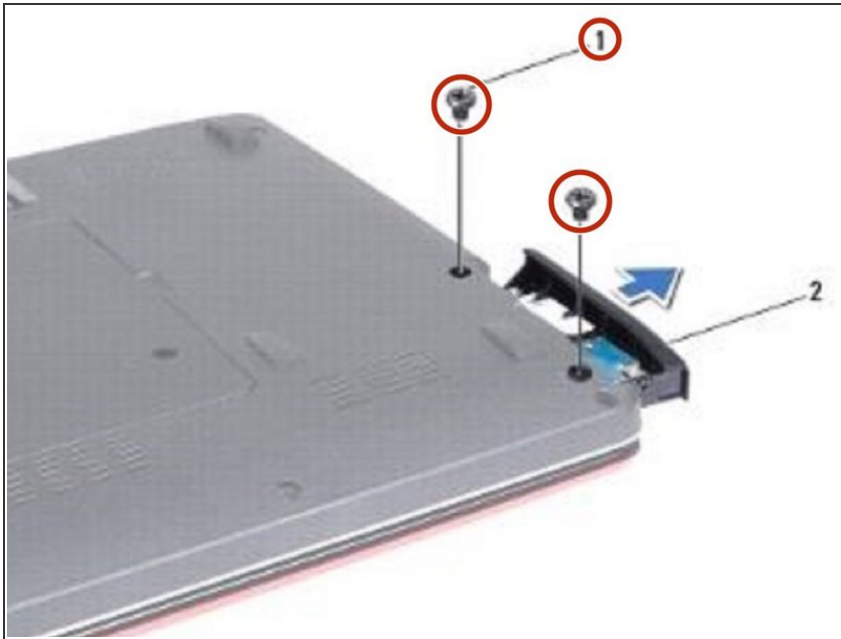
In this guide, we will show you how to remove and replace the Hard Drive.



TOOLS:

- [Phillips #0 Screwdriver](#) (1)
-

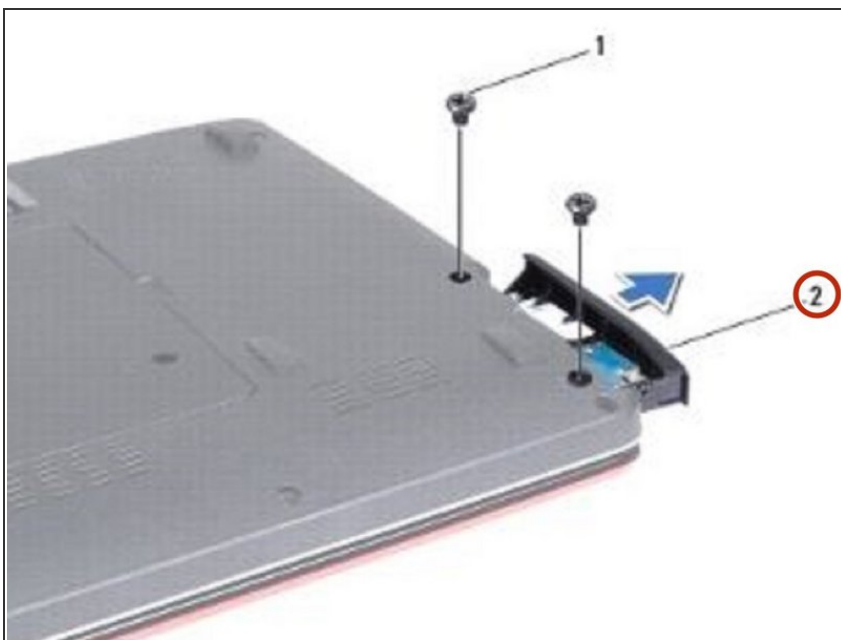
Step 1 — Remove the Screws



⚠ WARNING: Before working inside your computer, read the safety information that shipped with your computer. Follow the procedures in [Before You Begin](#).

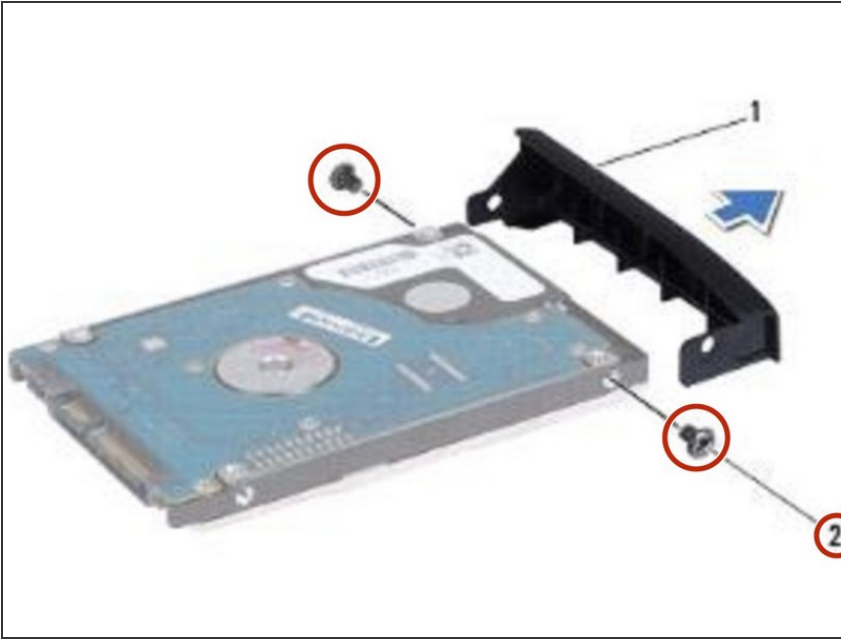
- Remove the two screws that secure the hard drive assembly to the computer base.

Step 2 — Sliding the Hard Drive Assembly



- Slide the hard drive assembly out of the hard drive compartment.

Step 3 — Remove the Screws



- Remove the two screws that secure the hard drive bezel to the hard drive.

Step 4 — Remove the Hard Drive



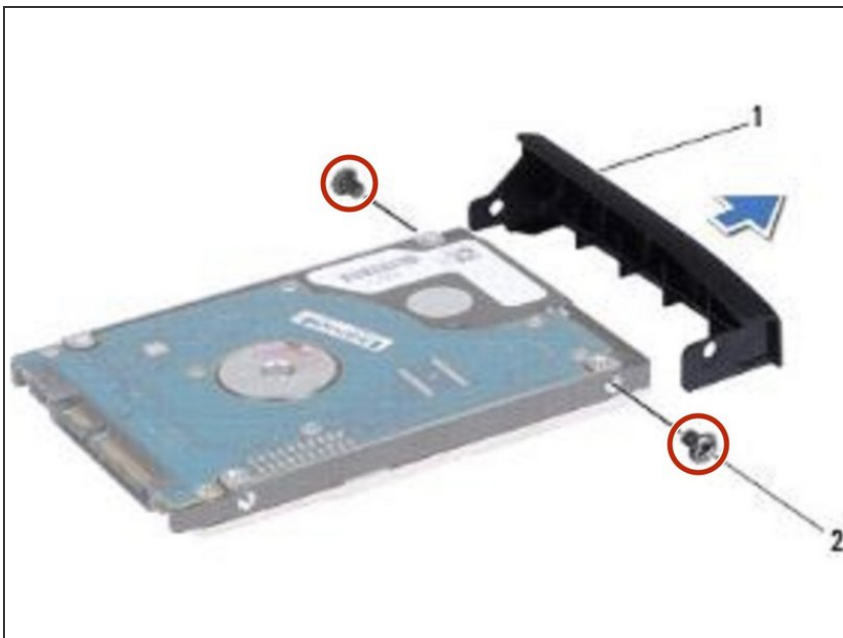
- Remove the hard drive.

Step 5 — Align the Screw Holes



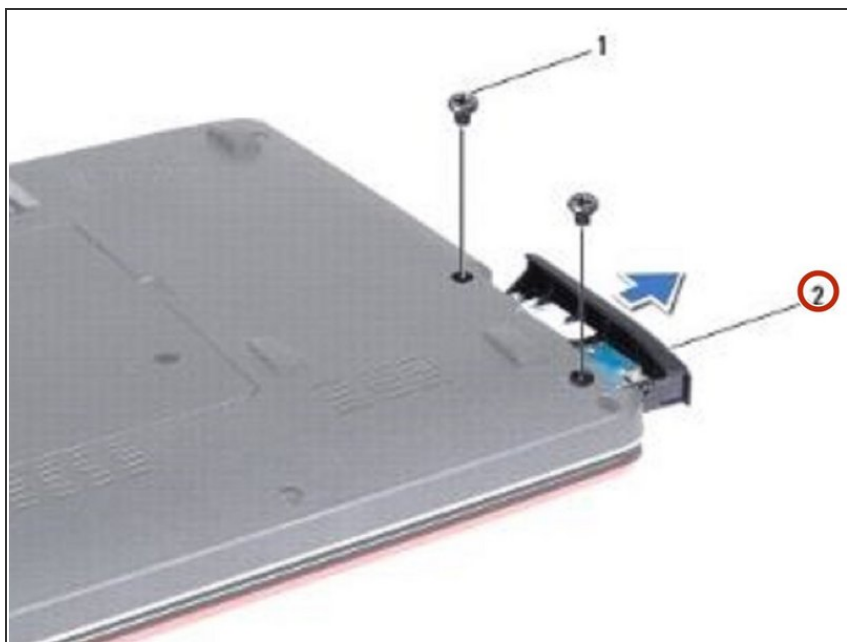
- Align the screw holes on the hard drive bezel with the holes on the hard drive.

Step 6 — Replace the Screws



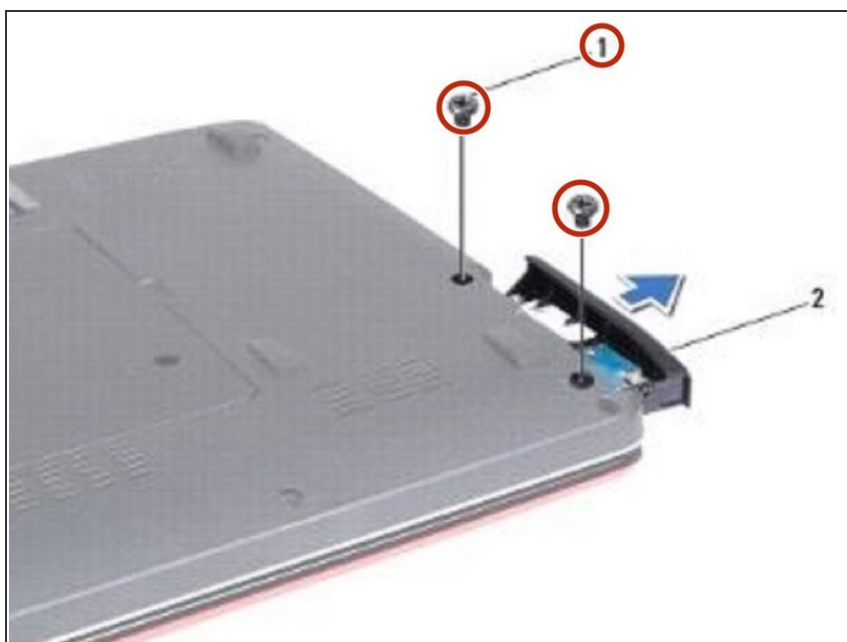
- Replace the two screws that secure the hard drive bezel to the hard drive.

Step 7 — Sliding the Hard Drive Assembly



- Slide the hard drive assembly into the hard drive compartment until it is fully seated.

Step 8 — Replace the Screws



- Replace the two screws that secure the hard drive assembly to the computer base.