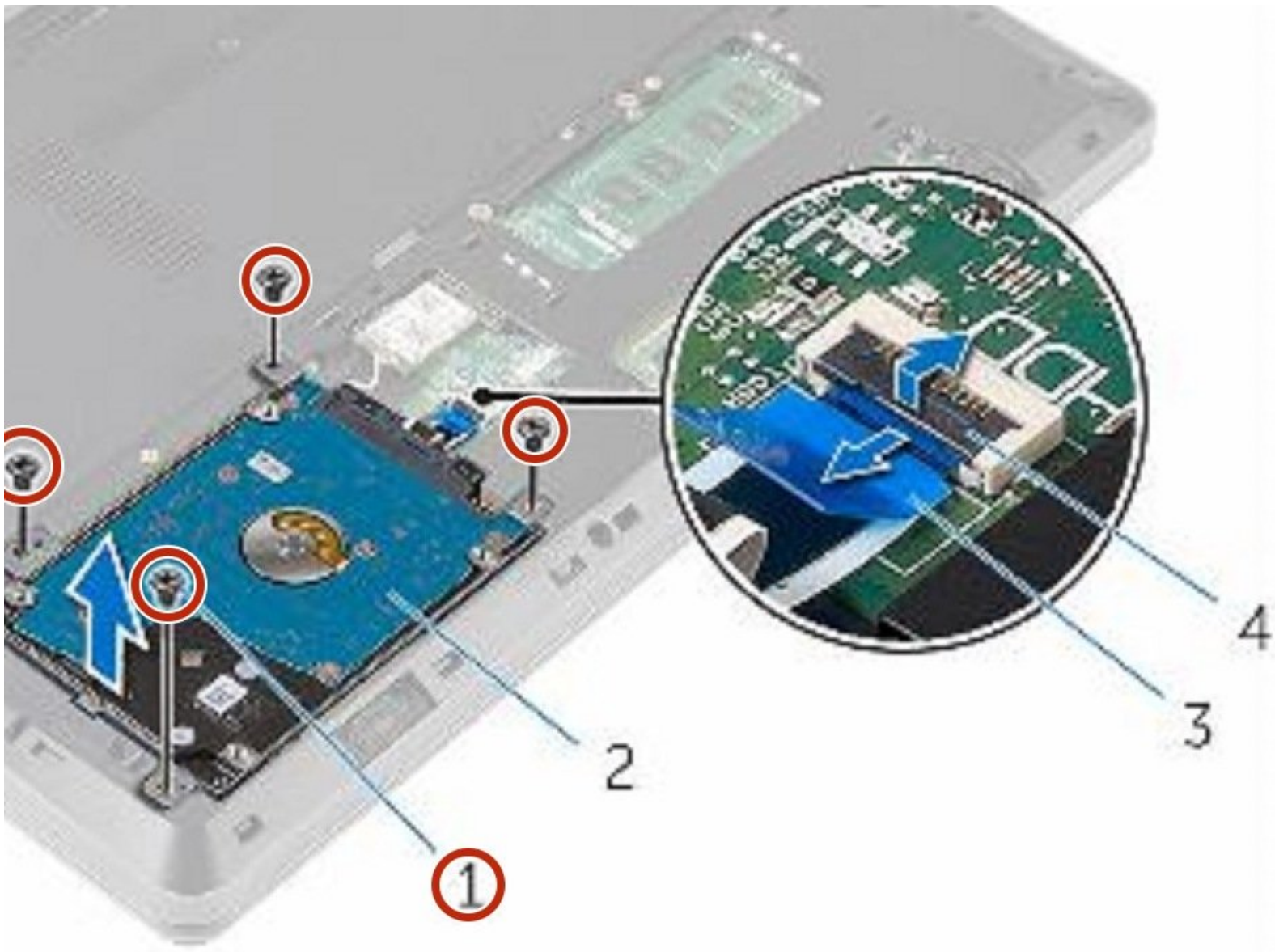




Dell Inspiron 14 3459 Hard Drive Replacement

Written By: Terrence15



INTRODUCTION

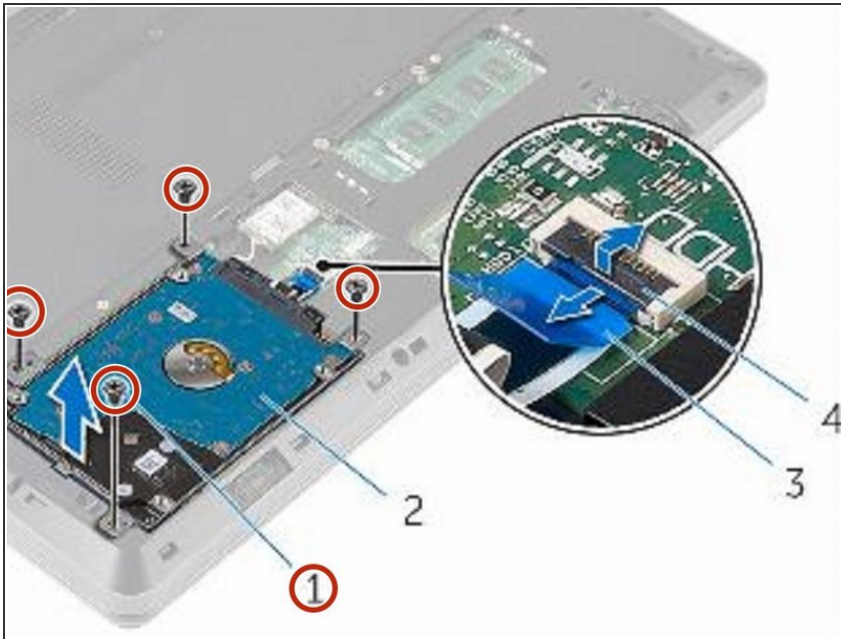
In this guide, we will show you how to remove and replace the Hard Drive.



TOOLS:

- [Phillips #0 Screwdriver](#) (1)
-

Step 1 — Remove the Screws

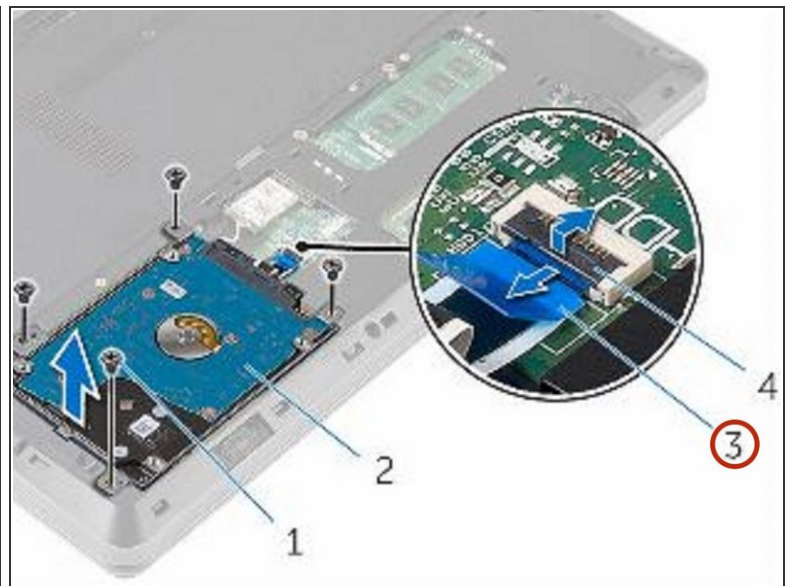
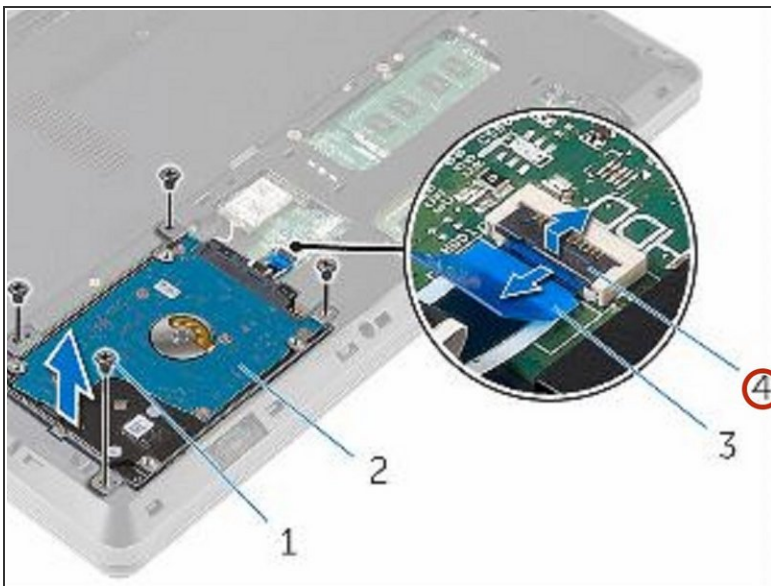


⚠ WARNING: Before working inside your computer, read the safety information that shipped with your computer and follow the steps in [Before Working Inside Your Computer](#). After working inside your computer, follow the instructions in [After Working Inside Your Computer](#).

⚠ CAUTION: Hard drives are fragile. Exercise care when handling the hard drive.

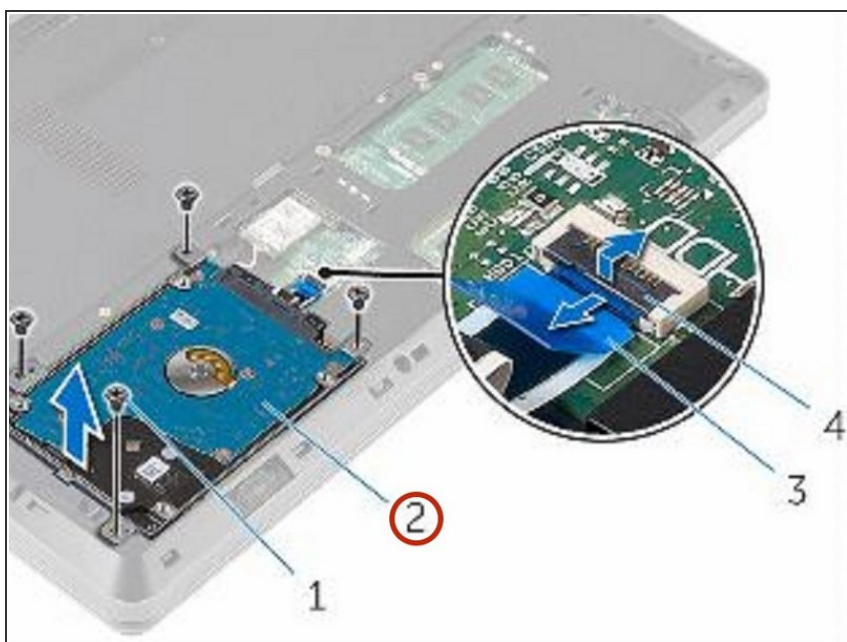
- Remove the screws that secure the hard-drive assembly to the computer base.

Step 2 — Disconnect the Hard Drive Cable



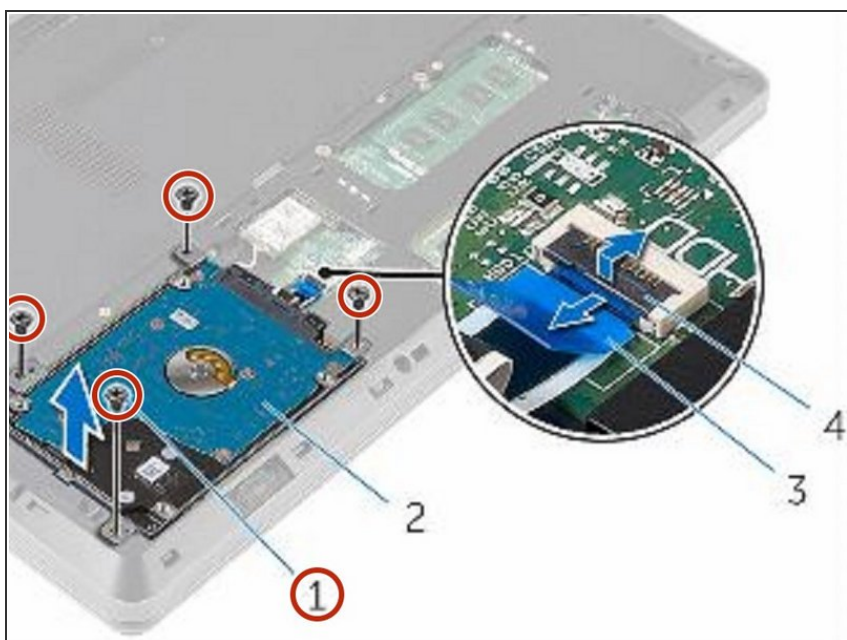
- Open the latch and disconnect the hard-drive cable from the system board.

Step 3 — Lifting the Hard-Drive Assembly



- Lift the hard-drive assembly off the computer base.

Step 4 — Remove the Screws



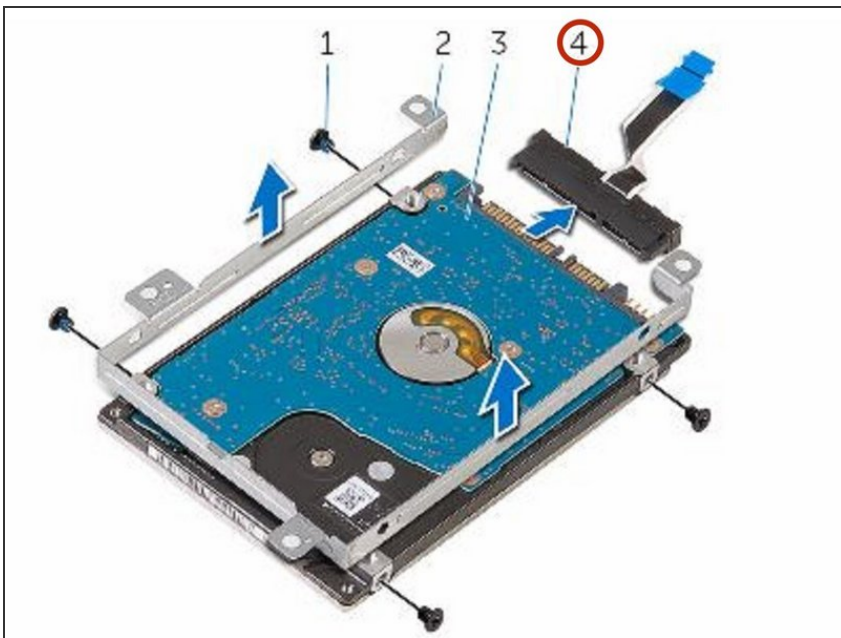
- Remove the screws that secure the hard-drive bracket to the hard drive.

Step 5 — Lifting the Hard-Drive Bracket



- Lift the hard-drive bracket off the hard drive.

Step 6 — Disconnecting the Interposer



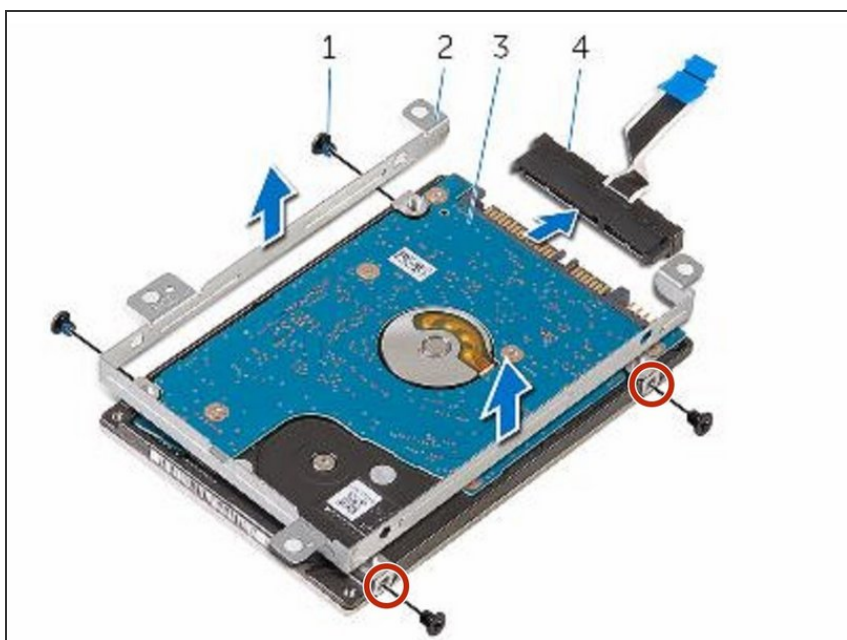
- Disconnect the interposer from the hard drive.

Step 7 — Connecting the Interposer



- Connect the interposer to the **NEW** hard drive.

Step 8 — Align the Screw Holes



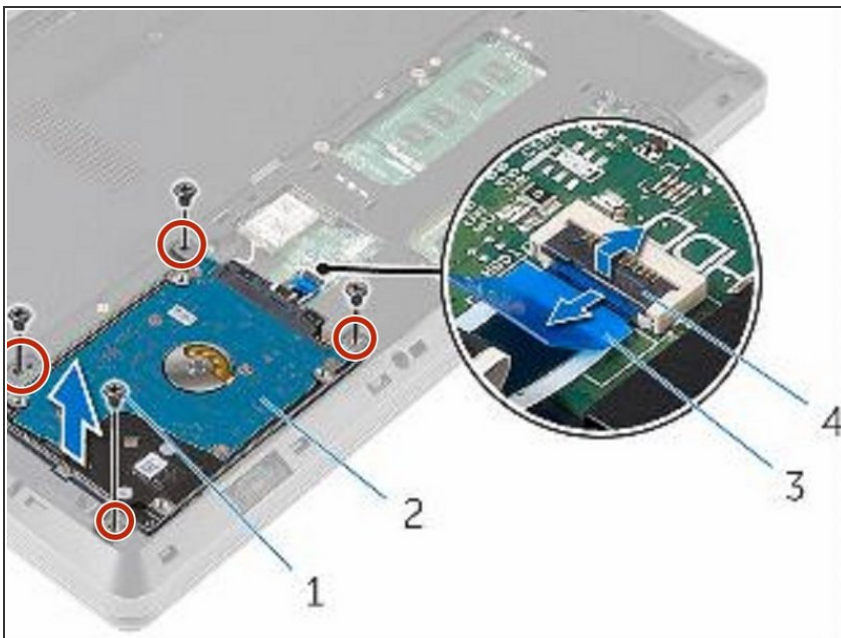
- Align the screw holes on the hard-drive bracket with the screw holes on the hard drive.

Step 9 — Replace the Screws



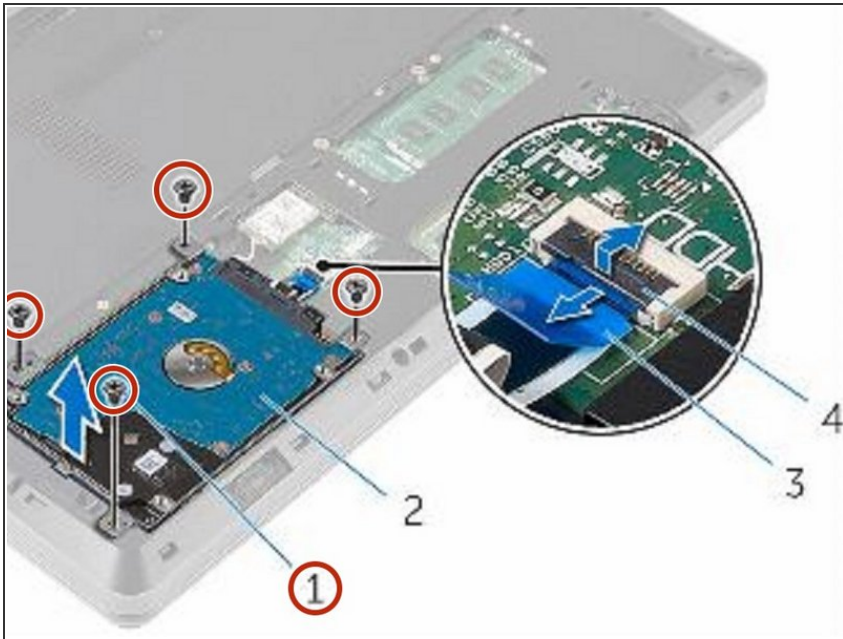
- Replace the screws that secure the hard-drive bracket to the hard drive.

Step 10 — Align the Screw Holes



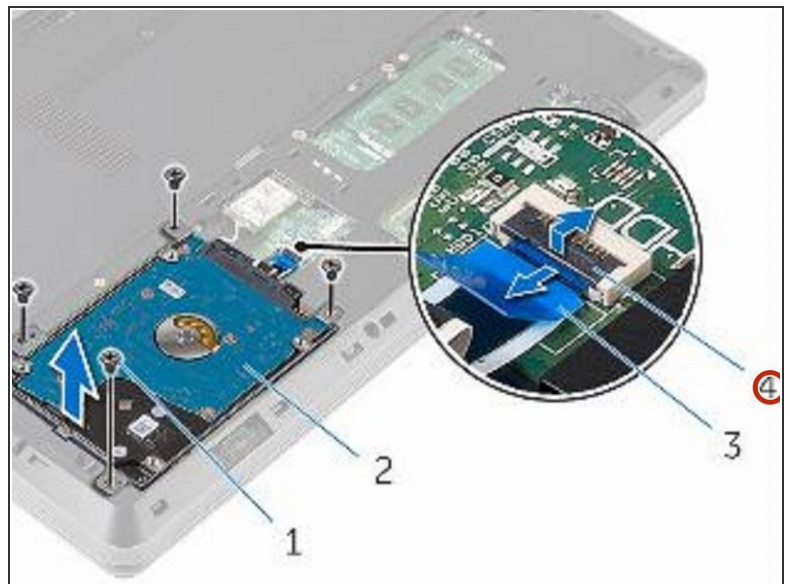
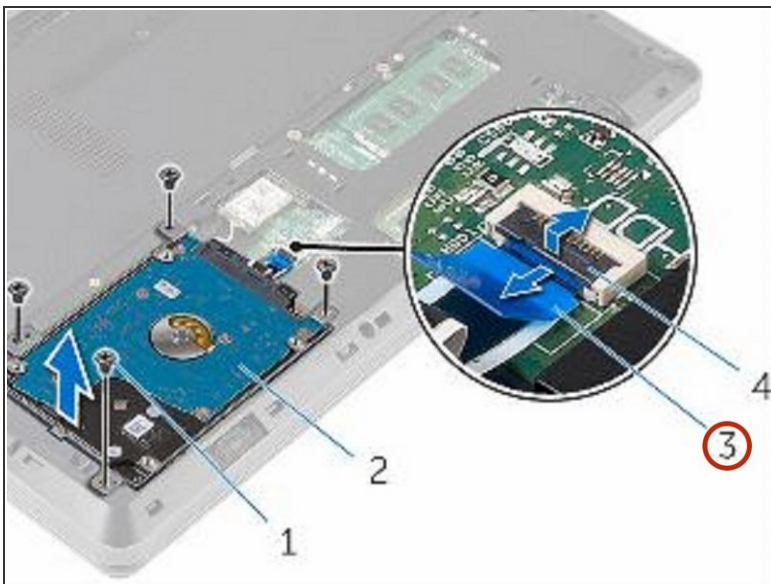
- Align the screw holes on the hard-drive assembly with the screw holes on the computer base.

Step 11 — Replace the Screws



- Replace the screws that secure the hard-drive assembly to the computer base.

Step 12 — Securing the Hard Drive Cable



- Slide the hard-drive cable into the system board and close the latch to secure the cable.