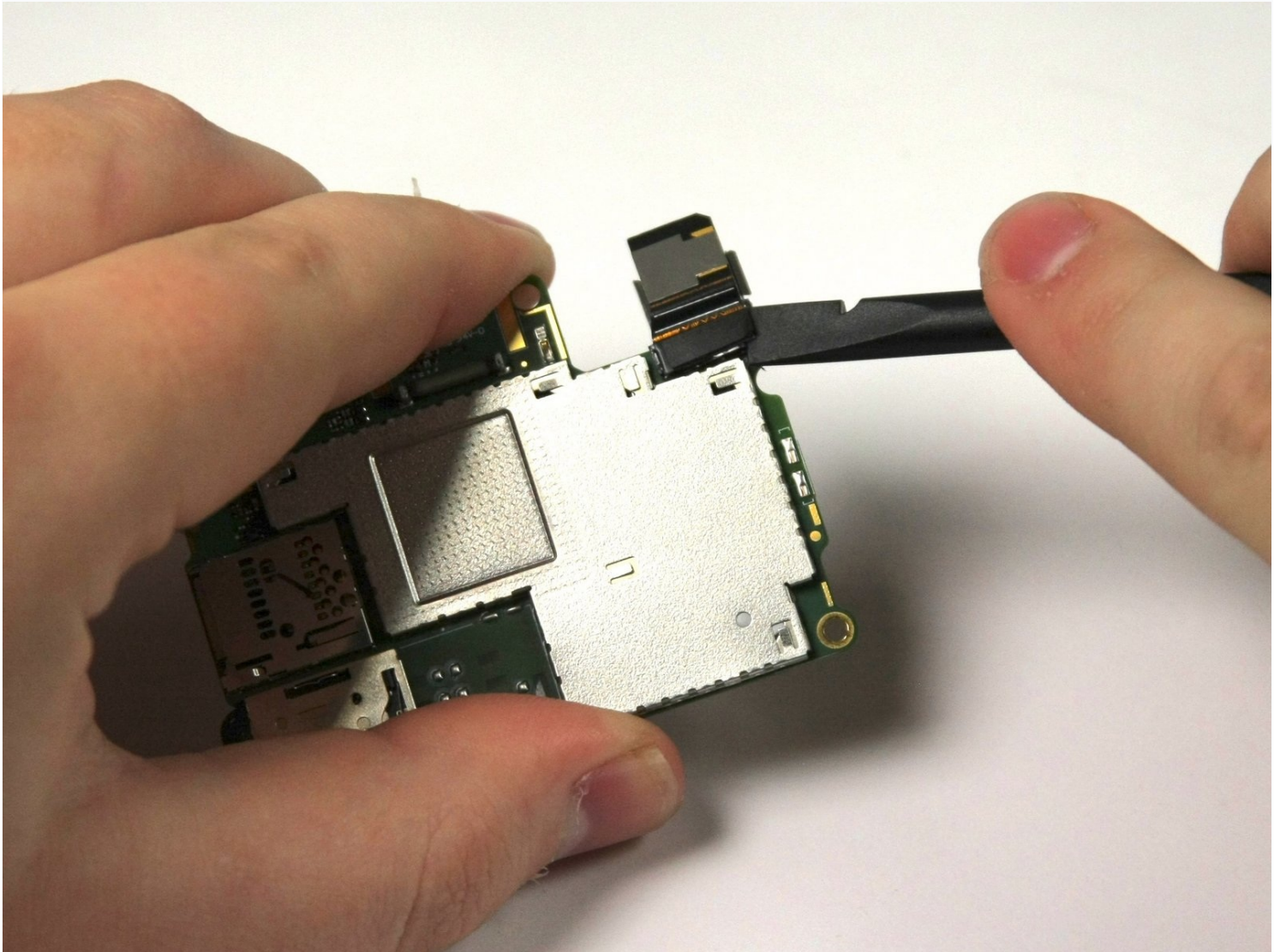




Sony Xperia XA Back Camera Replacement

You will need to use a source of heat. You may...

Written By: Theresa Wilcoski



INTRODUCTION

You will need to use a source of heat. You may need to buy adhesive for the reassembly. Make sure the phone is completely powered off before opening the device.

TOOLS:

Phillips #00 Screwdriver (1)

Tweezers (1)

Spudger (1)

Heat Gun (1)

Metal Spudger (1)

Suction Handle (1)

iFixit Opening Tool (1)

Step 1 — Back Cover



- Apply heat on the back surface of the phone.

- ⓘ Continue to heat the device as needed throughout the replacement process.

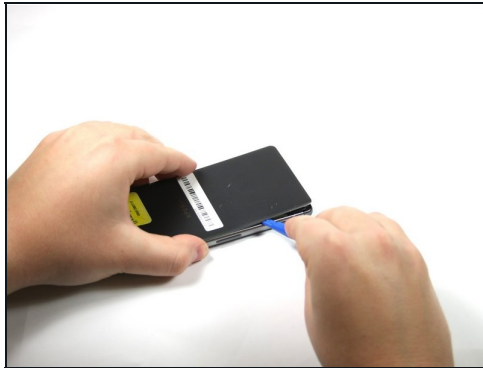
 The device can get very hot, so be careful when handling it.

Step 2



- Stick the small suction cup on the bottom half of the back surface of the phone.

Step 3



- With the bottom of the device facing you, lift up on the suction cup handle.
- Use the plastic opening tool around all sides to pry off the back cover.

Step 4



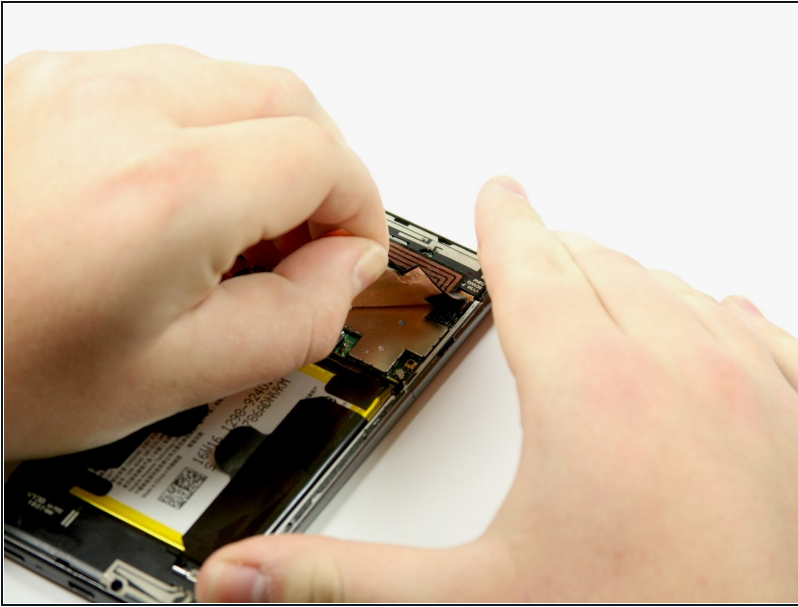
- Pull the back of the phone case away from the device.
- ① You will hear popping sounds of glue being ripped from the phone.
- ① You will hear the sound of the back unlatching from the device.
- ✦ You will need to apply adhesive or glue along the device to have maximum seal in reassembly.
- ① RAF antenna may be attached to the back cover upon removal.

Step 5



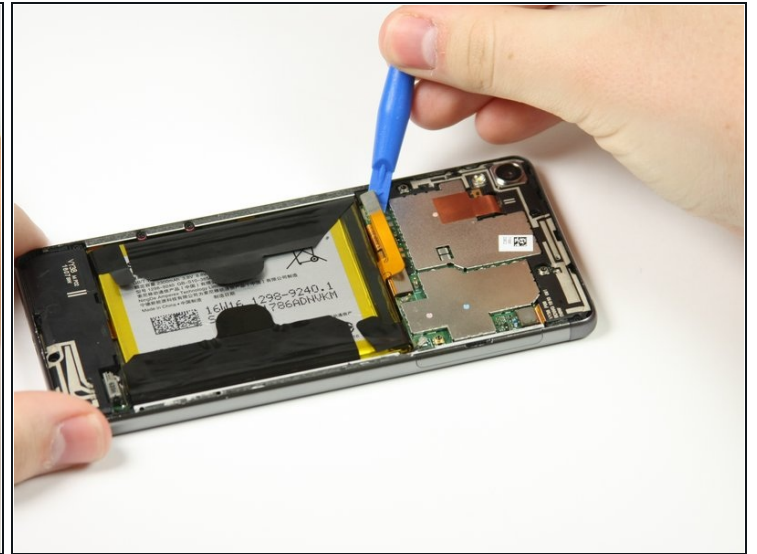
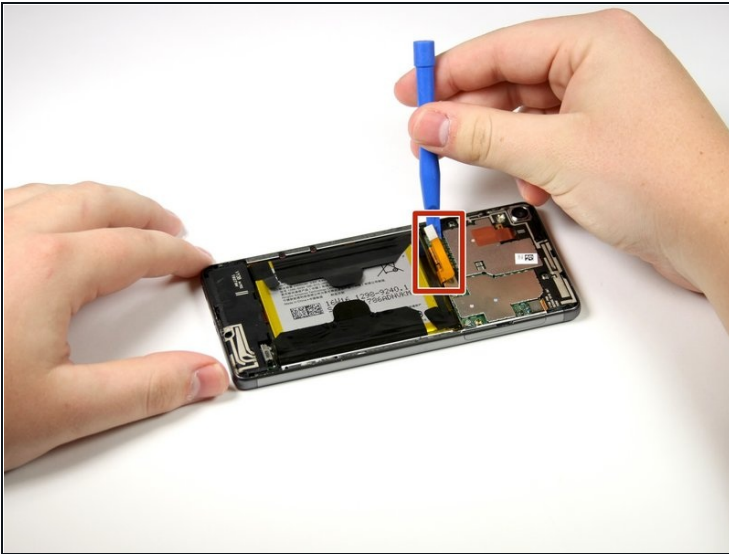
- Apply heat to the copper RAF antenna.
- ① This step and the following step only apply if the RAF antenna does not come off when taking the back cover off.

Step 6



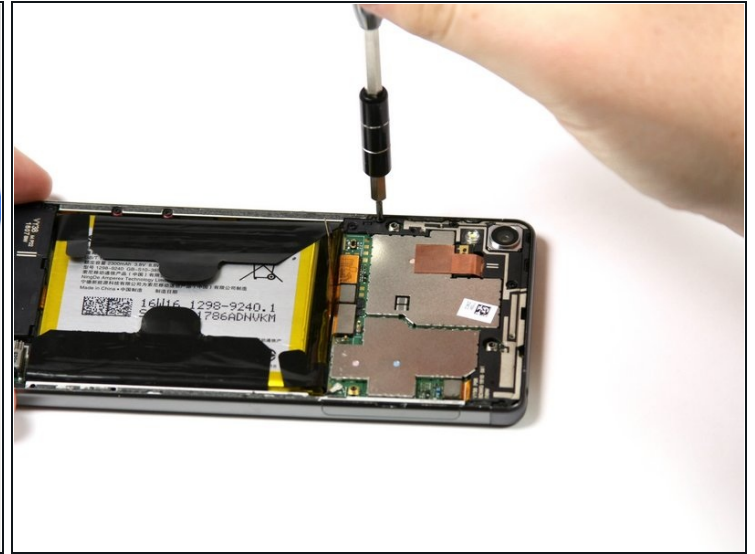
- Peel back the RAF antenna.

Step 7 — Motherboard



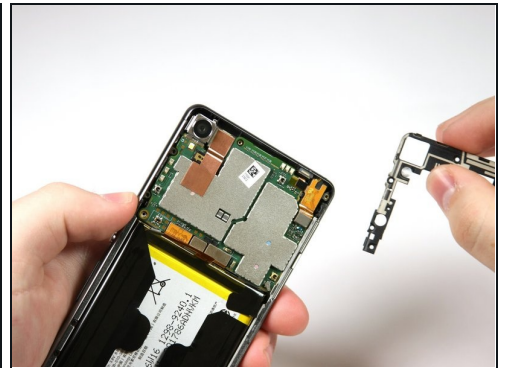
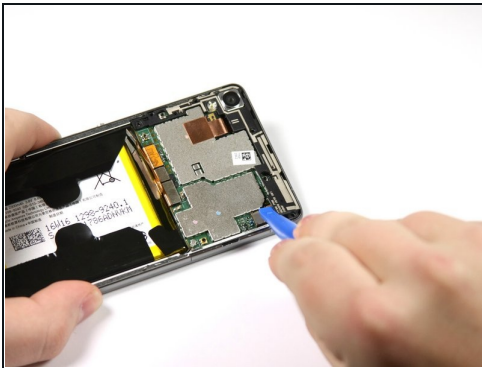
- Pry up the copper connector next to the battery with the plastic opening tool.

Step 8



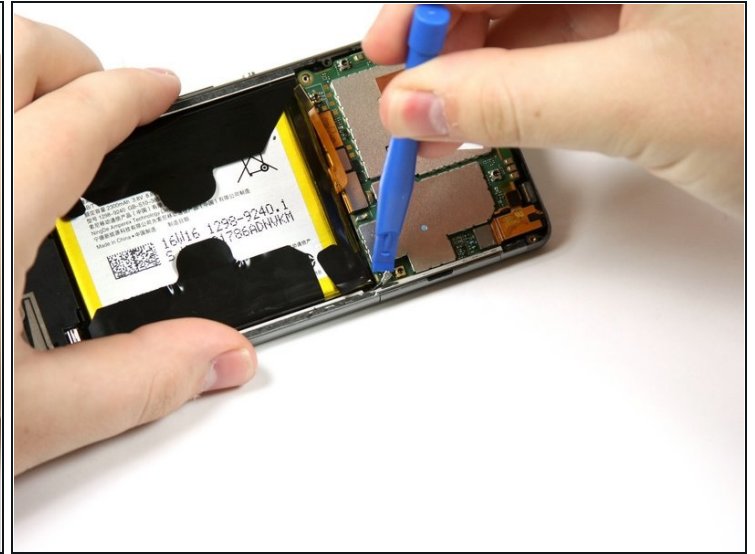
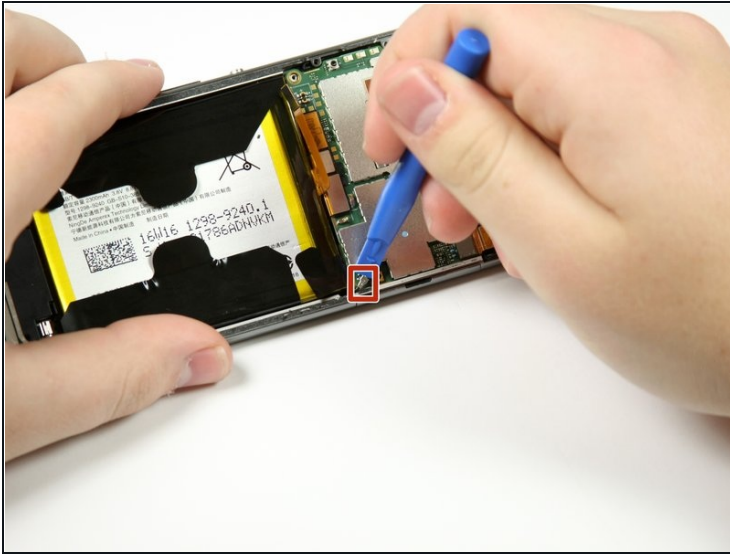
- Remove the five black 4mm screws with a Phillips #00 Screwdriver.

Step 9



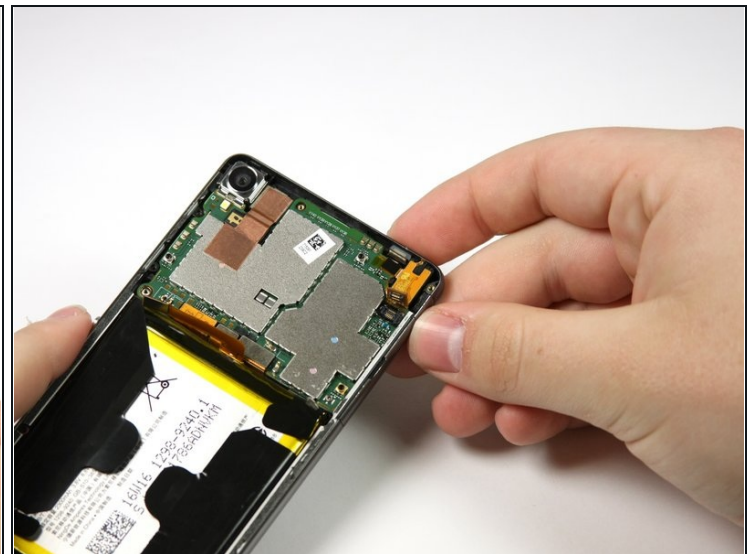
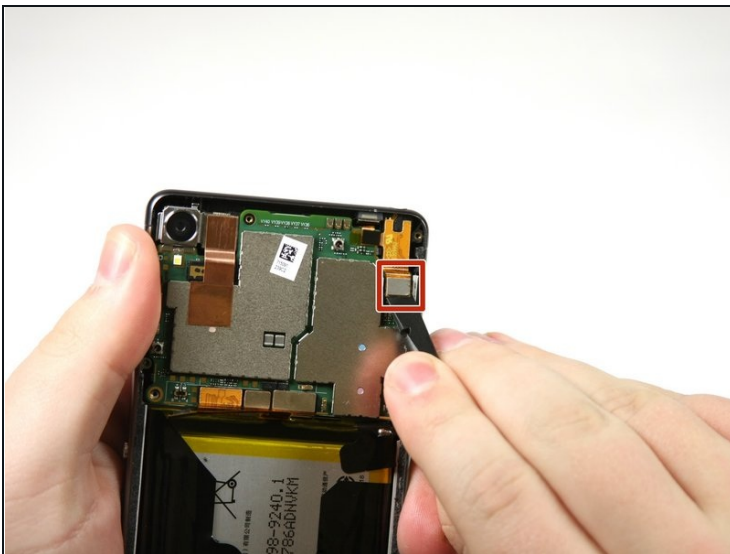
- Pry up the black camera case with the plastic opening tool and then remove the case.

Step 10



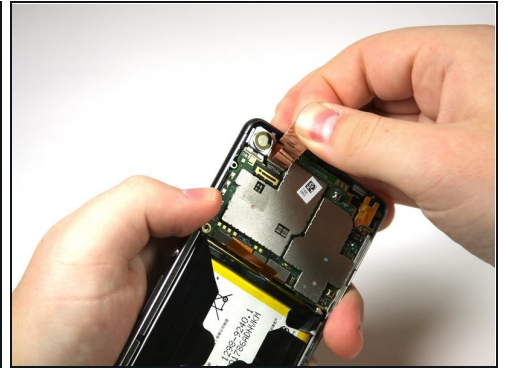
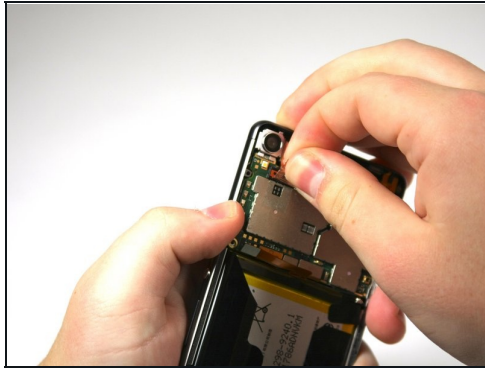
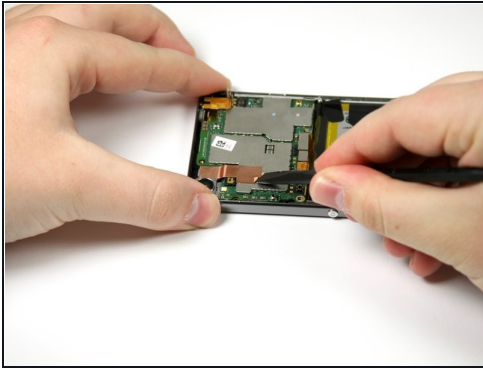
- Pop off the small connector on the right side of the motherboard with the plastic opening tool.

Step 11



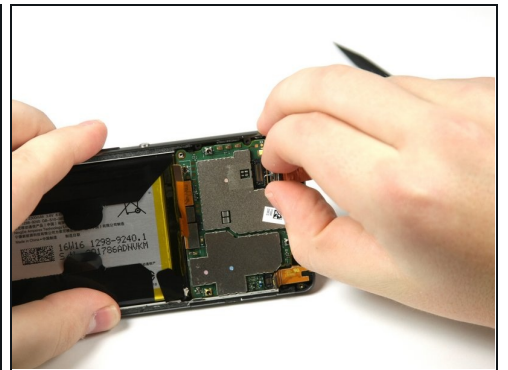
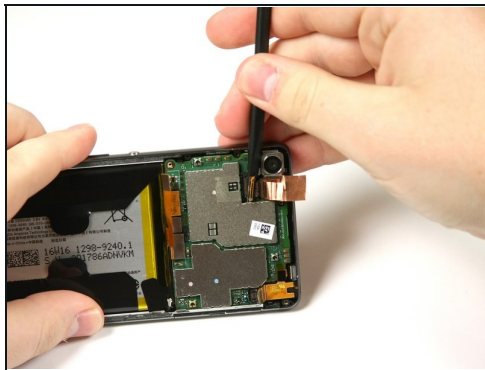
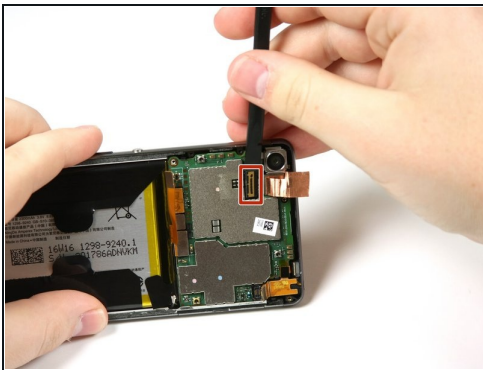
- Use the spudger to take off the connector in the top right of the motherboard.

Step 12



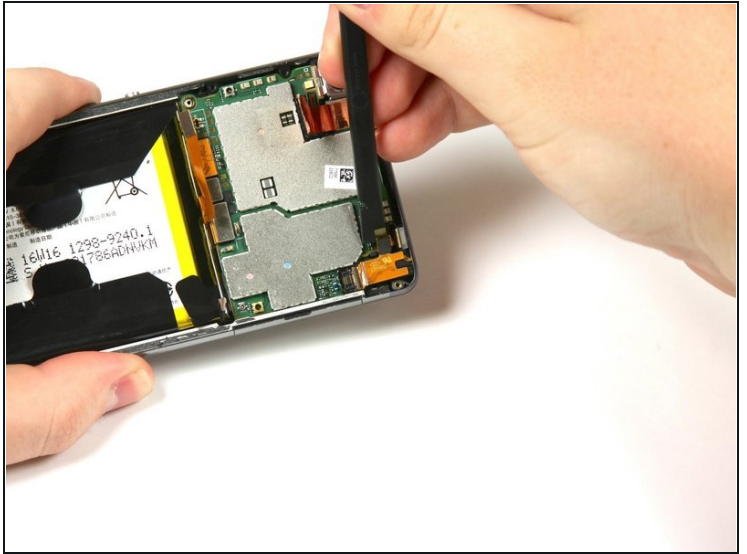
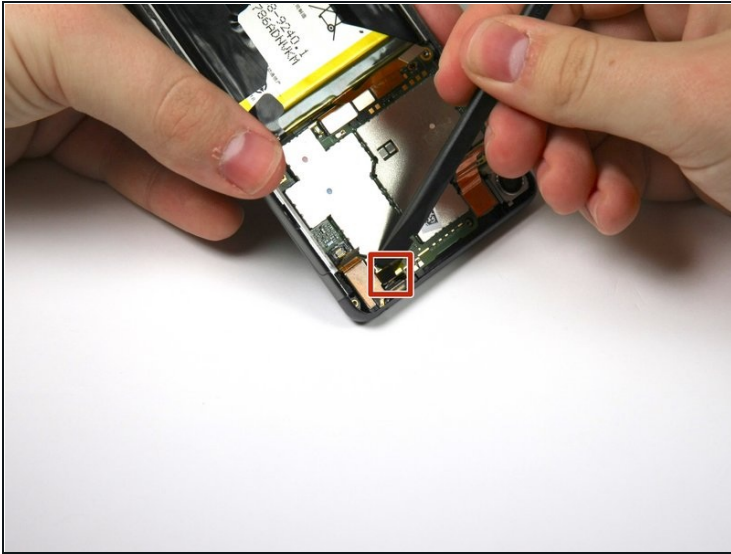
- Use the flat end of the spudger to peel up the copper tab to the right of the back camera.
- Peel back the tab past the connector.
- ⓘ Tab is stuck with adhesive.

Step 13



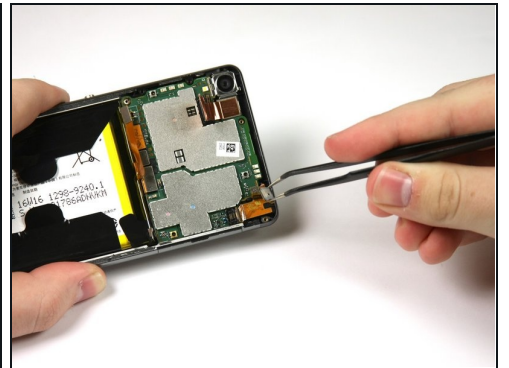
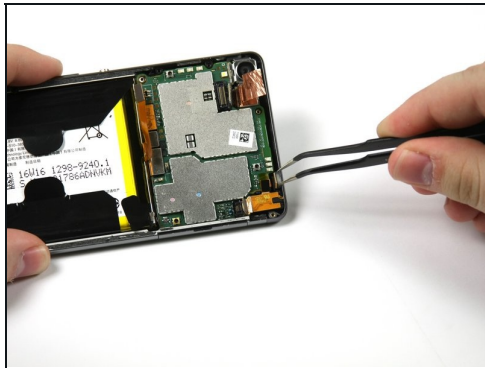
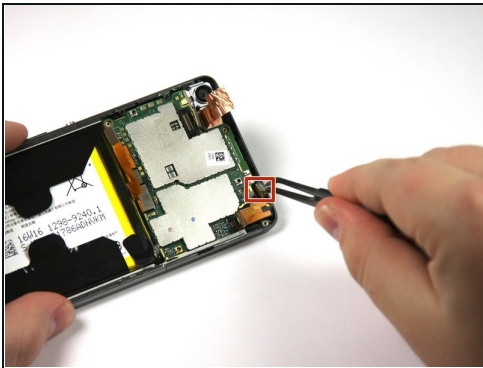
- Pry up the camera's connector to the motherboard with the nylon spudger.

Step 14



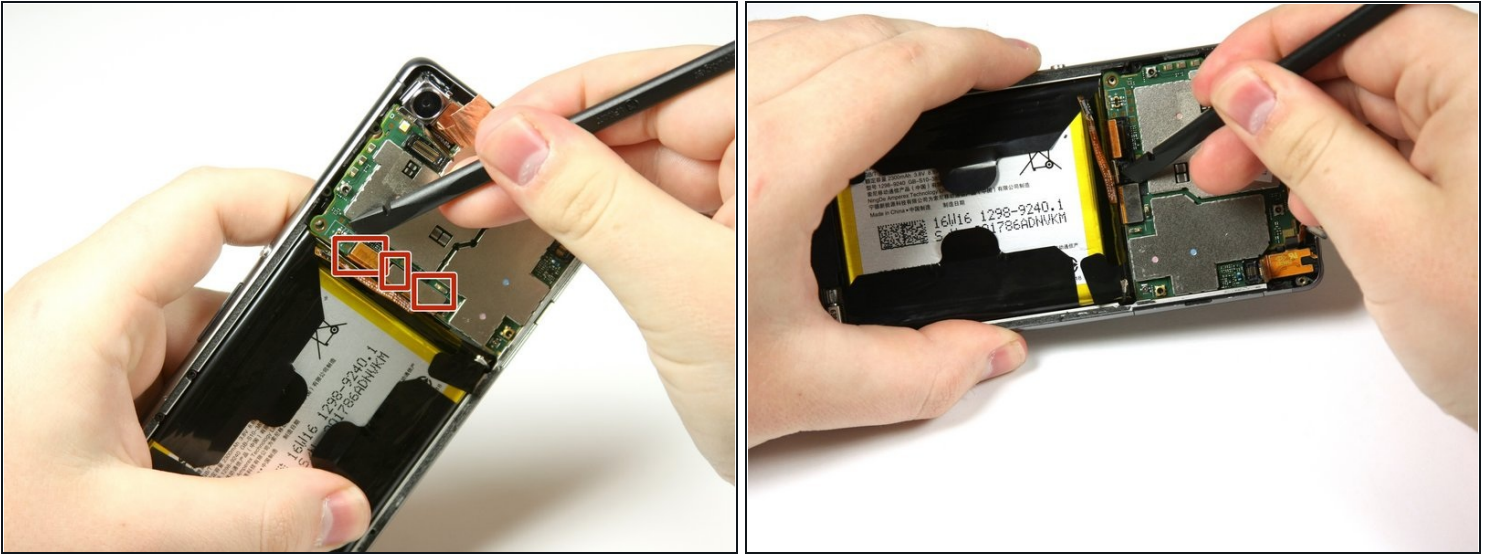
- Use the spudger to loosen the black connector from the top right of the motherboard.

Step 15



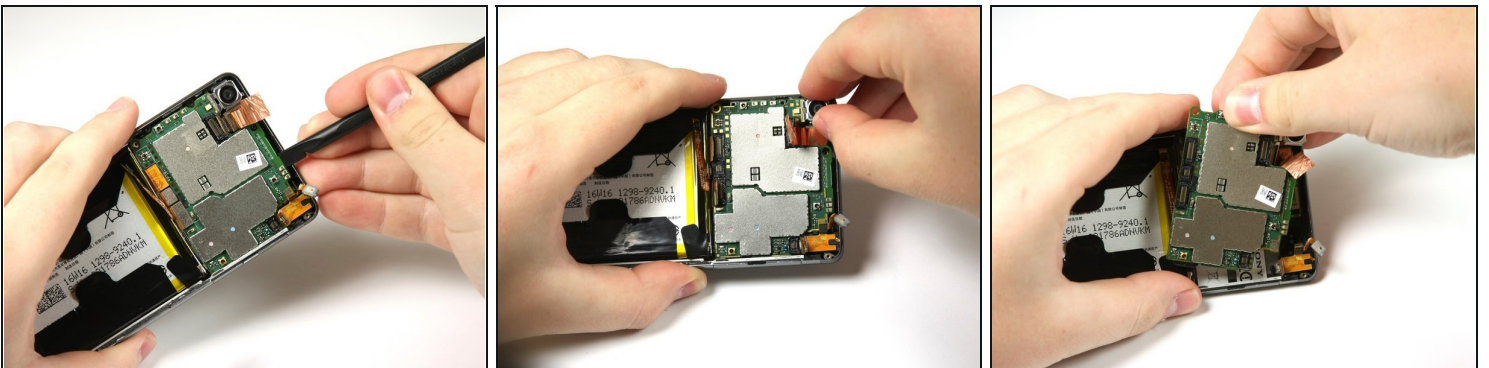
- Pull out the square shaped connector using [tweezers](#).

Step 16



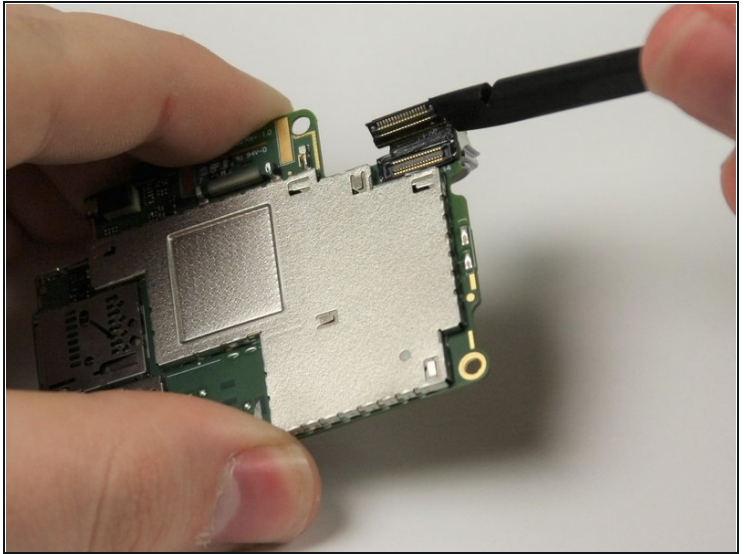
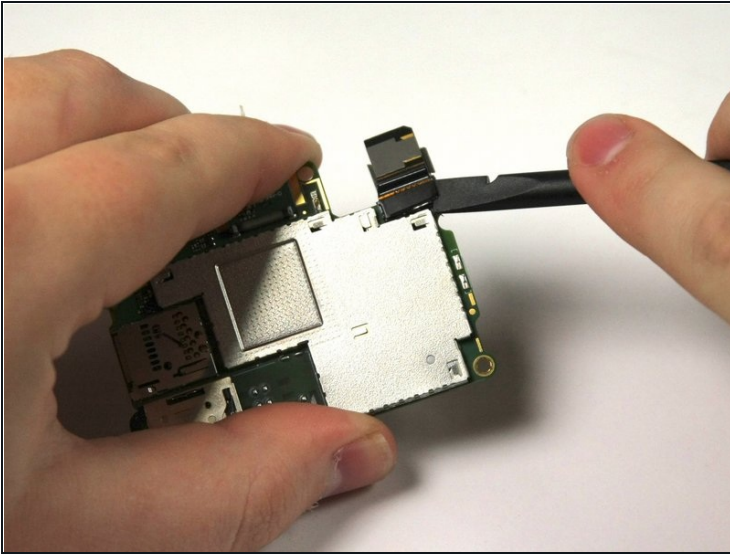
- Use the spudger to detach the three copper connectors on the bottom area of the motherboard.

Step 17



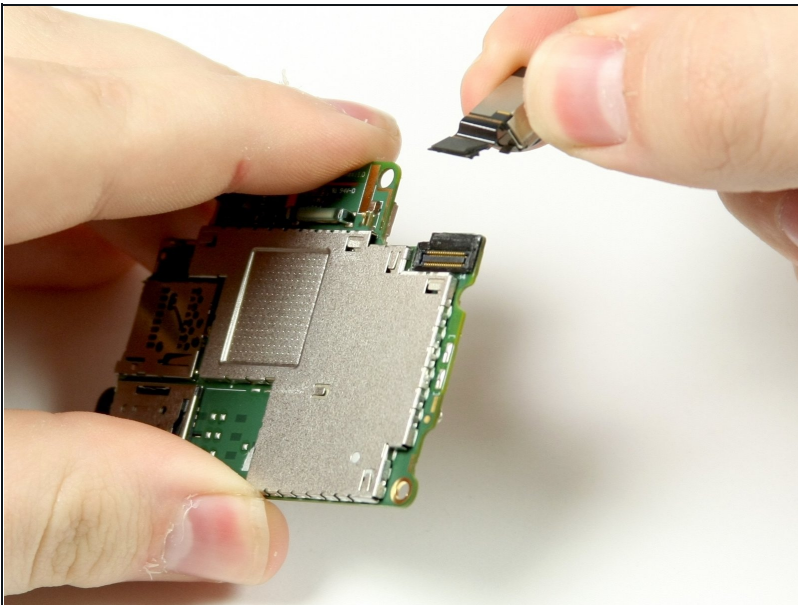
- Use the spudger to separate the motherboard from the frame.
- Pull out the motherboard using your fingers.

Step 18 — Back Camera



- Use the nylon spudger to pry up the black camera connector from the motherboard.
- ① The connector is attached with adhesive.

Step 19



- Use your fingers to gently pull the camera off the motherboard.

To reassemble your device, follow these instructions in reverse order.