



HP Stream 11-r020nr Battery Replacement

This guide will show the step by step process...

Written By: Bailey Webb



INTRODUCTION

This guide will show the step by step process of disassembling the HP stream in order to remove and replace the battery.



TOOLS:

- [iFixit Opening Tool](#) (1)
- [Phillips #1 Screwdriver](#) (1)
- [Spudger](#) (1)



PARTS:

- [HP PO02XL Stream 11 Pro G4 Laptop Battery](#) (1)

Step 1 — Battery



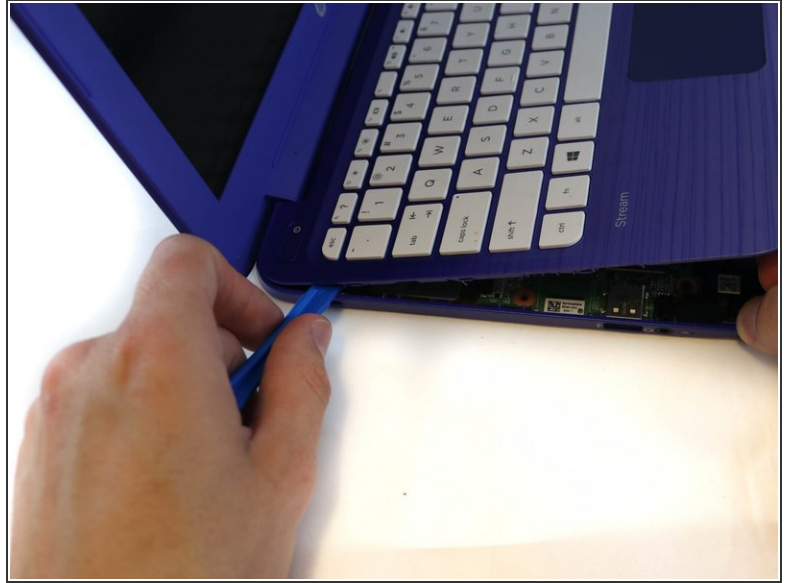
- Turn off your HP Stream 11-r020nr by holding the power button down for 10 seconds.
- Turn the device top down so the rubber feet are facing up.
- Use a metal spudger to remove all the rubber feet off of the bottom of the device, including the small ones. This will uncover 6 screws for a total of 11 screws.

Step 2



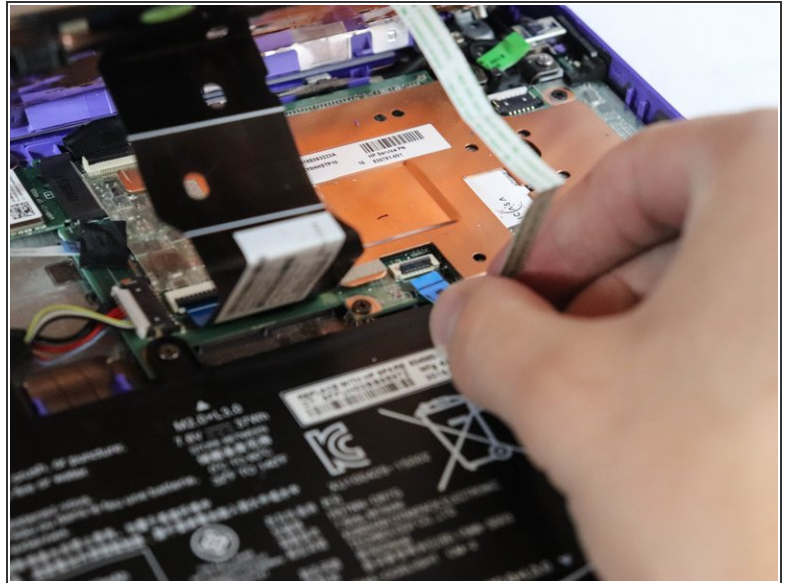
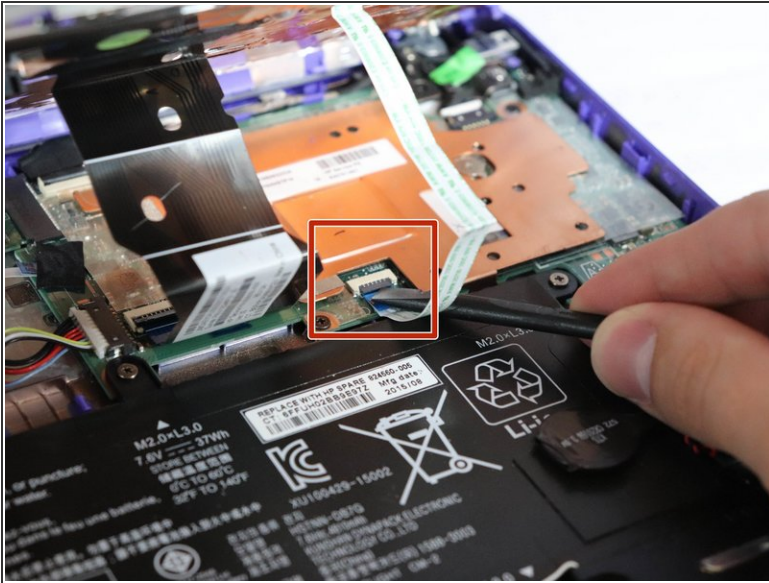
- Using the Phillips #1 screwdriver, remove all eleven of the 5mm screws.

Step 3



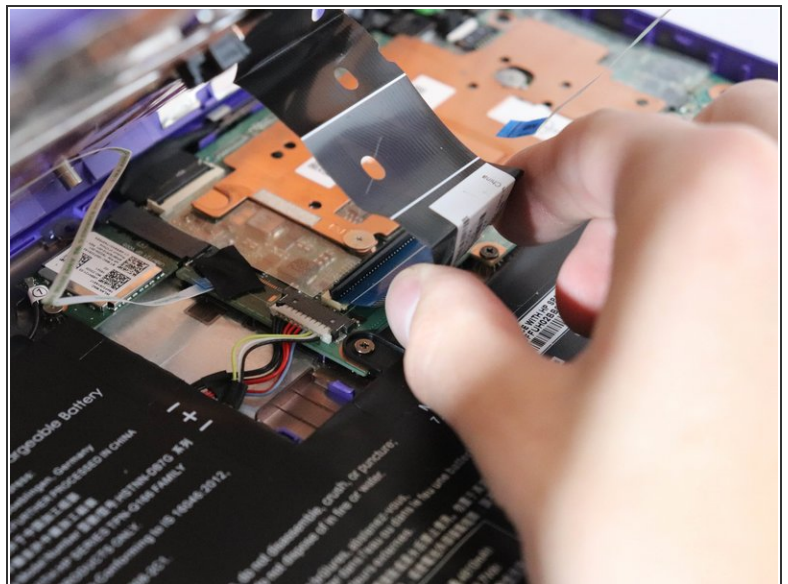
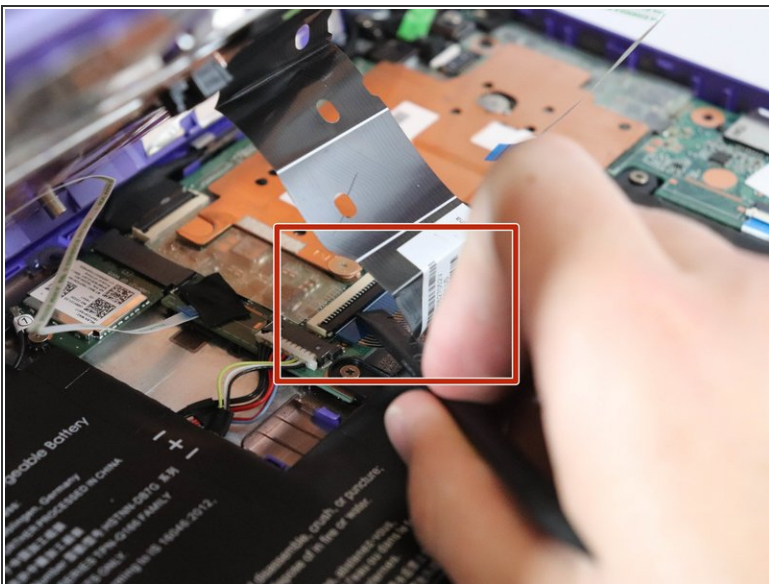
- Flip the laptop over and open.
- Using the blue plastic opening tool, separate the keyboard plate from the main body by prying up starting around the bottom corners, prying the bottom up and all the way around the whole keyboard plate.

Step 4



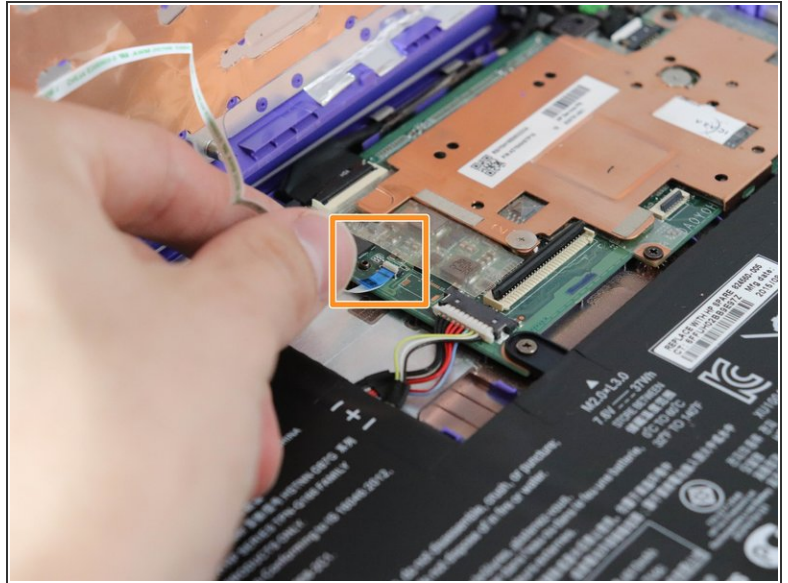
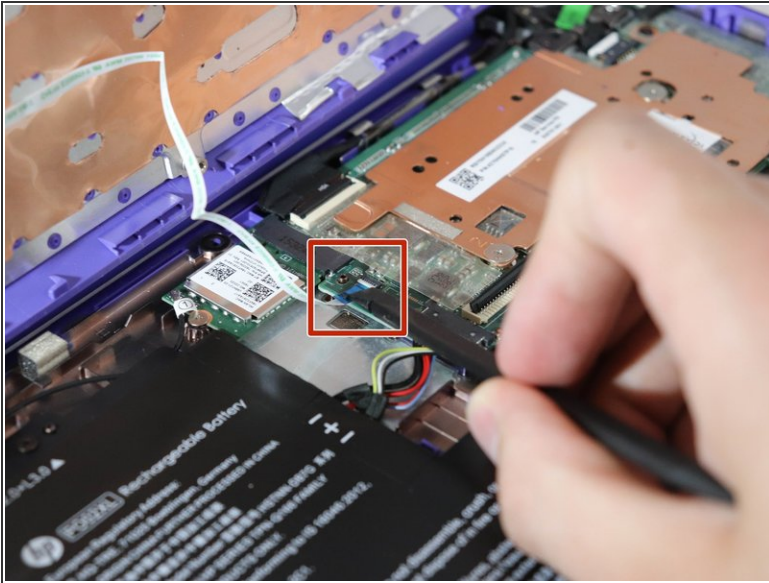
- Use the black nylon spudger to flip the black tab up that holds the ribbon cable in place.
- Lift the ribbon cable free.

Step 5



- Use the black nylon spudger to flip the black tab up that holds the large ribbon cable in place.
- Pull the ribbon cable free from the base of the keyboard.

Step 6



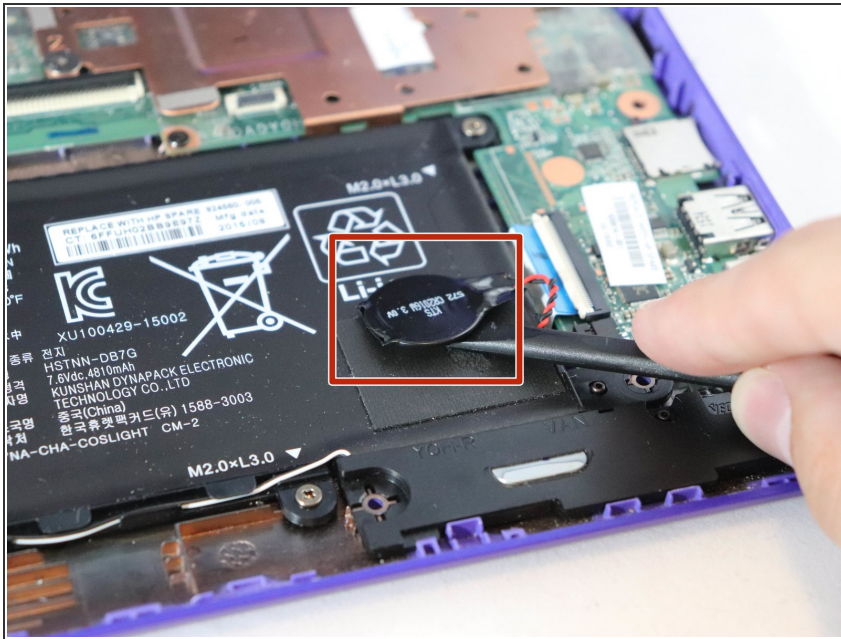
- Remove the tape covering the ribbon cable.
- Use the black nylon spudger to flip the black tab up that holds the ribbon cable in place.
- Pull the ribbon cable away from the base of the laptop.

Step 7



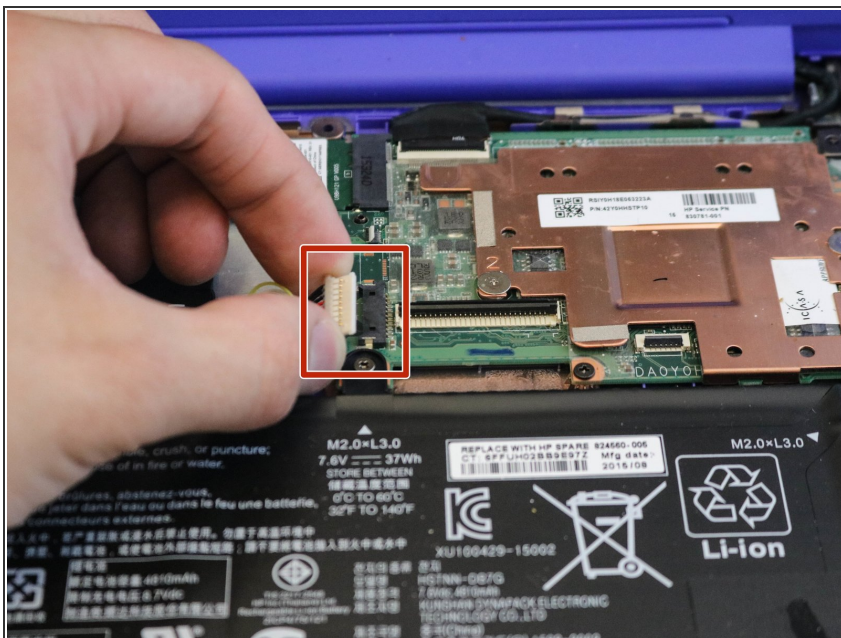
- After detaching the two large ribbon cables, carefully lean the keyboard against the screen.

Step 8



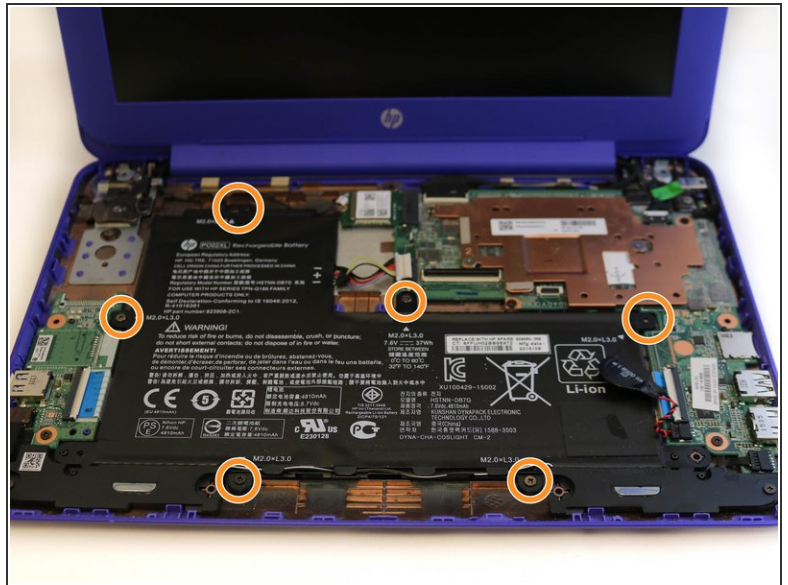
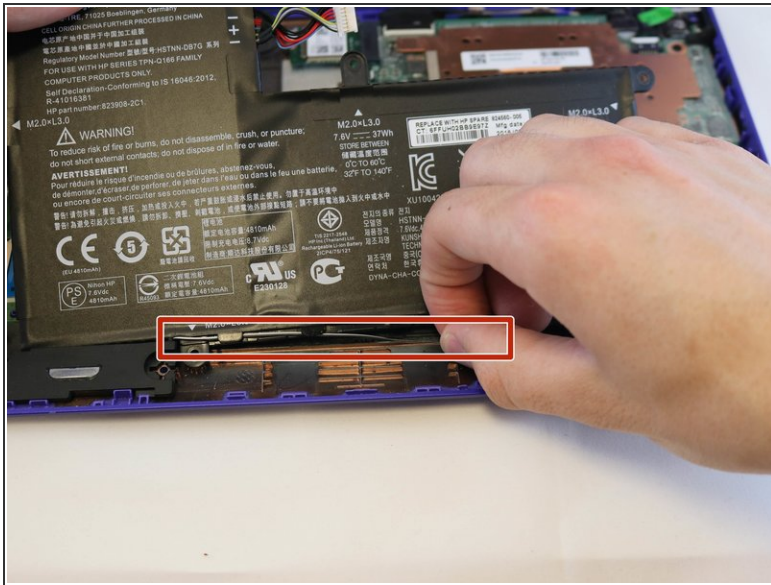
- With the black nylon spudger lift the small circular battery off of the main battery.

Step 9



- Lift the battery cable free from the motherboard with your fingers.

Step 10



- Gently pull the wire away from the battery.
- Using the Phillips #1 screwdriver, remove the six 3mm screws.

Step 11



- Gently lift and pull the battery out of the device.

To reassemble your device, follow these instructions in reverse order.