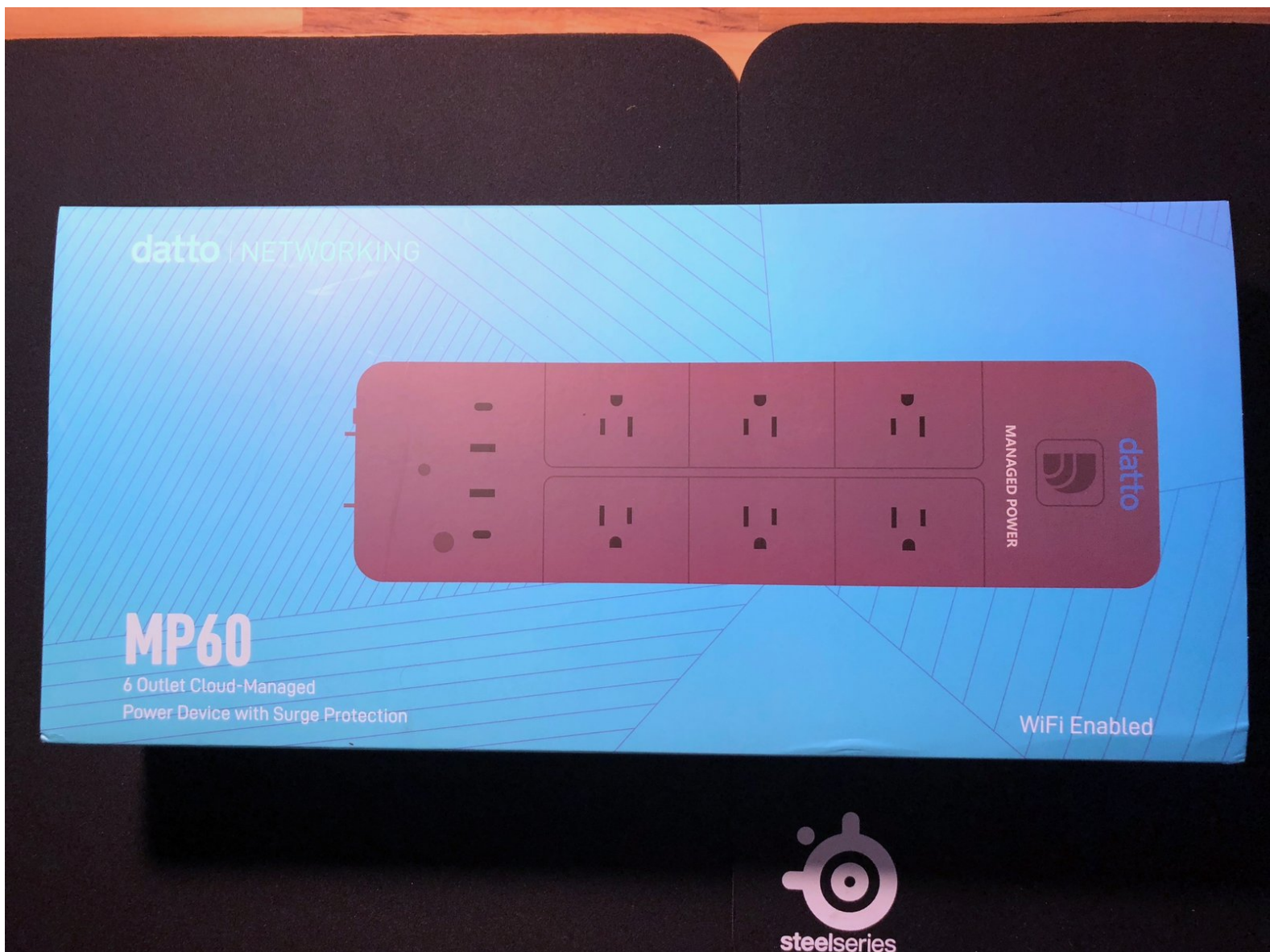




# Datto MP60 Teardown

This is a teardown to the Datto MP60 cloud enabled powerstrip and surge suppressor.

Written By: mcwiggin





## TOOLS:

- [Phillips #1 Screwdriver](#) (1)
-

## Step 1 — The box



### ● MP60 Packaging

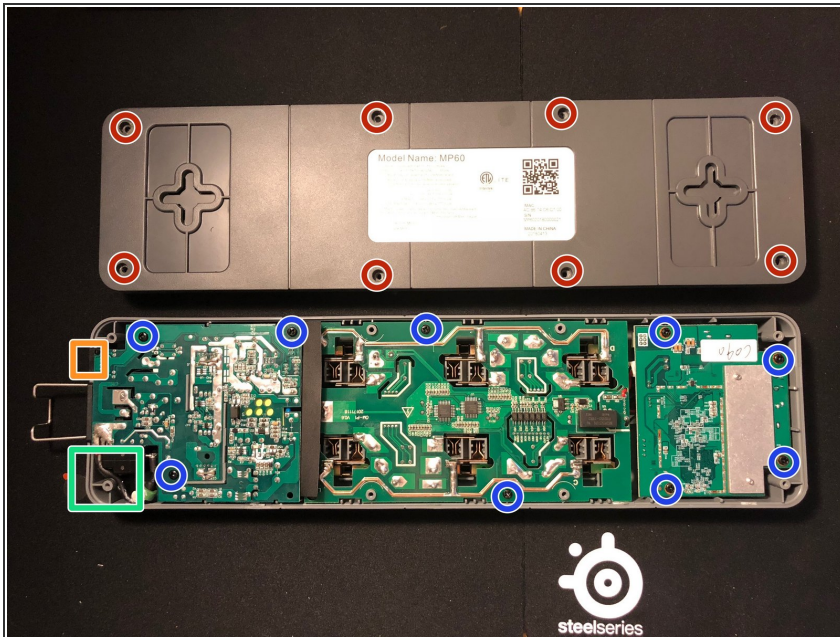
## Step 2 — Inside the box



- MP60
- 6ft Heavy Gauge Line Cable
- 6ft Ethernet Cable
- Wall mounting screws

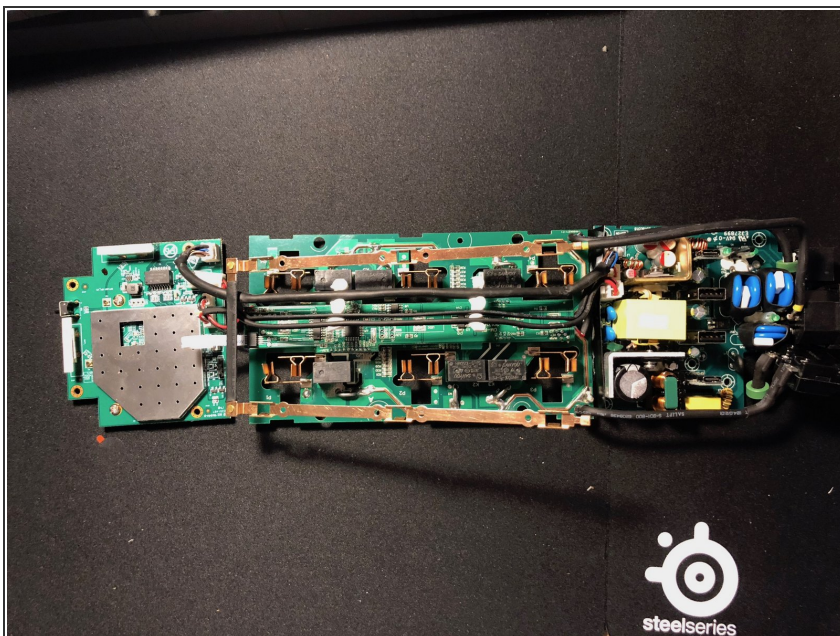


### Step 3 — Remove the screws



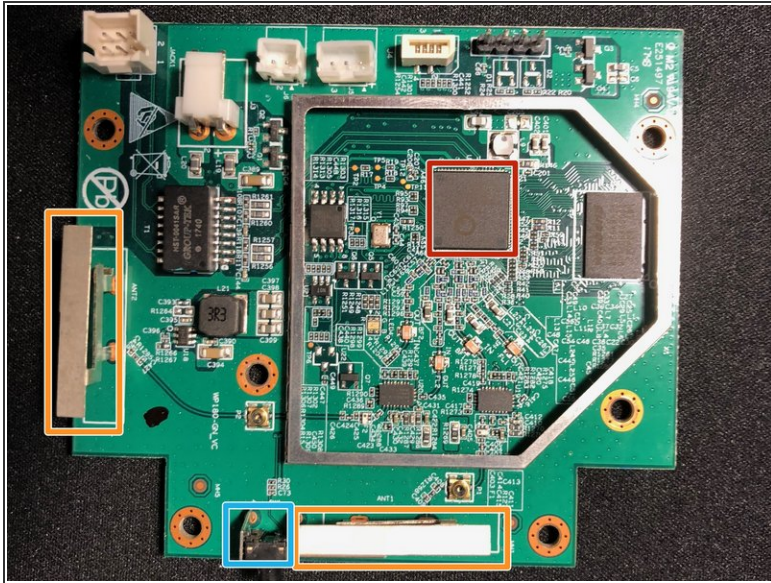
- 8x 3mm Triangle bit case screws
- 9x Philips #1 Screws
- User resettable 16a breaker
- 10/100 Ethernet

### Step 4



- Assembly lifts out as a single piece after removing screws
- The wifi board and antennas are located as far away as possible from the power supply to avoid interference.

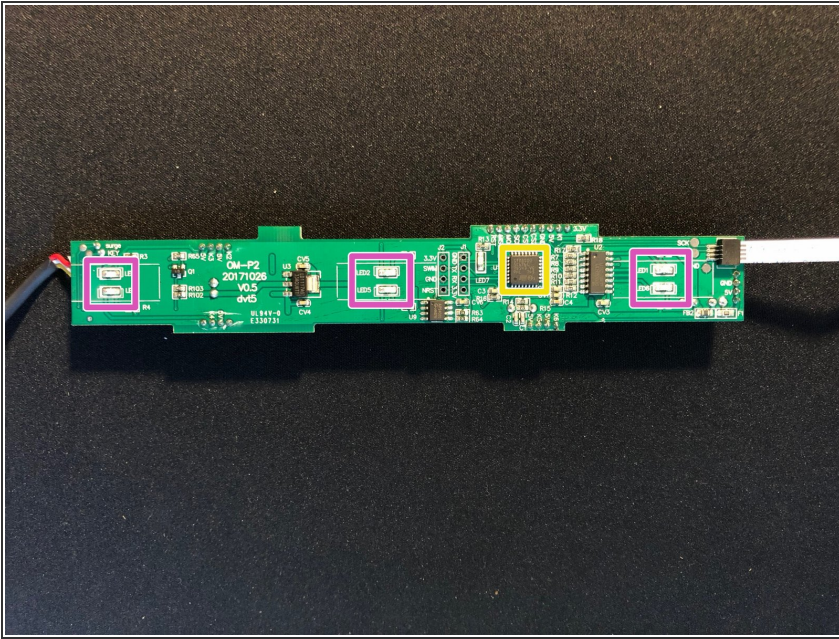
## Step 5 — Wifi Board



- Qualcomm - QCA9531
  - 560 Mhz CPU (Not too shabby for some outlets)
  - 2x2 B/G/N 2.4 Ghz Wifi
- Antenna
- Reset Switch
- Heatsink

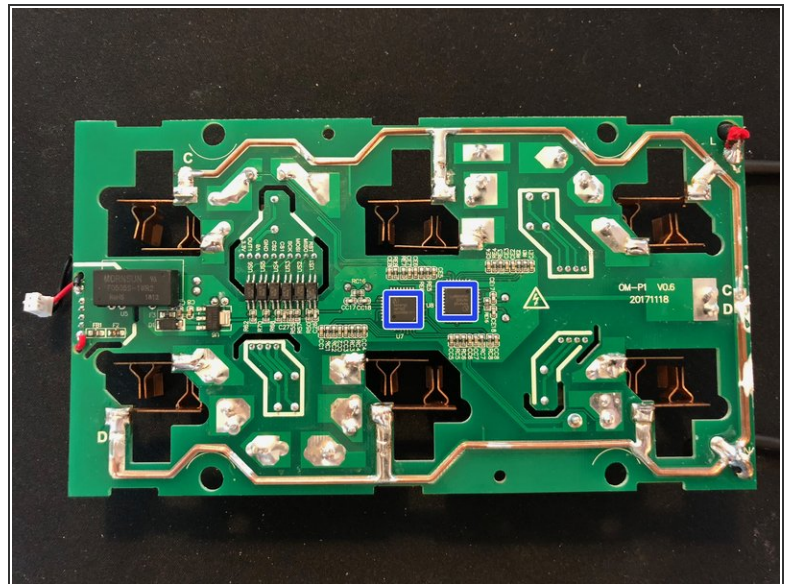
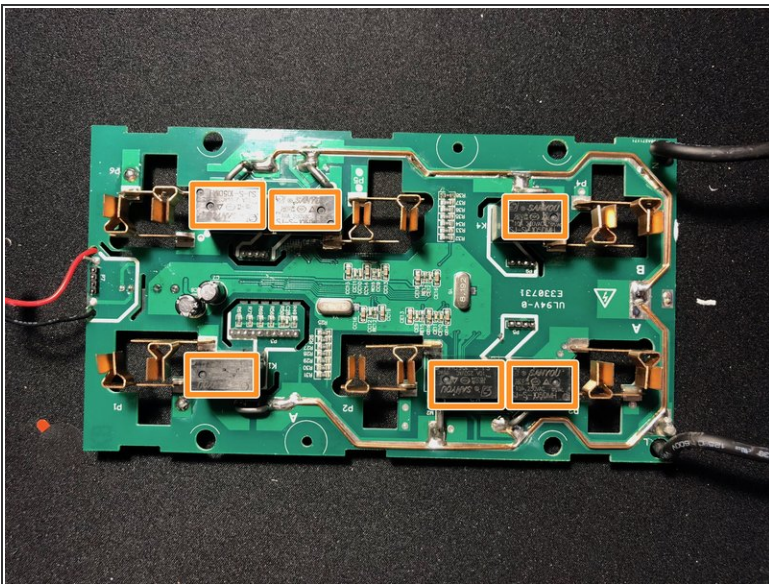


## Step 6 — Outlet Control Board



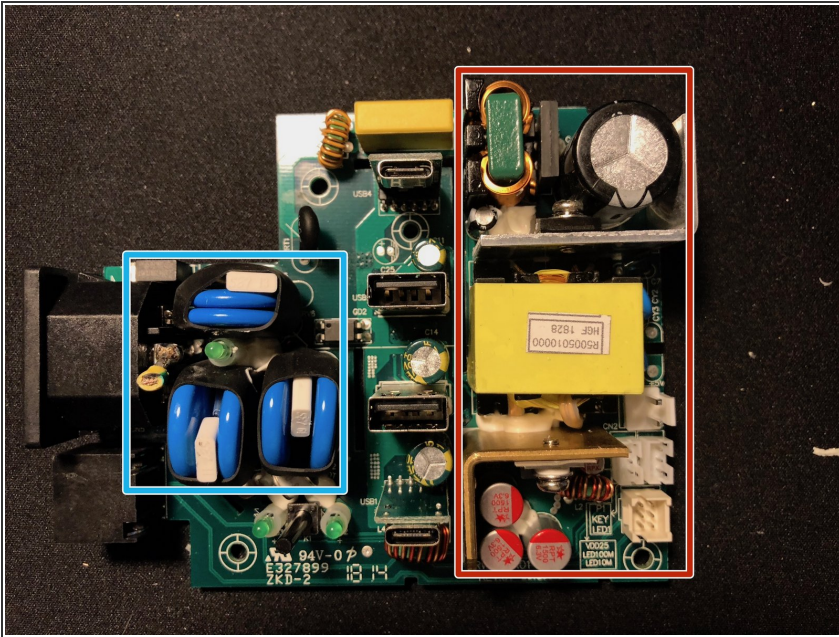
- STM8S00 - 16Mhz microcontroller
- Outlet Status LEDs

## Step 7 — Outlet Board



- 10A Relay
- Renergy RN7302 3-Phase power metering IC

## Step 8



- Surge suppression circuitry
- High quality 120VAC to 5V DC converter