



# OUKITEL K10000 MAX Stuck SIM Card Removal

This guide will show how to extract a stuck SIM card in the K10000 MAX.

Written By: Steve Muller



---

## INTRODUCTION

If your SIM card has remained lodged in your device after removing the tray, this guide will show you how to access the stuck SIM card by partially disassembling the device. This disassembly process can also be used to access the main components like the battery and motherboard.



### TOOLS:

- [Pro Tech Toolkit](#) (1)
-

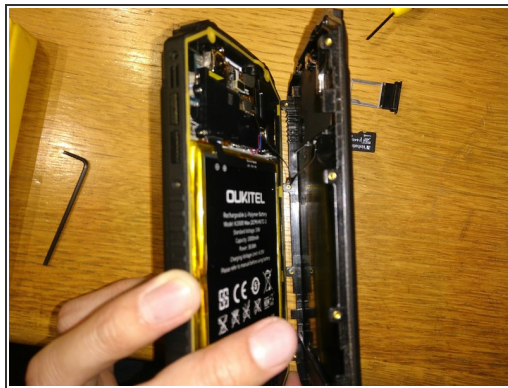


## Step 1 — OUKITEL K10000 MAX Stuck SIM Card Removal



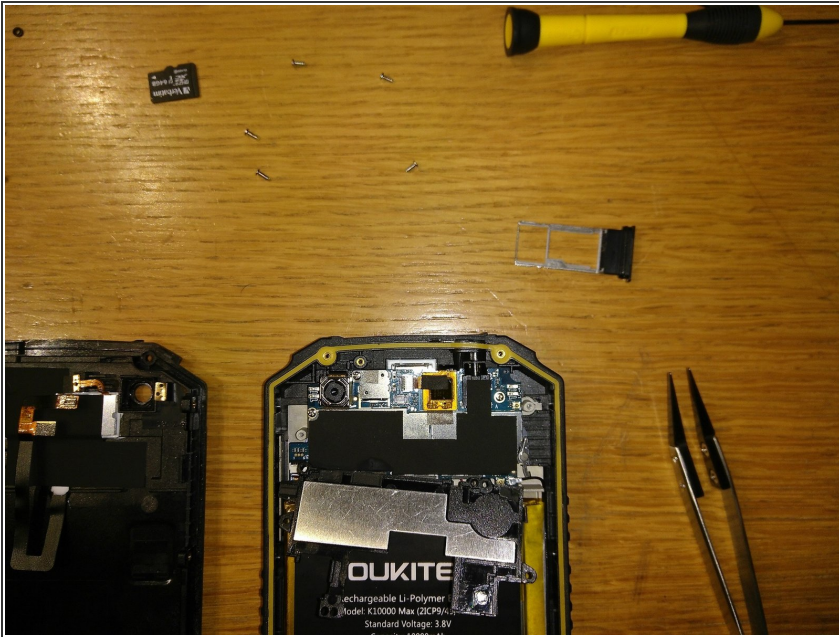
- Unscrew 8 side screws (flat 2.4mm or dedicated torx), then 4 rear screws (hex 1.5mm).

## Step 2



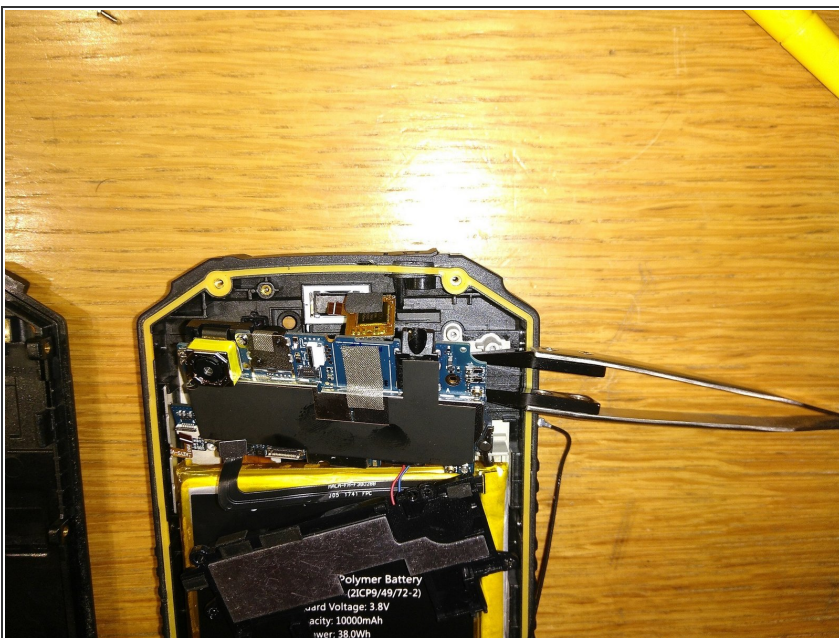
- Withdrawal of back of phone and unplugging of LED connector.

## Step 3



- Unscrew 5 screws (philips #0) off of black support.
- Withdrawal of black support

## Step 4



- Unscrew 3 screws (philips #0) maintaining PCB.
- Unplug antenna connector.
- Unplug ZIF on the left.
- Unplug ZIF on top.
- Unplug the two bottom connectors.



## Step 5



- Remove the stuck SIM card.

To reassemble your device, follow these instructions in reverse order.