



Infinity IT-8500 Massage Mechanism Replacement

How to replace the massage motors and wire harness in the Infinity IT-8500 massage chair.

Written By: Nick



INTRODUCTION

Use this guide to learn how to replace the massage motors and wire harness in the Infinity IT-8500 massage chair. If your massage motors are actuating incorrectly, the massage motors stop moving like they used to, or the entire motor stops movement completely, it may be time to replace the massage mechanism in your chair.



TOOLS:

- [Cordless Drill](#) (1)
 - [Zip Ties](#) (1)
 - [Phillips #2 Screwdriver](#) (1)
 - [Flush Wire Cutters](#) (1)
-

Step 1 — Massage Mechanism



- The back cover is covered by this leather cover. which unzips easily.
- Zipper is located here and there are 2 of these on either side.

Step 2



- Remove all 6 screws

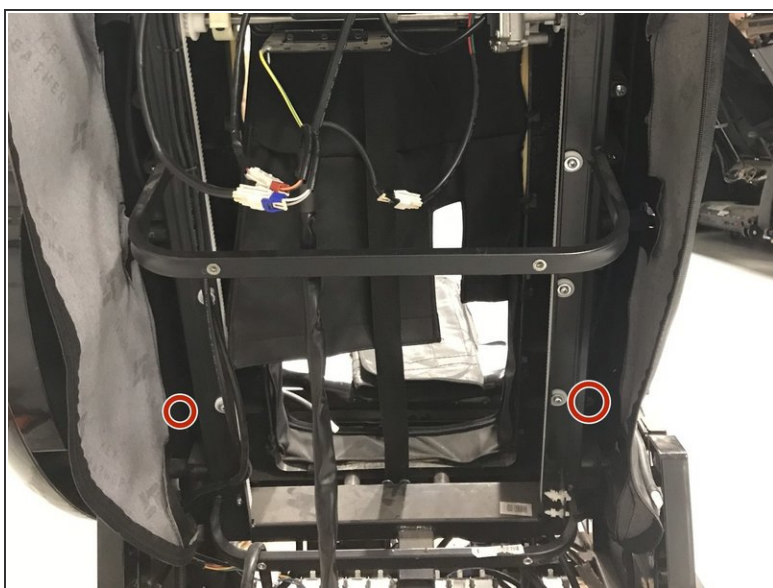
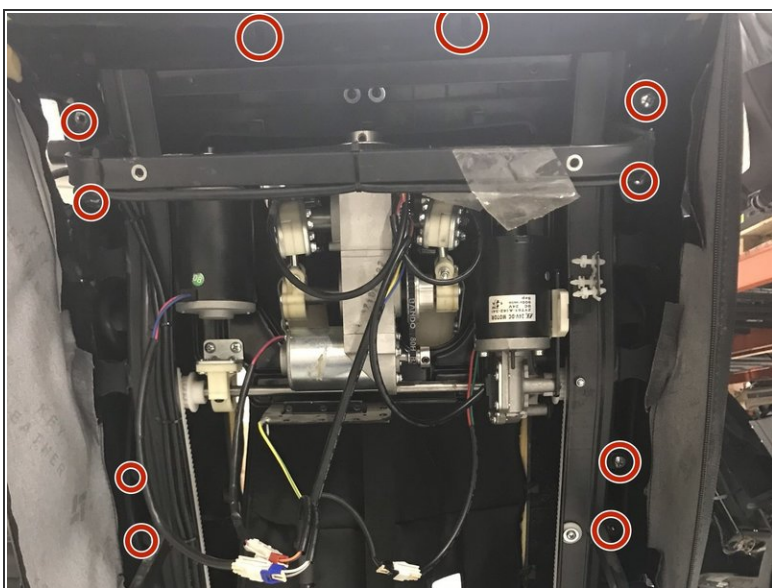
Step 3



i At this point you should have the speakers dismounted and armrests unlatched.

- Press Down on Latch between armrest and chair body .
- What the result should look like.

Step 4



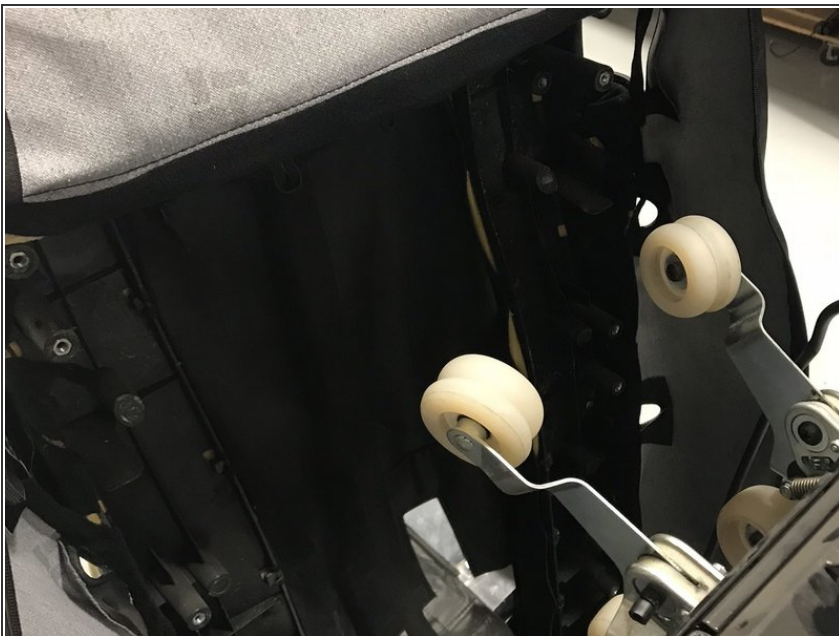
- Remove all 12 screws from the frame.

Step 5



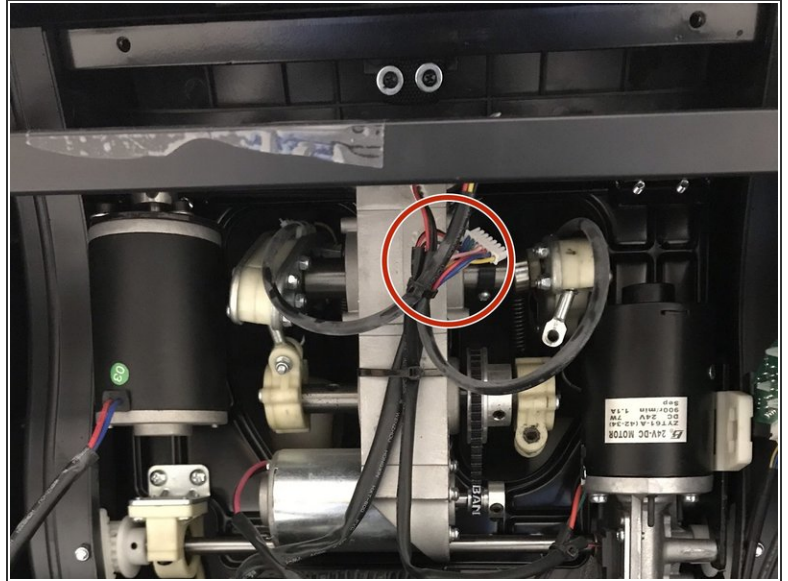
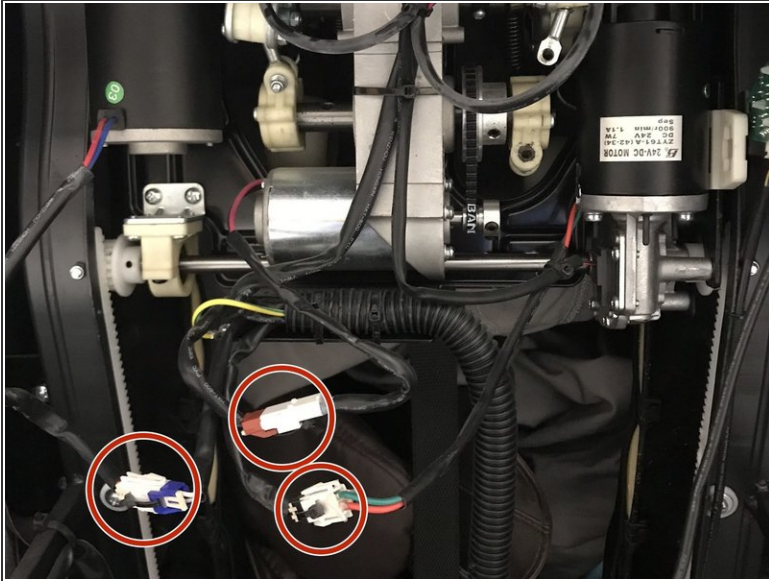
- Note the speaker bracket will need be threaded through its leather slot and left hanging inside the back of the chair.
- ⓘ Next you will need to remove the leather from the Posts . To do this simply pull the leather over each post.

Step 6



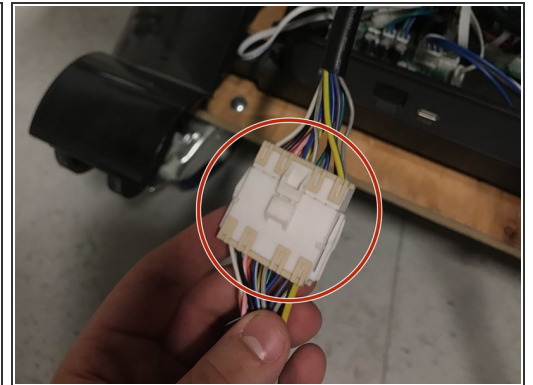
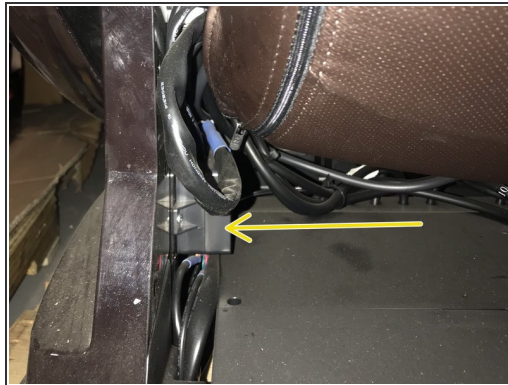
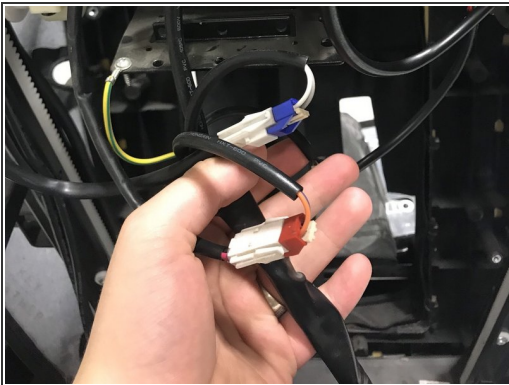
- ⚠ The chair piece should separate from the frame with ease , should not have to force it . See previous step
- ⓘ From here that chair piece should hold itself up while you remove that mechanism.

Step 7



- Now we need to disconnect the wire harness from the mechanism . Do this by simply unplugging the marked cables

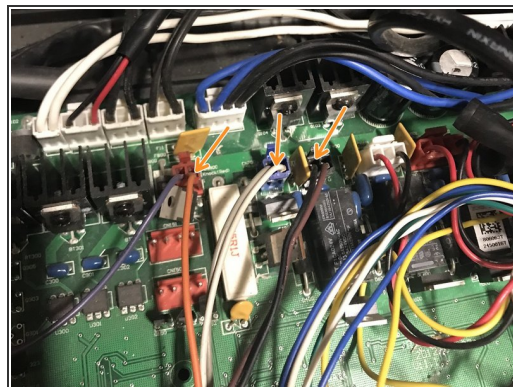
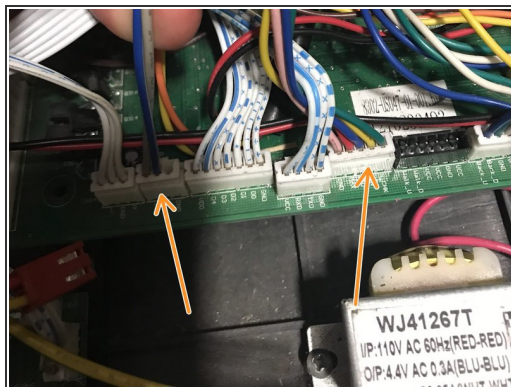
Step 8 — Wire harness



⚠ ONLY FOLLOW THIS STEP AND THE NEXT IF YOU ARE REPLACING THE ENTIRE WIRE HARNESS IF NOT THEN SKIP THIS AND STEP 9.

- When replacing the wire harness you need to disconnect the upper portion of the harness from the mechanism and then locate the quick disconnect .
- Quick disconnect

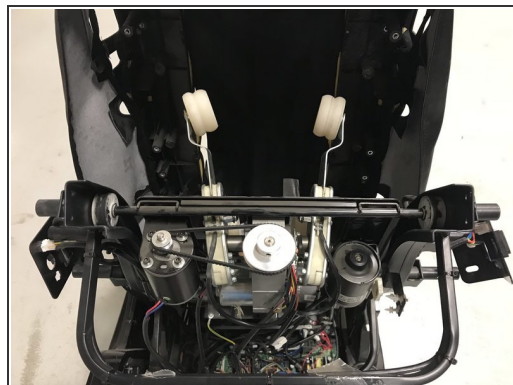
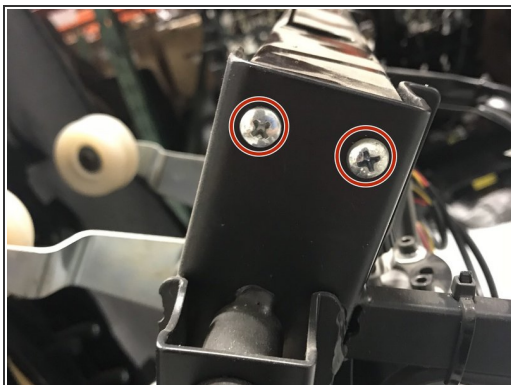
Step 9 — Wire Harness



i This step will show you where the wires are for the lower portion of the harness.

- Remove the 3 screws
- These are the locations of the the wires for the lower harness

Step 10



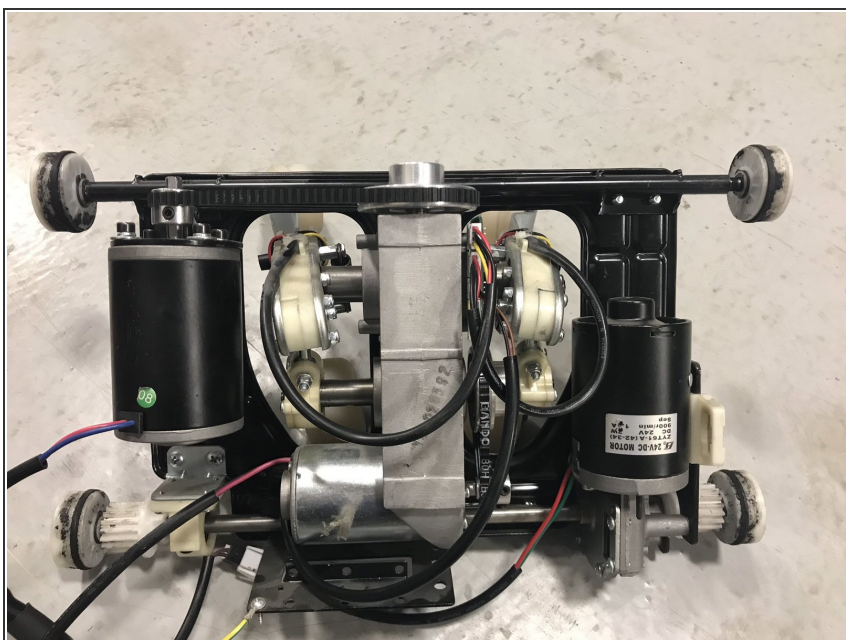
- Remove all 4 screws on top bar

Step 11



- ⓘ Next attach a flat head bit to a cordless drill and insert it into the the top of the Up and Down motor. this will allow you to drive the mechanism out the top of the track.

Step 12



- ⓘ ALL DONE!

To reassemble your device, follow these instructions in reverse order.