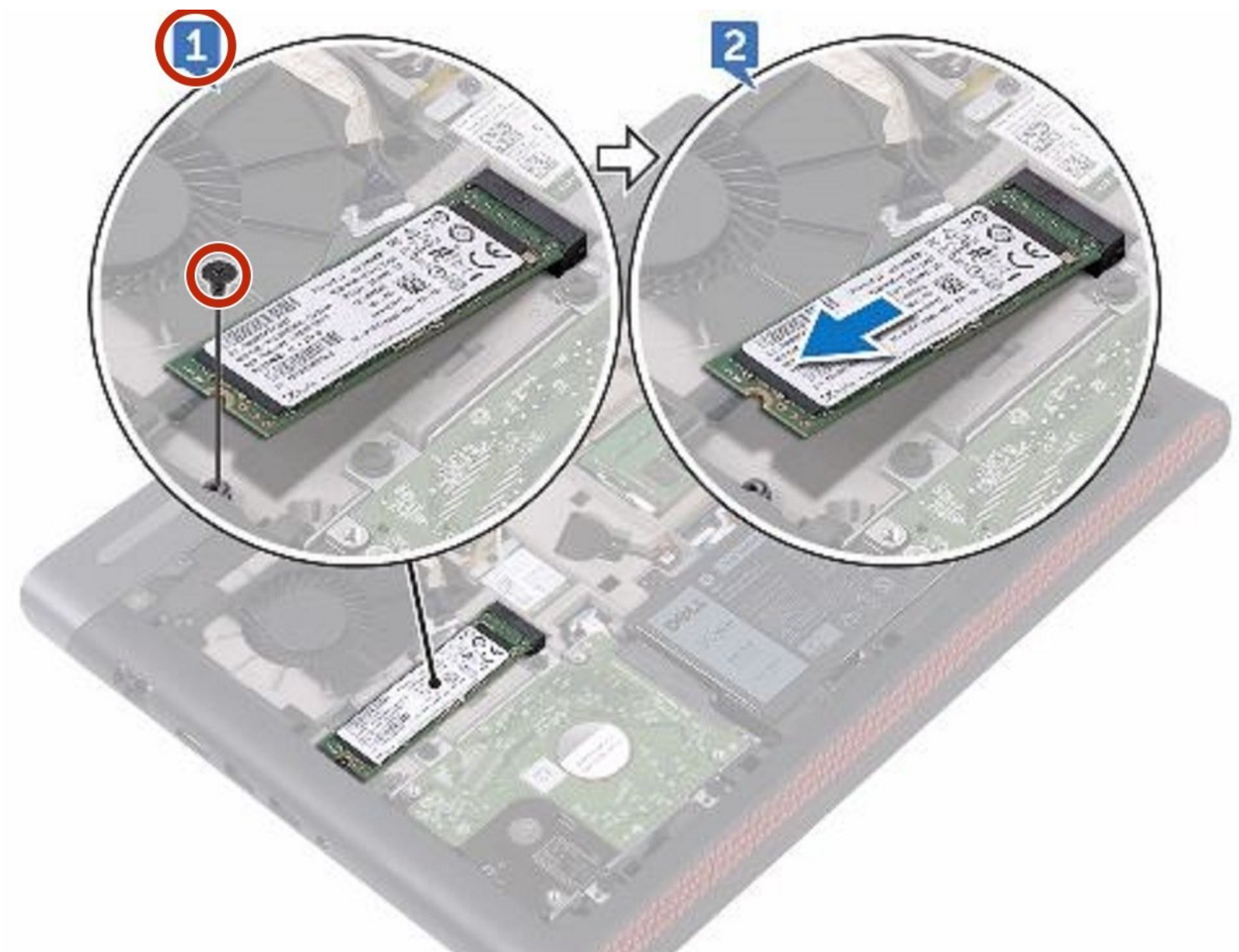




# Dell Inspiron 14 Gaming 7467 Solid-State Drive Replacement

Written By: Terrence15



---

## INTRODUCTION

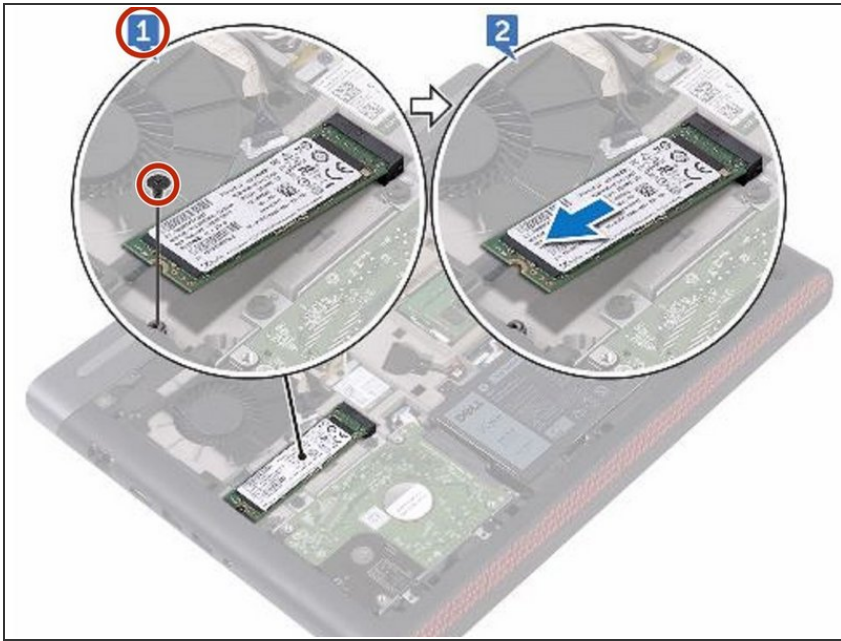
In this guide, we will show you how to remove and replace the Hard Drive.



### TOOLS:

- [Phillips #0 Screwdriver](#) (1)
-

## Step 1 — Remove the Screw



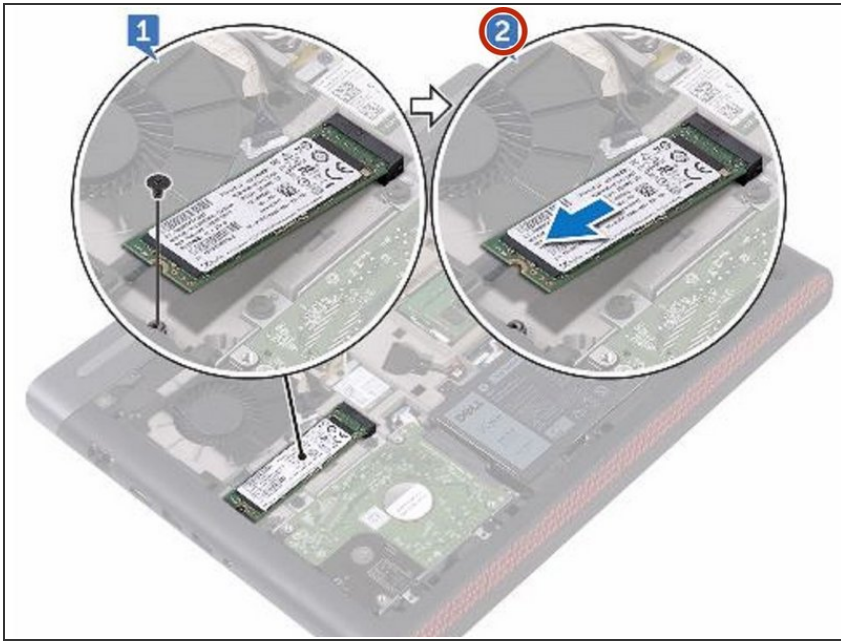
**⚠ WARNING:** Before working inside your computer, read the safety information that shipped with your computer and follow the steps in [Before Working Inside Your Computer](#). After working inside your computer, follow the instructions in [After Working Inside Your Computer](#).

**⚠ CAUTION:** Solid-state drives are fragile. Exercise care when handling the solid-state drive.

**⚠ CAUTION:** To avoid data loss, do not remove the solid-state drive while the computer is in sleep or on state.

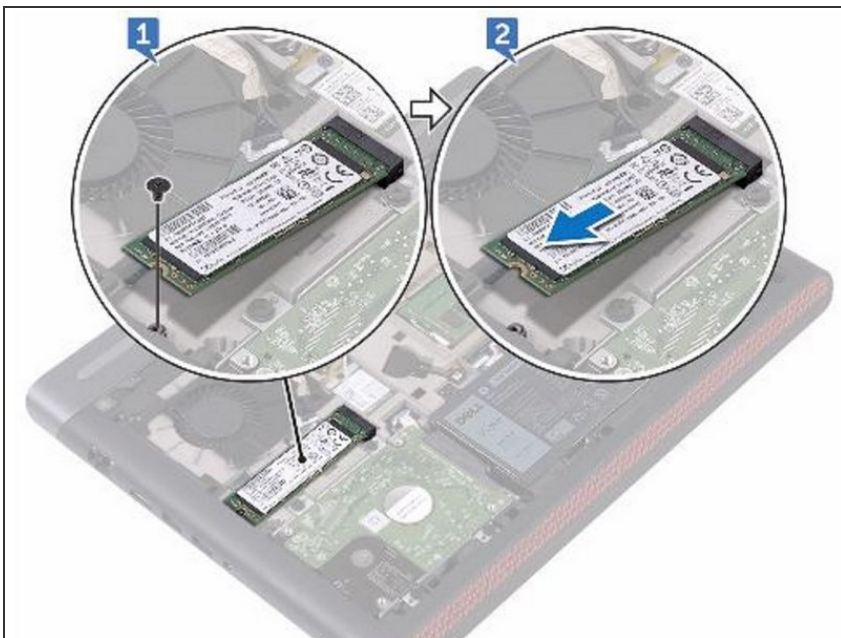
- Remove the screw (M2x3) that secures the solid-state drive to the computer base.

## Step 2 — Remove the Solid-State Drive



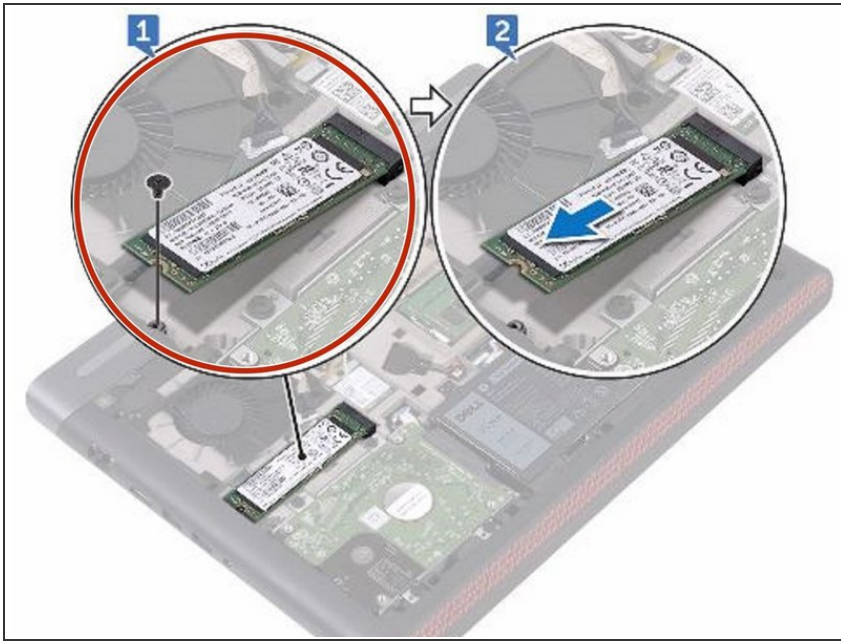
- Slide and remove the solid-state drive from the solid-state drive slot.

## Step 3 — Align the Notch



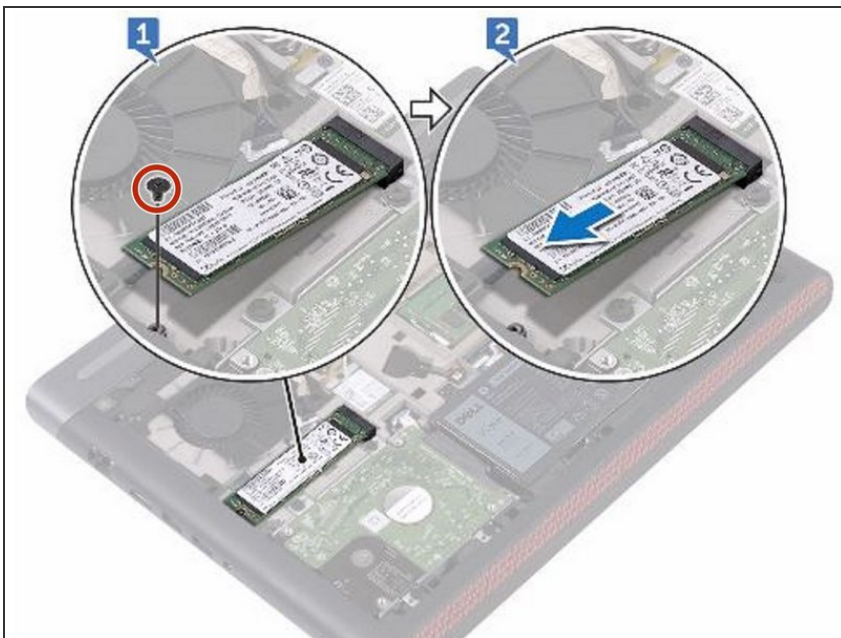
- Align the notch on the solid-state drive with the tab on the solid-state drive slot, and slide the solid-state drive into the solid-state drive slot.

## Step 4 — Align the Hole



- Press the other end of the solid-state drive to align the screw hole on the solid-state drive with the screw hole on the computer base.

## Step 5 — Replace the Screw



- Replace the screw (M2x3) that secures the solid-state drive to the computer base.