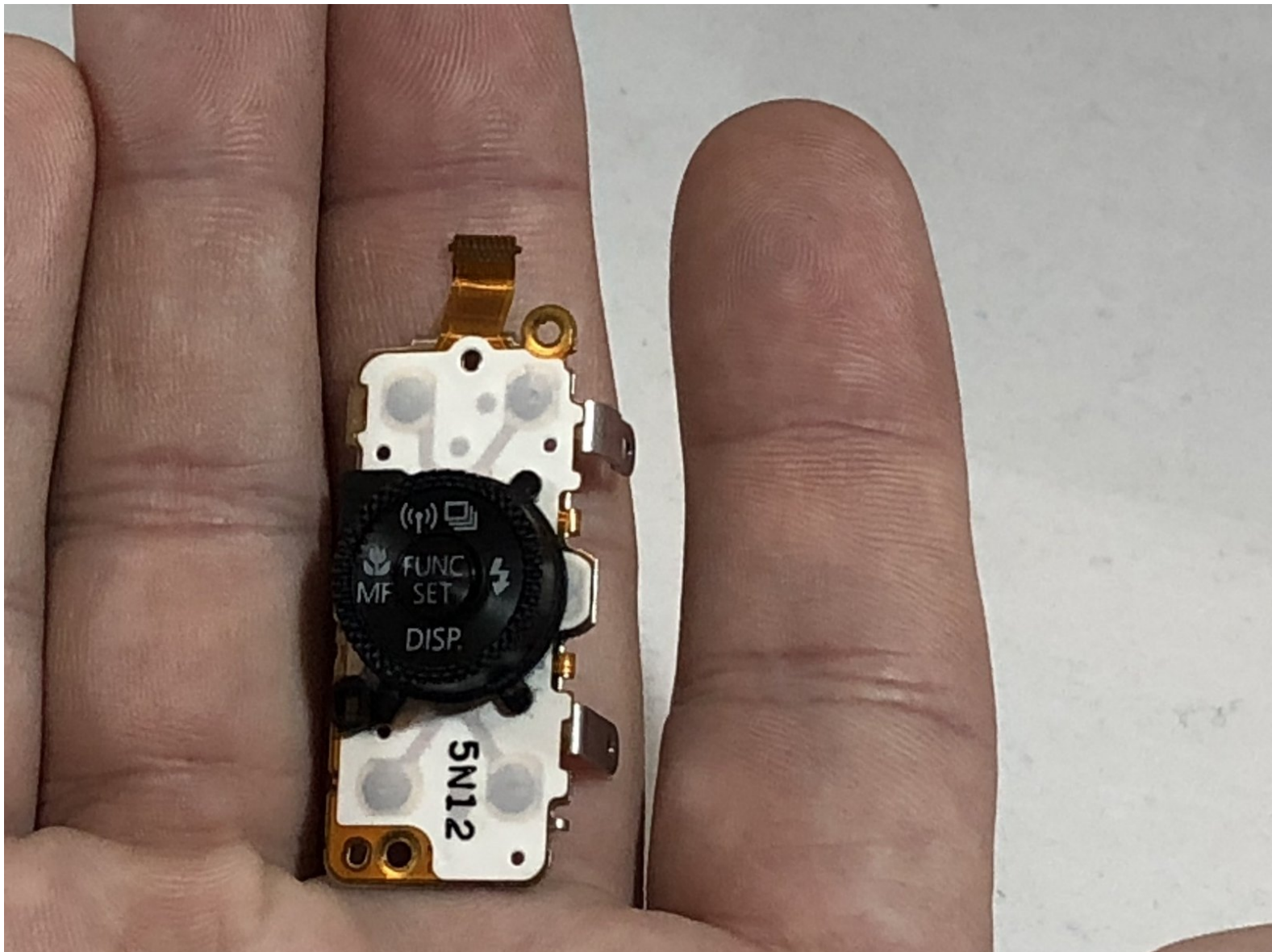




# Canon PowerShot G7X Dial Replacement

In this repair guide, we will be removing the dial on the Canon PowerShot G7X.

Written By: McKenzie Devlin



---

## INTRODUCTION

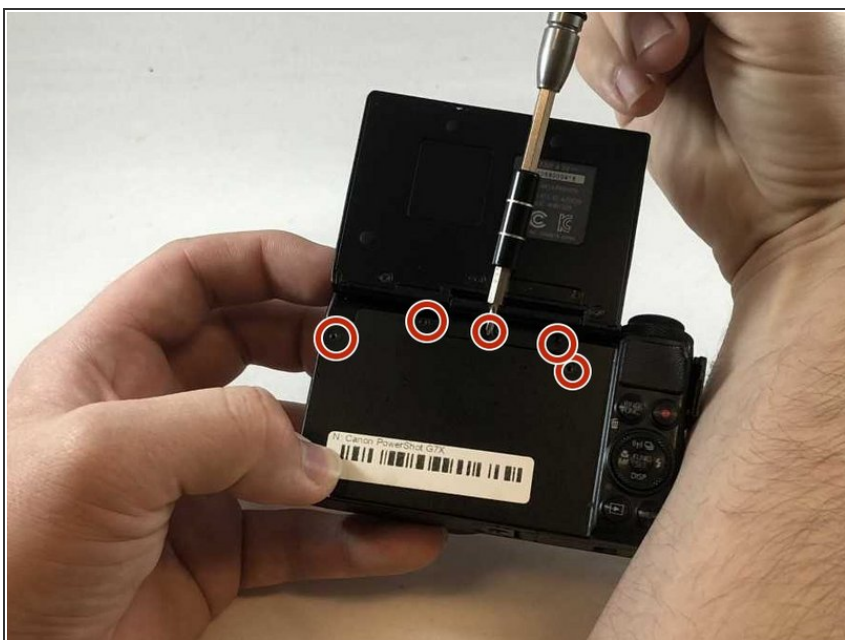
In this guide, we will be showing you how to remove the flash dial in order to replace it.

---

### TOOLS:

- [Spudger](#) (1)
  - [Phillips #000 Screwdriver](#) (1)
-

## Step 1 — Dial



- Remove the five 2mm Phillips #000 screws that are under the screen of the camera.

## Step 2



- Remove the two 3mm Phillips #000 screws under the AV-out digital flap.
- Remove the two 3 mm Phillips #000 screws from the side of the camera.

### Step 3



- Remove the two 3 mm Phillips #000 screws on the side of camera with the flash toggle.

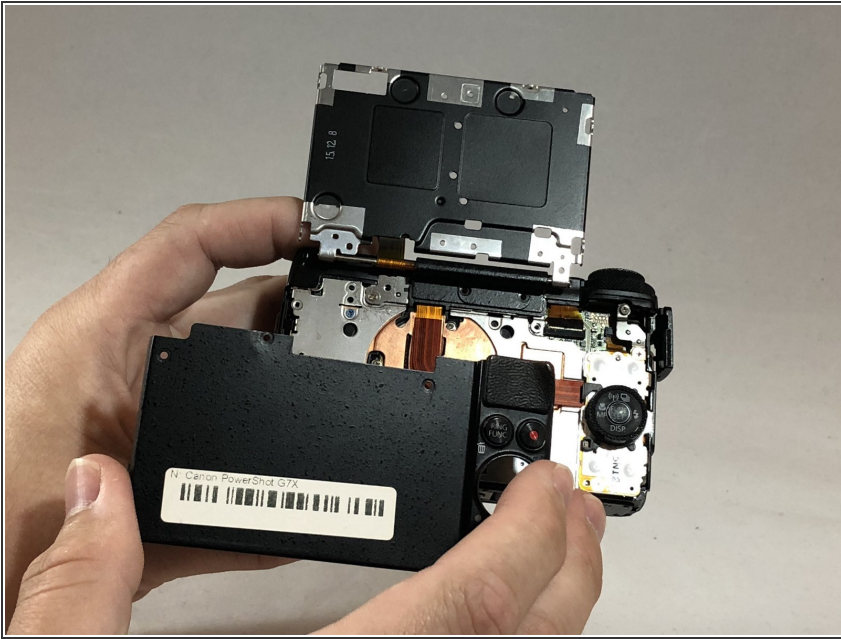
### Step 4



- Remove the four 4 mm Phillips #000 screws from the plate on the bottom of the camera.

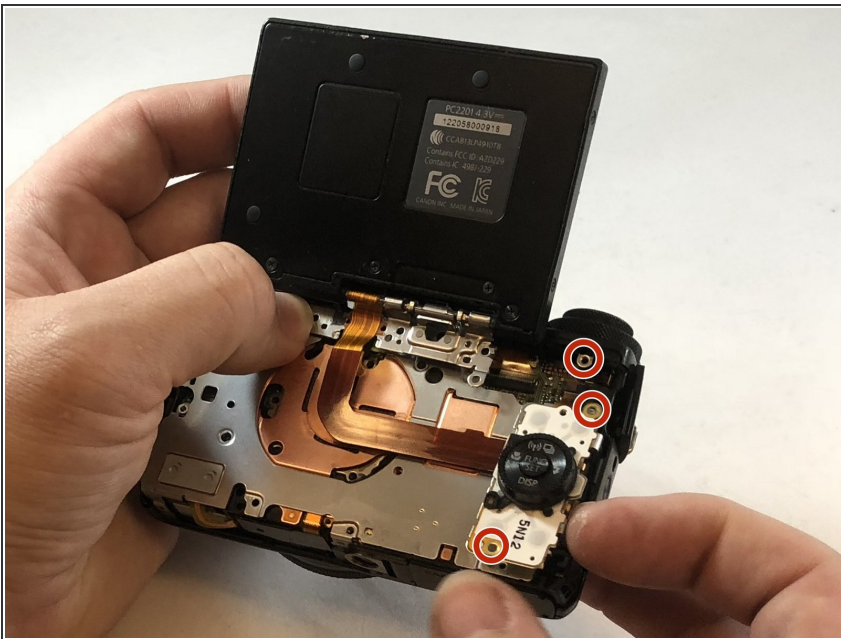


## Step 5



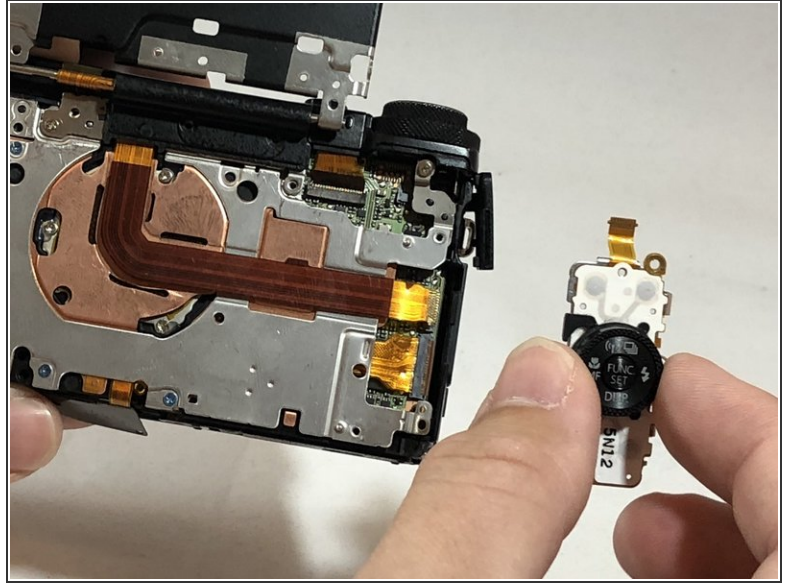
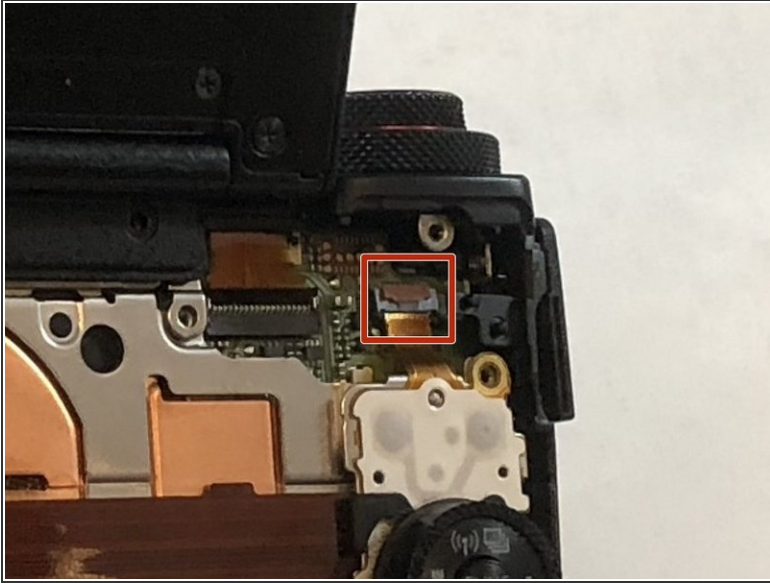
- Remove the back plate.

## Step 6



- Remove the three 3 mm Phillips #000 screws around the dial.

## Step 7



- Using the nylon spudger, gently lift the ZIF tab.
- Disconnect the ribbon cable that connects the dial to the motherboard.
- Remove the dial from the device.

To reassemble your device, follow these instructions in reverse order.