



Canon PowerShot G7X Lens Replacement

This guide will detail the steps required to replace the camera lens for a Canon Powershot G7X.

Written By: Kyle Pellham



INTRODUCTION

The lens is essential in any camera. Any flaw in a lens will ruin a cameras ability to operate. This guide will detail the steps required to replace the camera lens for a Canon Powershot G7X.



TOOLS:

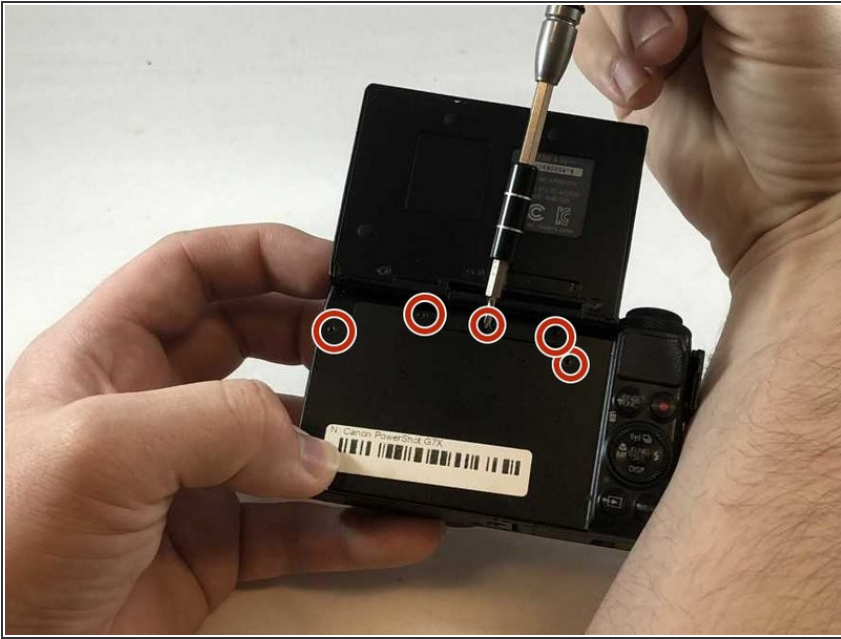
- [Phillips #000 Screwdriver](#) (1)
- [Spudger](#) (1)
- [iFixit Opening Tools](#) (1)



PARTS:

- [Canon Powershot G7X replacement lens](#) (1)

Step 1 — Dial



- Remove the five 2mm Phillips #000 screws that are under the screen of the camera.

Step 2



- Remove the two 3mm Phillips #000 screws under the AV-out digital flap.
- Remove the two 3 mm Phillips #000 screws from the side of the camera.

Step 3



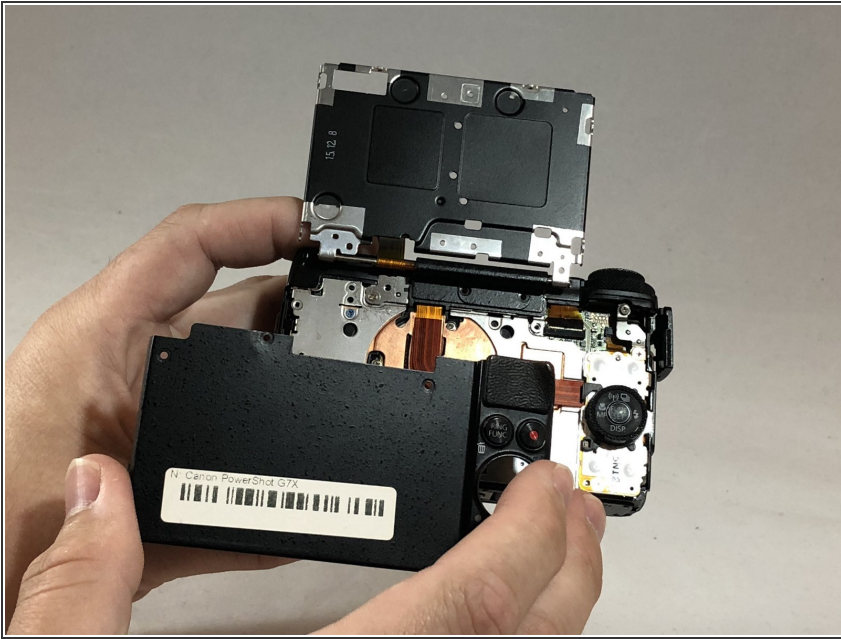
- Remove the two 3 mm Phillips #000 screws on the side of camera with the flash toggle.

Step 4



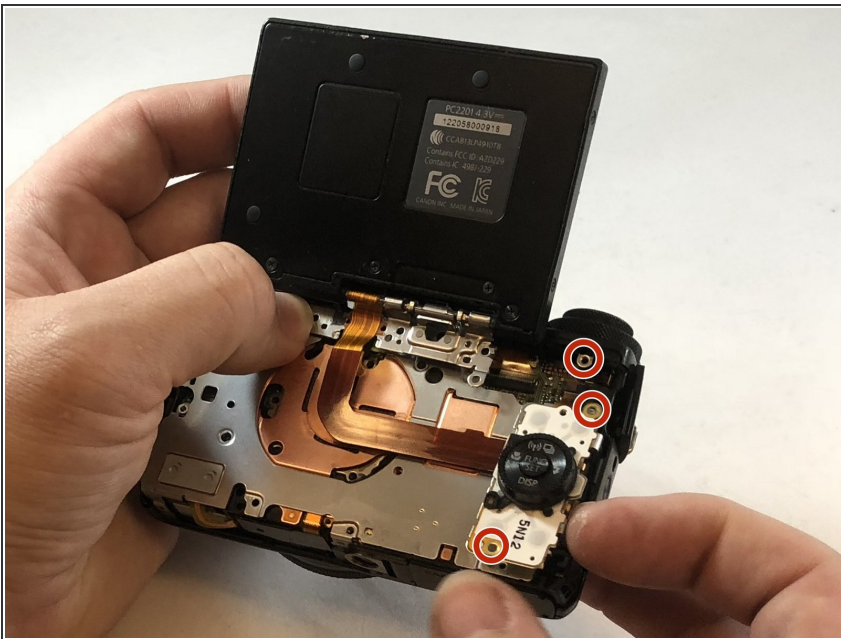
- Remove the four 4 mm Phillips #000 screws from the plate on the bottom of the camera.

Step 5



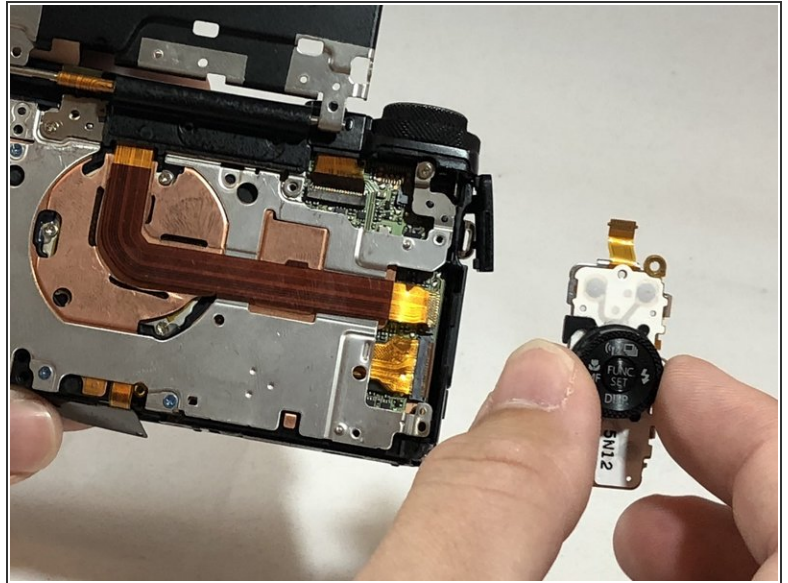
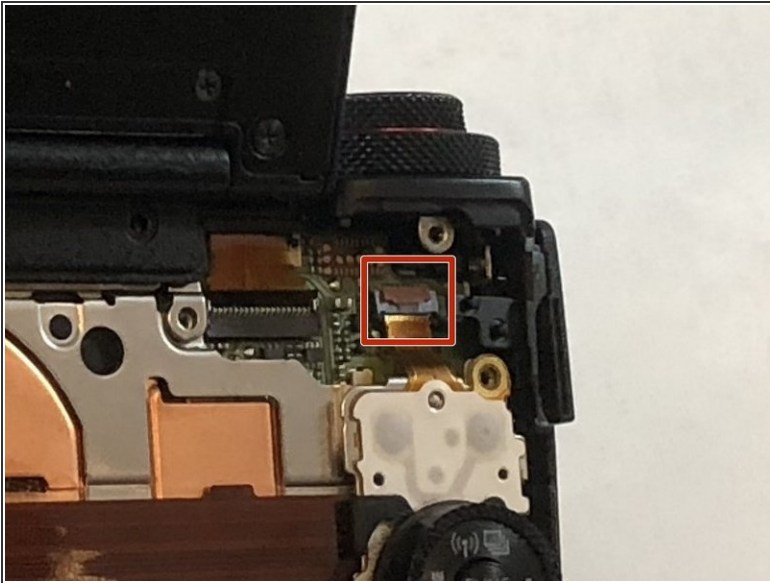
- Remove the back plate.

Step 6



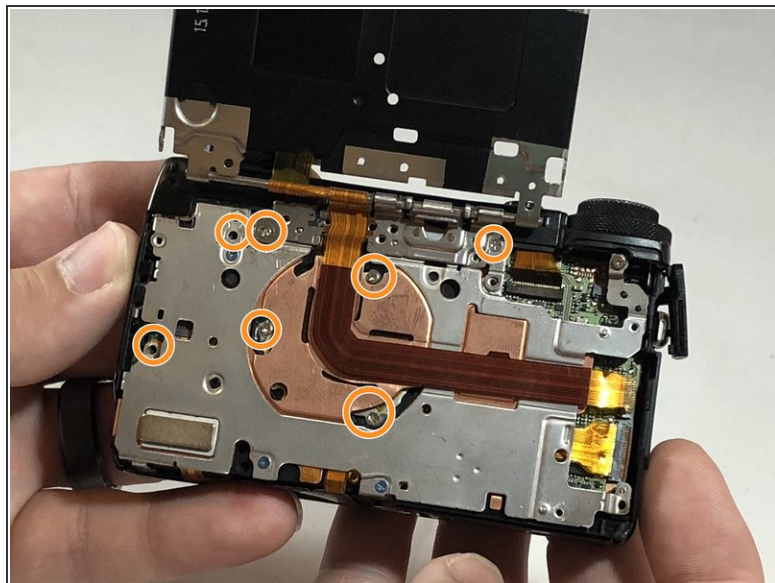
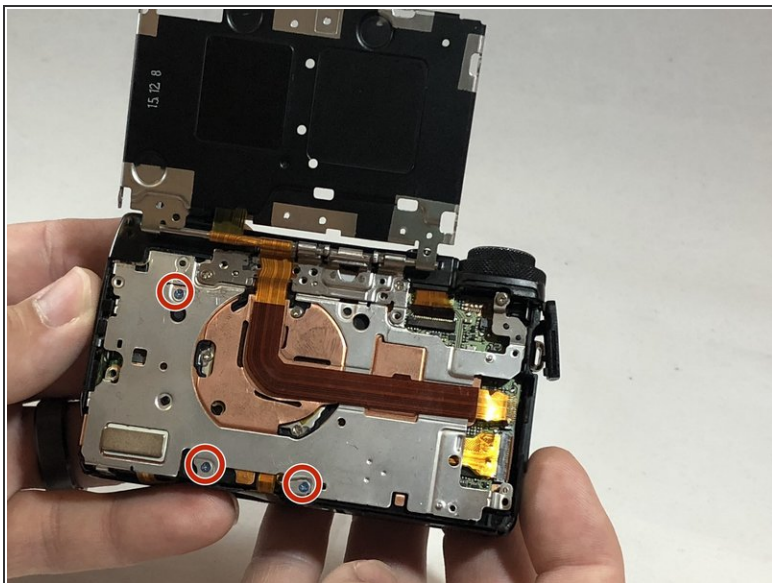
- Remove the three 3 mm Phillips #000 screws around the dial.

Step 7



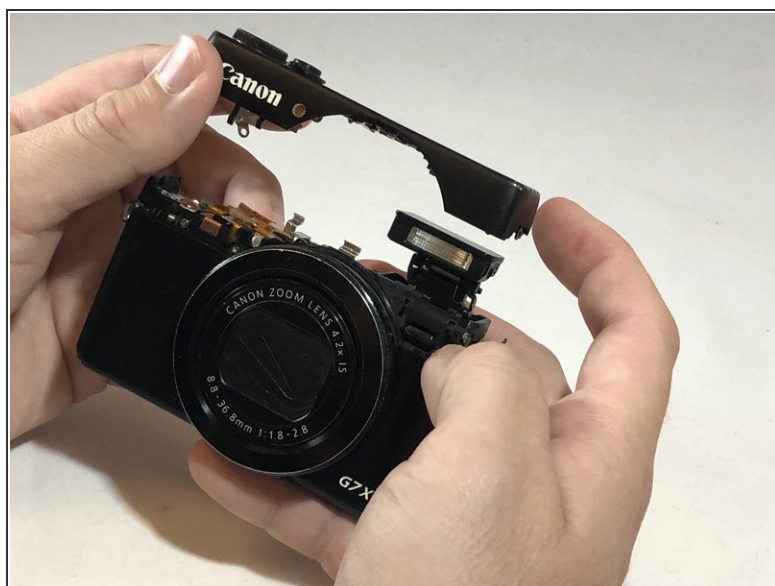
- Using the nylon spudger, gently lift the ZIF tab.
- Disconnect the ribbon cable that connects the dial to the motherboard.
- Remove the dial from the device.

Step 8 — Flash



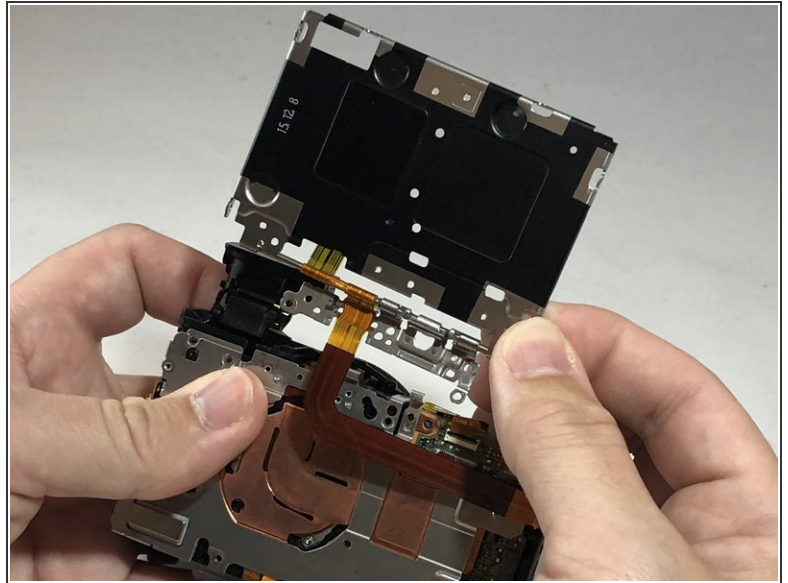
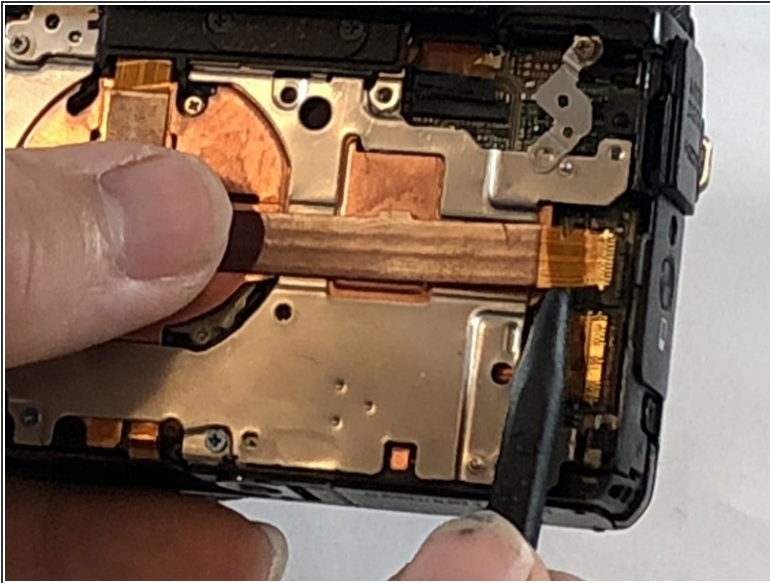
- Remove the three, blue 5 mm Phillips screws from the back plate.
- Remove seven 2 mm Phillips #000 screws.

Step 9



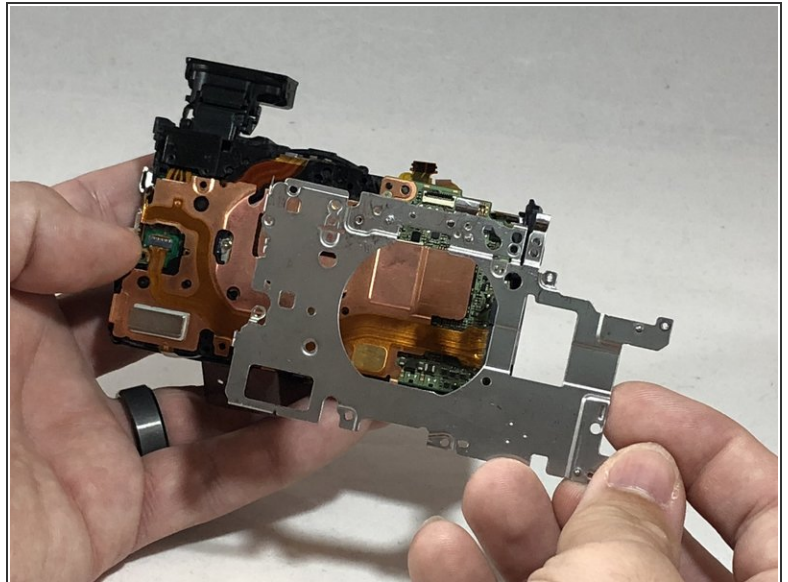
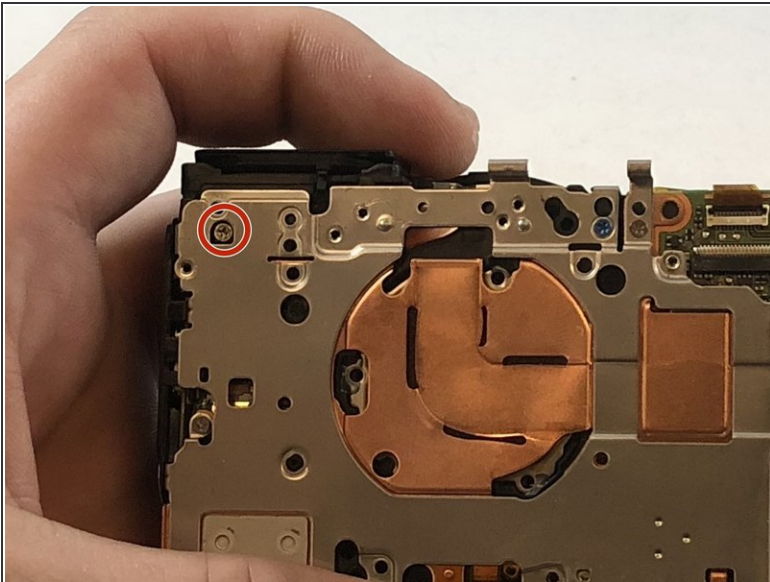
- While using the plastic opening tool, gently pry the top plate off the camera.

Step 10



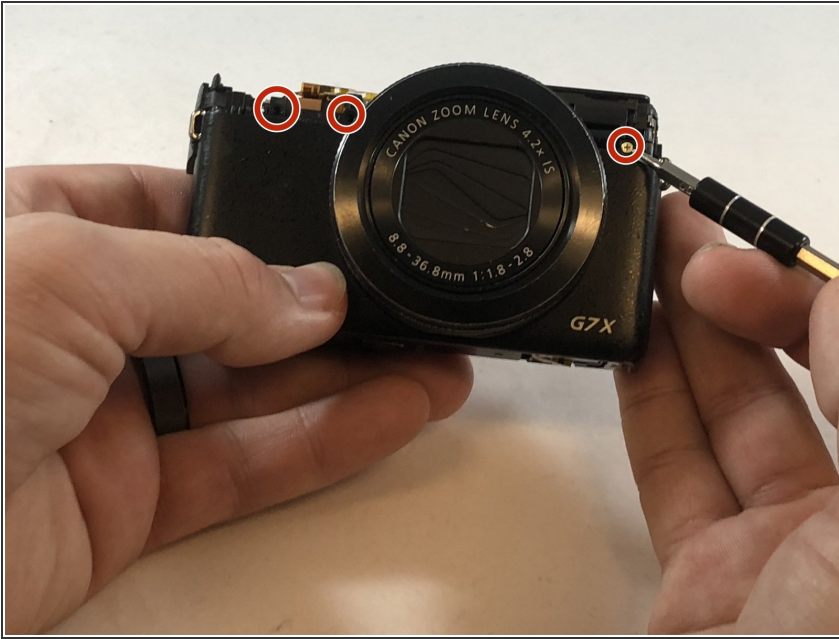
- Using the black nylon spudger, gently lift the ribbon cable connected to the LCD screen housing until it comes out then remove the housing.

Step 11



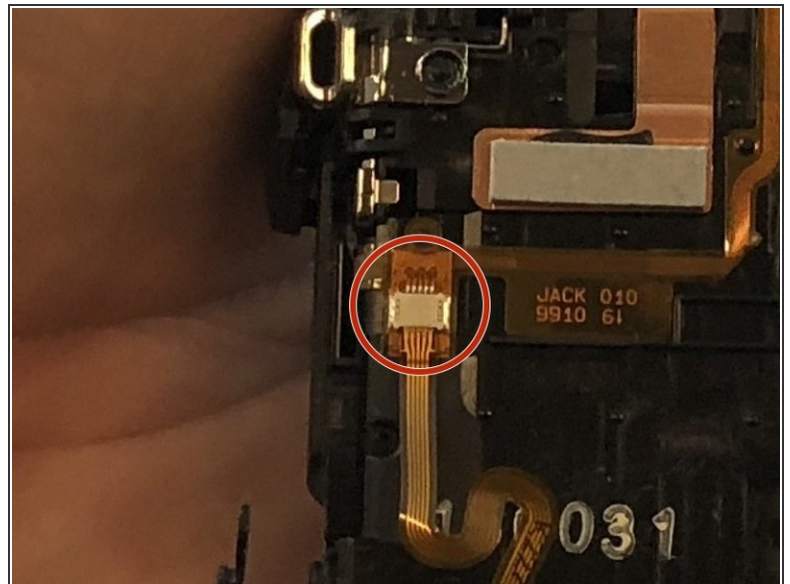
- Remove the 2 mm Phillips #000 screw underneath the top plate.
- Remove silver plate.

Step 12



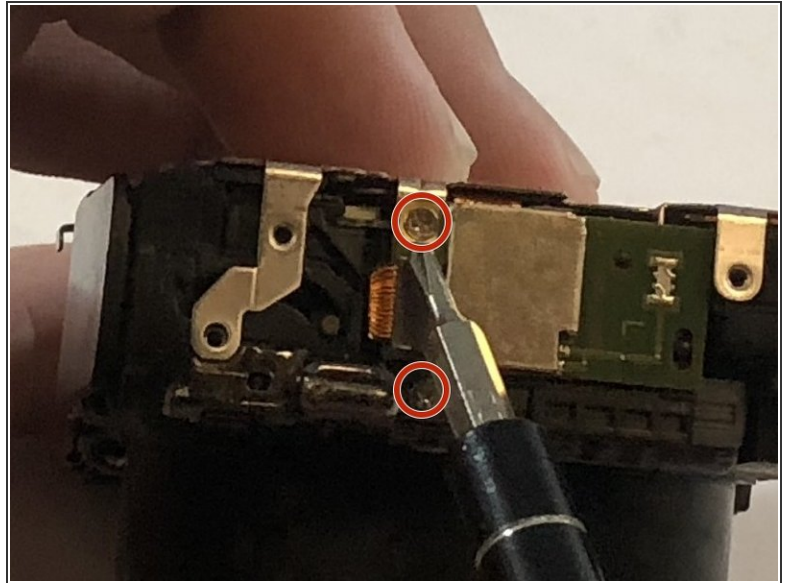
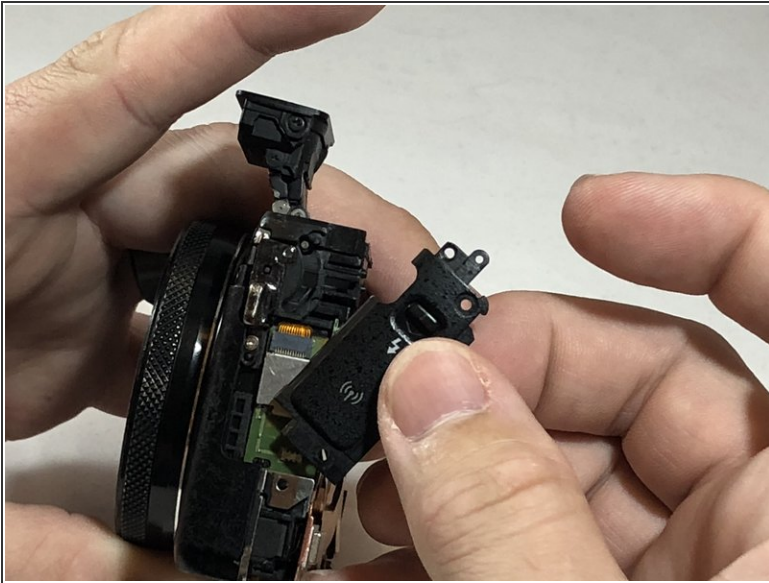
- Take the Phillips #000 and remove the three 5 mm screws from the front plate.

Step 13



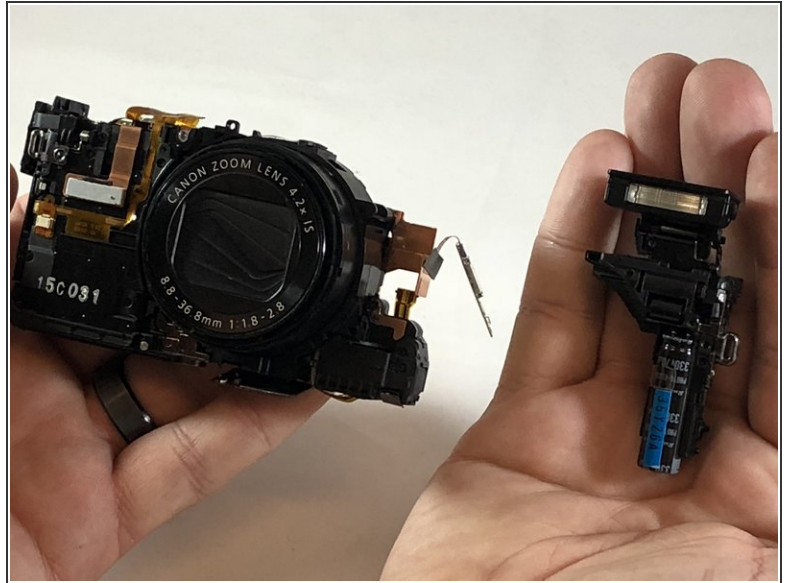
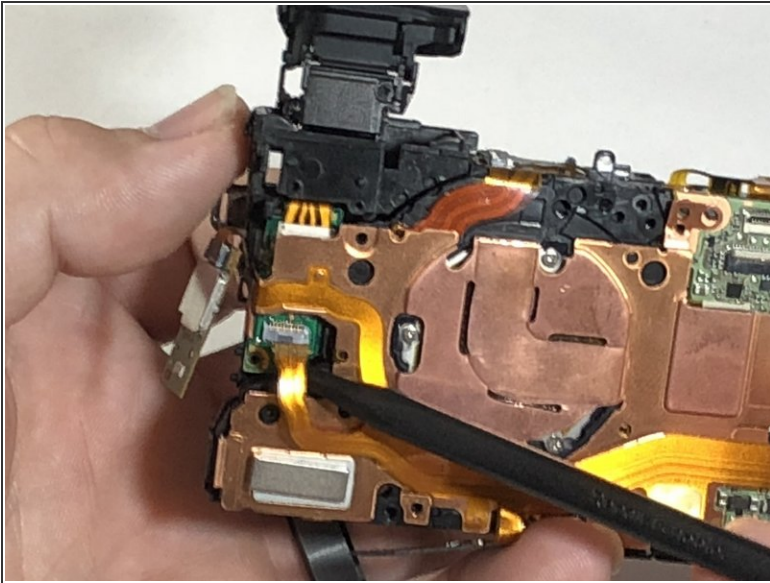
- Using the spudger, gently lift the ribbon cable from underneath the front plate.
- Remove the front plate.

Step 14



- Remove flash toggle plate.
- Remove the 2mm Phillips #000 screws under the flash toggle.

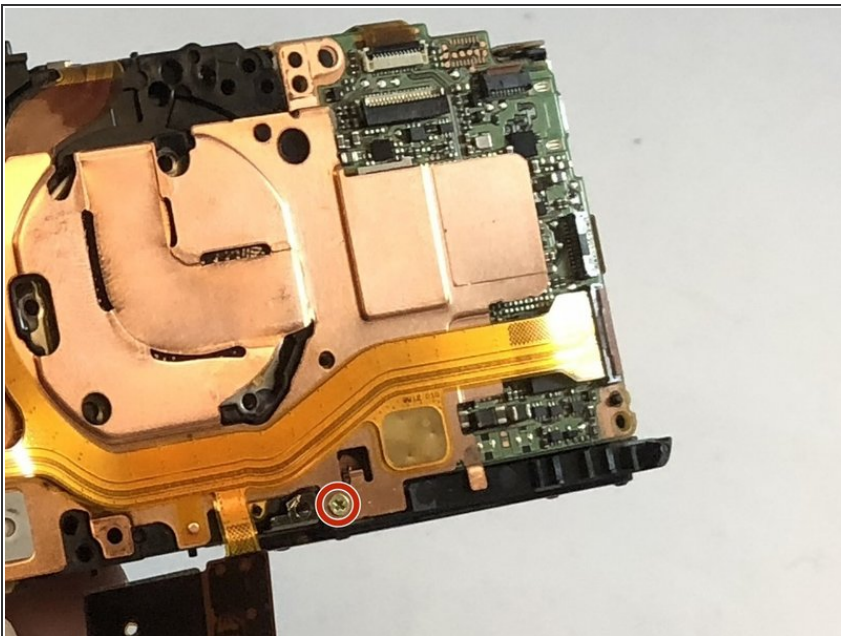
Step 15



⚠ Flash contains charged capacitor. Shock hazard.

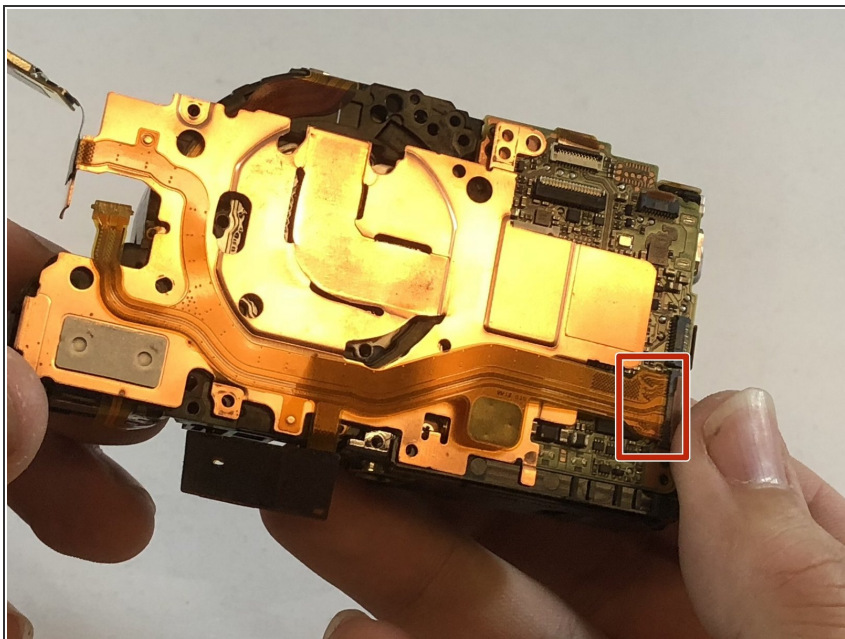
- Using the black nylon spudger, gently lift the ribbon cable that connects the flash to motherboard and remove the flash from the device.

Step 16 — Lens



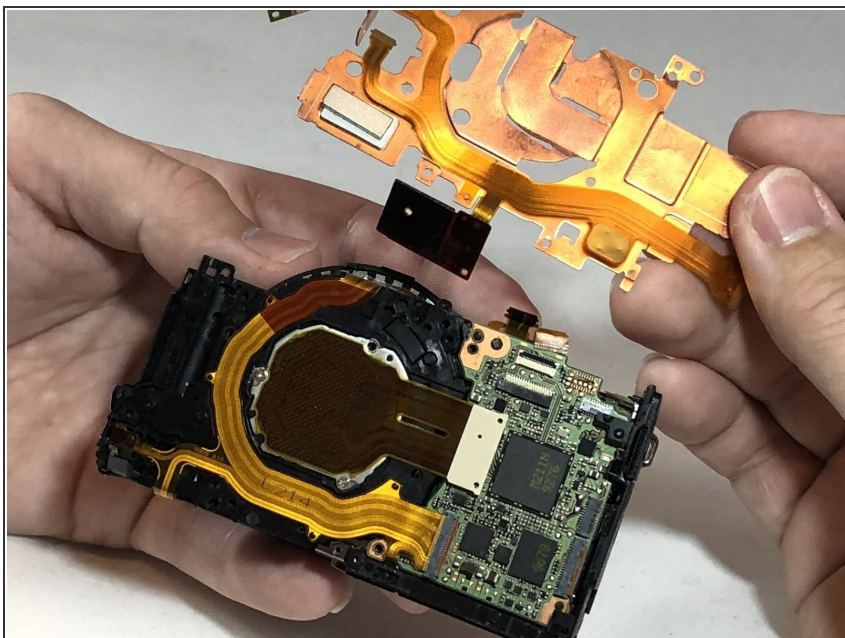
- Remove the 5 mm Phillips #000 screw from the copper plate.

Step 17



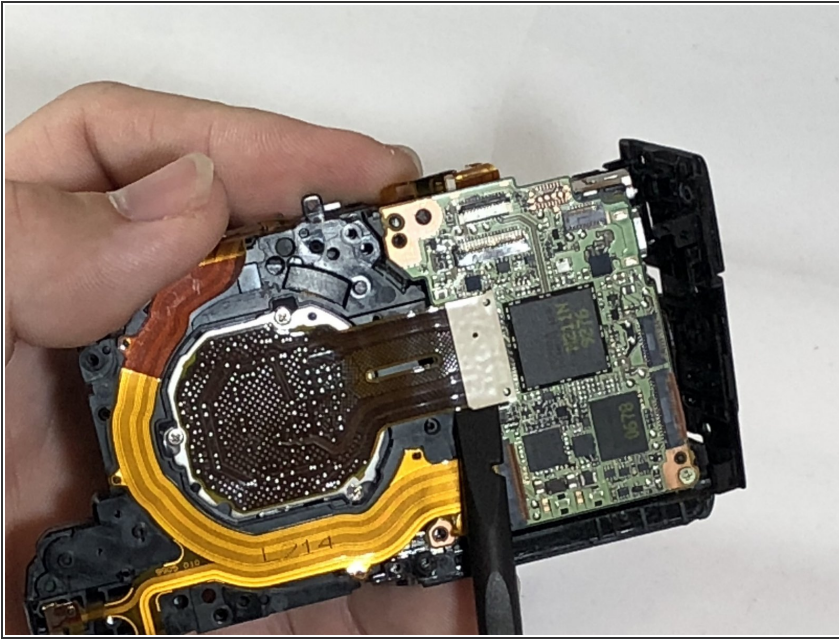
- Using the black nylon spudger, lift the ribbon cable gently until it comes out.

Step 18



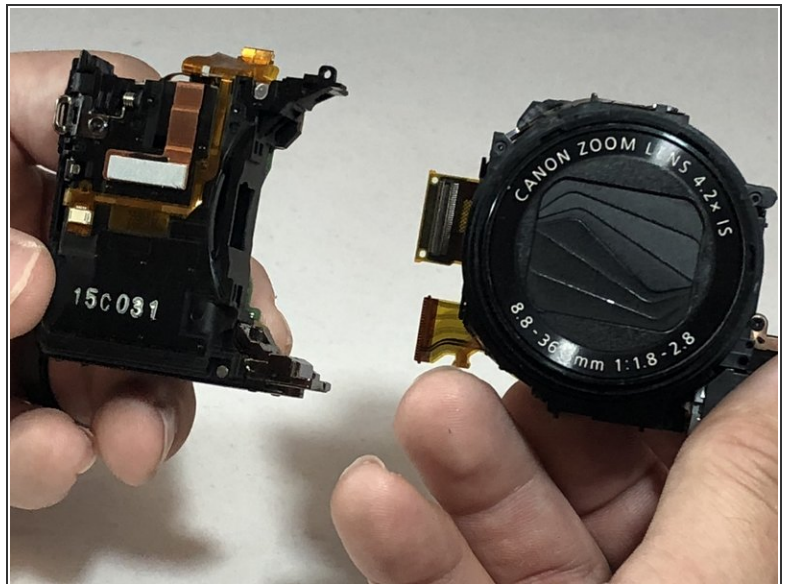
- Remove the copper plate to reveal connections to the lens.

Step 19



- Using the black nylon spudger, lift gently on the pin connector until it comes off.

Step 20



- Using the spudger, gently lift on the ribbon cable until it comes out.
- Separate the lens from the motherboard.

To reassemble your device, follow these instructions in reverse order.