



Keurig 2.0-400 LCD Screen Replacement

After reading this guide, you will be able to replace the LCD screen that displays the information about the coffee being made.

Written By: Alec Jamosmos



INTRODUCTION

In this guide, you will replace the LCD screen. This is necessary if the screen is faulty and does not display information properly.



TOOLS:

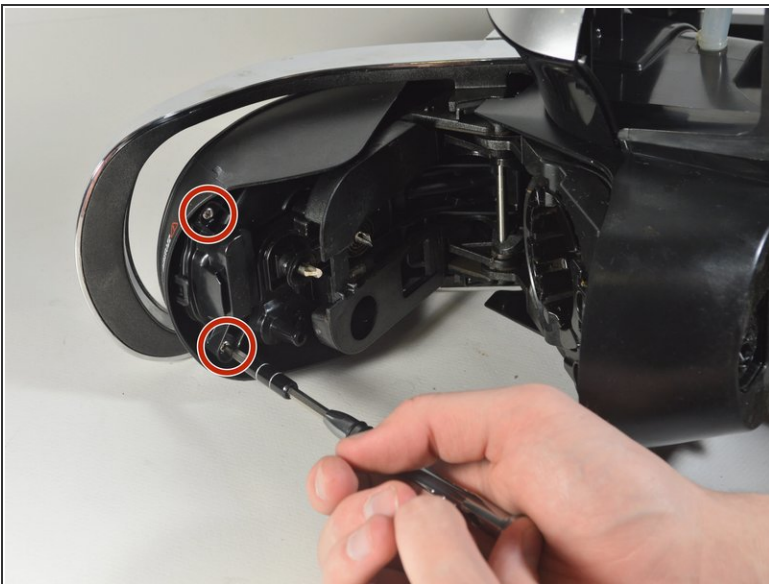
- [Metal Spudger](#) (1)
 - [Phillips #1 Screwdriver](#) (1)
-

Step 1 — LCD Screen



- Open the K-Cup Chamber Housing Lid by lifting up the silver handle below the LCD screen.
- ⓘ This is the part of the brewer you open to place a K-Cup inside.

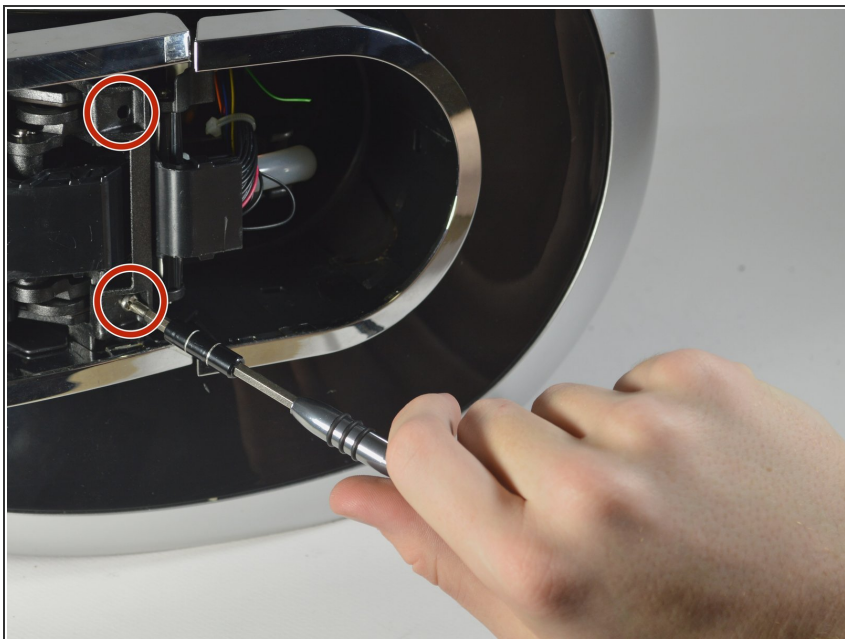
Step 2



- Place the Keurig on its side.
- Remove the two 140mm screws located on the underside of the Chamber Lid using the Phillips #1 screwdriver.
- Remove the top black housing that surrounds the screen.

This document was generated on 2021-02-07 06:34:24 AM (MST).

Step 3



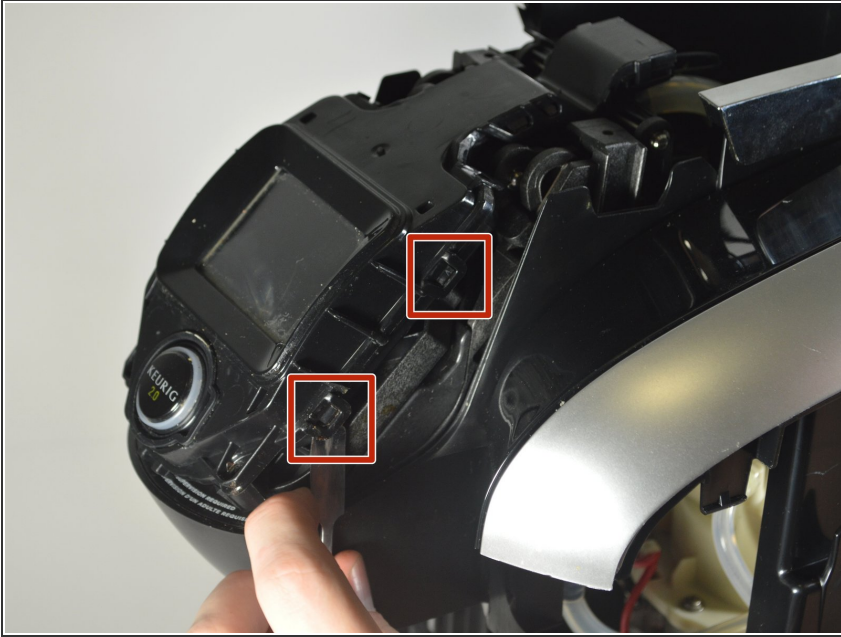
- Using the Phillips #1 screwdriver, remove the two 140mm screws connecting the silver handle to the top of the Keurig.

Step 4



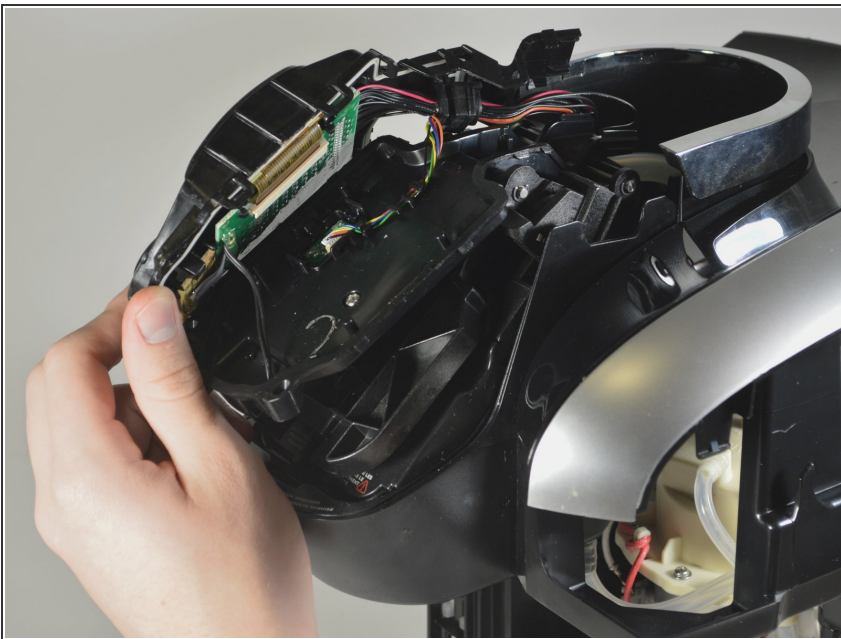
- Pull out the front silver handle from the top of the brewer.
- ⓘ This will further expose the LCD screen.

Step 5



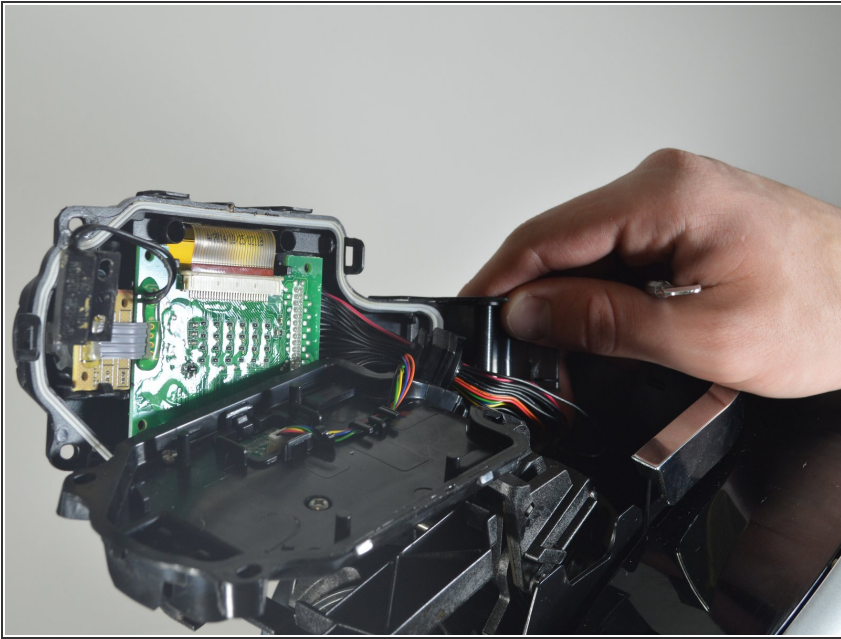
- Using the metal spudger, pry open the snaps holding the LCD screen panel to the brewer, just enough for the panel to pop loose.
- ⚠ Warning: These snaps are very delicate and can easily be broken. Practice caution as you perform this step.

Step 6



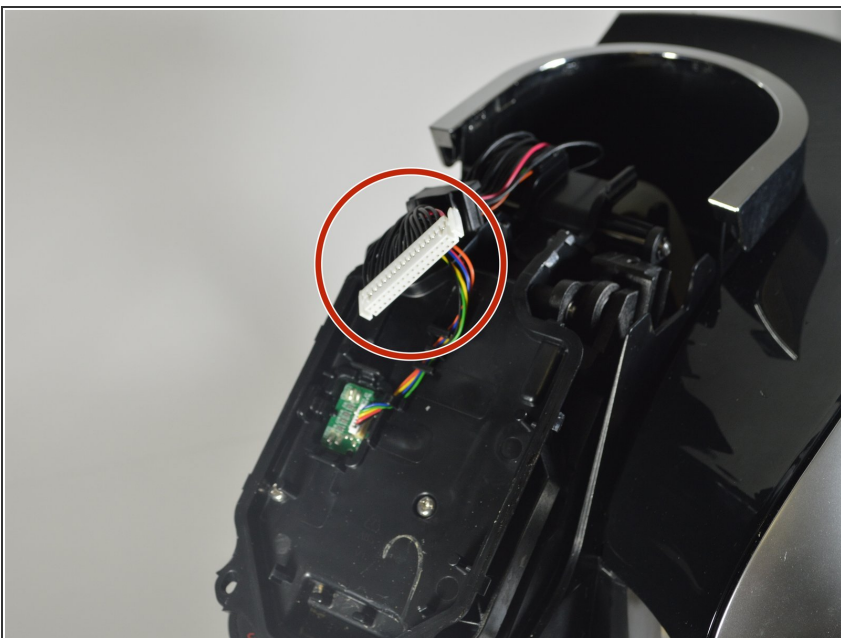
- Remove the top black housing by lifting it up.
- ⓘ This will expose the frame of the Keurig connecting to the LCD screen.

Step 7



- Remove the black latch with the black wire connecting the front end of the panel to the frame.
- ⓘ The front end of the panel will now be free.

Step 8



- On the bottom of the panel, remove the white tab that connects the wires of the circuit board to the LCD screen
 - To remove the tab, squeeze in on the sides of it as you pull it out.
- Remove the touch screen panel from your device.

To reassemble your device, follow these instructions in reverse order.