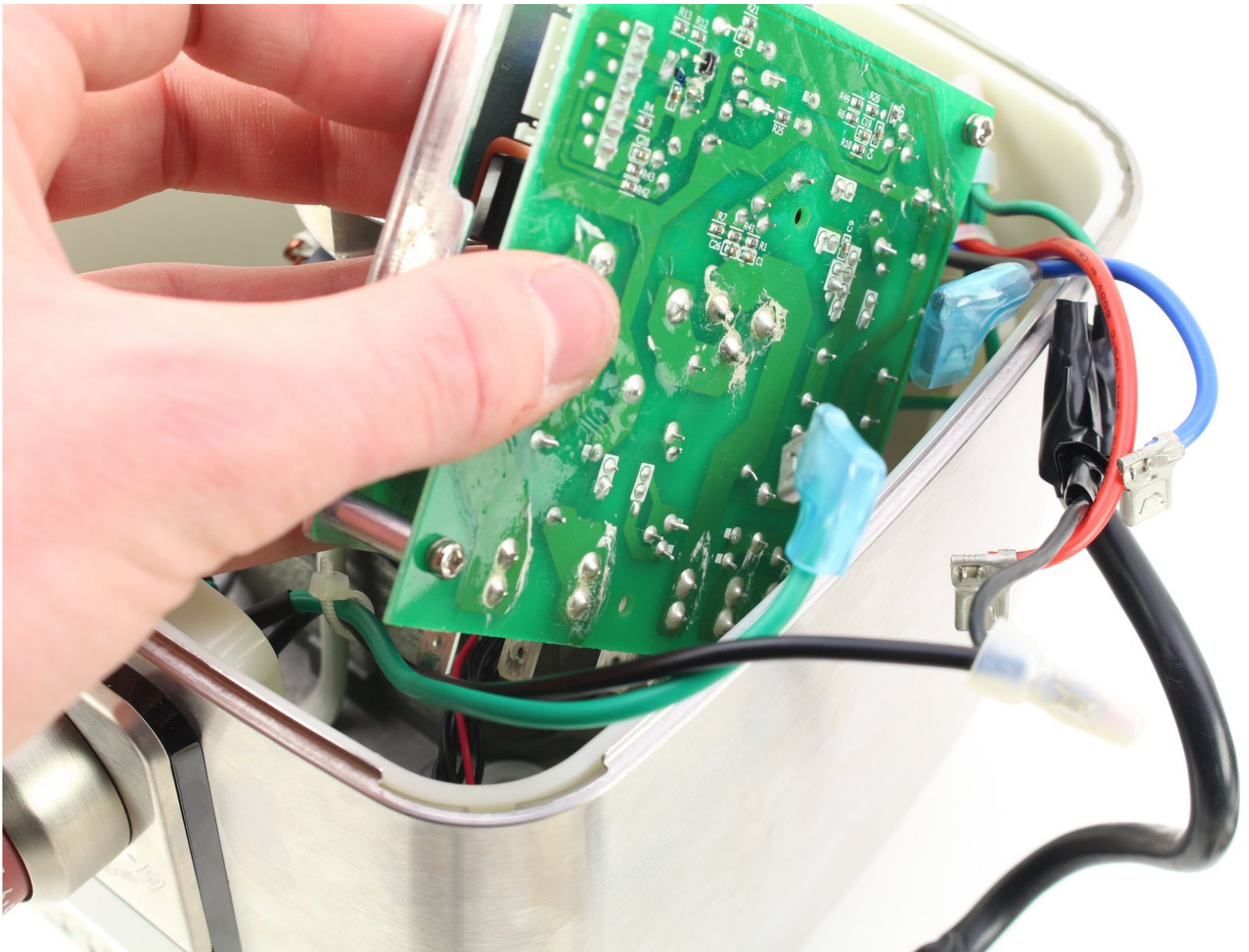




# Wolf Gourmet WGBL100S Control Board Replacement

This guide will assist you in removing the control panel of the Wolf Gourmet WGBL100S.

Written By: Cole Gillespie



## INTRODUCTION

If your blender does not operate, try opening it as per this guide and checking the wires on the control board. If that yields no results, consider replacing the board if possible.



### TOOLS:

- [Phillips #2 Screwdriver](#) (1)
- [Metal Spudger](#) (1)



### PARTS:

- [Wolf Blender Control Board](#) (1)

## Step 1 — Control Board



- Flip the base of the blender upside-down.
- Remove the four 1/2" long screws in the corners of the base using a Phillips #2 screwdriver.

## Step 2



- Using the metal spudger, pry off one half of each rubber foot.
- ⓘ Note that one side of the foot is glued down; pry off the other side.

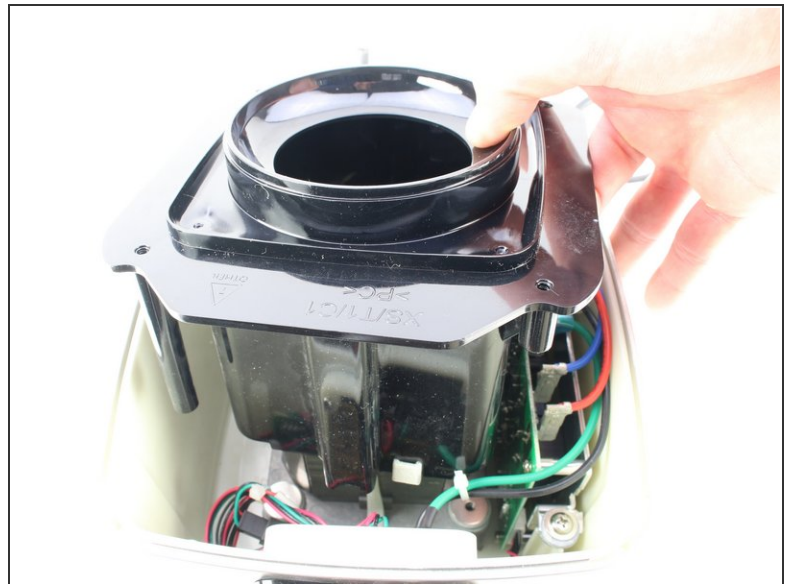
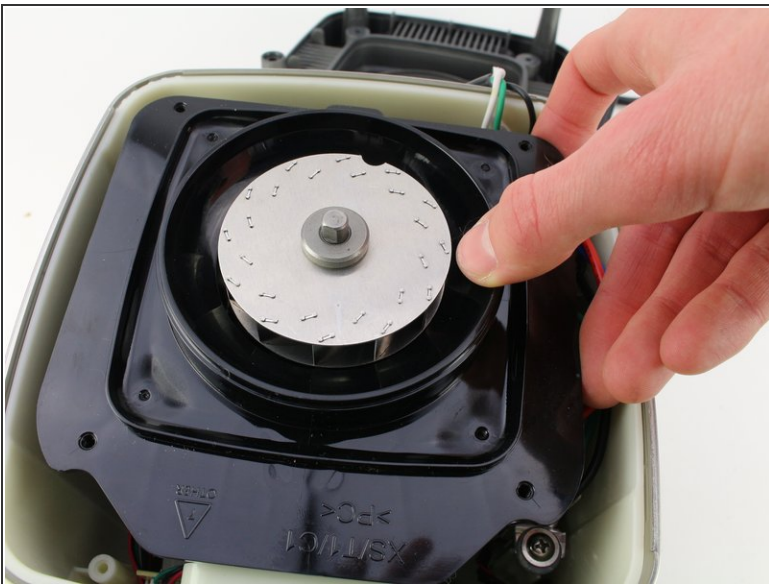


### Step 3



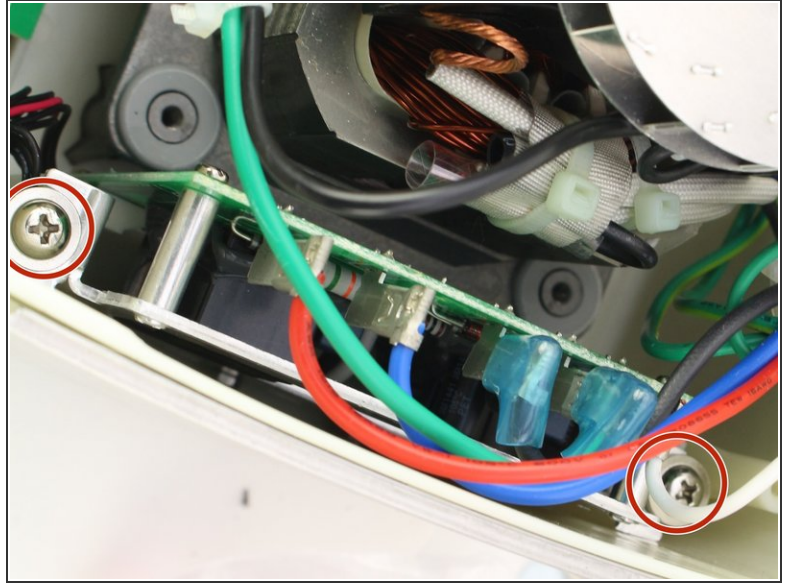
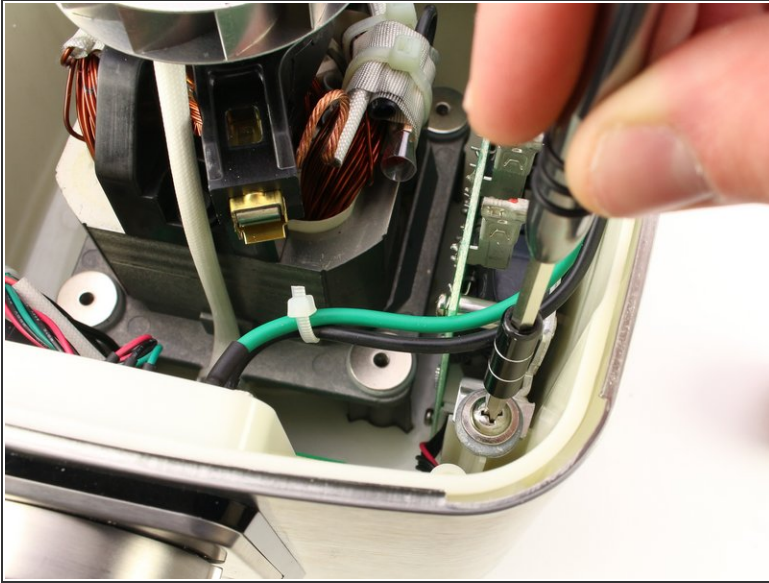
- Using the same screwdriver, remove the next four 1/2" long screws in the holes under the feet.
- Pull the base off of the blender.

### Step 4



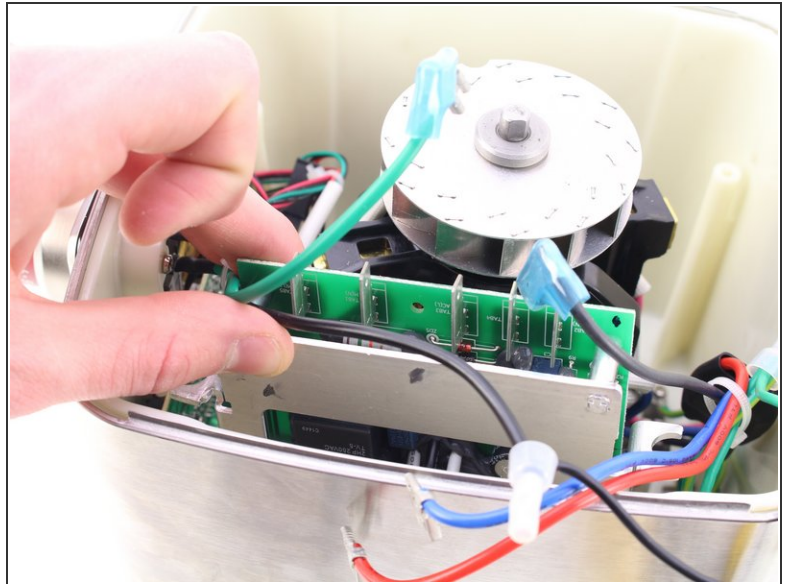
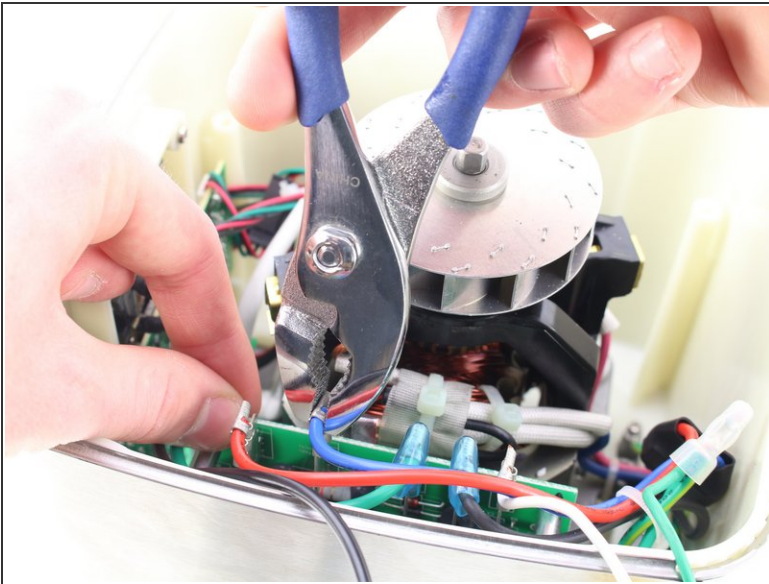
- Pull off the plastic housing.

## Step 5



- Using the same Phillips #2 screwdriver, remove the two 3/4" long screws holding the control board in place.

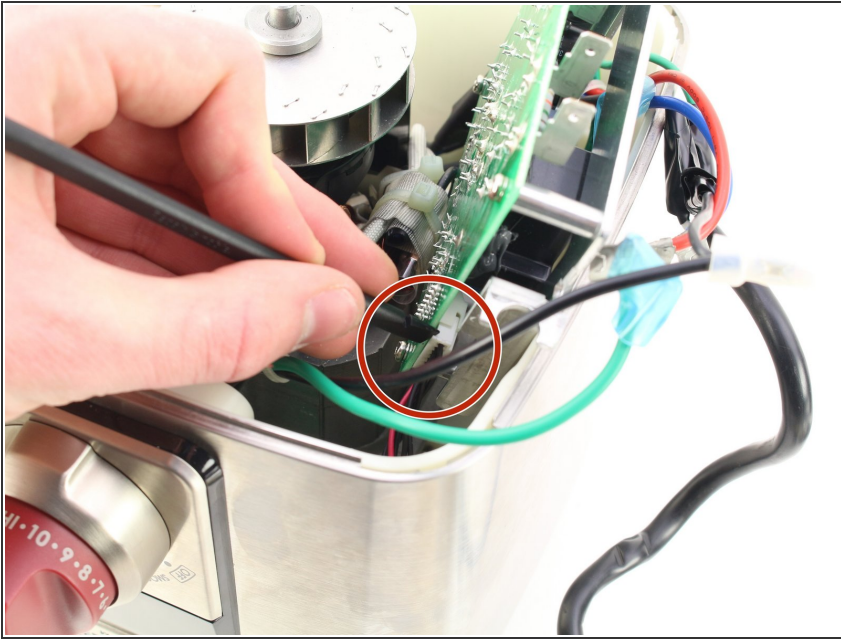
## Step 6



- Using pliers, pull off all the connectors on the top.



## Step 7



- Pull or pry off the last connector block, then remove the control board.

To reassemble your device, follow these instructions in reverse order.