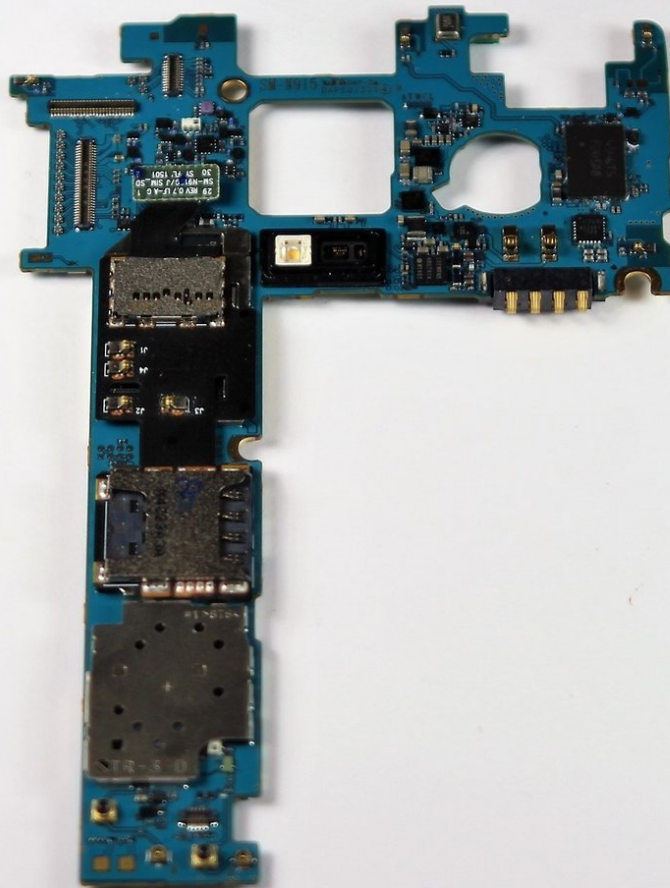




# Samsung Galaxy Note Edge Motherboard Replacement

This is a step by step guide on how to remove and replace the logic board in the Samsung Galaxy Note Edge.

Written By: Matt Clark



---

## INTRODUCTION

The phones motherboard is the hub of all activity on the phone. It is a very important component, and is essential for the phone to operate.

---

### TOOLS:

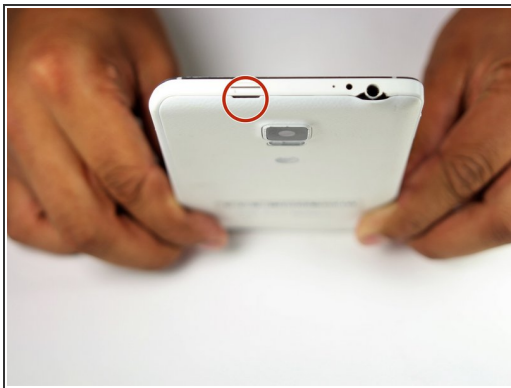
- [Spudger](#) (1)
  - [Phillips #000 Screwdriver](#) (1)
-

## Step 1 — Battery



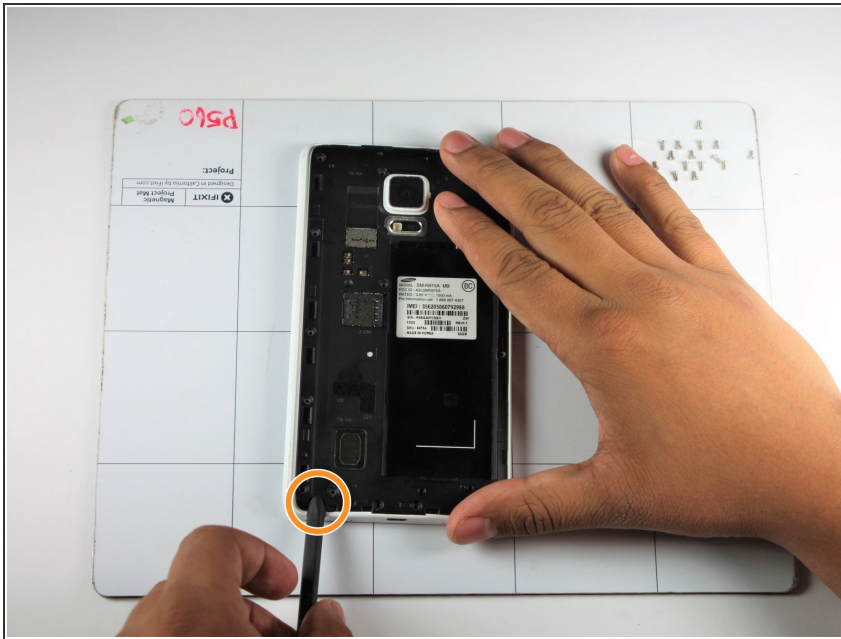
- Power down your device and make sure that it is turned off.
- Place the phone with the screen facing down on a clean flat surface.

## Step 2



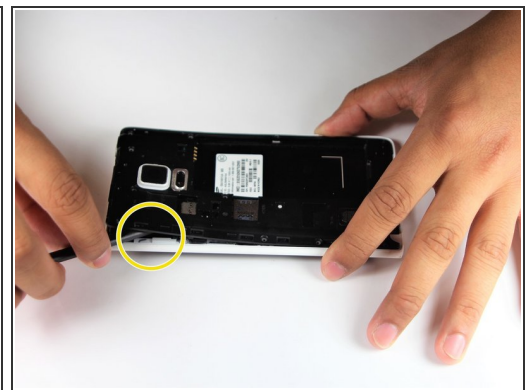
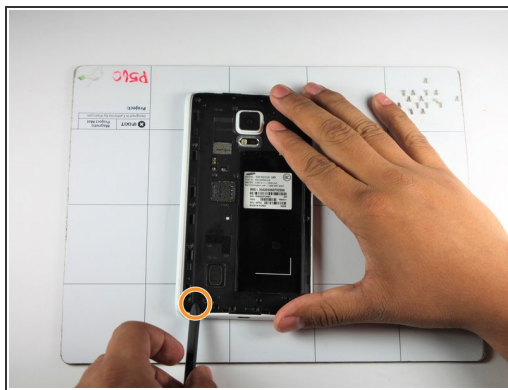
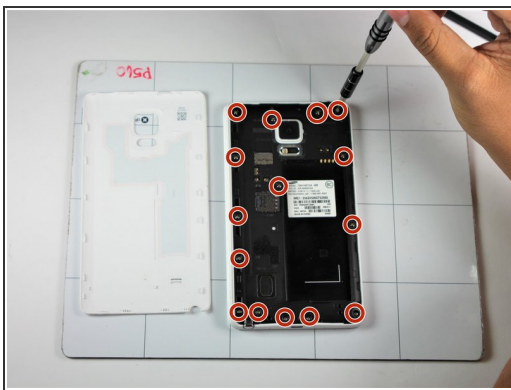
- Use your Supdger to remove the back cover of the phone using notch located in the top left corner of the phone.
- Remove battery by using your Supdger on the notch located directly underneath battery location.
- ⓘ During the creation of this guide, we did not have access to a battery in our device.

## Step 3 — Motherboard



- Remove the SIM Card from the SIM Card holder by gently sliding the SIM Card horizontally.
- Remove the stylus from the stylus holder.

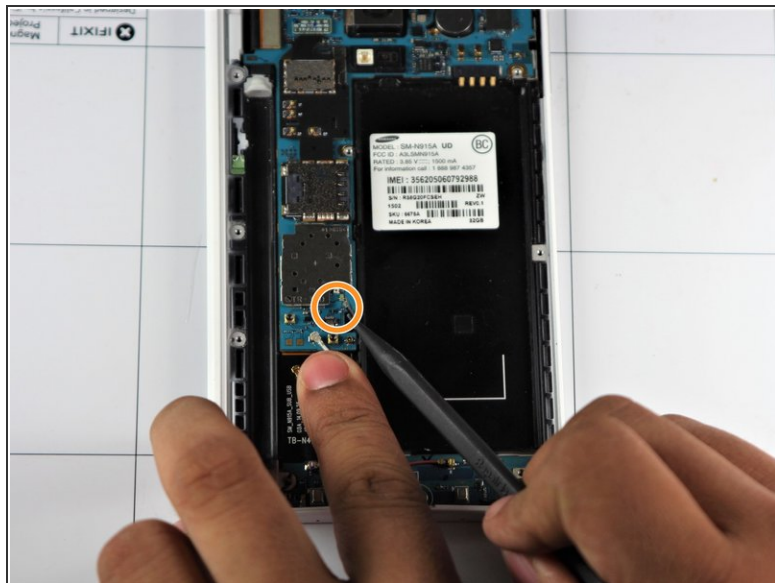
## Step 4



- Using a Phillips #000 Screwdriver, remove the fifteen 4mm screws that secure the rear chassis.
- Insert your spudger into the stylus socket and pry the midframe from the phone.
- Move the spudger around edge of phone, carefully prying the midframe from the phone until midframe is entirely separated.



## Step 5



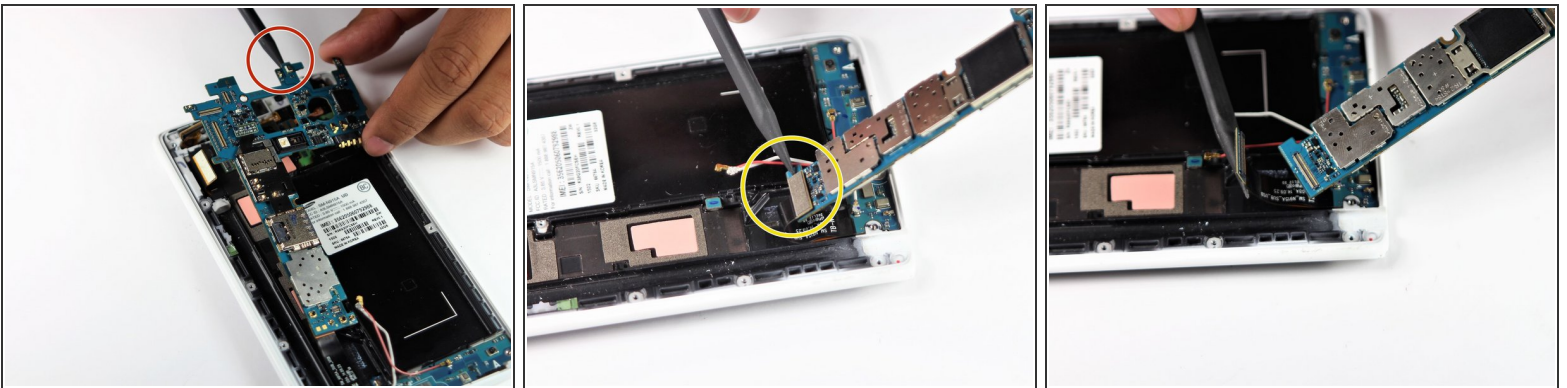
- With the pointed end of your spudger, disconnect the two wires (pink and white) located near the bottom of the phone.
- Using pointed end of your spudger, disconnect the finger print scanner cable- it is located directly above the pink and white cables.

## Step 6



- Using your Spudger's pointed end, pry off the following leads that connect these parts to the logic board in the top left hand corner:
  - Front Facing Camera
  - AMOLED Display Screen
  - AMOLED Capacitive Screen

## Step 7



- At the top end, gently insert pointed end of spudger underneath the motherboard.
- Lift the motherboard up gently. Disconnect the cable connecting the daughter board. It is attached to the underside of the motherboard.
- Remove the motherboard from the device.

To reassemble your device, follow these instructions in reverse order.