



Toshiba Satellite L855-S5210 LCD Screen Replacement

A quick image guide for disassembling your Toshiba Satellite L855-S5210 for the installation of your replacement LCD.

Written By: Michael Miller





TOOLS:

- [Plastic Cards](#) (1)
 - [precision screw drivers](#) (1)
-

Step 1 — LCD Screen



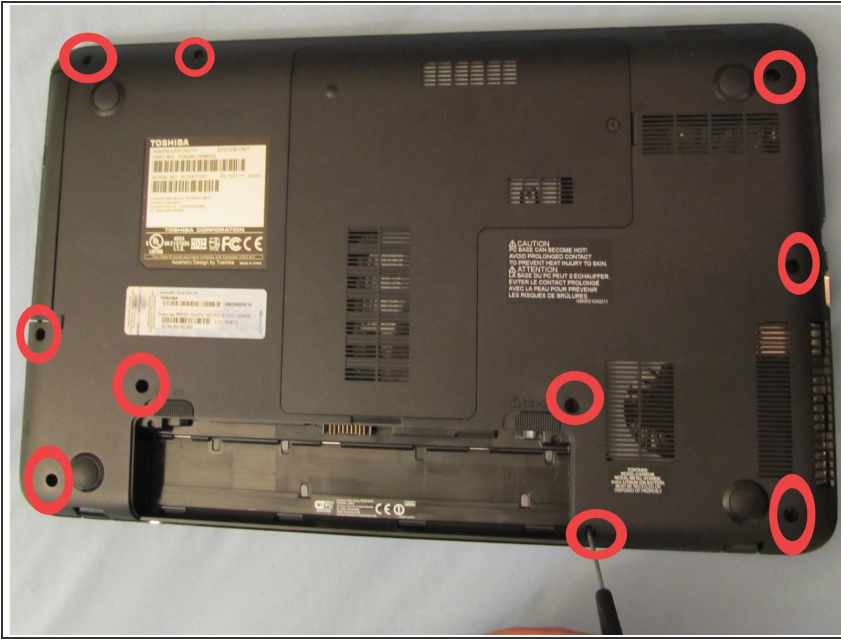
- So, your spouse fell on your computer while taking a nap... let's replace the LCD. I got mine from <http://www.LaptopScreen.com>
- First, here's some tools you might consider using while working. You may also want an old credit card of your choosing to help get inside. More on that later.

Step 2



- Remove the battery by pressing the two slider buttons in the appropriate direction.

Step 3



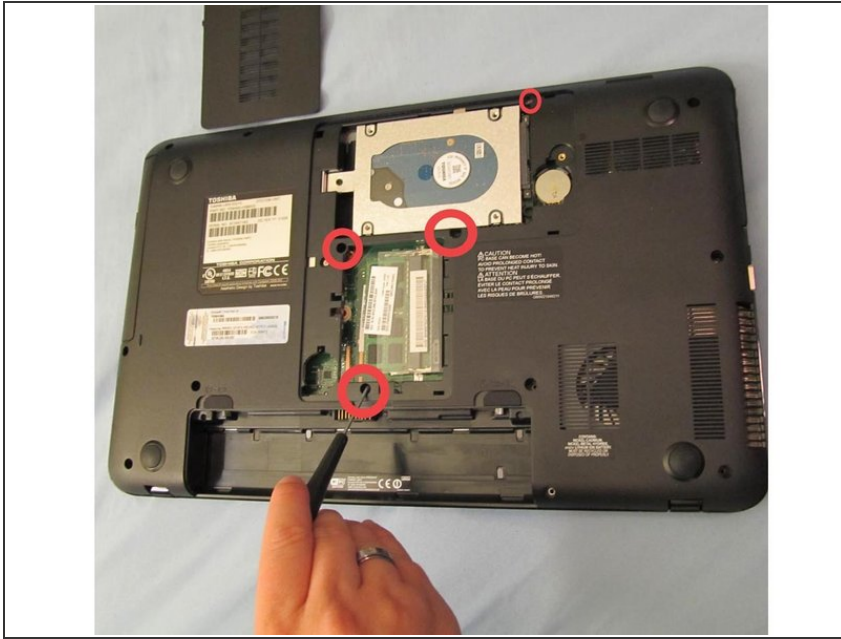
- Next, remove the 10 screws located in the image. They are all on the bottom of the machine.

Step 4



- You might consider using some sort of screw-organizer to make life easier. Be it paper, tape or whatever.
- Use a dry erase marker (or other writing utensil) to mark where each set of screws came from.

Step 5



- Remove the plastic covering that encloses the Hard Drive and RAM. This is done by loosening (not removing) a single screw on the large plastic piece.
- After removal, there are 4 screws under the plastic we need to remove. See the image to locate them all. Place them in your screw organizer.

Step 6



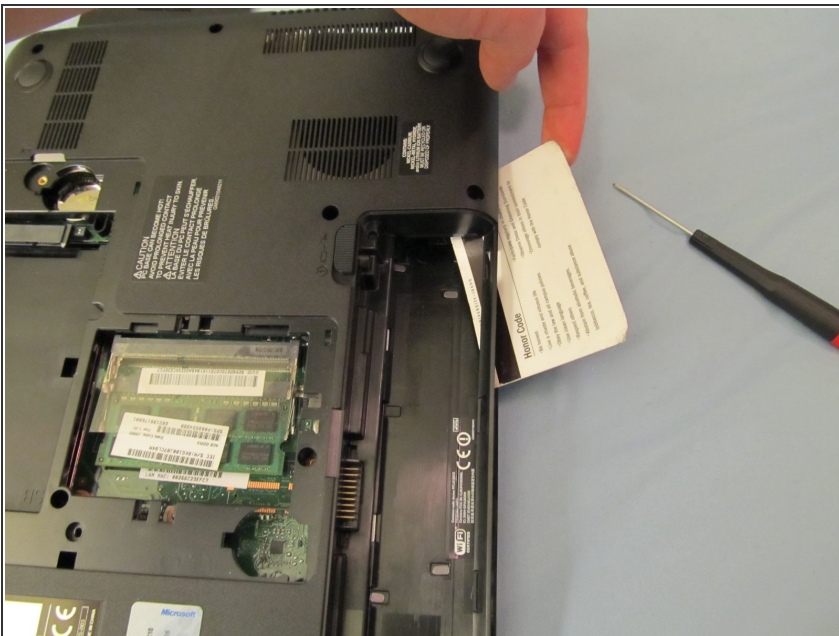
- Next, remove the single screw holding in your DVD drive. After this screw is removed, your DVD drive will slide right out. Remove it.

Step 7



- Next, remove the single screw holding the hard drive in place (it's located on the right).
- After removal of that screw, slide the Hard Drive casing to the right -->, remove.

Step 8



- Slide a credit card all the way around the outer edge of the laptop to help pry the plastic clips open.
- if anything snags, or wont come apart, try twisting the card gently, so as to wedge it open.

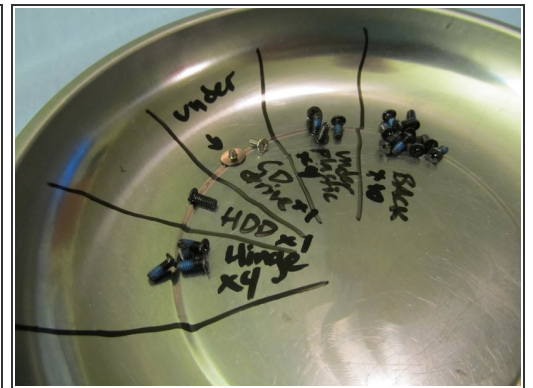
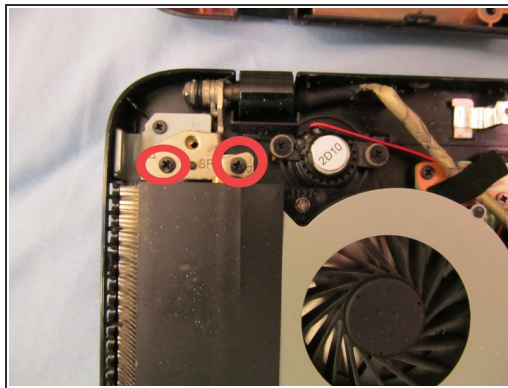
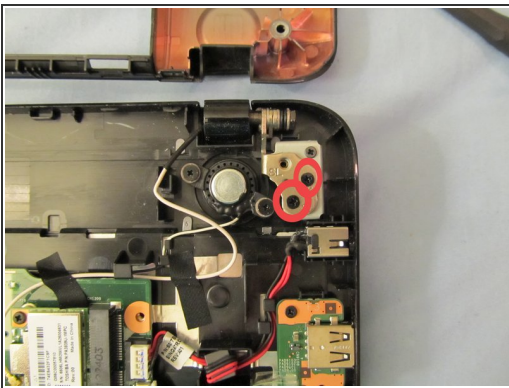
Step 9



i Behold!

i At this point, the LCD is under the motherboard. Interestingly, this is one of the rare builds that has the hinges screwed in upside down.

Step 10



- Two screws on each hinge await for your removal.

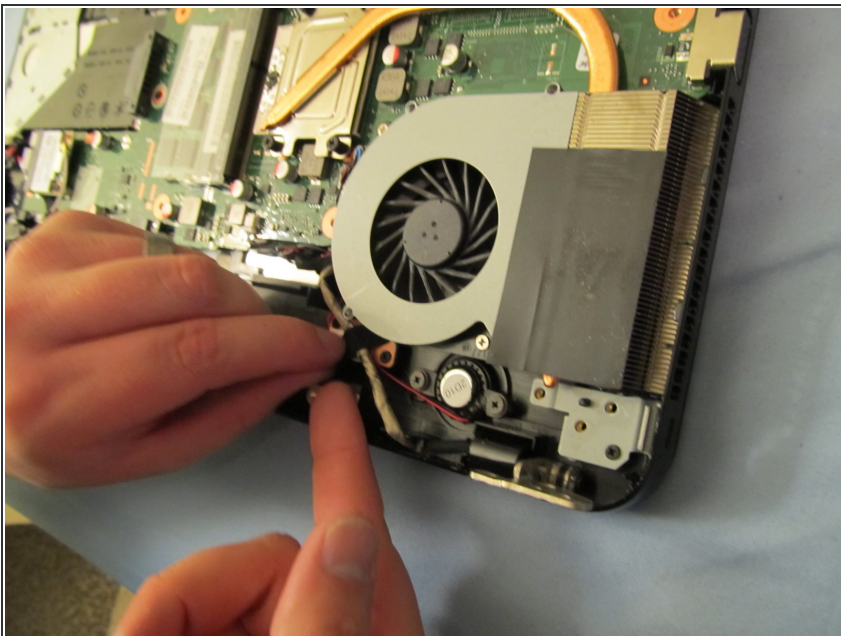
i Note the screw organizer. This is how many screws we've removed. (The one with an arrow pointing to it we did NOT remove in this tutorial. It is located under the DVD drive after the drive is removed. It is not necessary to remove it)

Step 11



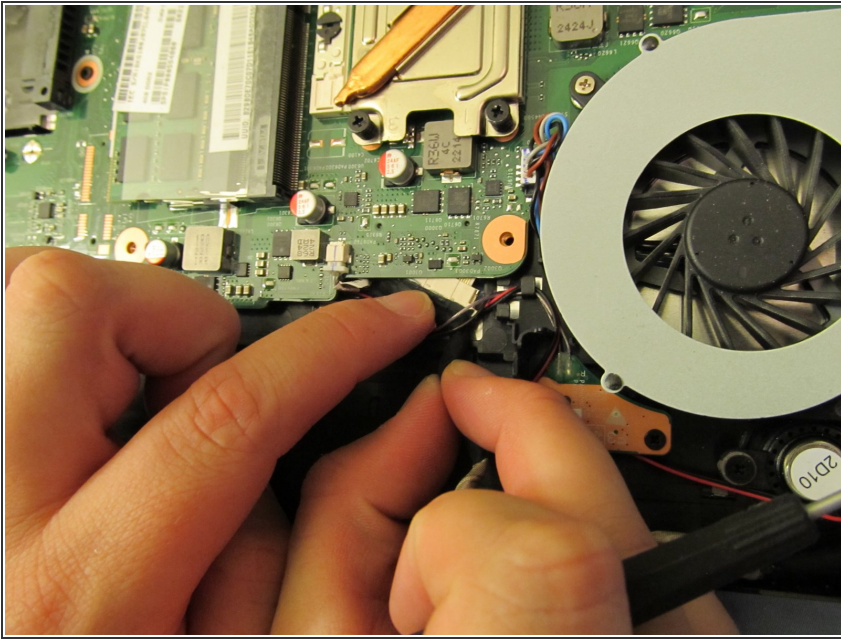
- Open the laptop so that the hinges can move into a vertical position instead of being flush with the screws you just removed.
- Put the laptop back into closed position.

Step 12



- Remove the tape that keeps the LCD cable in place.

Step 13 — Caution!

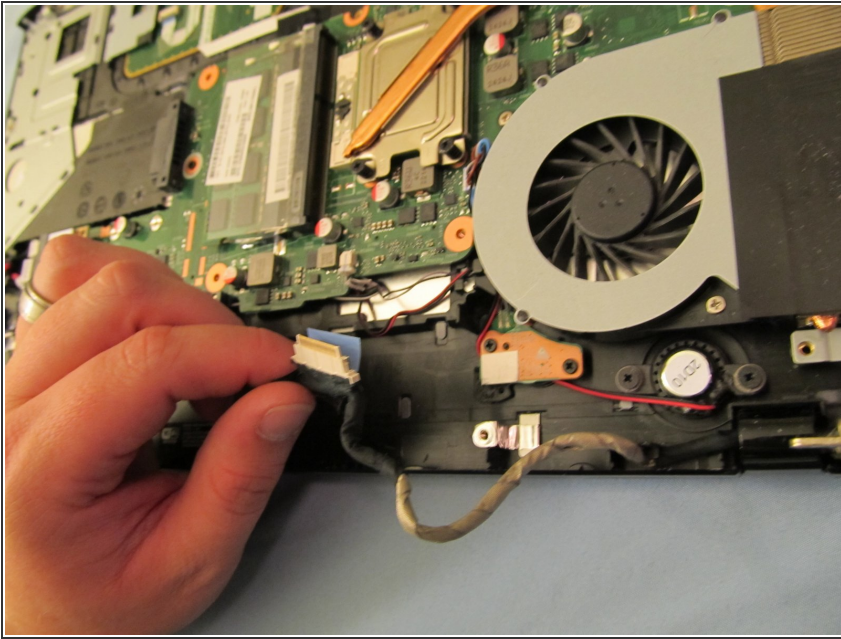


- Carefully tug the LCD cable out from under the motherboard.

⚠ When putting back together, this will be difficult to put back. We had to use a crochet hook to get the leverage needed to put it back in place. DO NOT REMOVE THE MOTHERBOARD TO GET BACK THERE. The Keyboard Cable is 1/2" long underneath, rendering it near impossible to put back. We cussed out Toshiba a few times for the unfriendly structuring.

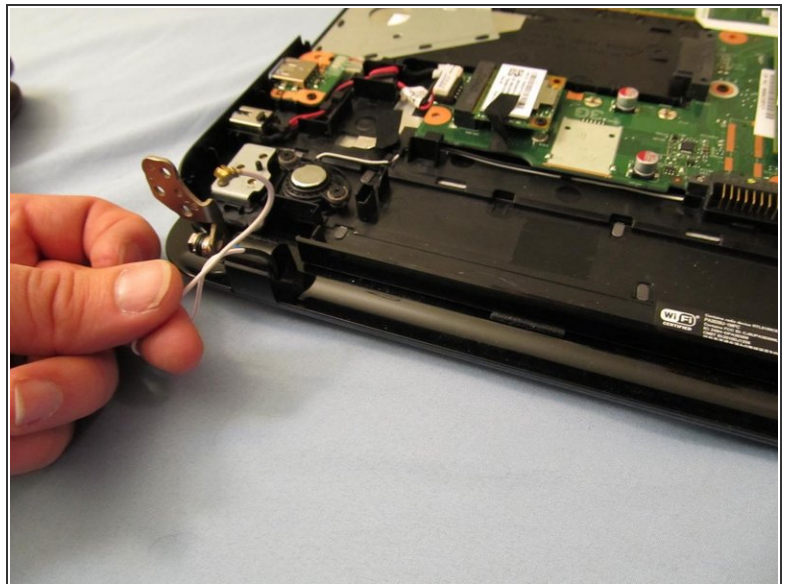
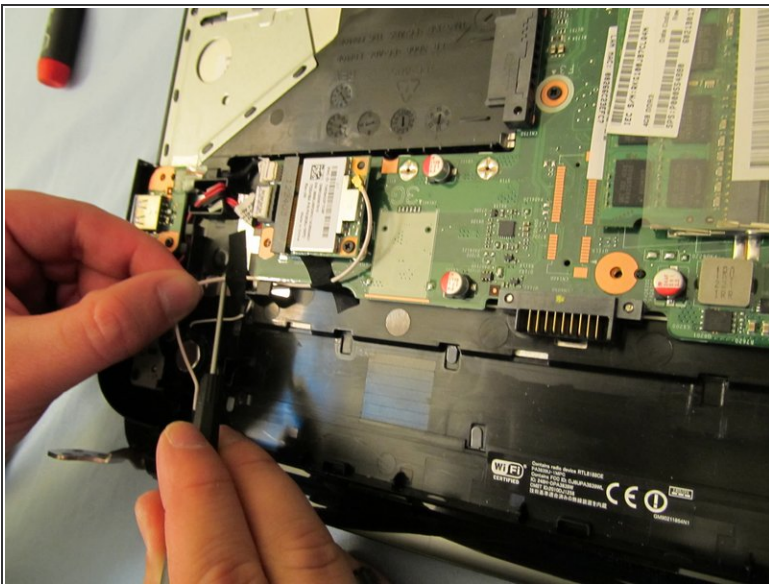
- Make sure that the LCD cable is fully seated before you finish up. Use a light to double check it. I had to take the PC apart 4 times till I found out the cable wasn't in the socket but underneath it.

Step 14



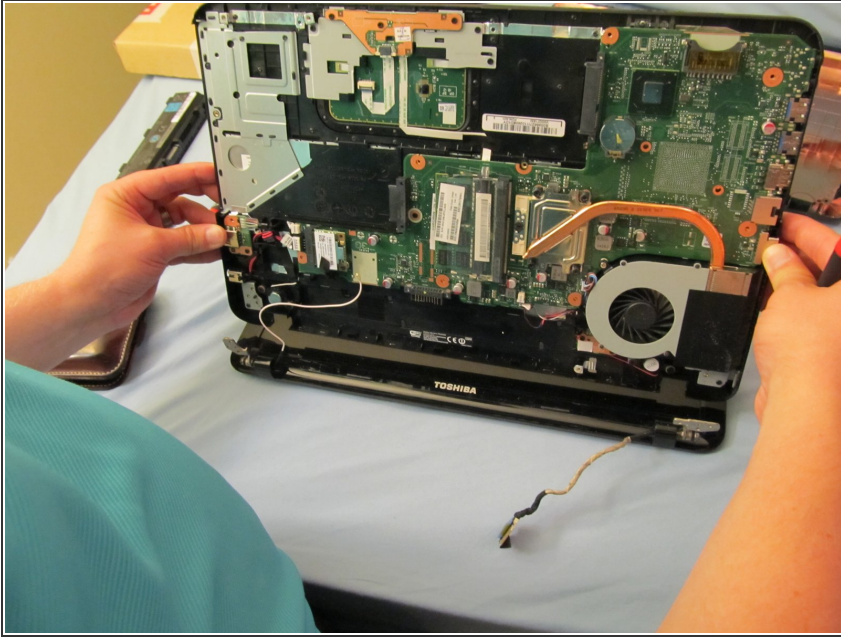
- Behold, the LCD cable removed.

Step 15



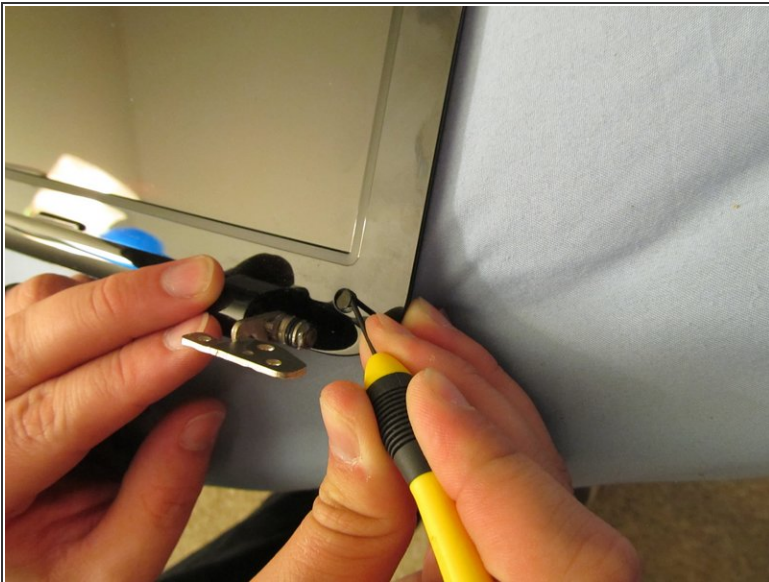
- Remove the wifi cable by unfastening it from the wifi card first, then following the wire. Remove any tape necessary.

Step 16



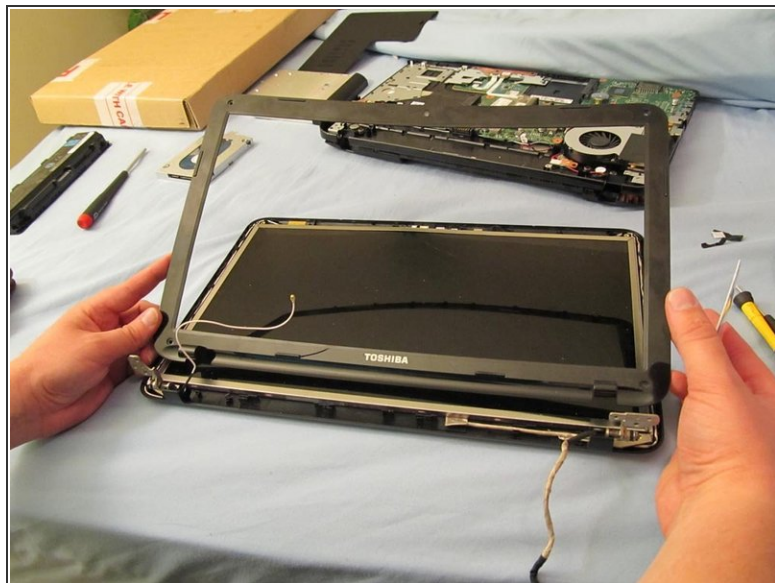
- Open the laptop again, bottom facing you, and slide the motherboard piece away from you. This will disconnect it from the LCD unit we're after.

Step 17



- Carefully use a very small flat-head precision screwdriver to remove the plastic circles guarding the LCD screws we need to get to. Found in corners.
- Remove the screws underneath.

Step 18



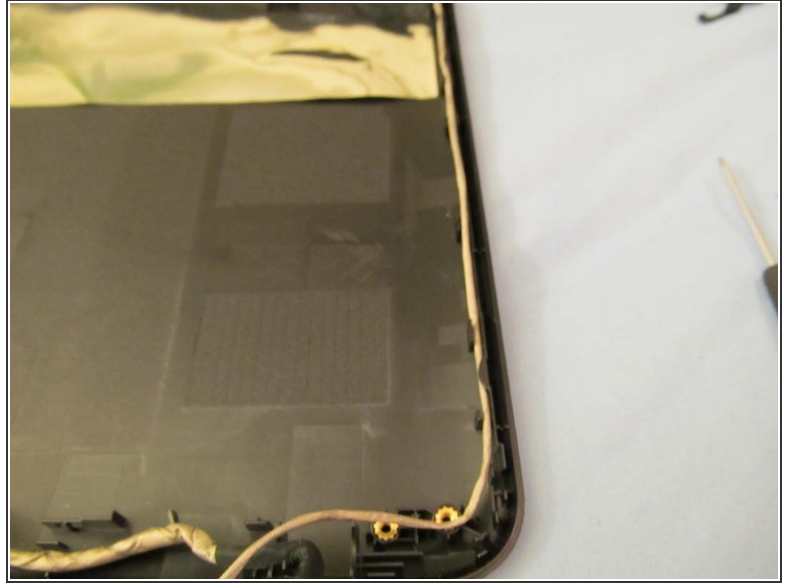
- After the screws are removed from all 4 corners, grab your credit card and pry around all the edges to get the plastic bezel piece off.

Step 19



- After the bezel is removed, unfasten two revealed screws: One on the right hinge, one on the left.

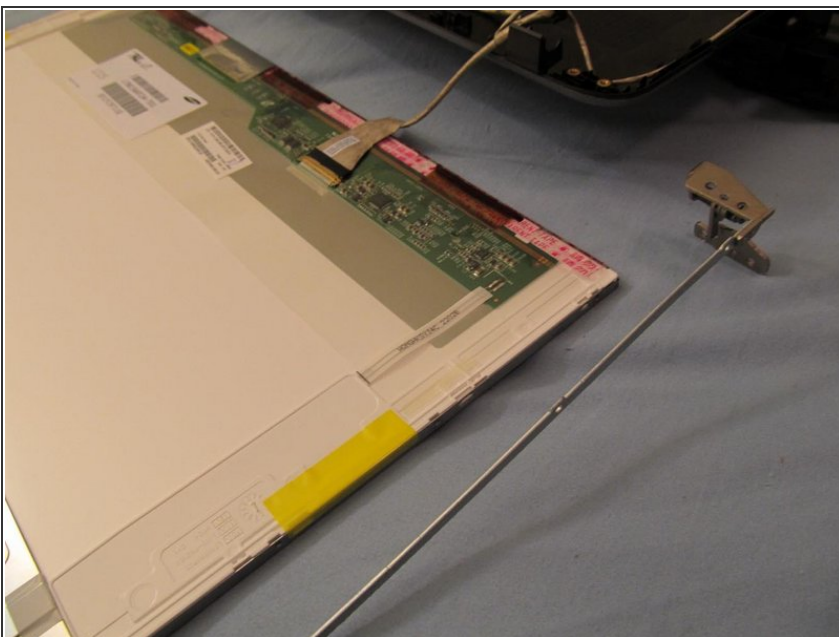
Step 20



- Now you can remove the LCD panel, along with the hinges.

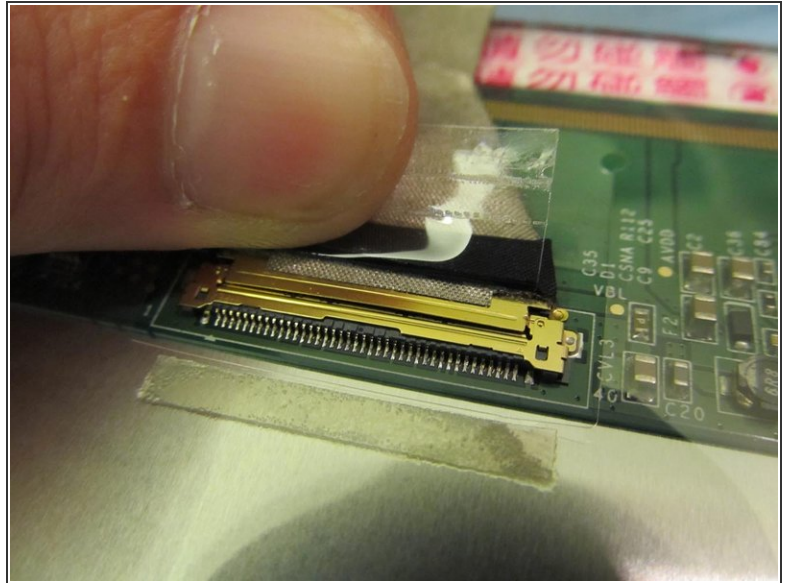
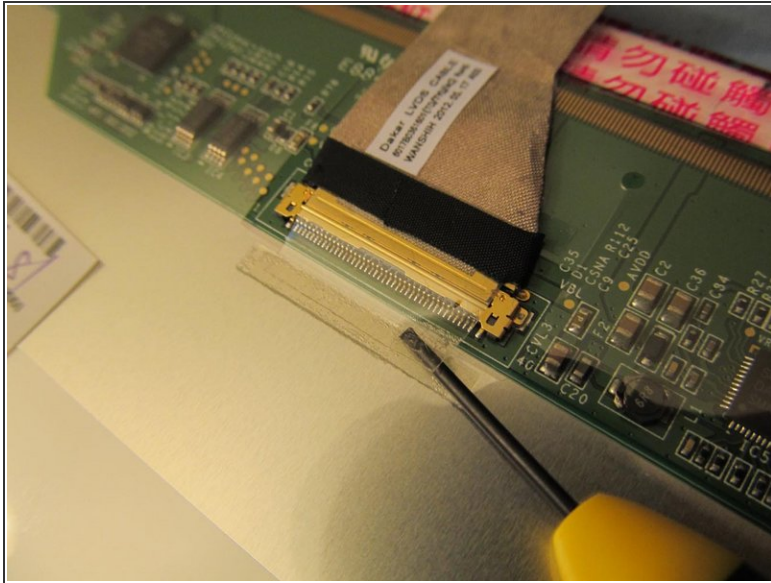
⚠ Note: Lift from the top or left side first. As seen in the second image here, your wifi wire runs up the side of the back panel. Unless you want to put it back into those little grooves, I suggest removing the LCD, and laying it on its face WHILE the wifi line is still intact with the back plastic.

Step 21



- Once the LCD is on its face (and the cables are still intact) remove the 6 screws holding the metal LCD holders in place. There are 3 screws on each side.

Step 22



- Gently pry the small piece of tape away from the back of the LCD. This tape helps keep the LCD cable intact.
- Pic 2: Using the tape you just pried up, pull back gently, unplugging the LCD cable from the old LCD screen.

Step 23



- Check out your screw collection. This is roughly what yours should look like if you're keeping track of them.
- Finally, bust out your new LCD screen that you should have purchased from www.laptopscreen.com, and reverse the entire procedure for installation.
- -- Final Notes and Credits: Difficulty Level: Medium. | Screen purchased from: www.laptopscreen.com (their email support will land you a compatible screen within hours!) | We are The PC Penguin, www.thepcpenguin.com

To reassemble your device, follow these instructions in reverse order.