



Wolf Gourmet WGBL100S Power Cord Replacement

A guide to replacing the power cord in a Wolf Gourmet High-Performance Blender

Written By: Cole Gillespie



INTRODUCTION

If your power cord is broken and your blender will not turn on, follow these steps to replace it.



TOOLS:

- [Flush Wire Cutters](#) (1)
 - [Metal Spudger](#) (1)
 - [Phillips #2 Screwdriver](#) (1)
 - [Phillips #1 Screwdriver](#) (1)
-

Step 1 — Power Cord



- With the bottom of the blender facing up, use a Phillips #2 screwdriver to remove the 4, 1/2 inch long screws in the corners of the device.

⚠ Ensure the blender is off and unplugged before starting.

Step 2



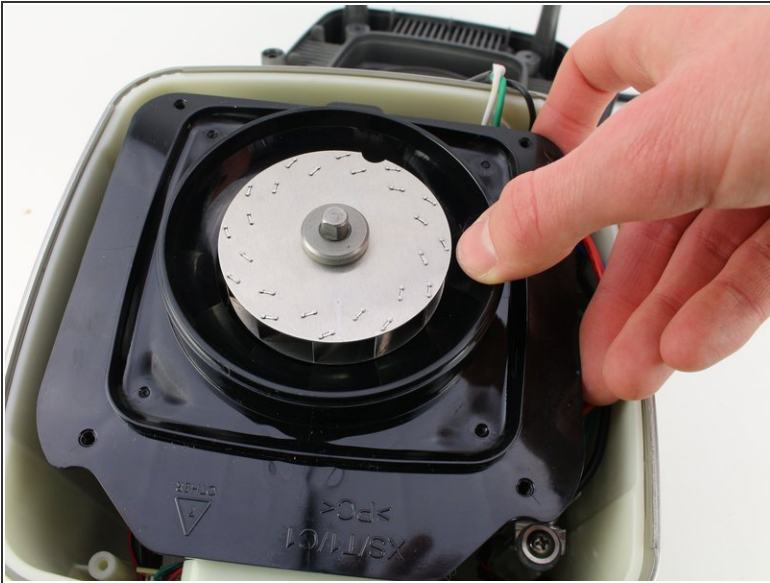
- Using a metal spudger, pry up one side of each of the rubber feet.
- ⓘ Note that one side of each foot is glued down; pry up the non-glued side.

Step 3



- Using the same Phillips #2 screwdriver, unscrew the 1/2 inch long screw under each of the feet.

Step 4



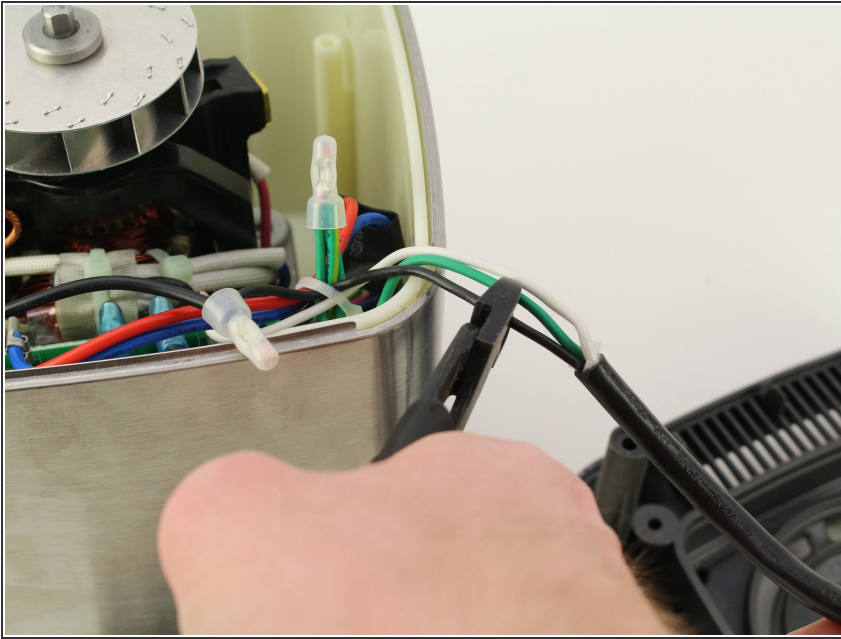
- Pull off the base and remove the plastic housing underneath.

Step 5



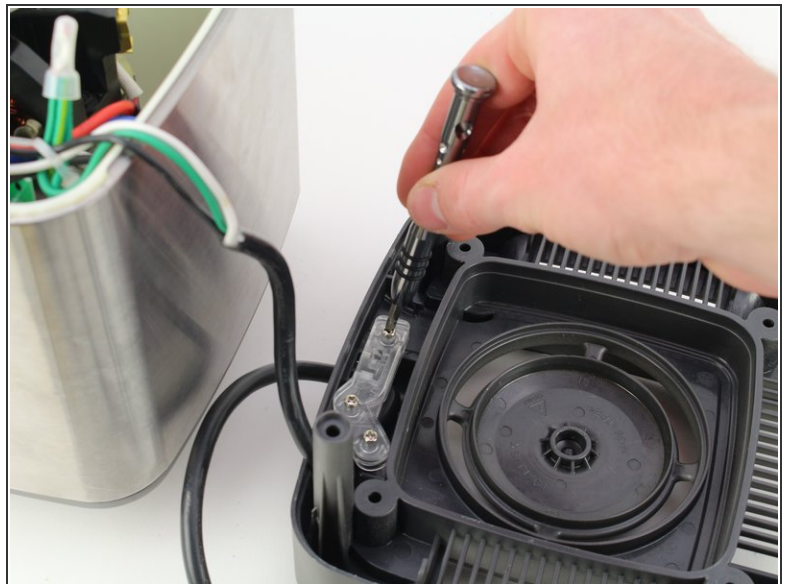
- On the underside of the base, unscrew the three 3/8" long screws on the plastic piece holding the power cord in place using a Phillips #1 screwdriver.
- Pull the plastic cover off.

Step 6



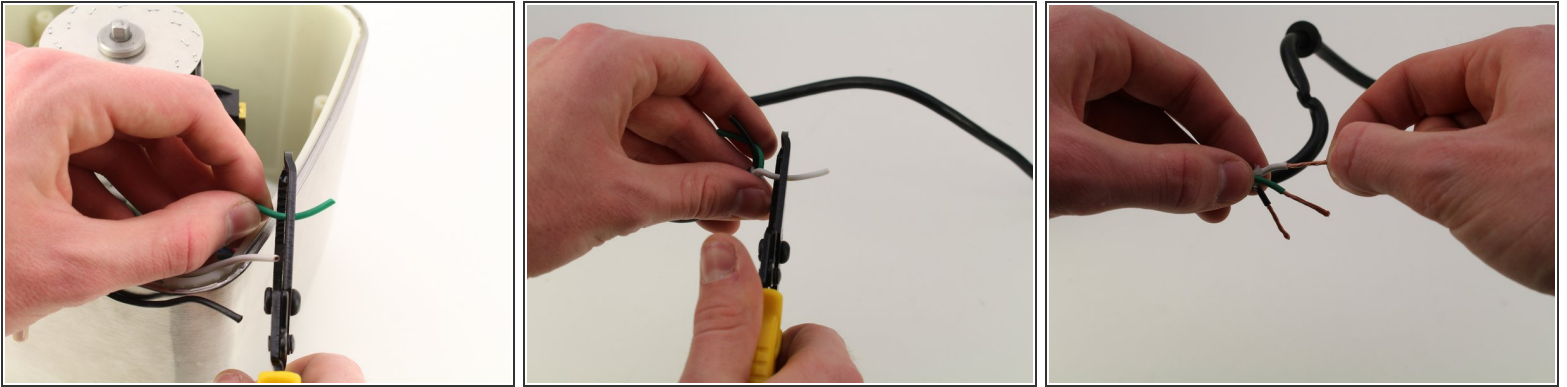
- Using a wire cutter, cut the three wires of the power cord.

Step 7



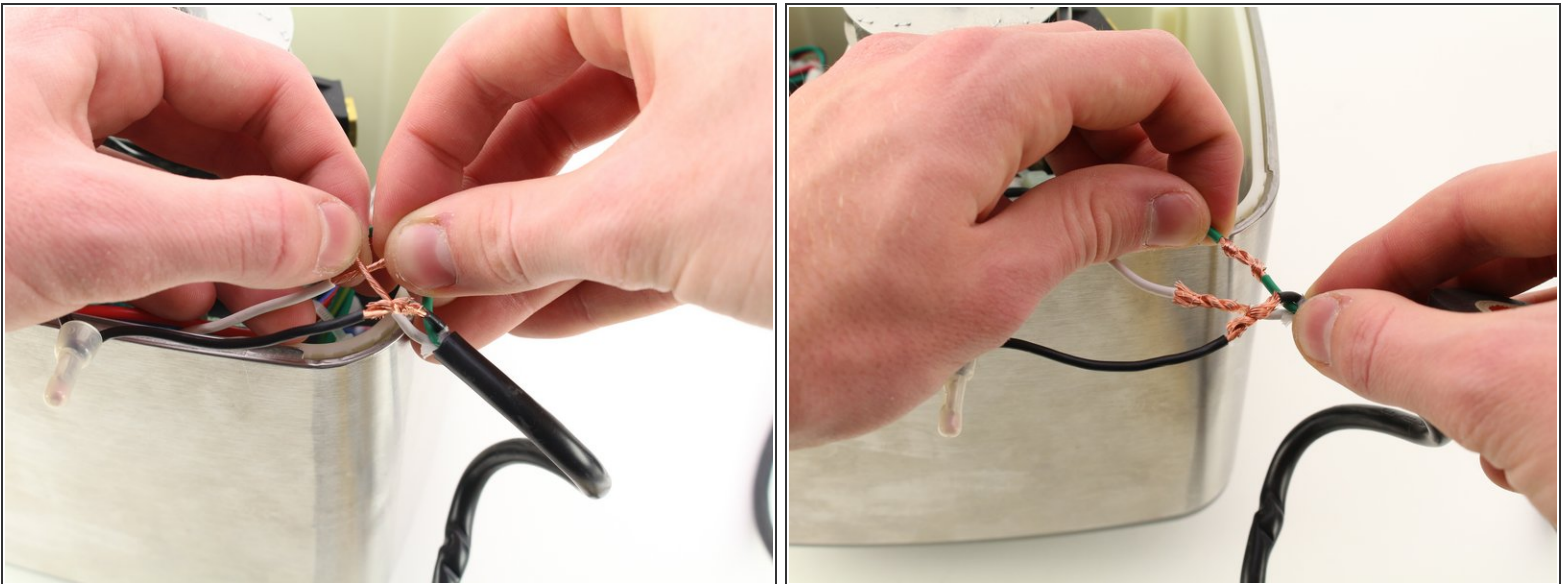
- Pull the cut power cord through the base.
- Then thread the replacement cord back through and re-attach the plastic cover.

Step 8



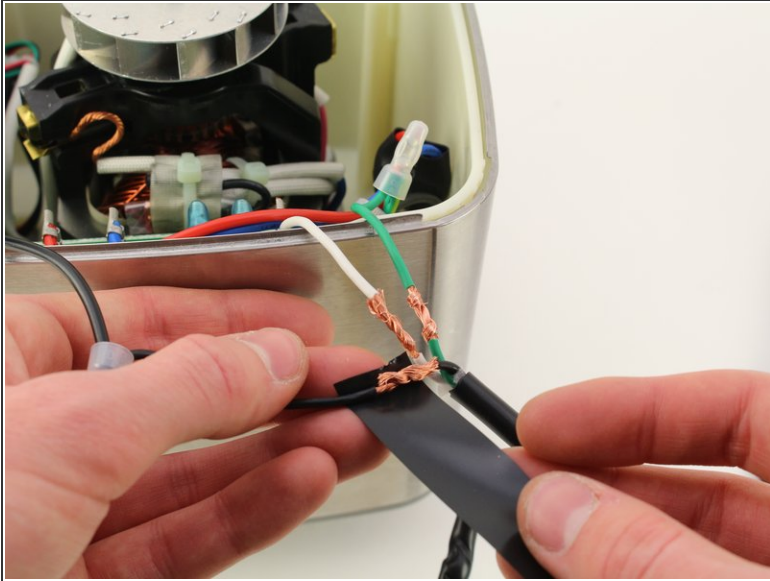
- Strip about an inch of insulation off of the snipped power cord and your replacement cord.
- Twist each strand of wires together to keep them neat.

Step 9



- Twist together the wires from the replacement cord to the wires still attached to the blender.
- Solder the connection if possible.

Step 10



- Wrap all the connections in electrical tape or heat shrink tubing.

To reassemble your device, follow steps 1-5 in reverse order.