



# Sony SRS-XB30 Bluetooth Chip Replacement

This is a replacement guide for the Sony SRS-XB30 Bluetooth Chip.

Written By: Star Dragon



## INTRODUCTION

One of the common problems with the Sony SRS-XB30 is trouble syncing with the Bluetooth chip. This guide will give you step by step instructions on how to replace the Bluetooth chip.



### TOOLS:

- [Metal Spudger](#) (1)
  - [Phillips #1 Screwdriver](#) (1)
  - [T7 Torx Screwdriver](#) (1)
-

## Step 1 — Battery



- To remove the speaker grill, insert the big spudger underneath it in each corner.
- ⓘ Work around the edges to pry the grill up and off.

## Step 2



- With the Sony logo facing towards you, use the medium spudger to lift the side plates from the internal frame.
- ⓘ This will need to be done on all four sides of the speaker to remove all four panels
- ⚠ This requires some effort because the adhesive is sticky.

This document was generated on 2020-11-25 10:19:33 AM (MST).

## Step 3



- Locate the four screws on the now exposed front panel.
- ⓘ Using the screwdriver with bit T7, unscrew each screw (15.0 mm long).

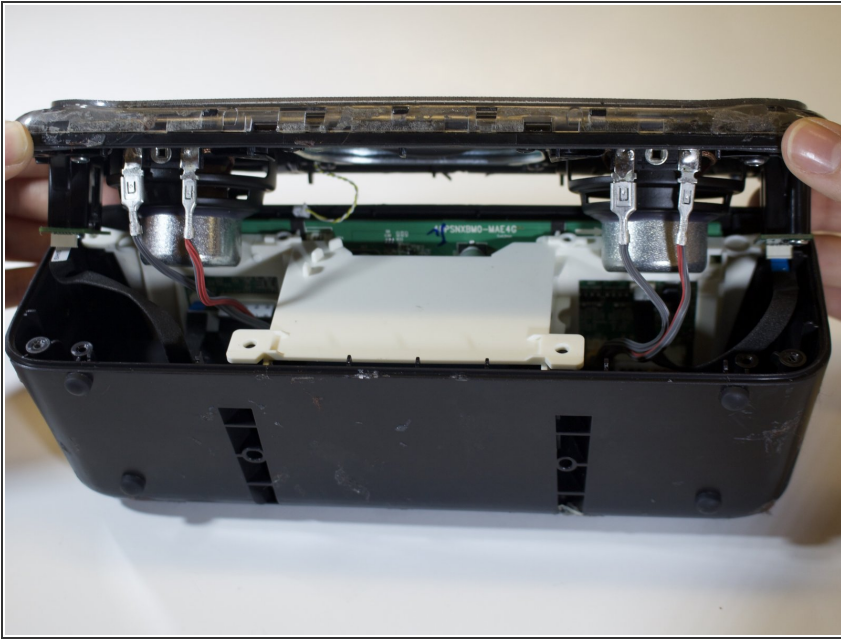
## Step 4



- Next, remove the four outer edge screws, located on each corner of the speaker. The outer edge of the speaker is a clear plastic.
- ⓘ Use the same T7 screwdriver head here.
- Remove each of the four corner screws (15.0 mm long).

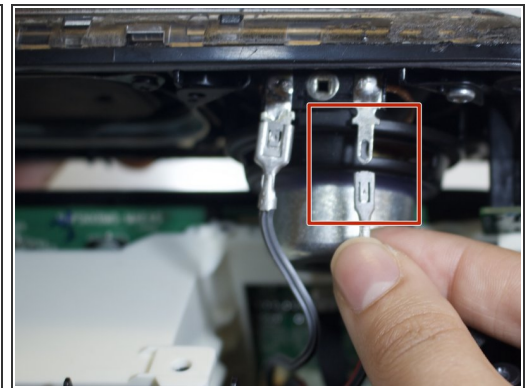
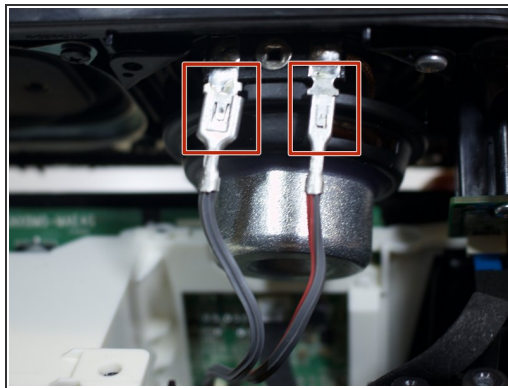
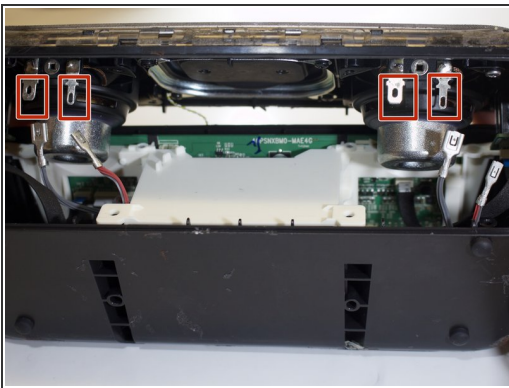


## Step 5



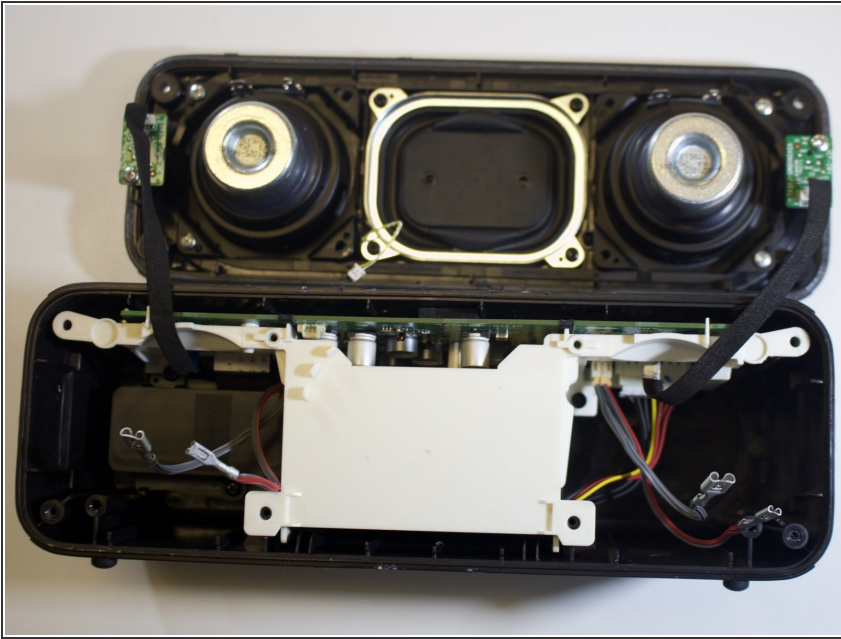
- With a little force, carefully lift the lid of the speaker.
- ⓘ Make sure that you do not pull on the wires.

## Step 6



- Unclip the four wire connectors (that are attached to the speaker lid).
- Disconnect the thin yellow wire (attached to the speaker lid) from its port.

## Step 7



- Separate the speaker lid from the bottom frame.
- ① To prepare the speaker for the next step place the lid parallel to the frame.

## Step 8



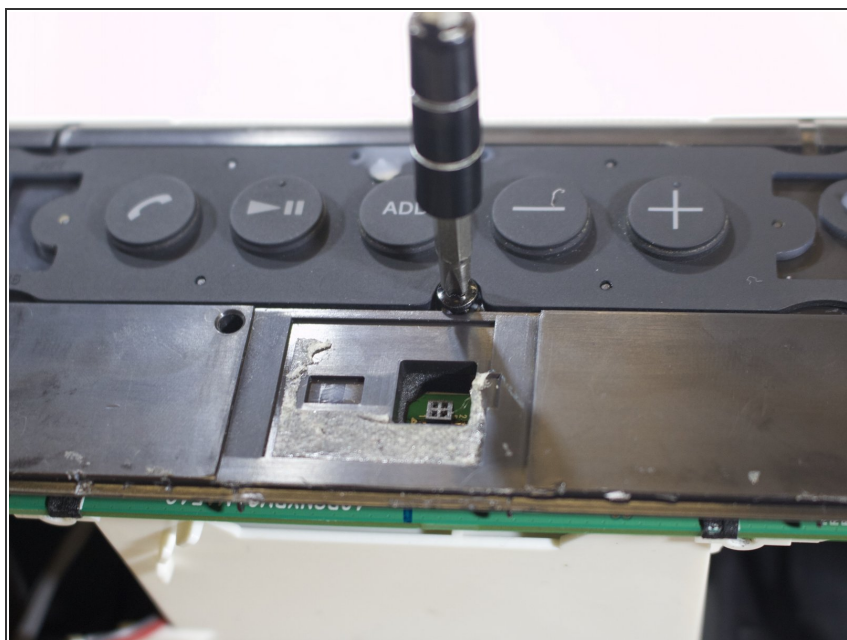
- Locate the two silver screws (9 mm) attached to the two LED-light-chips on the speaker lid.
- ① Using the screwdriver with bit PH1, unscrew each screw.

## Step 9



- Separate the speaker lid entirely from the bottom frame.

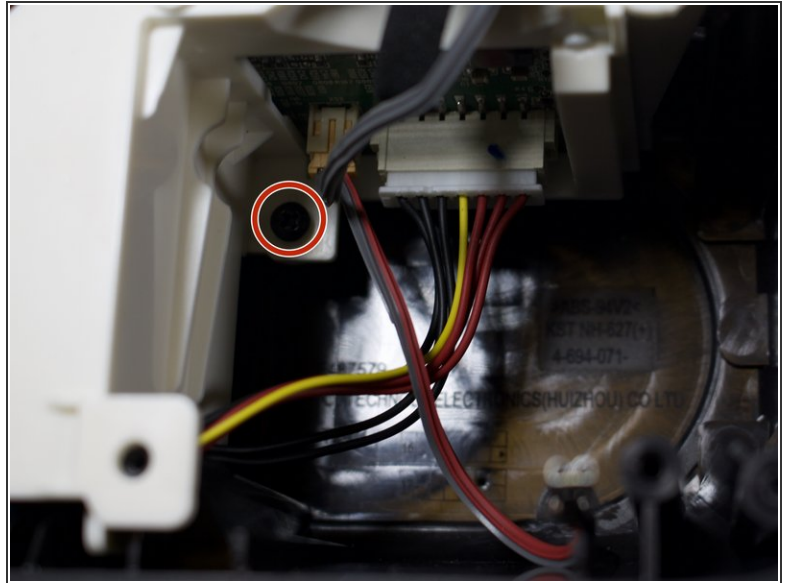
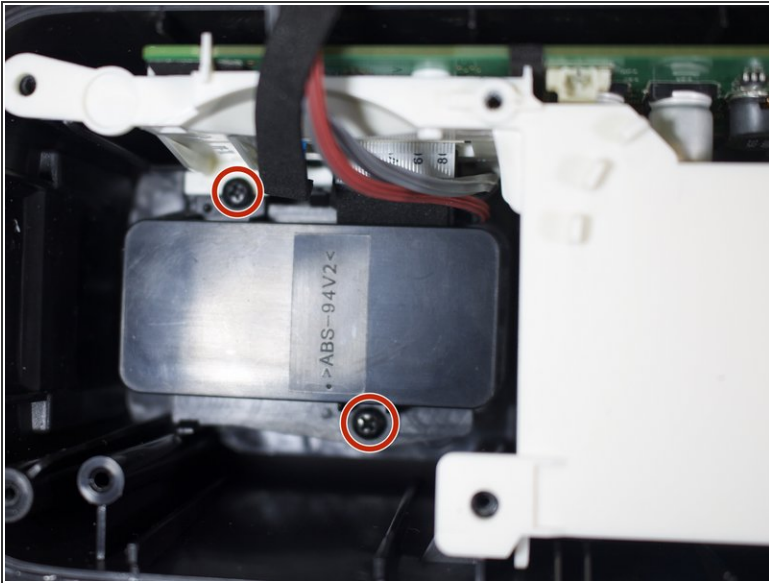
## Step 10



- Remove the top screw (10 mm).
- ① Use the screwdriver with bit T7.



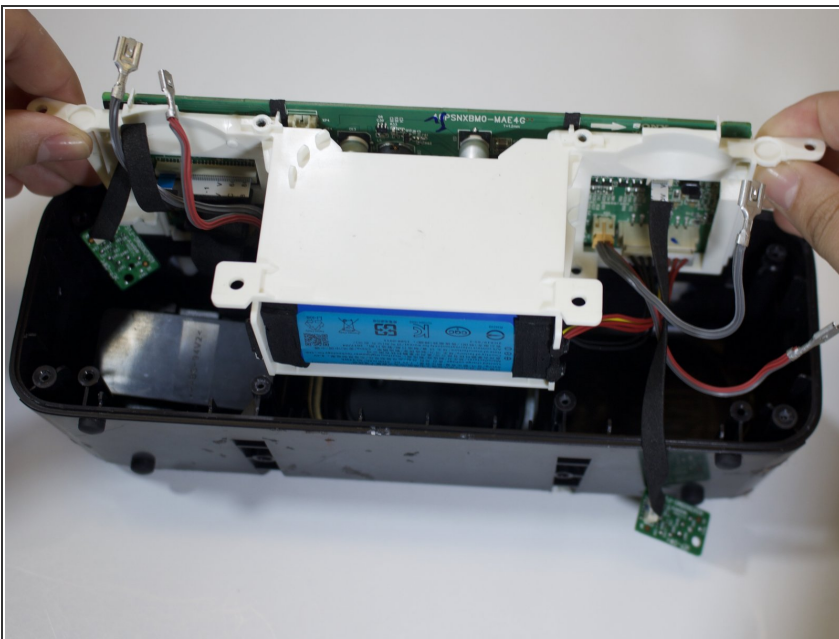
## Step 11



- Locate and remove the three black screws (10.0 mm) within the internal frame. Use bit T7.

**i** There are two screws on the left side of the white box and one to its right.

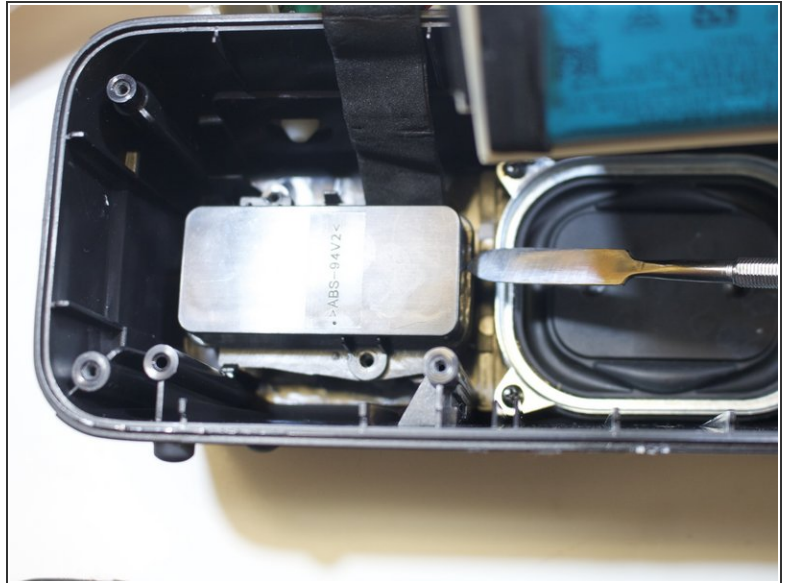
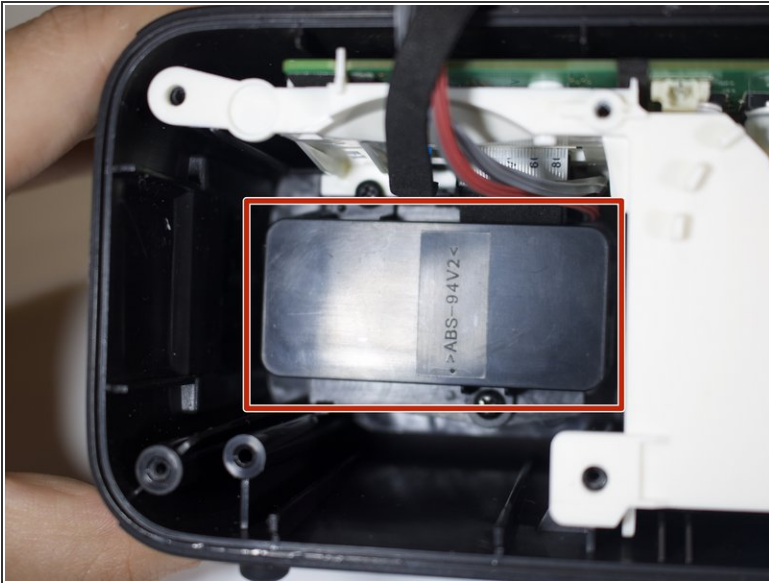
## Step 12



- Slightly lift the white box with all the wires still attached.

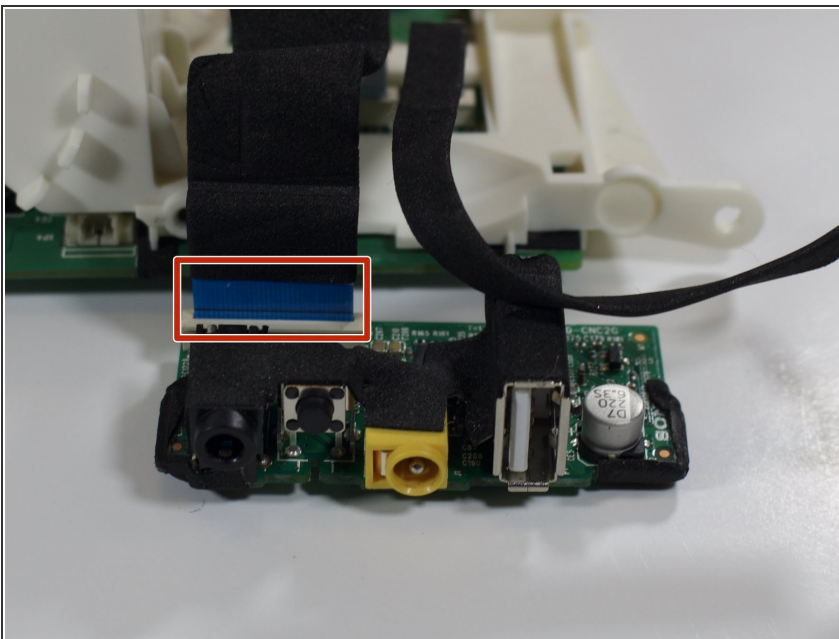


## Step 13



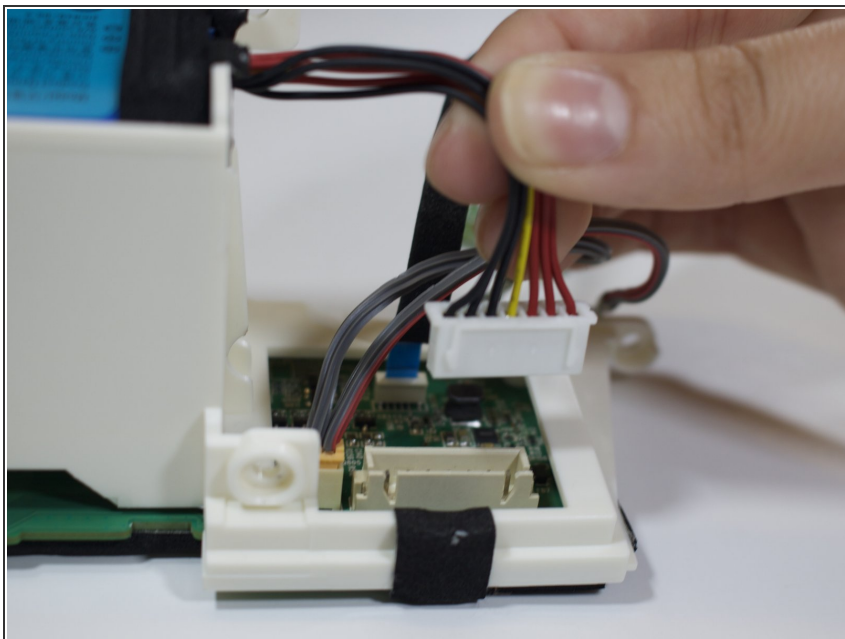
- Take the big spudger and pry the black casing up from the circuit box.

## Step 14



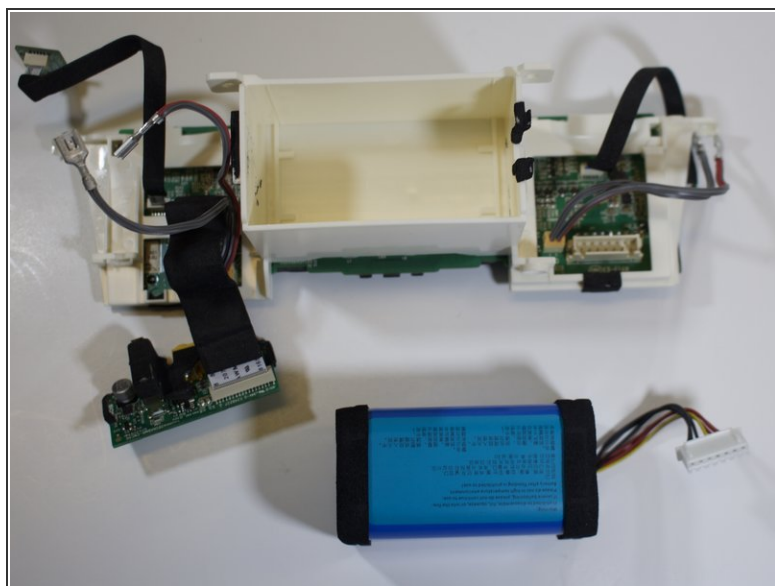
- Locate the blue film attached to the circuit box containing the charging port.
- ① Detach the blue film from the box.

## Step 15



- Detach the yellow, black and red wires by pulling them directly up.

## Step 16



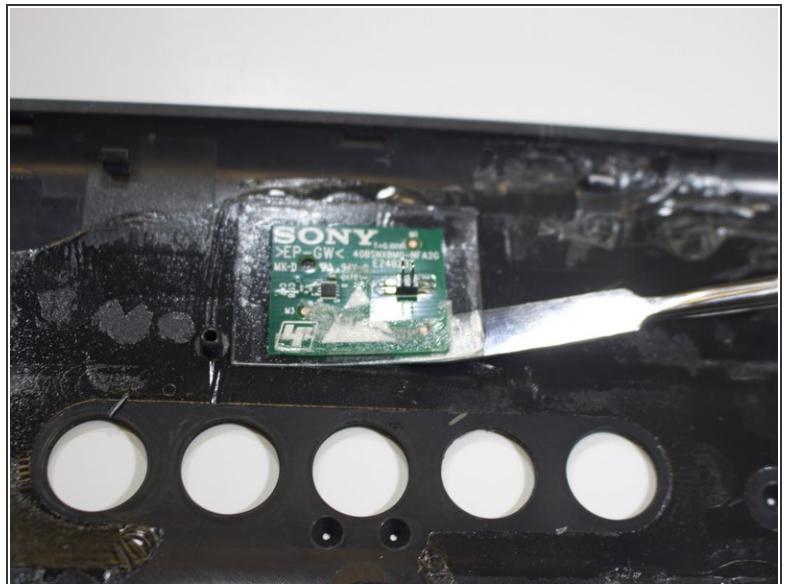
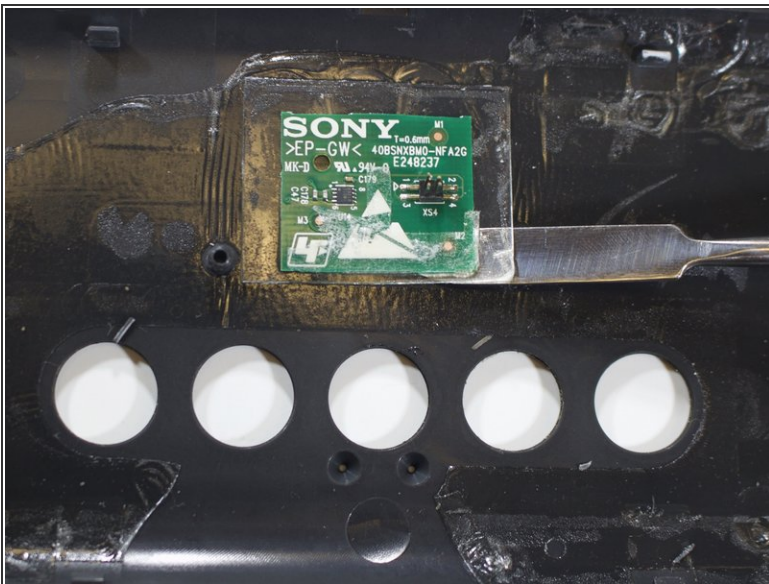
- Insert the spudger along the battery edge and firmly hold the wires. Lift both sides up. The battery will pop out from its encasement.

## Step 17 — Bluetooth Chip



- To save time, pry up and remove the top panel first.

## Step 18



- Take the spudger and pry under the plastic square that the Bluetooth chip is directly attached to.
- ⓘ This will separate the plastic square from the lid.



## Step 19



- Remove the Bluetooth chip.

To reassemble your device, follow these instructions in reverse order.