



LG G Pad X 8.3 Motherboard Replacement

Use this guide to replace the motherboard in your LG G Pad X 8.3

Written By: Michael H



INTRODUCTION

The motherboard is the foundation of any electronic device. This guide will walk you through the replacement of one of the most essential components of the LG G Pad X 8.3.

TOOLS:

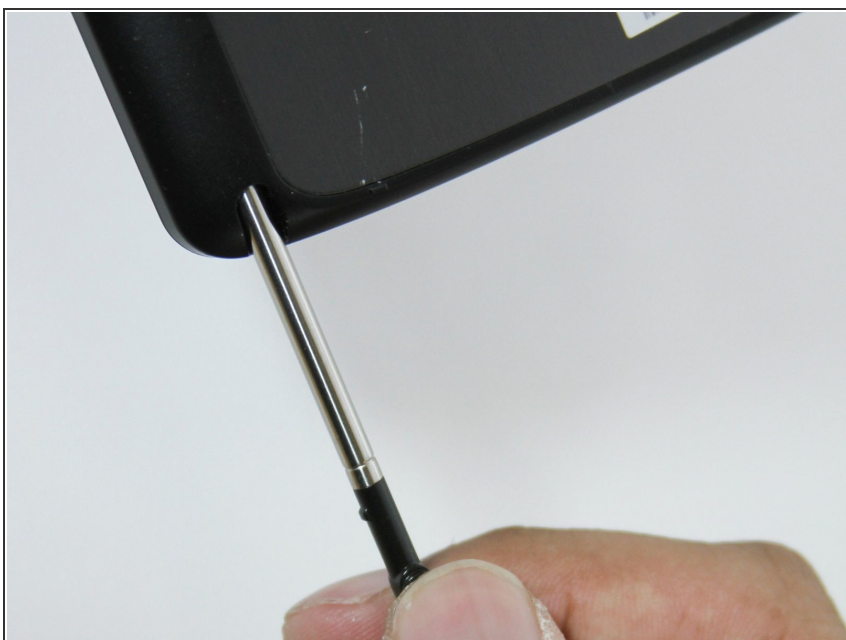
- [iFixit Opening Tools](#) (2)
 - [Phillips #000 Screwdriver](#) (1)
 - [Magnetic Project Mat](#) (1)
-

Step 1 — Battery



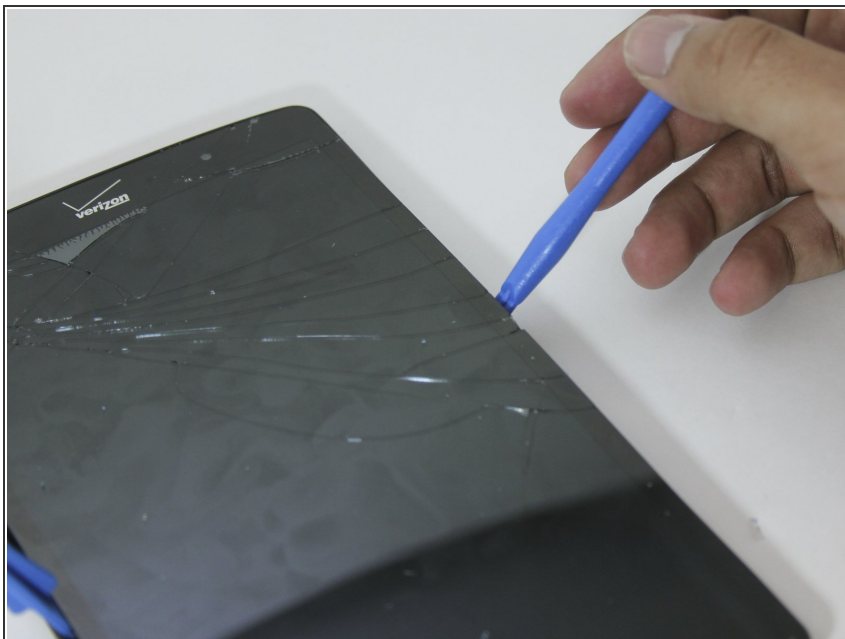
- Remove the cover of the SD card. Find it on the right side of the back of the tablet.
- Press the SD card in to make it pop out.

Step 2



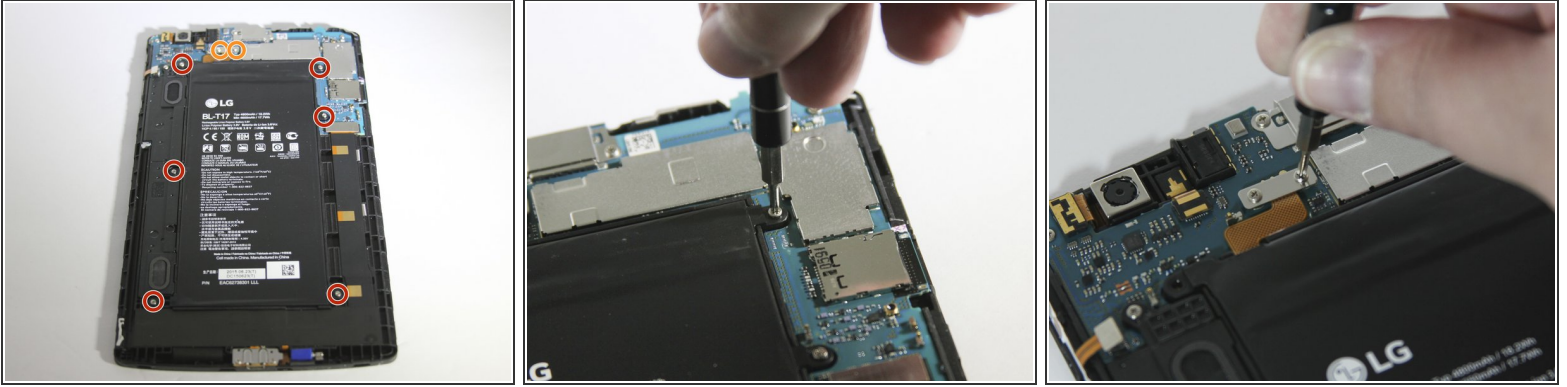
- Slide the stylus out from the bottom left corner of the back panel.

Step 3



- Start at a corner and pry the screen up with a plastic opening tool.
 - ⓘ You can also use a plastic spudger for this task, but do not use metal tools. They can be dangerous to you and the device.
 - Slide the tool in the seam at the edge of the screen.
 - Wedge additional plastic opening tools in the seam to help lift the screen.
 - Slide both wedged plastic opening tools towards the bottom to pop the screen loose.
- ⚠ If your screen is cracked, work slowly to avoid flinging glass shards when prying.

Step 4



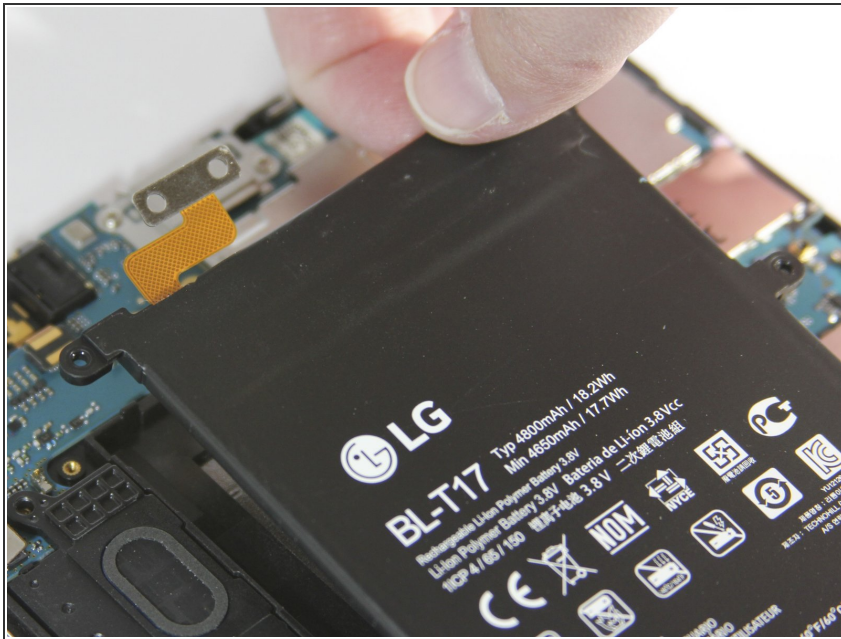
- With a Phillips #000 screwdriver, unscrew the six 4.0 mm screws that hold down the battery.
- With the Phillips #000 screwdriver, unscrew the two 4.0 mm screws that hold down the battery ribbon connector.
- Use a magnetic mat to keep track of these tiny screws for later reassembly.

Step 5



- Lift the battery ribbon connector with your finger.

Step 6



- Lift the battery with your fingers and remove it from the device.

Step 7 — Speaker



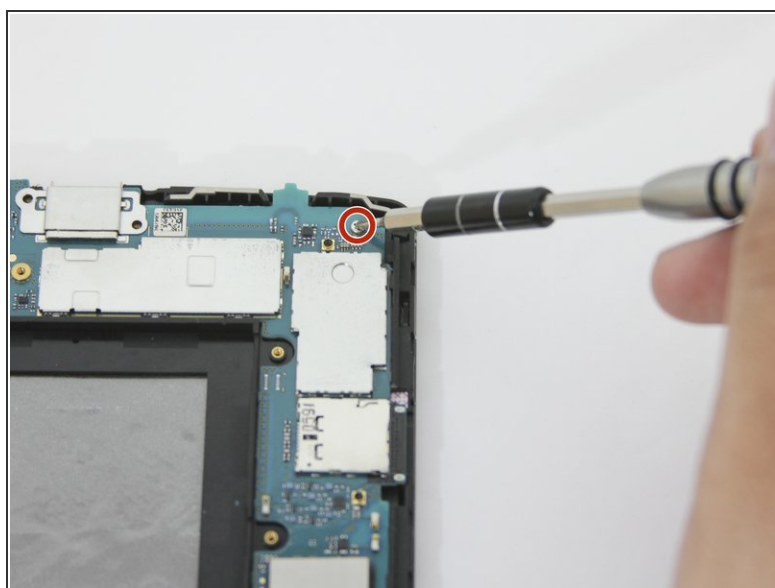
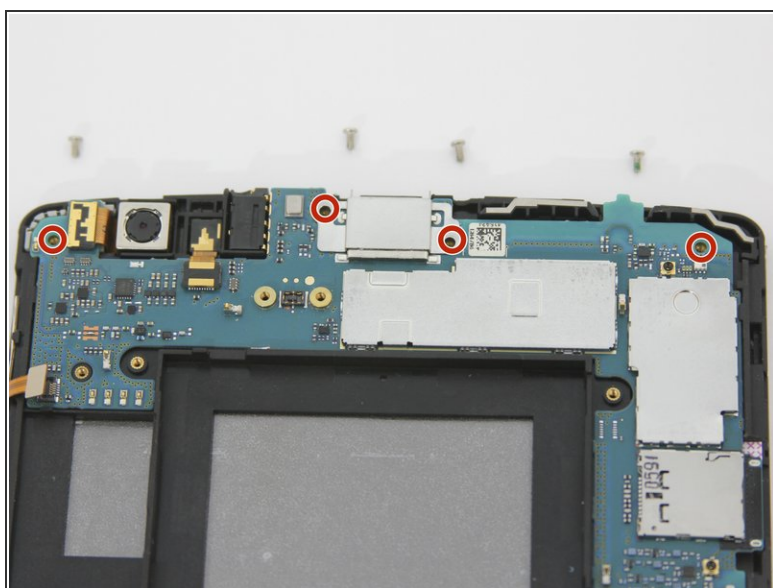
- With a Phillips #000 screwdriver, unscrew the one 4.0 mm screw that is holding down the speaker.
- Use the magnetic mat to keep track of the tiny screw(s).

Step 8



- Lift and remove the speaker with your finger.

Step 9 — Motherboard



- With the Phillips #000 screwdriver, unscrew the four 4.0 mm screw that are holding down the motherboard.

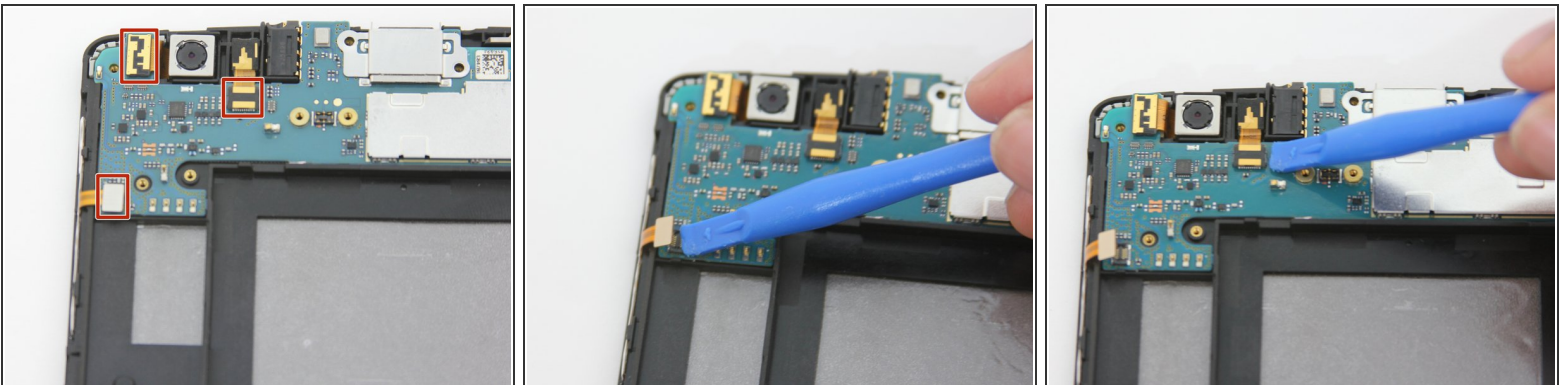
Step 10



- Use a plastic opening tool to lift up the ribbon connector at the bottom of the motherboard.

⚠ Only lift up the end of the ribbon connector that is attached to the motherboard. The end at the base of the tablet should stay attached.

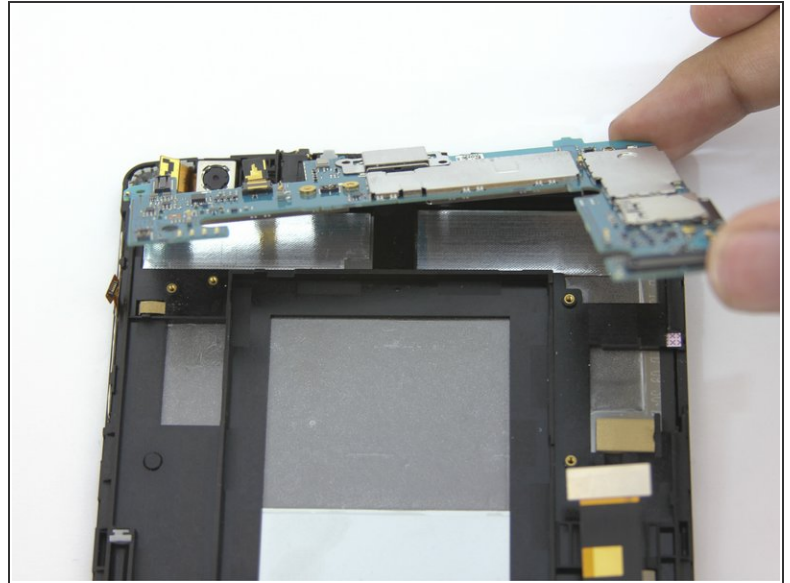
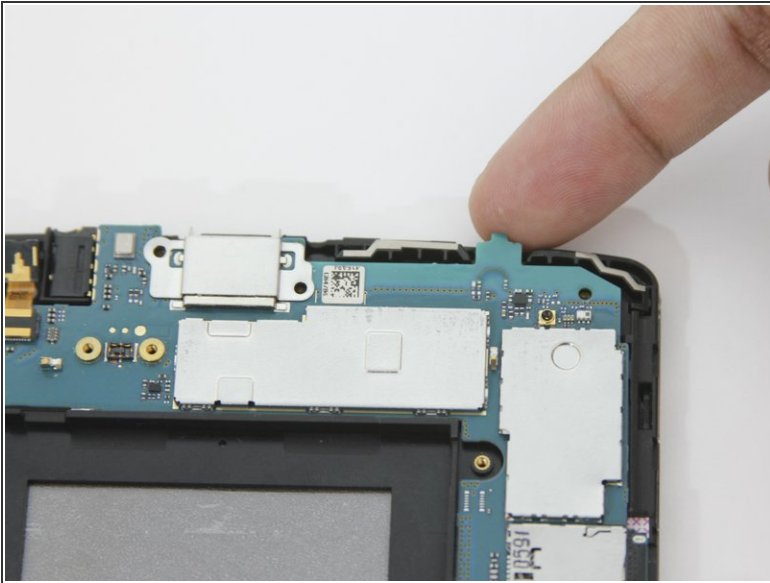
Step 11



- Lift and release the remaining ribbon connectors in the upper left corner of the motherboard with a plastic opening tool.

⚠ Avoid bending the tips of the ribbon connectors to prevent damage.

Step 12



- With your fingers, lift up the motherboard from the upper right corner.
- Carefully remove the fragile motherboard from the device.

To reassemble your device, follow these instructions in reverse order.