



Dell Inspiron 15 7579 Wifi Card Replacement

Remove and replace the wifi card in the Dell Inspiron 15 7579.

Written By: Inaki Madrigal



INTRODUCTION

This guide will walk you through the process to remove and replace the wifi internet card in your Dell Inspiron 15 7579.

TOOLS:

- [Phillips #0 Screwdriver](#) (1)
 - [Phillips #1 Screwdriver](#) (1)
 - [Metal Spudger](#) (1)
 - [Tweezers](#) (1)
-

Step 1 — Back Panel



- Remove the ten 7.9 mm screws with the Phillips PH0 screwdriver.

Step 2



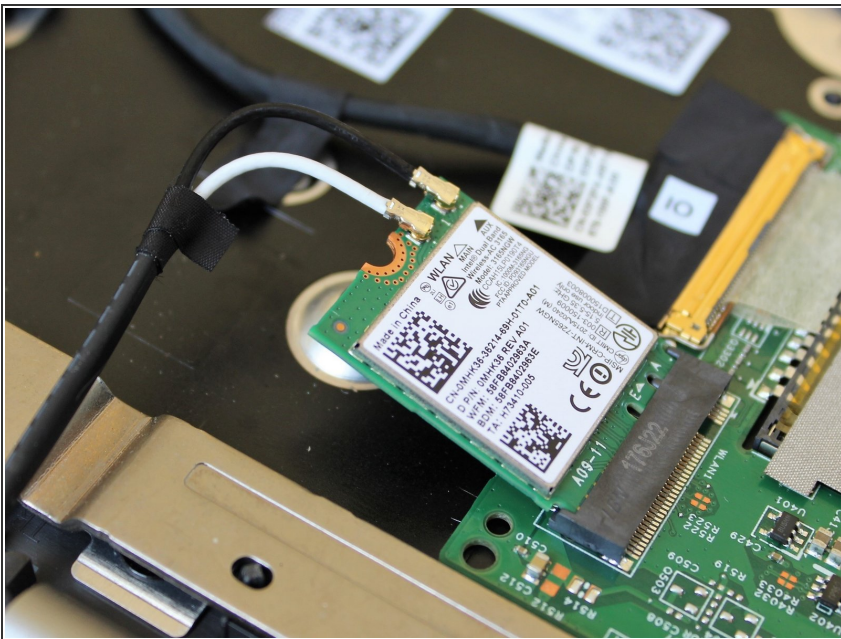
- Insert metal spudger into a gap in between the back panel and the back of the screen.
- Pry off the back panel using the metal spudger as a lever, and remove the back panel by lifting the rest off by hand.

Step 3 — Wifi Card



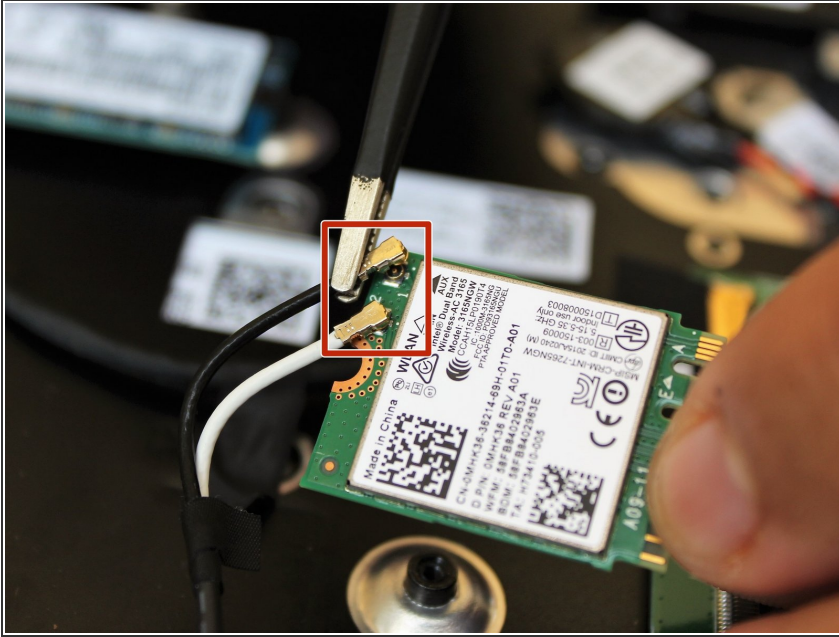
- Remove the bracket holding the card in place by unscrewing the single 3 mm screw located in the upper left hand corner of the device using a Phillips #1 screwdriver bit.

Step 4



- Pull the Wi-Fi card out of the connector slot.

Step 5



- Remove the two connector pins from the wifi card using tweezers.
- ☑ During reassembly, the pins require some finesse to fit them back onto the card. It will take time to put back on. Be sure to line up the socket on the cable to the pin socket on the card.

To reassemble your device, follow these instructions in reverse order.