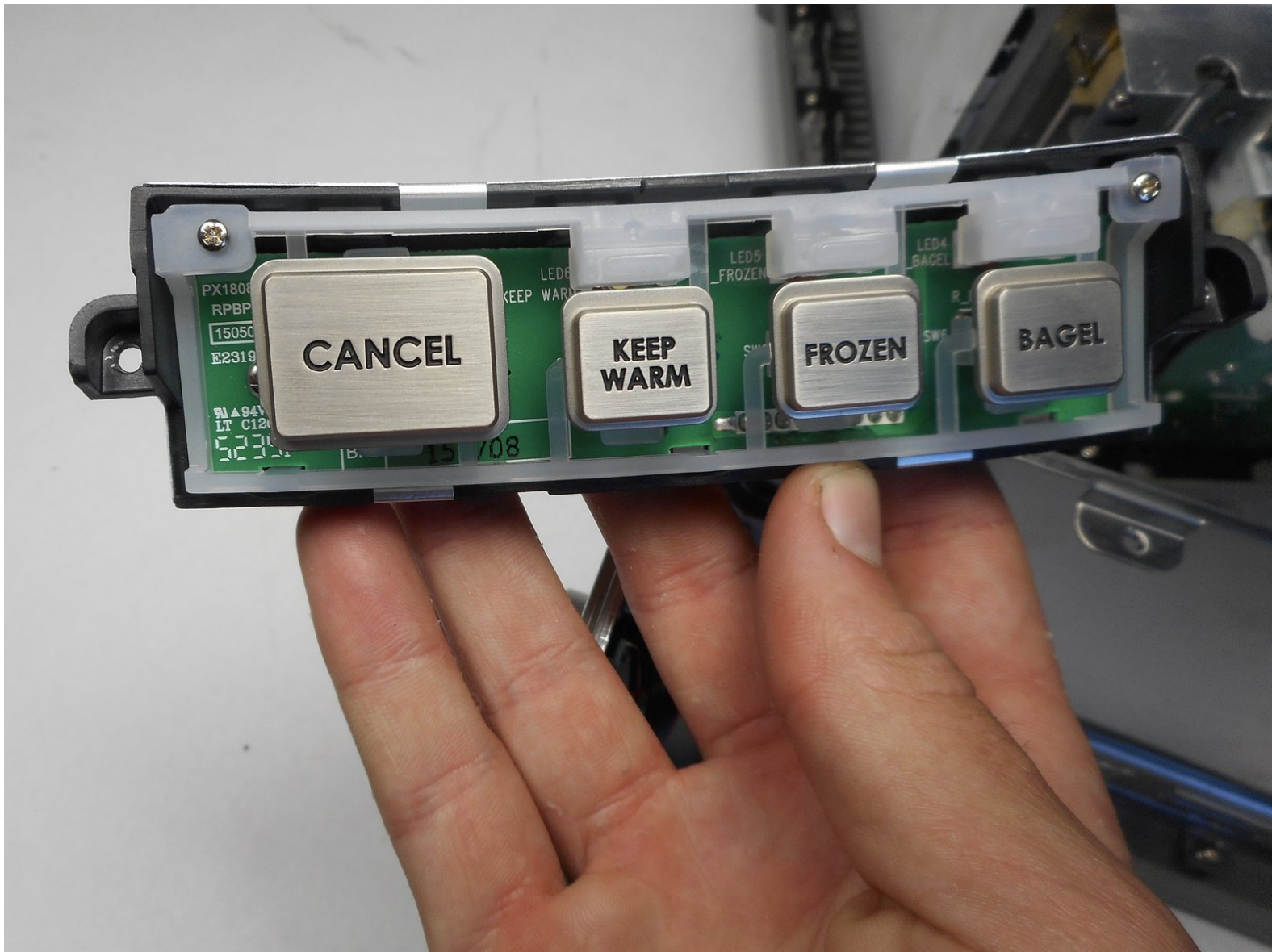




# Wolf Gourmet WGTR102S Lighting Component Replacement

Gives instructions for replacing the light component on a Wolf Gourmet WGTR102S in the case that lights on the buttons do not turn on.

Written By: Ryan Funchess



---

## INTRODUCTION

If the buttons on your toaster don't light up, try replacing the lighting component with this guide.

---



### TOOLS:

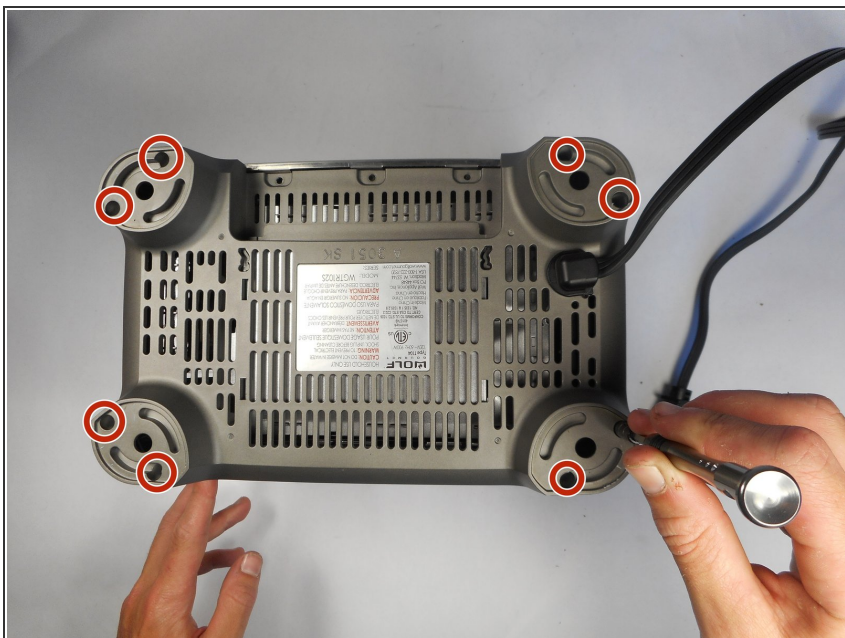
- [Y1 Tri-point Screwdriver](#) (1)
  - [Metal Spudger Set](#) (1)
-

## Step 1 — Outer Shell



- Using a wedge, pry off the rubber pieces on the bottom of each foot of the toaster.

## Step 2



- Remove the eight 8mm screws on each toaster foot using a Tri-point Y1 screwdriver.

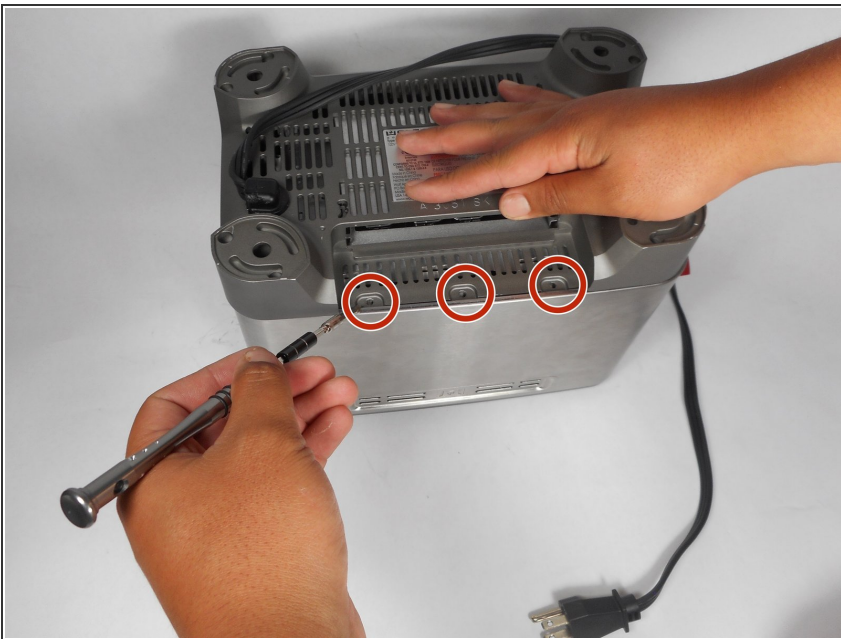


### Step 3



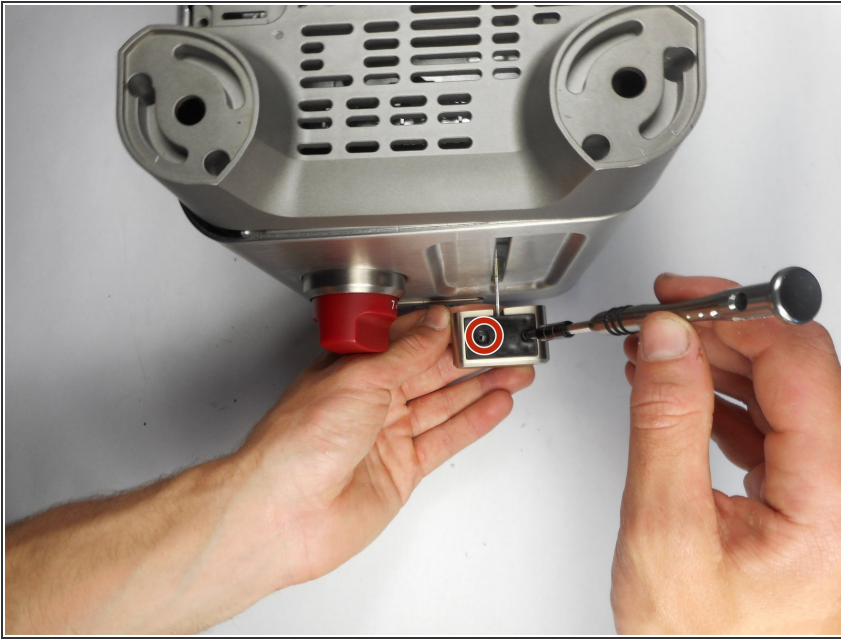
- Remove the crumb collector located on the bottom of the toaster.

### Step 4



- Remove the three 8mm screws using the Tri-point Y1 screwdriver.

## Step 5



- Remove the two 8mm screws on the bottom of the slide lever using a Tri-point Y1 screwdriver.
- Once the screws are removed, detach the black plastic cover on the bottom of the slide lever.

## Step 6




- Remove the final 8mm screw in the slide lever.
- The lever can now pull away from the entire unit.

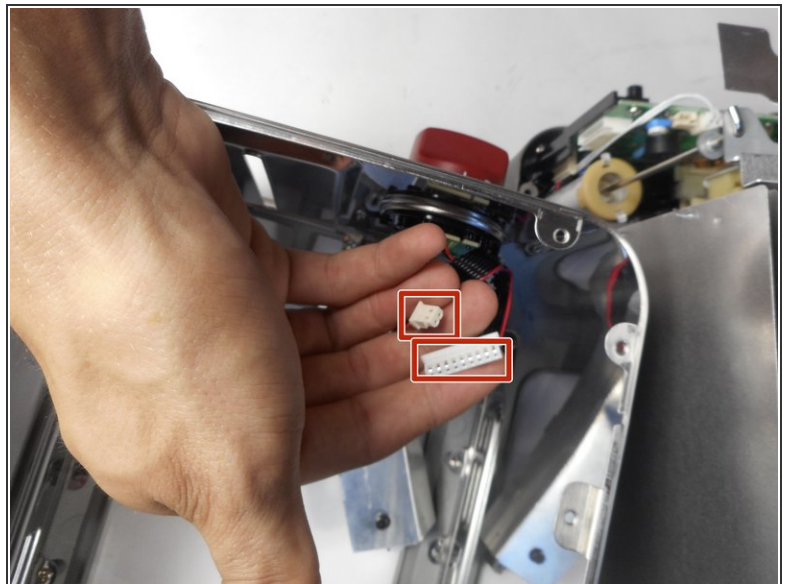
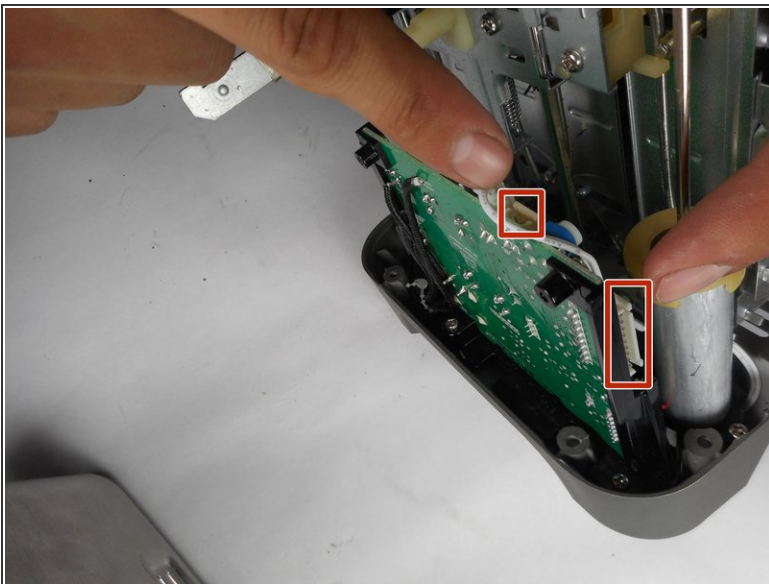
## Step 7



- Remove toaster's outer shell by lifting straight up.

 Slowly remove the outer shell. Disconnect ground wire before fully separating the shell and inner components.

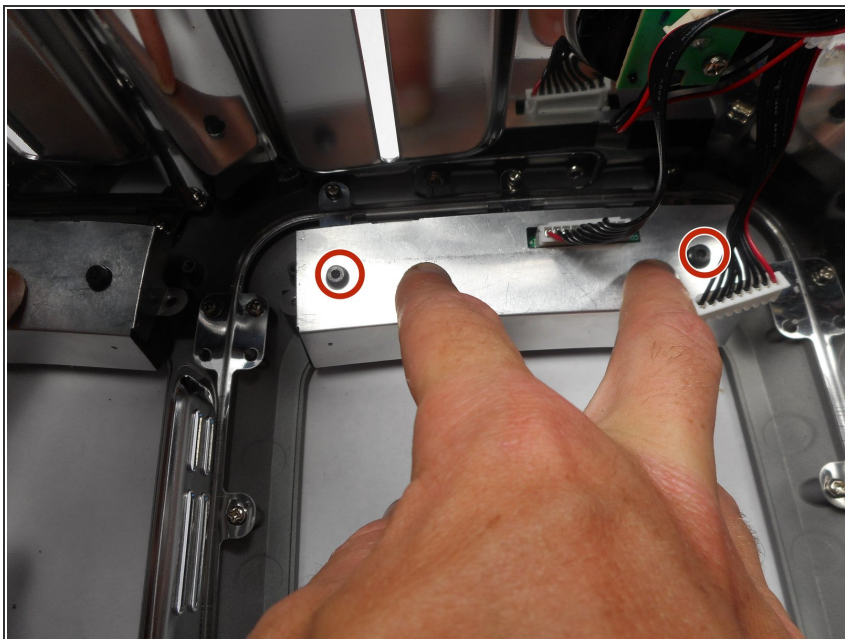
## Step 8



- Disconnect the wire cluster that connects the lights and circuit board by pulling apart the two plastic connectors.
- Remove the outer shell from the device.

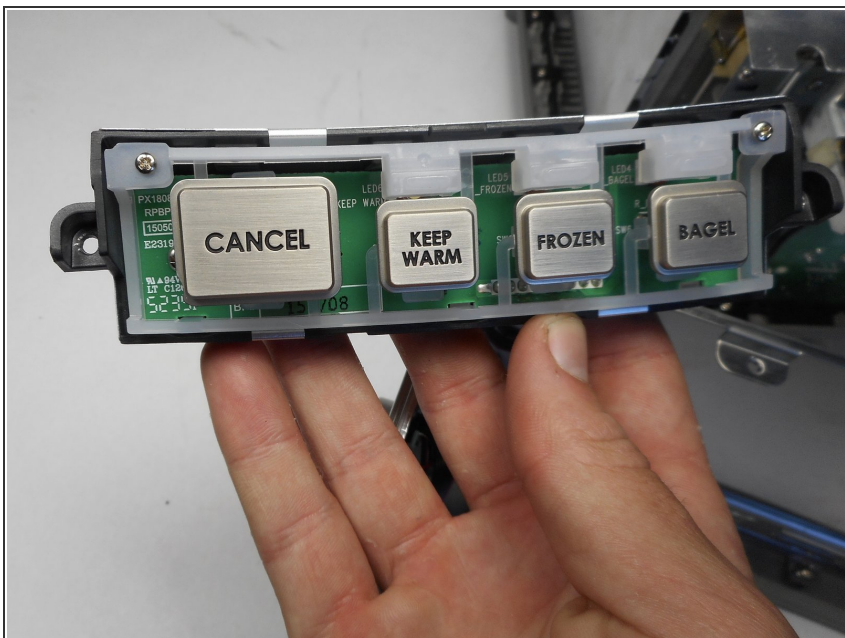


## Step 9 — Lighting Component



- Remove two 8mm screws securing the lighting component using a Tri-point Y1 screwdriver.

## Step 10



- Remove the lighting component from the device.

To reassemble your device, follow these instructions in reverse order.