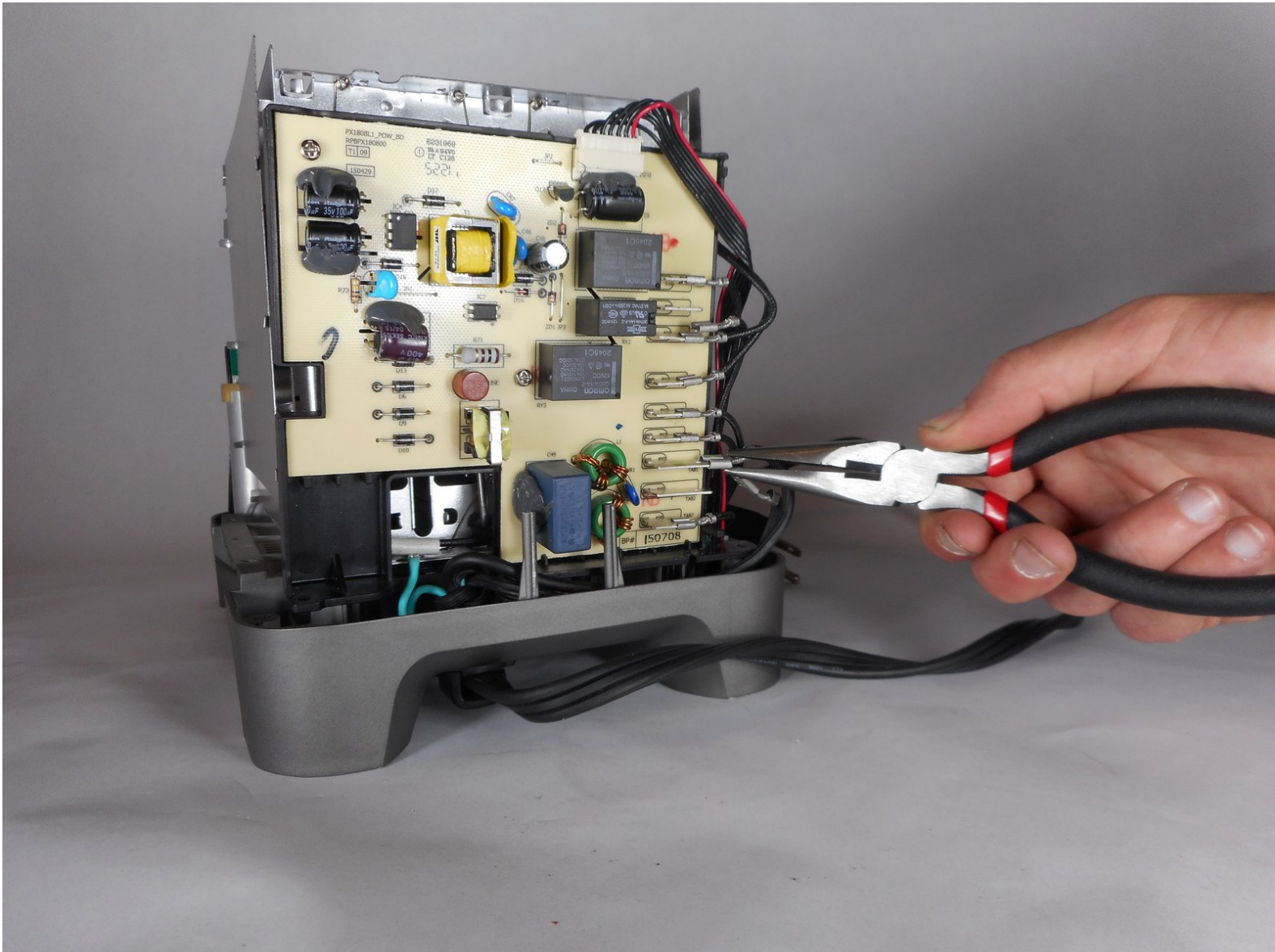




Wolf Gourmet WGTR102S Electrical Connection Replacement

Details how to replace electrical connection in Wolf Gourmet WGTR102S Toaster.

Written By: Ryan Funchess



INTRODUCTION

If no electricity flows through the toaster when plugged in, try replacing the electrical connection with this guide.



TOOLS:

- [Large Needle Nose Pliers](#) (1)
 - [Y1 Tri-point Screwdriver](#) (1)
 - [Metal Spudger Set](#) (1)
-

Step 1 — Outer Shell



- Using a wedge, pry off the rubber pieces on the bottom of each foot of the toaster.

Step 2



- Remove the eight 8mm screws on each toaster foot using a Tri-point Y1 screwdriver.

Step 3



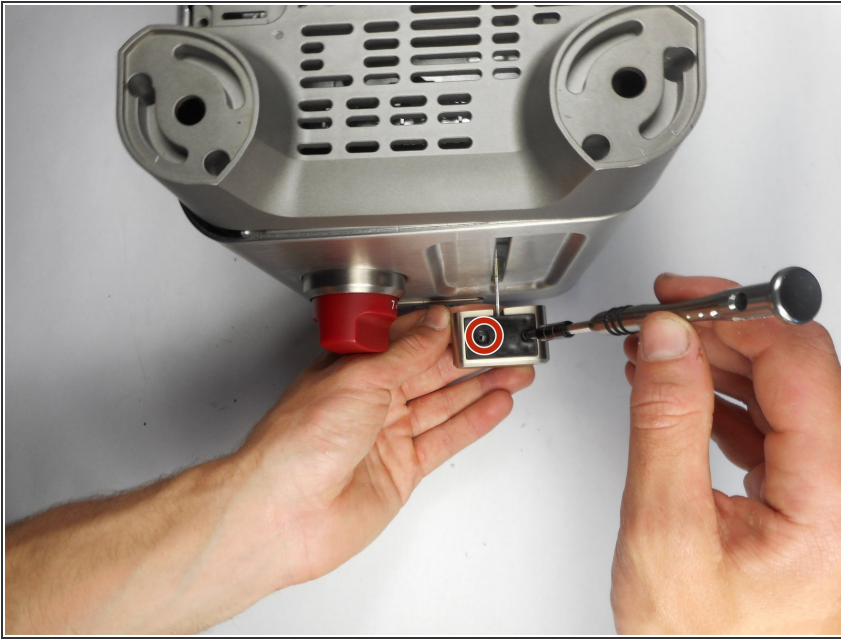
- Remove the crumb collector located on the bottom of the toaster.

Step 4



- Remove the three 8mm screws using the Tri-point Y1 screwdriver.

Step 5



- Remove the two 8mm screws on the bottom of the slide lever using a Tri-point Y1 screwdriver.
- Once the screws are removed, detach the black plastic cover on the bottom of the slide lever.

Step 6




- Remove the final 8mm screw in the slide lever.
- The lever can now pull away from the entire unit.

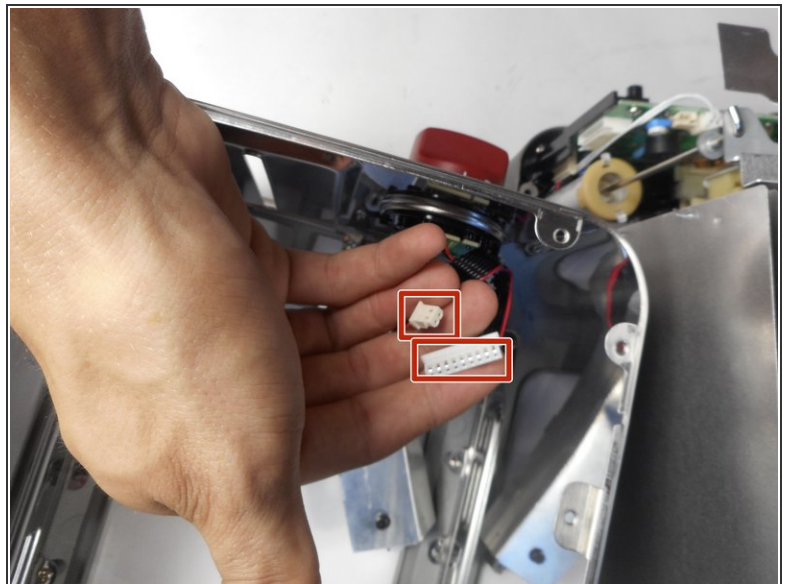
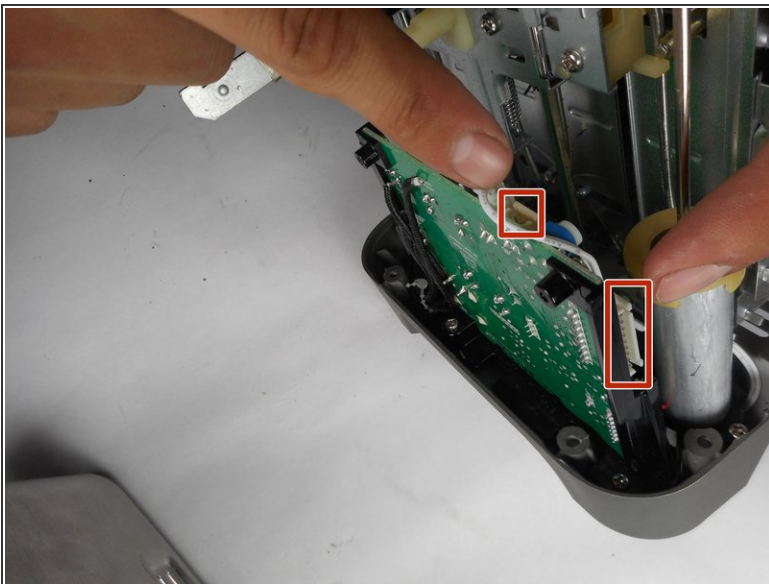
Step 7



- Remove toaster's outer shell by lifting straight up.

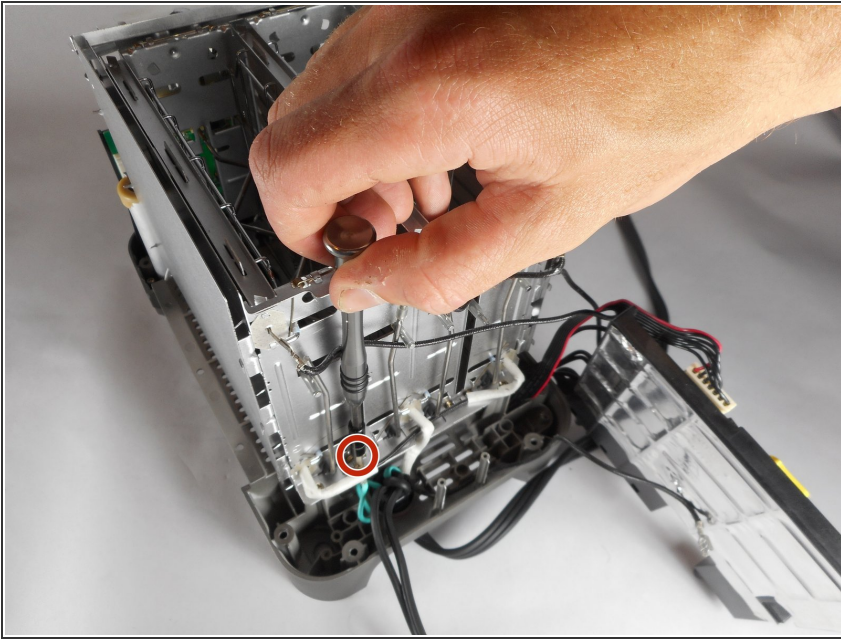
 Slowly remove the outer shell. Disconnect ground wire before fully separating the shell and inner components.

Step 8



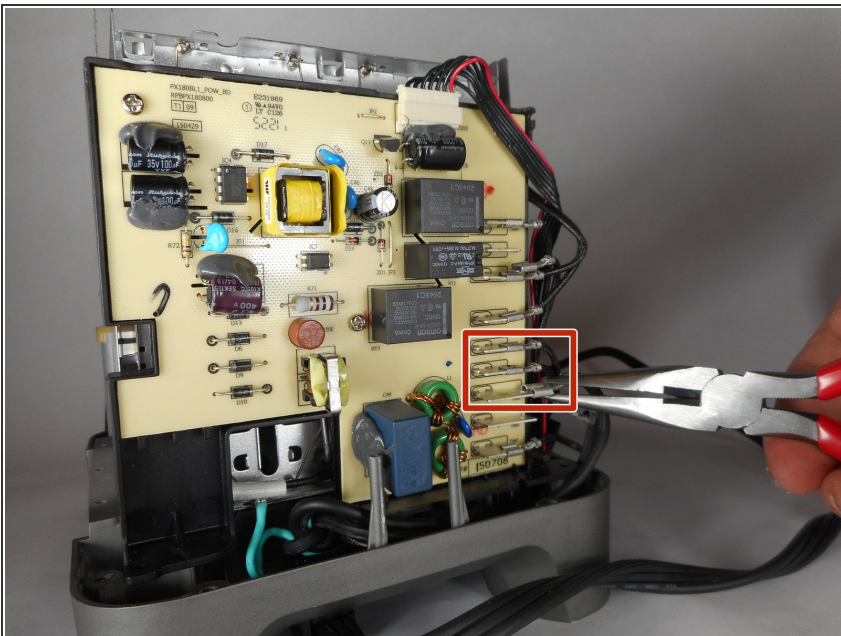
- Disconnect the wire cluster that connects the lights and circuit board by pulling apart the two plastic connectors.
- Remove the outer shell from the device.

Step 9 — Electrical Connection



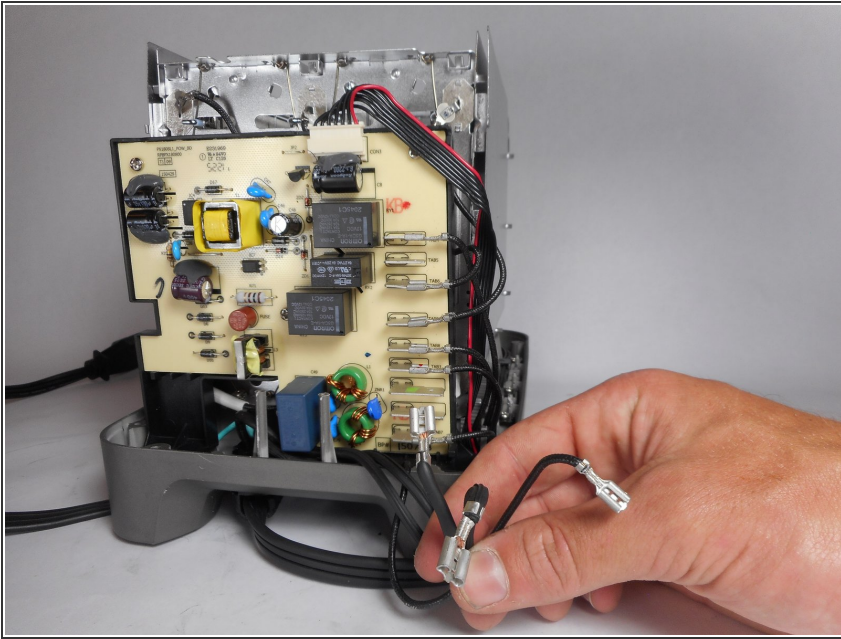
- Unscrew the ground wire using a Tri-point Y1 screwdriver. It is secured with an 8mm screw.

Step 10



- Use pliers to pull apart the three electrical connectors pictured in the graphic.

Step 11



- Replace the electrical connectors.

To reassemble your device, follow these instructions in reverse order.