



Samsung Radiant360 R3 Motherboard Replacement

This guide will take you through the process of...

Written By: Fadi Alzammar



INTRODUCTION

This guide will take you through the process of removing the bottom of the speaker, separating the shell of the enclosure, and accessing the motherboard for removal.

TOOLS:

Spudger (1)

Tweezers (1)

Phillips #1 Screwdriver (1)

Step 1 — Wireless Setup Button and USB Module



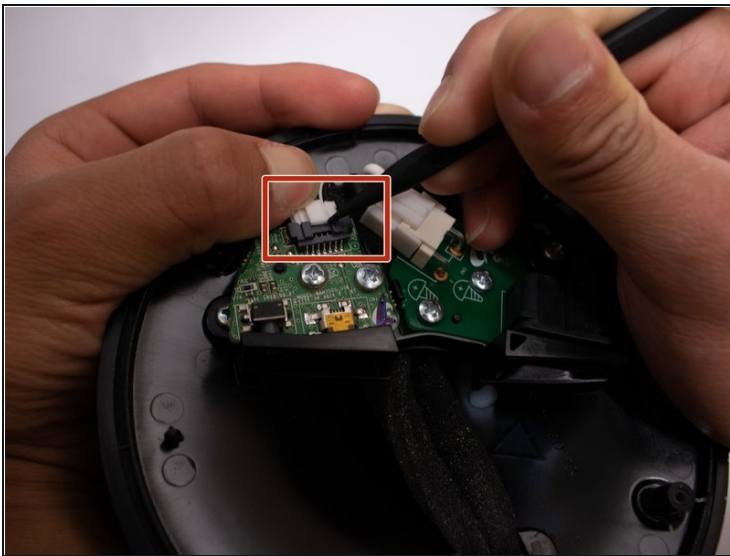
- Flip the device so that the bottom of the device is facing you. Remove these feet with a pair of [tweezers](#).
- Remove the four 10mm long screws with the Phillips #1 screwdriver.

Step 2



- Remove the bottom shell from the speaker.

Step 3



- Remove the connector from the board by pressing down on the center tab while nudging the connector away with a spudger.

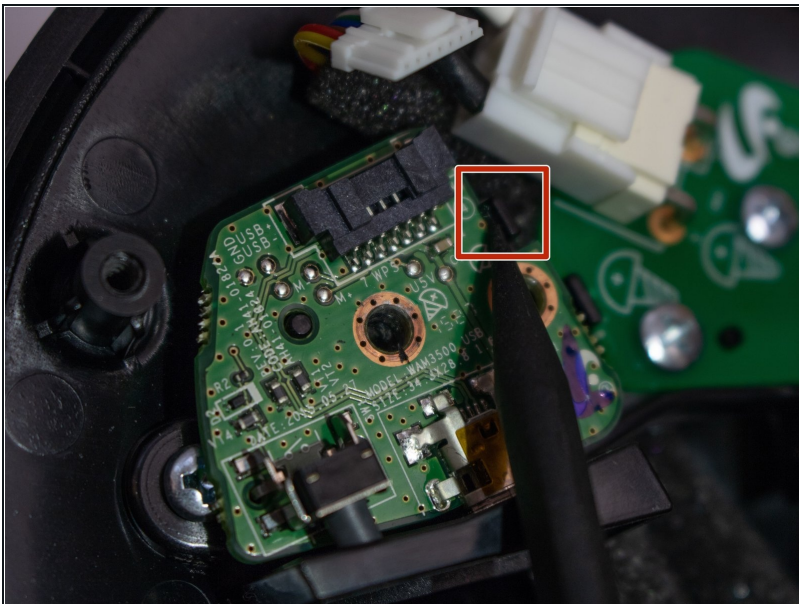
⚠ Be careful not to pull directly on the wires or apply too much pressure, or you risk breaking the connector.

Step 4



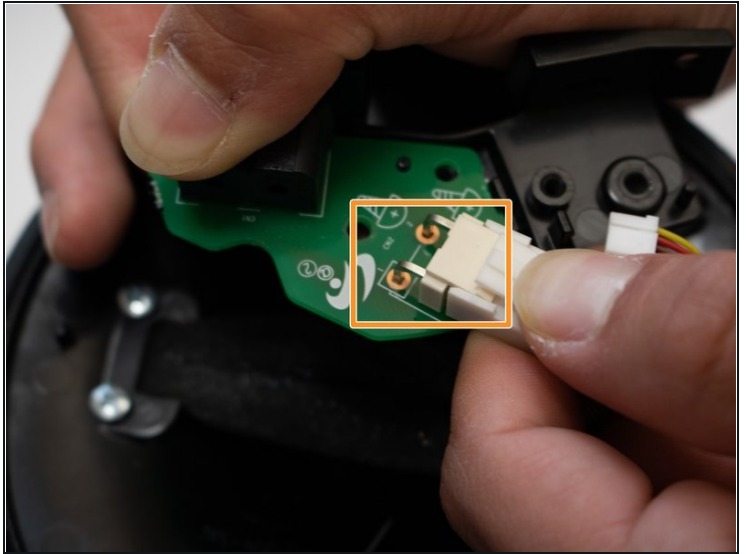
- Remove the two 10mm long screws from the board utilizing the Phillips #1 screwdriver.

Step 5



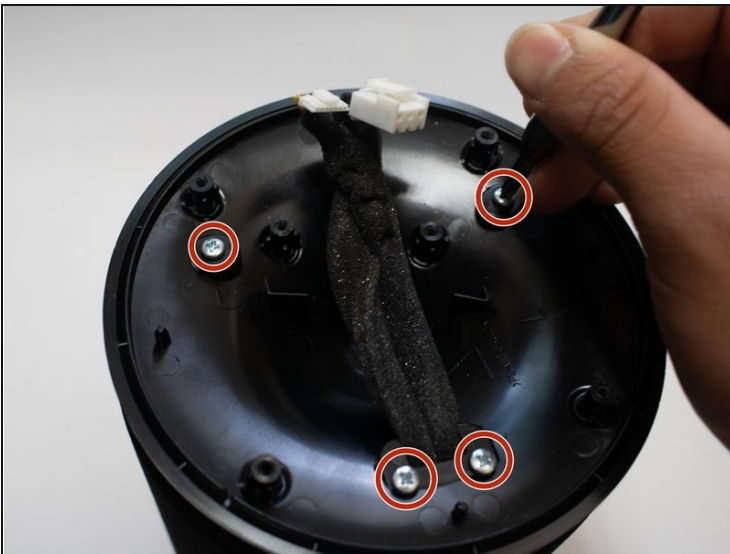
- Use a spudger to press the plastic tab away from the board until the board pops up.
- Remove the board with the USB module from the device.

Step 6 — Wireless Module



- Remove the two 12mm long screws with the Phillips #1 screwdriver.
- Unplug white plug connected to the green circuit board.

Step 7



- Remove the four 12mm long screws with the Phillips #1 screwdriver.
- Remove the cover, and slide the cord through the hole.

Step 8



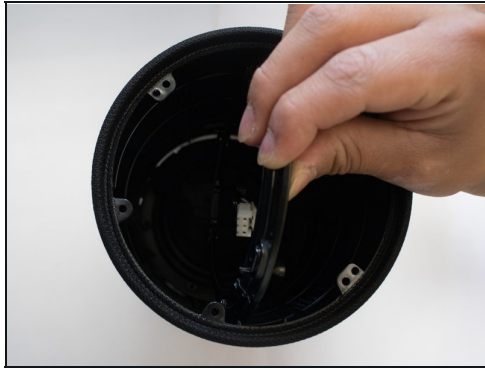
- Remove rubber covers covering the screws with pair of [tweezers](#).
- Remove the six 12mm screws that are under the rubber covers with the Phillips #1 screwdriver.

Step 9



- Remove the unscrewed cover as much as possible.
- ① It is very difficult to get plugs at the end of the cord through the cover without breaking, so just slide to the edge.

Step 10



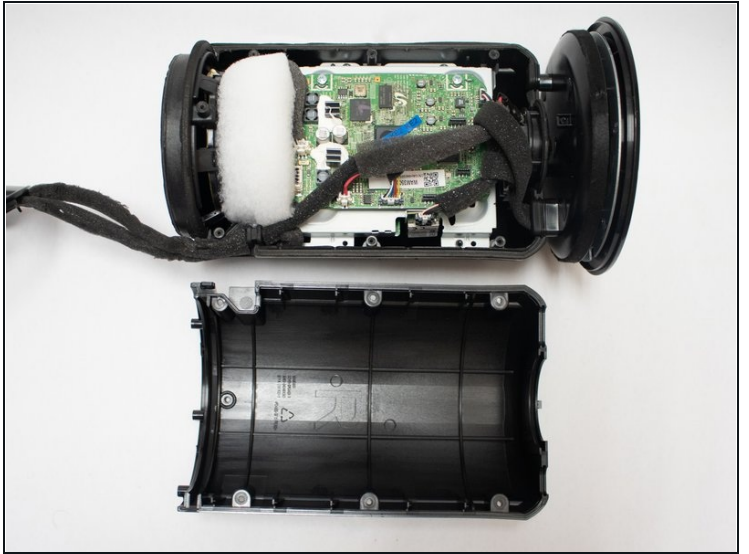
- Push the body out through the outer shell of device.
- ① Carefully push the ring attached to the cable through the shell.

Step 11



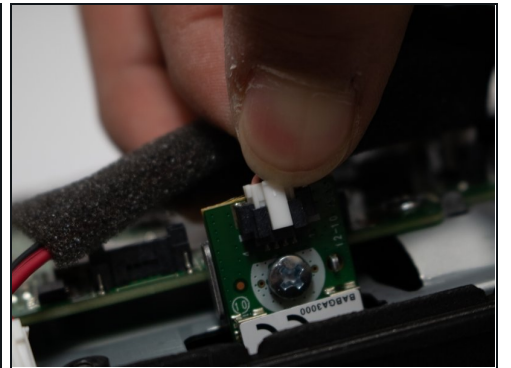
- Remove the eight 12mm long screws around the body with the Phillips #1 screwdriver.

Step 12



- Pry the two halves of the body open using a metal spudger.

Step 13



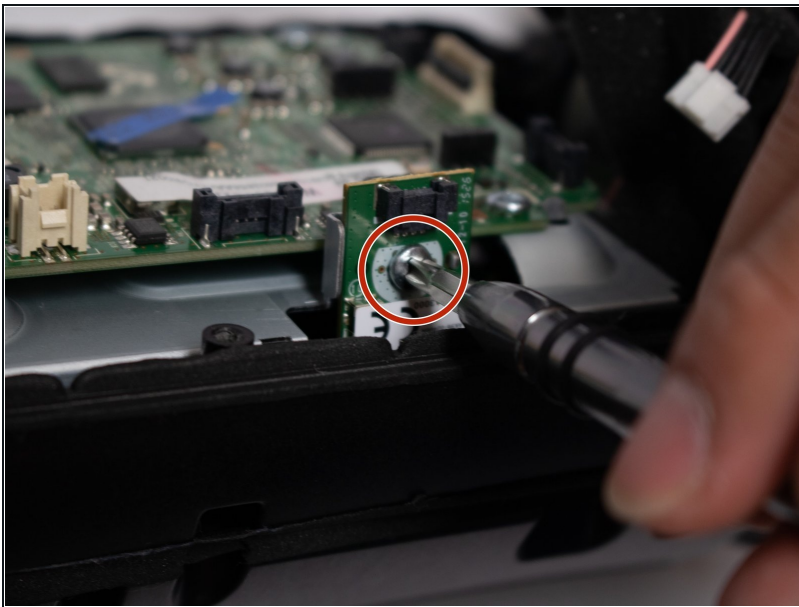
- Remove the plugs located topmost right and closest to the bottom in picture.

Step 14



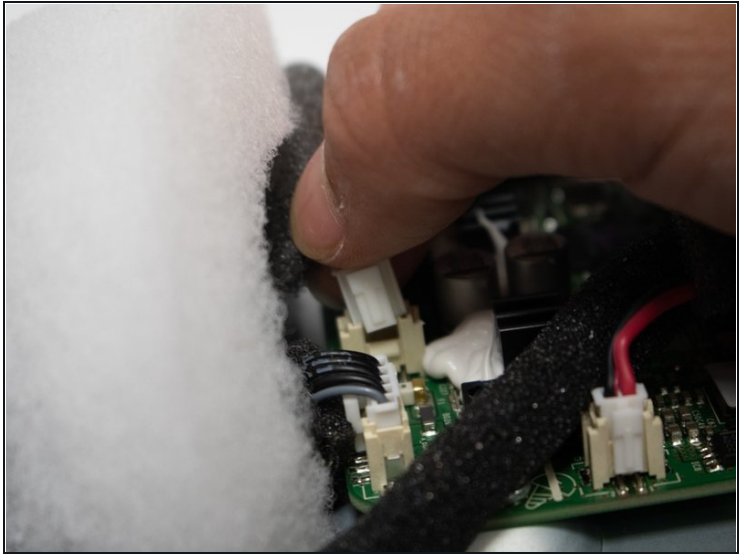
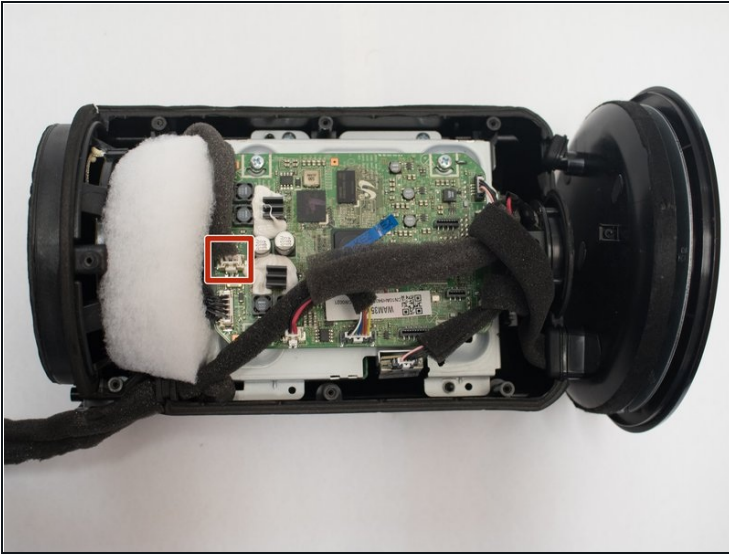
- Remove the four 12mm long screws with the Phillips #1 screwdriver .

Step 15



- Unscrew the four 8mm screws on the side of the motherboard with the Phillips #1 screwdriver .
- Remove the Wireless Module from the device.

Step 16 — Subwoofer



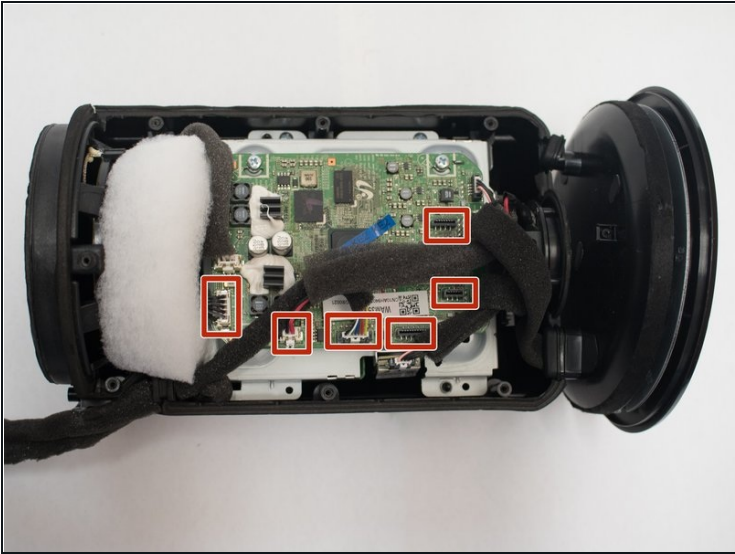
- Disconnect the plug in the device.

Step 17



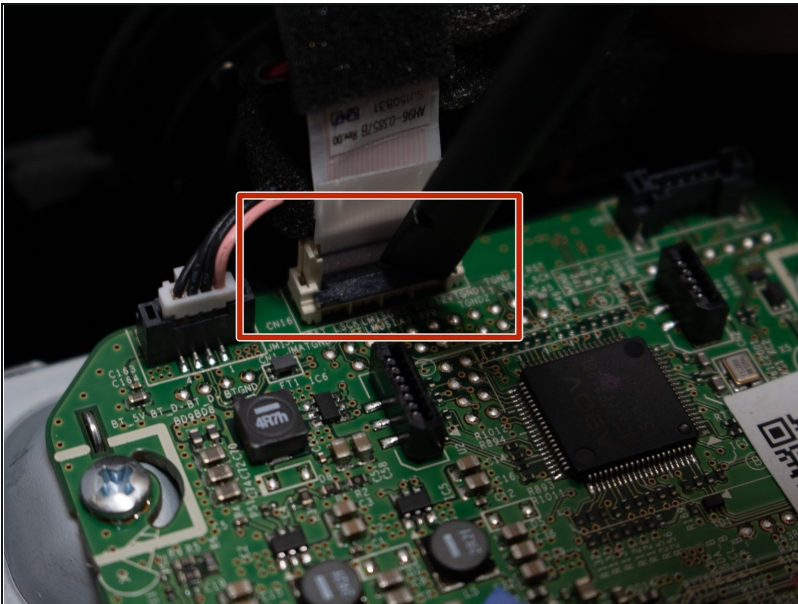
- Slide the subwoofer out of the speaker.

Step 18 — Motherboard



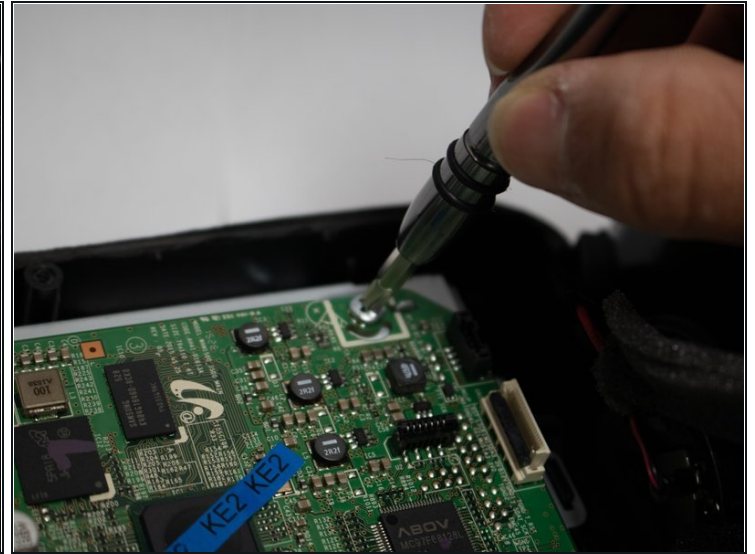
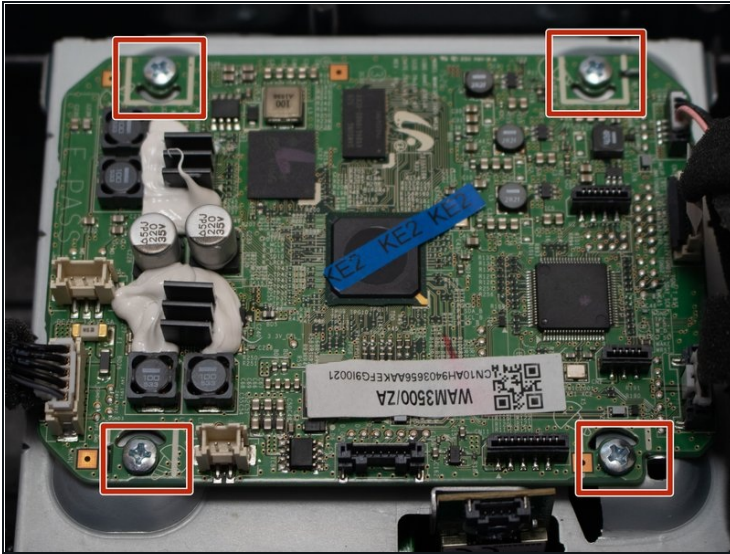
- Disconnect the six plugs on the motherboard.

Step 19



- Remove the ZIF cable.
- Pull up the tab with a spudger, and lift the cable.

Step 20



- Remove the four 12mm screws with the Phillips #1 screwdriver .
- Remove the motherboard from the device.

To reassemble your device, follow these instructions in reverse order.