



HP Elite x2 G1 1012 Battery Replacement

The HP x2 1012 G1 was a tablet-laptop hybrid released in May 2016.

Written By: Colin Mika



INTRODUCTION

If the battery is running low or does not work any more, use this guide to replace it.

For your safety, discharge your battery below 25% before disassembling your device. This reduces the risk of a dangerous thermal event if the battery is accidentally damaged during the repair. If your battery is swollen, [take appropriate precautions](#).



TOOLS:

- [Heavy-Duty Suction Cups \(Pair\)](#) (1)
- [Phillips #00 Screwdriver](#) (1)





PARTS:

- [HP Elite X2 1012 G1 Battery](#) (1)

Step 1 — Display



-  Be sure to power off and unplug your device before you begin your repair.
- With the screen face down, lift up the stand as far as it goes.
-  Make sure not to force it past the resting point.

Step 2



- Use a T5 driver to remove the six screws on the back of the tablet.

Step 3



- After removing the screws, delicately close the stand.
- Flip the tablet on its back so that the screen is facing up.

Step 4



- Use the suction cup to carefully separate the screen from the device. Pull upwards with a fluid and smooth motion.

⚠ Do not lift too fast! There will still be wires connecting the screen to the device. Make sure they are not tampered with.

Step 5



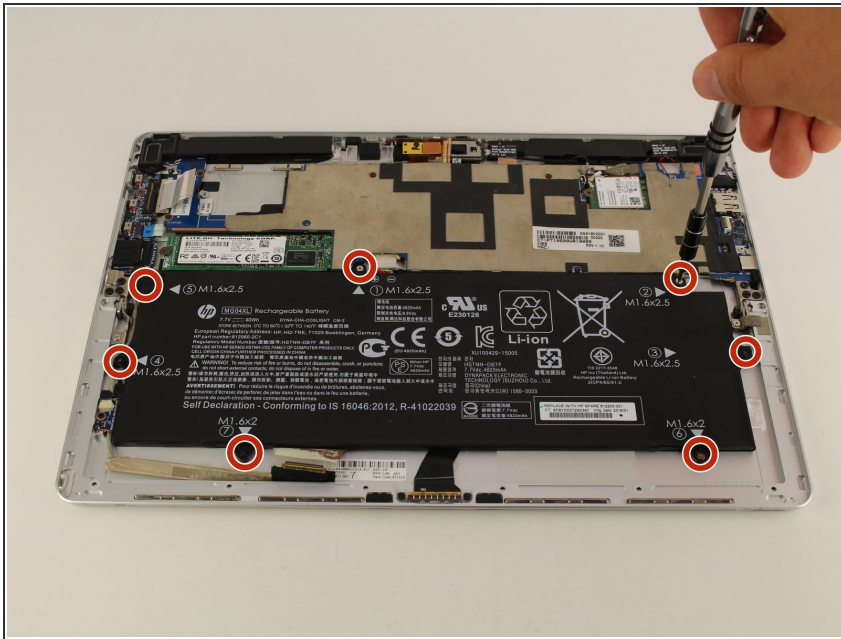
- Remove the tape on the lower left side of the screen.
- Underneath the tape, disconnect the LCM cable, the larger wire that was underneath the tape, from the back of the tablet screen.

Step 6



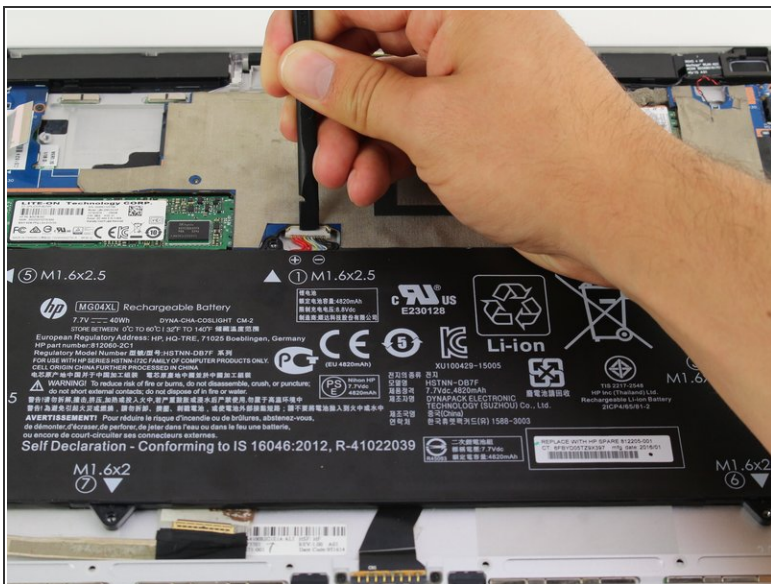
- Disconnect the flex cable from the device using the spudger.
- Remove the Display Assembly from the device.

Step 7 — Battery



- Use a Phillips #00 screwdriver to remove the seven screws holding the battery in place.
- ① Five 1.6x2.5 mm and two 1.6x2 screws should be on the battery.

Step 8



- Disconnect the red, white, and black wires and remove the battery from the device.
- ① Make sure to properly dispose of the dead battery.

To reassemble your device, follow these instructions in reverse order.