



HP Pavilion G6-1d16dx Wireless Card Replacement

How to replace the Wi-Fi card from your HP Pavilion G6-1d16dx laptop.

Written By: Shyanne Bolton



INTRODUCTION

If your Wi-Fi is not working for whatever reason and you need to replace the wireless card, you've come to the right place. This guide outlines the process of replacing the wireless card, which is responsible for Wi-Fi connection. Between the clear steps and pictures, your computer should be connected to the internet in no time.



TOOLS:

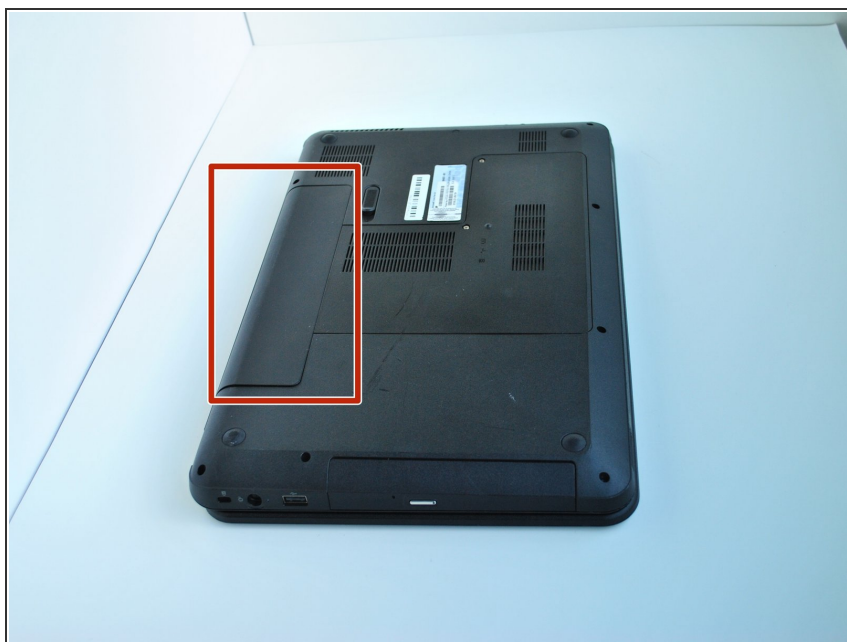
- [Fingers](#) (1)
- [Phillips #000 Screwdriver](#) (1)



PARTS:

- [HP MU09XL Replacement Laptop Battery](#) (1)

Step 1 — Battery



- Flip the computer so that the bottom side is facing up, and locate the battery above the screen hinges.

Step 2



- Slide the switch under the battery compartment to release the battery.

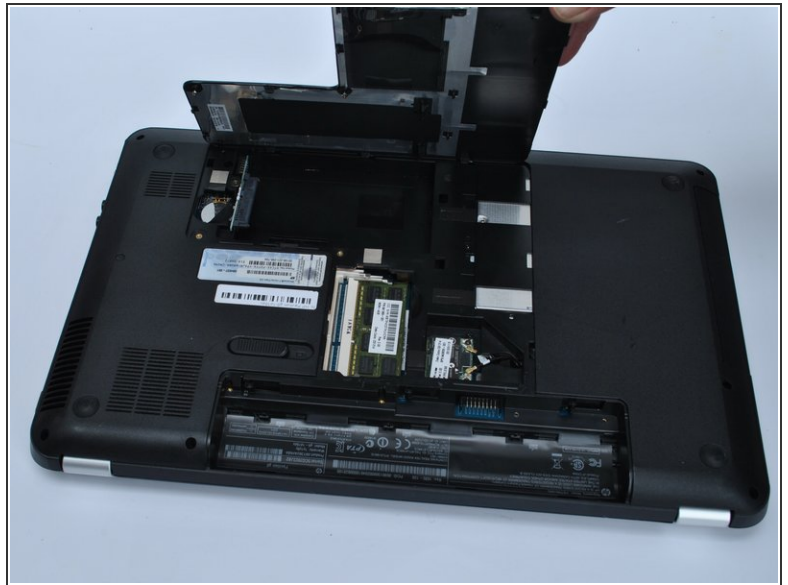
Step 3



- Remove the battery.

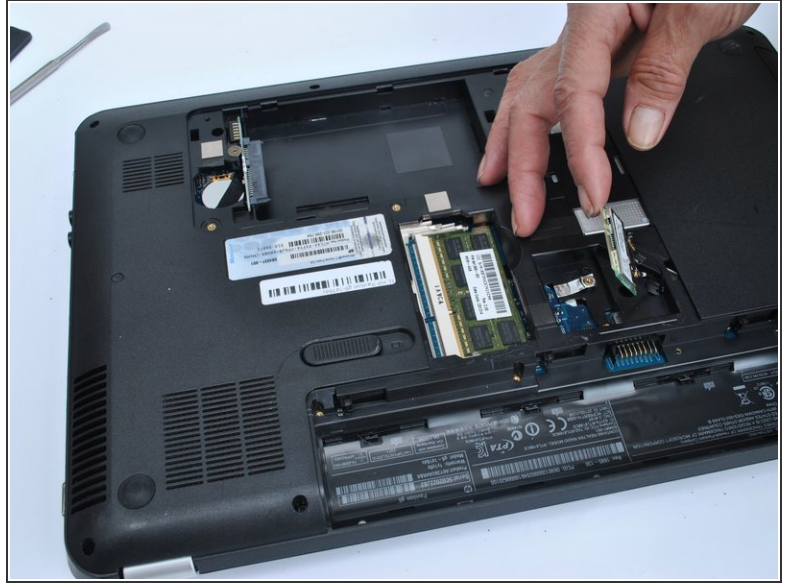
i The battery will have popped out of the compartment when it was released.

Step 4 — Wireless Card



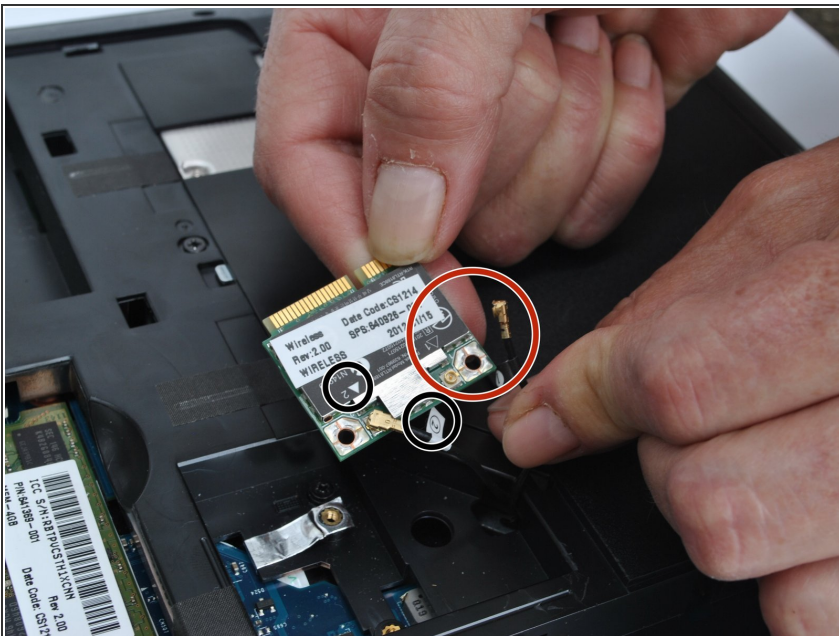
- Unscrew the two captive screws using the Phillips #000 screwdriver.
- ⓘ The screws will not come all the way out; stop when you hear them click.
- Unsnap the protective cover off of the device.
- Locate the wireless card.

Step 5



- Remove the two screws located on the corners of the wireless card, using the Phillips #000 screwdriver.
- Slide the Wi-Fi card out of the socket.

Step 6



- Using your fingers, unsnap the coaxial cable wires from the wireless card.
- ☑ Connect them to the new card based on the attachment points.
- ⓘ These points are indicated by numbered tabs. For example, wire #1 connects to #1 on the wireless card.

To reassemble your device, follow these instructions in reverse order.