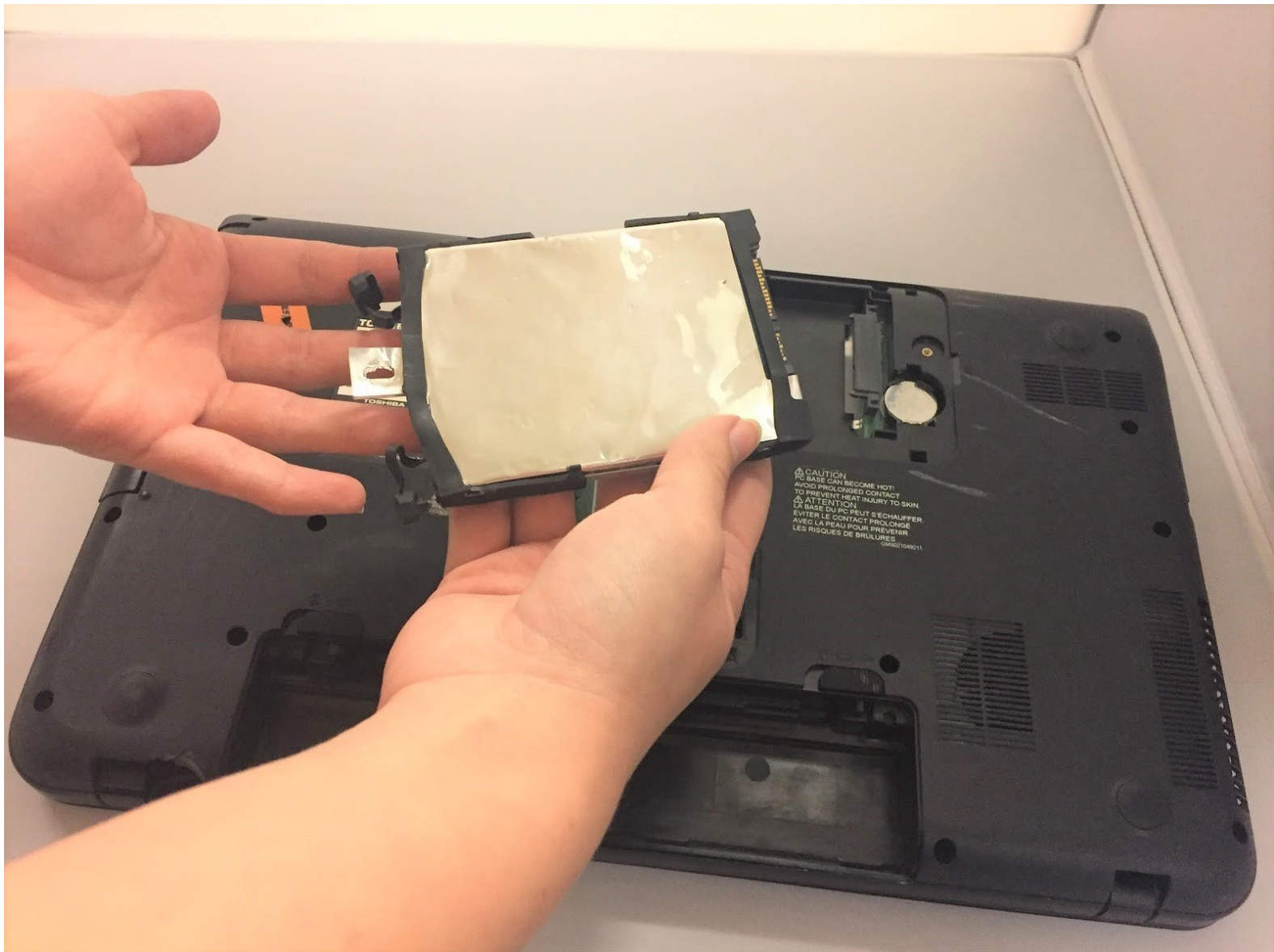




Toshiba Satellite C55-A5302 Hard Drive Replacement

This guide will show you how to replace the HDD on the Toshiba Satellite C55-A5302

Written By: Nicole Hague



INTRODUCTION

In this guide, you will learn how to take off the back cover of the Toshiba Satellite C55-A5302 and replace the HDD.



TOOLS:

- [Phillips #1 Screwdriver](#) (1)
-

Step 1 — Battery



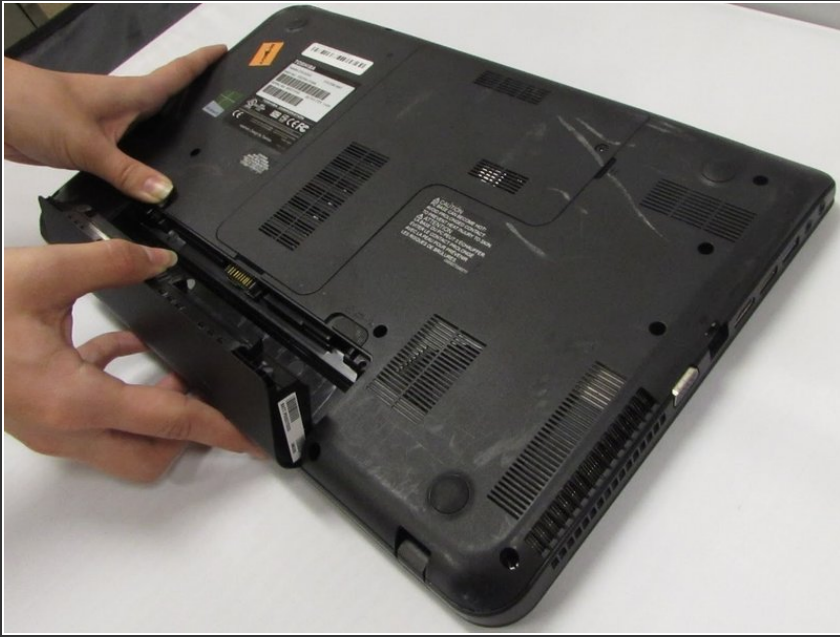
- Power down the laptop and remove all power cords. After this is done, turn the laptop over.

Step 2



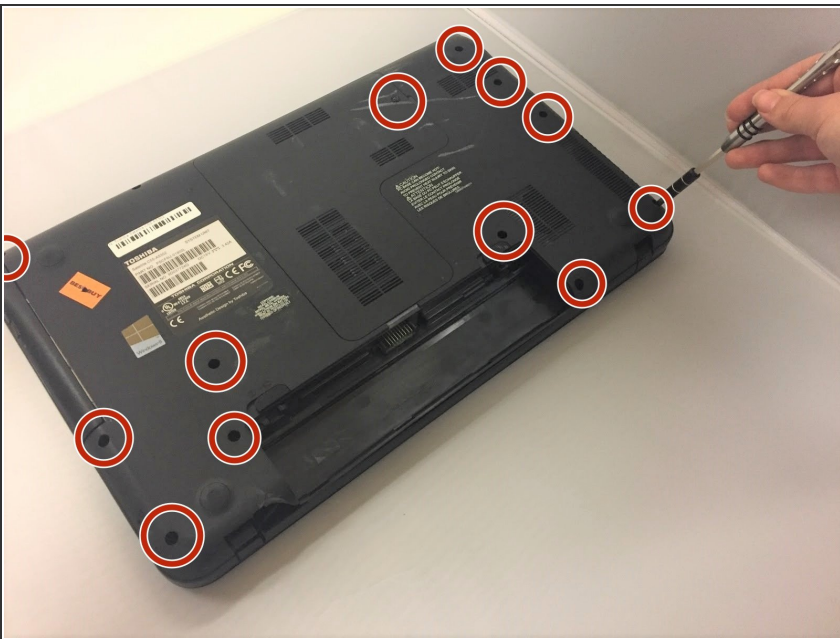
- Slide the battery latch outwards away from the center of the device.
- ⓘ The right latch will slide to the right, and left latch to the left.

Step 3



- Lift and remove the battery from the device.

Step 4 — Hard Drive



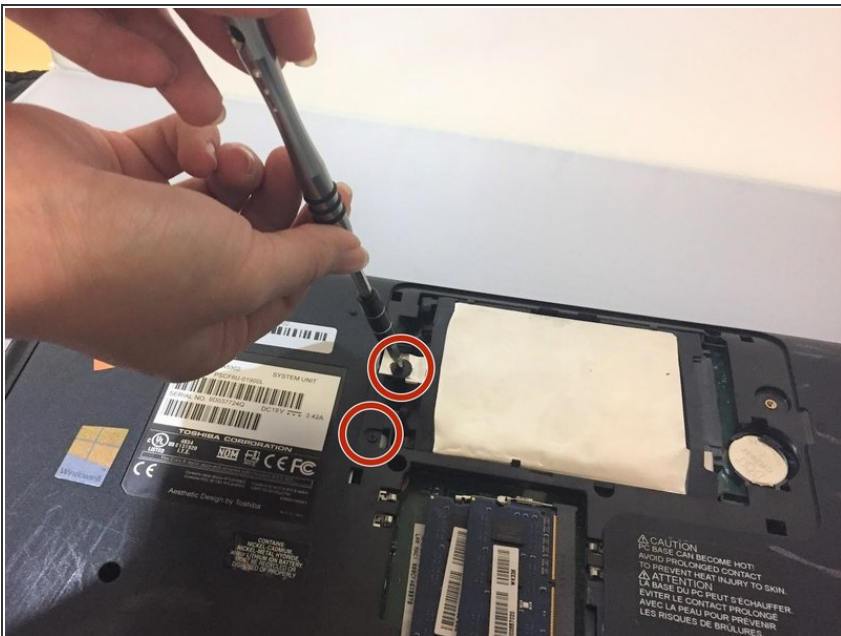
- Use the Phillips #1 screwdriver to unscrew the thirteen screws on the back of your device.

Step 5



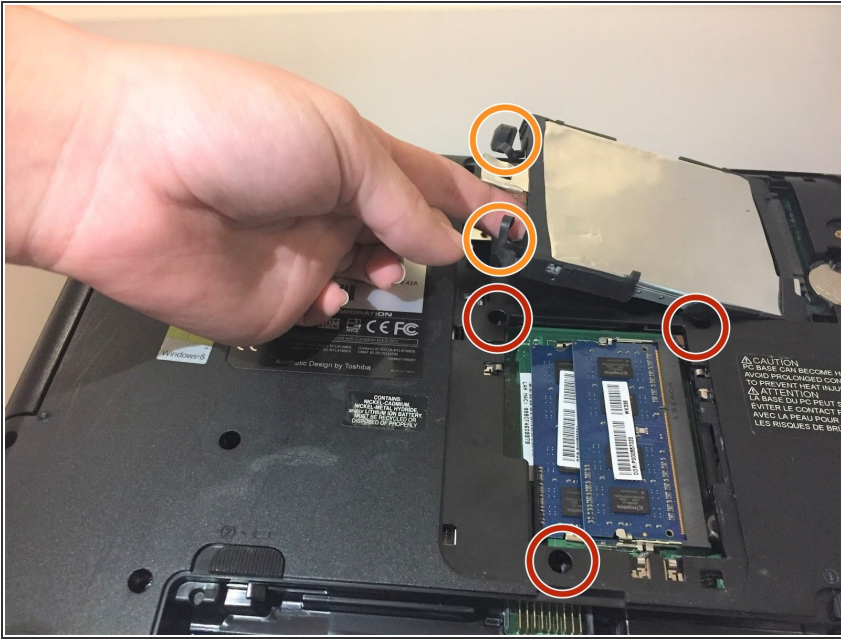
- Remove the middle plastic cover to expose the hard drive.

Step 6



- Using the Phillips #1 screwdriver, remove the two screws holding the hard drive in place.

Step 7



- Remove the three screws using the Phillips #1 screwdriver.
- Insert your fingers into the rubber ends and gently pull the hard drive out of the device.

To reassemble your device, follow these instructions in reverse order.