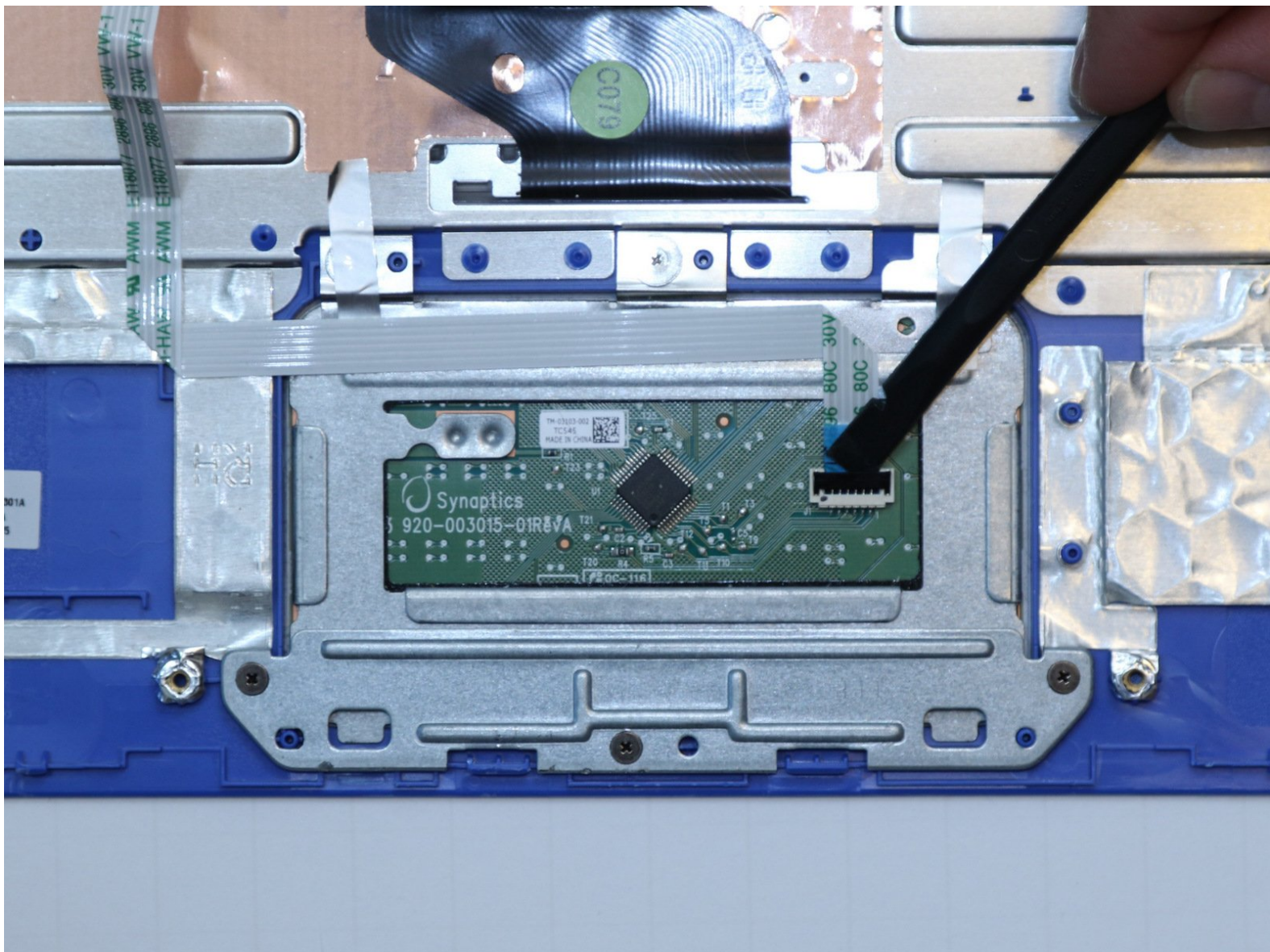




# HP Stream 11-r014wm Trackpad Replacement

Trackpad (mousepad) malfunctioning? Replace your HP Stream trackpad! Model 11-r014wm.

Written By: Anthony R Cardinali



# INTRODUCTION

Tracking left when you want to track right? Change your HP Stream trackpad!



## TOOLS:

- [Spudger](#) (1)
- [Phillips #00 Screwdriver](#) (1)
- [Tweezers](#) (1)



## PARTS:

- [HP Stream 11-r014wm trackpad](#) (1)

## Step 1 — Trackpad



- Use a plastic spudger to remove two oblong screw covers on the bottom of the computer.
  - Use a plastic spudger to remove four rubber feet.
- i** To remove the feet you must break the glue seal holding them down.

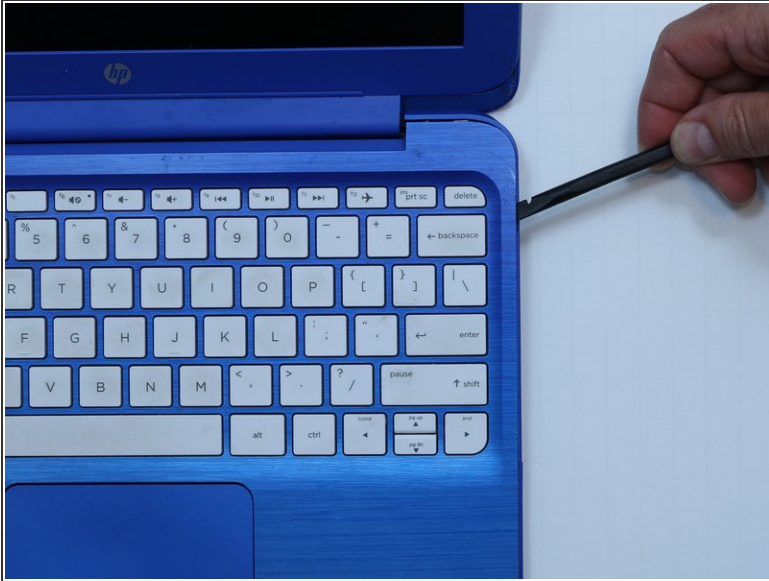
## Step 2



- Remove the eleven 5 millimeter housing screws from the bottom of the computer using a #00 Phillips head screwdriver.

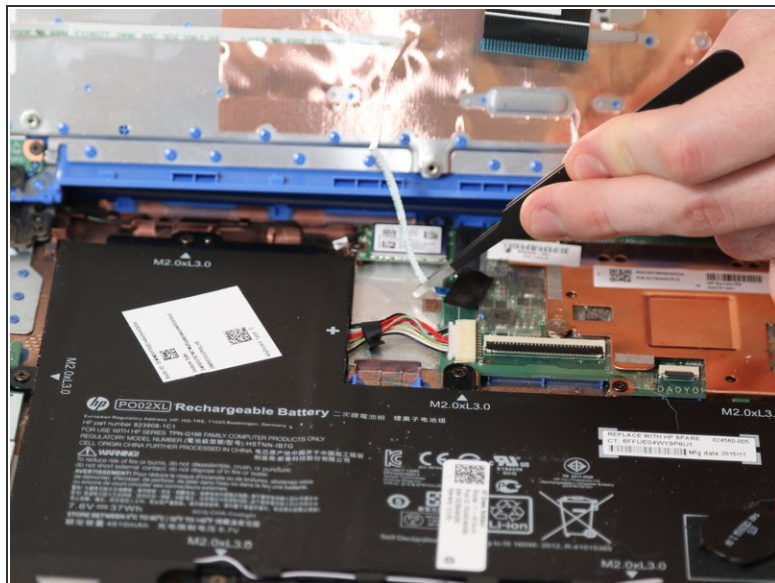
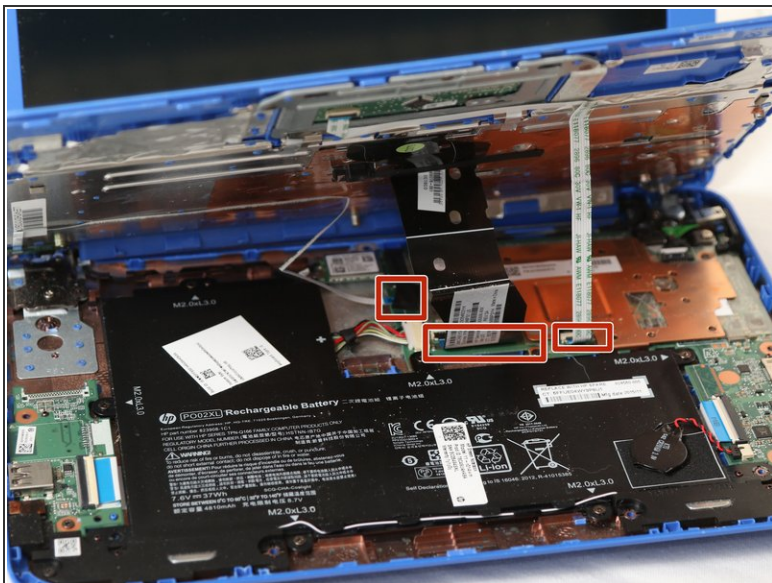


## Step 3



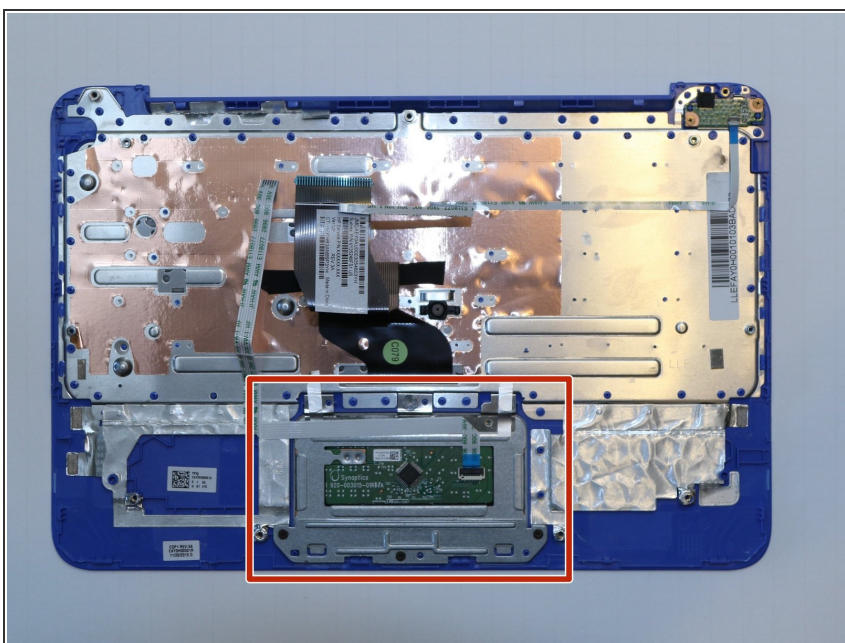
- Turn the computer over and open it.
- Use a plastic spudger to pry the keyboard bezel away from the base. Pry around the edge, being careful not to jam the spudger too far underneath the bezel (potentially damaging internal components).
- ⓘ The bezel is tightest near the hinge.
- ⚠ Once the bezel is free, do not lift it away from the base.

## Step 4



- Identify two ribbon connectors and the ZIF cable underneath the keyboard.
- Use tweezers to disconnect both ribbon cables and the ZIF connector.

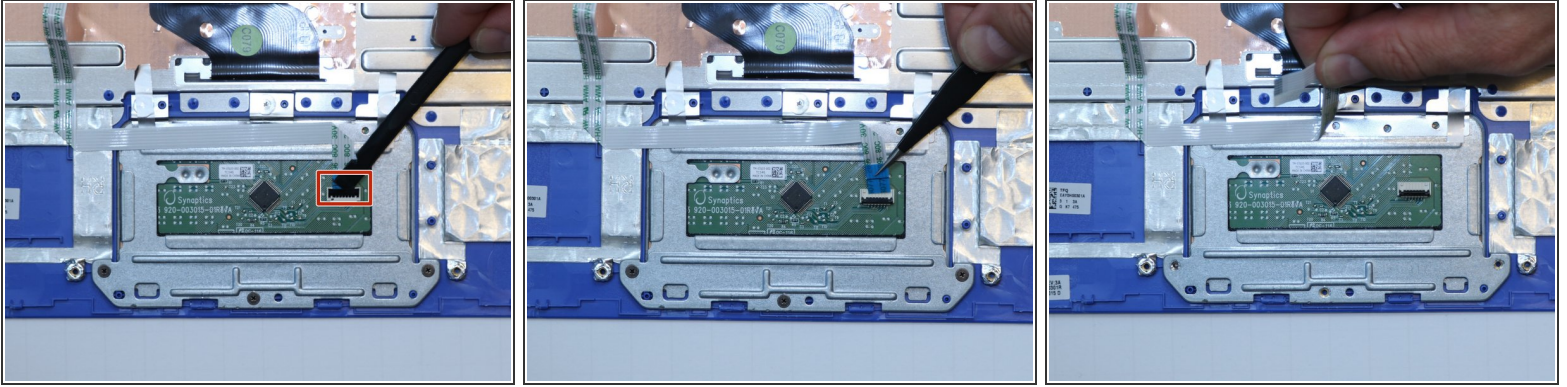
## Step 5




- Flip the keyboard over to locate the trackpad.



## Step 6

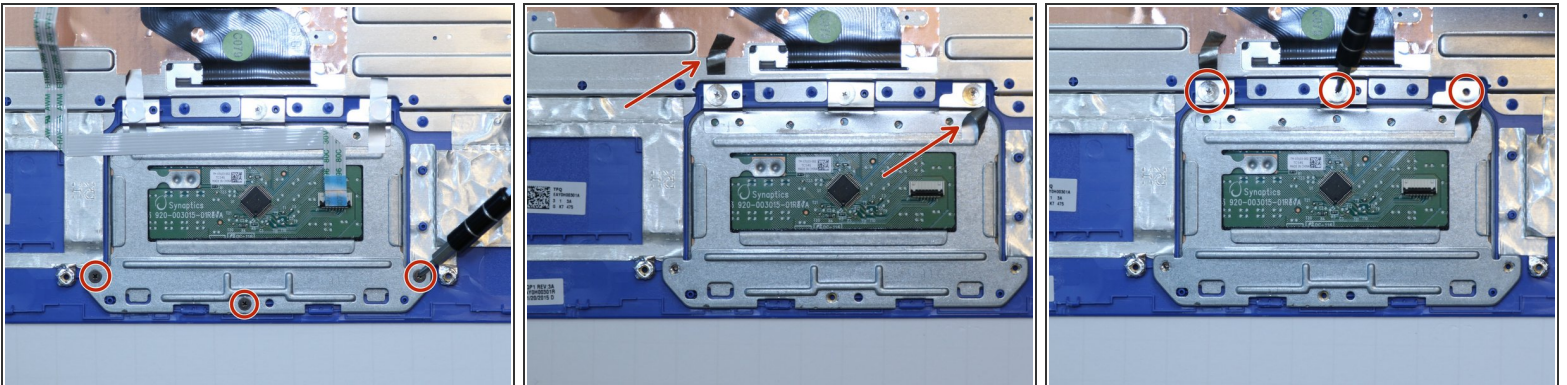


- Use a plastic spudger to remove the black, plastic tab holding down the ZIF connector.

 The black, plastic tab may pop away uncontrollably.

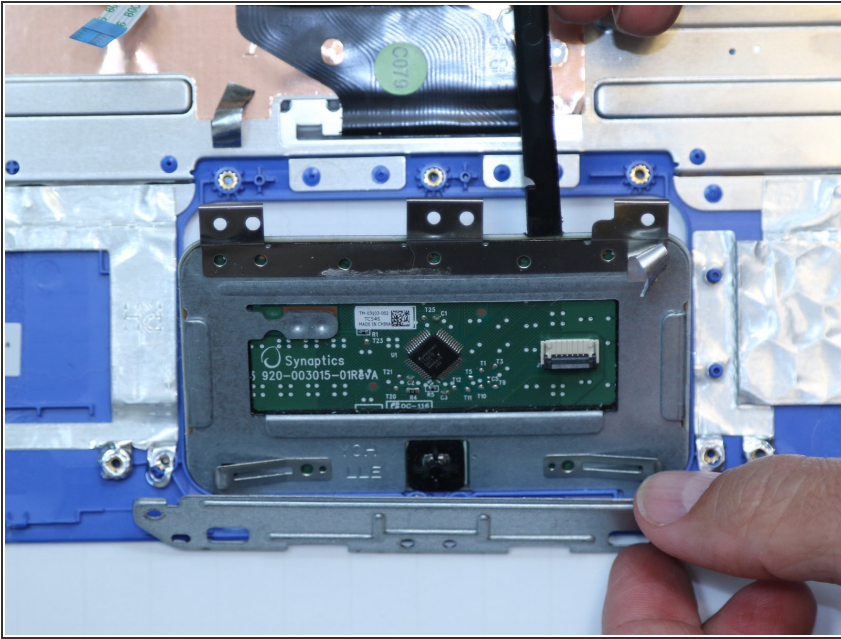
- Use tweezers to lift out the ZIF connector.
- Peel the ZIF cable away from the trackpad.

## Step 7



- Use a Phillips #00 screwdriver to unscrew three 2.25 millimeter screws from the trackpad.
- Peel back the tape covering two screws.
- Use a Phillips #00 screwdriver to unscrew three 1.5 millimeter screws from the trackpad.

## Step 8



- Use a plastic spudger to lift the trackpad away from the keyboard.

To reassemble your device, follow these instructions in reverse order.