



# Lubricate General Electric Telephone 2-9710A Power Dial

This guide will show you how to lubricate the...

Written By: Norberto Sanchez



# INTRODUCTION

This guide will show you how to lubricate the power dial of your General Electric Telephone 2-9710A. Your power dial will operate smooth after completing this guide.

## TOOLS:

Lubricant (1)  
Phillips #1 Screwdriver (1)  
iFixit Opening Tool (1)

## PARTS:

9 Volt Alkaline Battery (2)

## Step 1 — Phone Cord



 **Unplug the device before proceeding.**

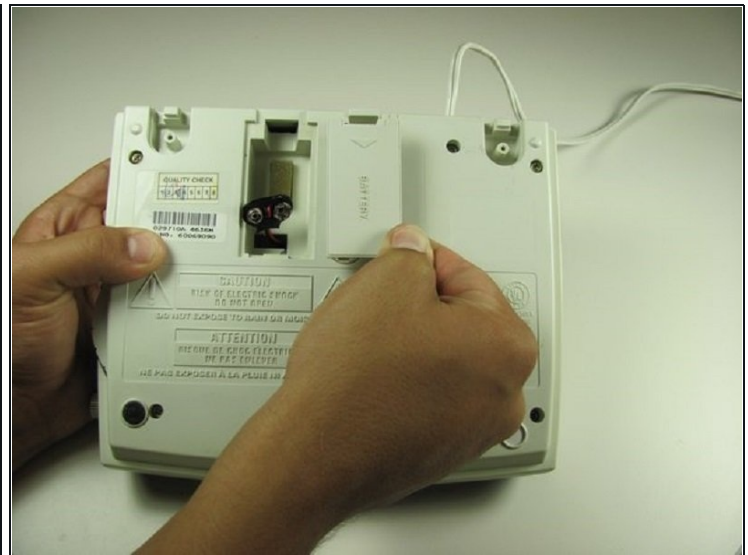
- Using a plastic opening tool, remove the phone cord from the phone jack at the base of the headset.
- ① To release the cable, gently press down on the top plastic tab of the connector.

## Step 2



- Remove the 7.5 mm screw.
- Remove the screw cap.
- Pull up the phone cord to remove it from the base.

## Step 3 — 9V Base Battery



- Remove the battery compartment door (located on the bottom of the radio) by applying thumb pressure to the area indicated on the battery door.
- Slide the door off of the battery compartment.
- Remove the battery from the phone.



## Step 4 — Remove Volume Dial



⚠ Ensure the phone is unplugged from the phone jack and the electrical source.

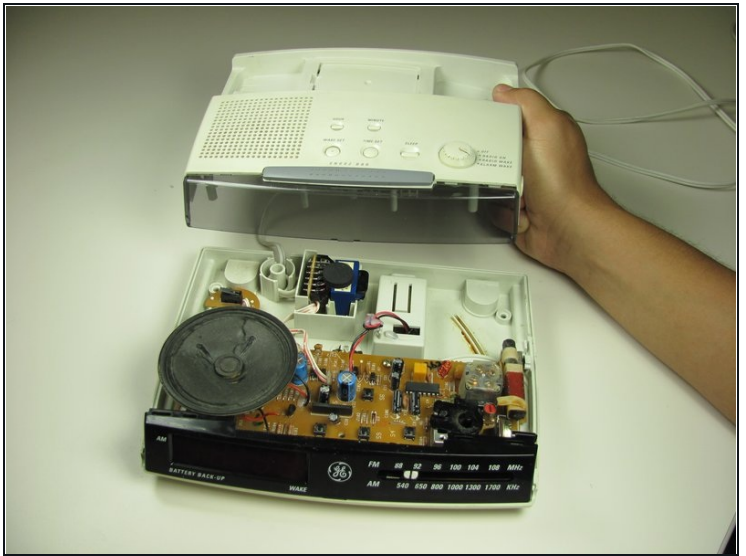
- Locate the volume dial on the right side of the telephone.
- Remove the volume dial by gently grasping it and pulling it away from the base.

## Step 5 — Remove Screws on the Back



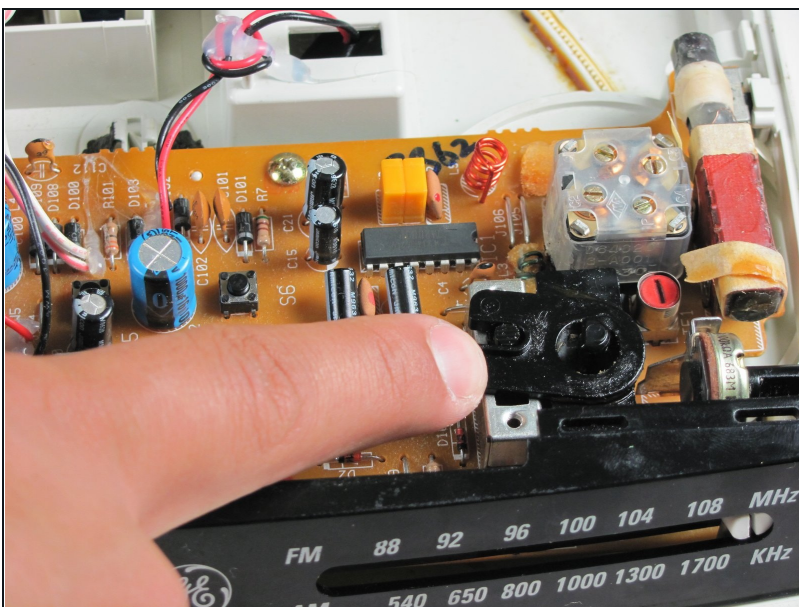
- Remove the three 12 mm screws with a Phillips #1 screwdriver.
- Remove the three 18 mm screws with a Phillips #1 screwdriver.

## Step 6 — Pry the Back Off



- Pry off the base shell using a plastic opener tool.
  - Set the shell aside.
- ① You now have access to the internal components of the General Electric Telephone 2-9710A.

## Step 7 — Lubricate General Electric Telephone 2-9710A Power Dial



- Inside the base shell on the circuit board, lubricate the power switch.

⚠ Make sure the lubricant does not get on the circuit board. This can damage the circuit board.

---

To reassemble your device, follow these instructions in reverse order.