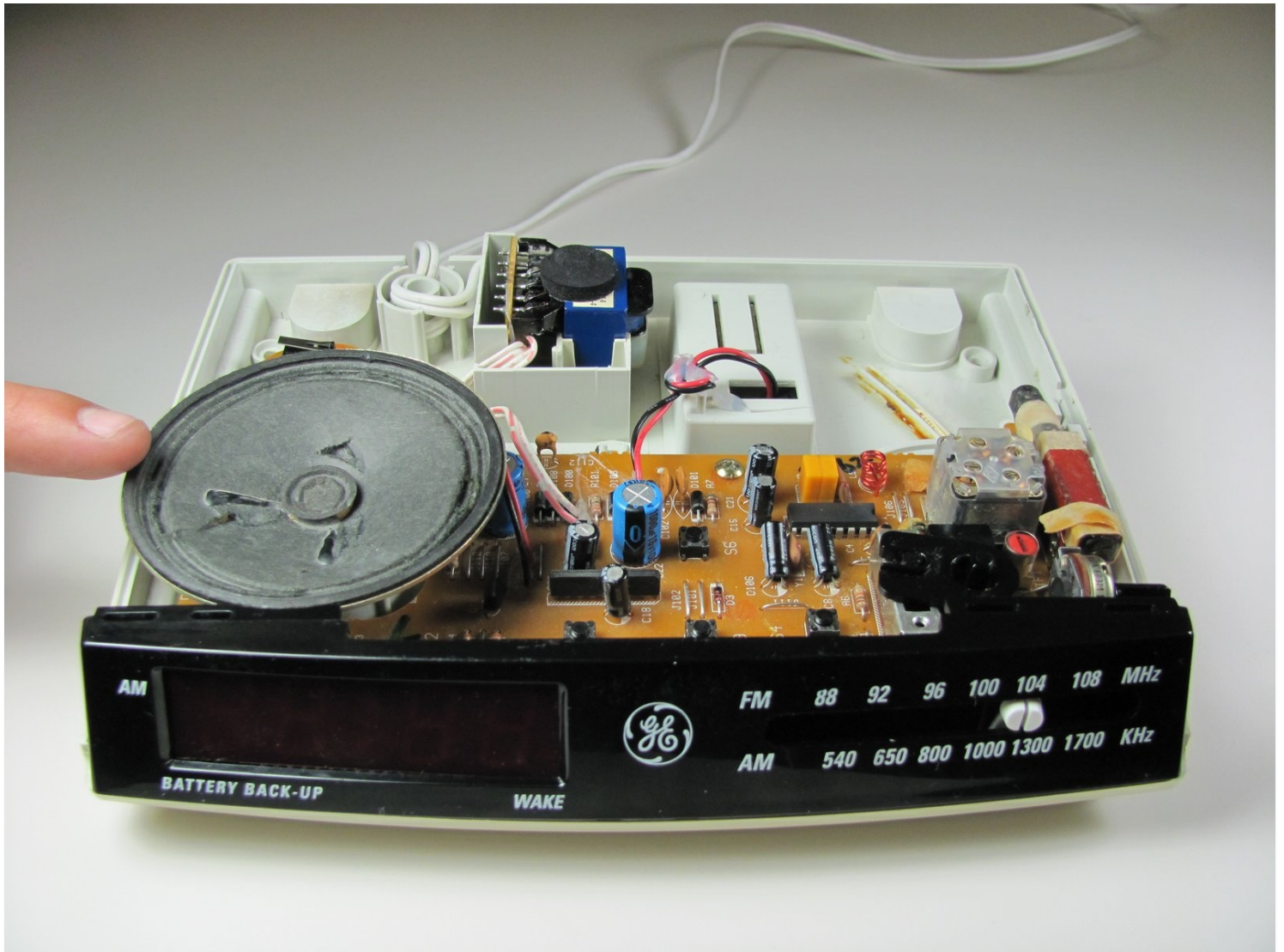




General Electric Telephone 2-9710A Base Speaker Replacement

This guide is to replace the speaker located...

Written By: Norberto Sanchez



INTRODUCTION

This guide is to replace the speaker located inside the phone base

TOOLS:

- Wire Stripper (1)
- Phillips #1 Screwdriver (1)
- Flush Cutter (1)
- iFixit Opening Tool (1)
- Soldering Iron (1)
- Lead-Free Solder (1)

Step 1 — Phone Cord



 **Unplug the device before proceeding.**

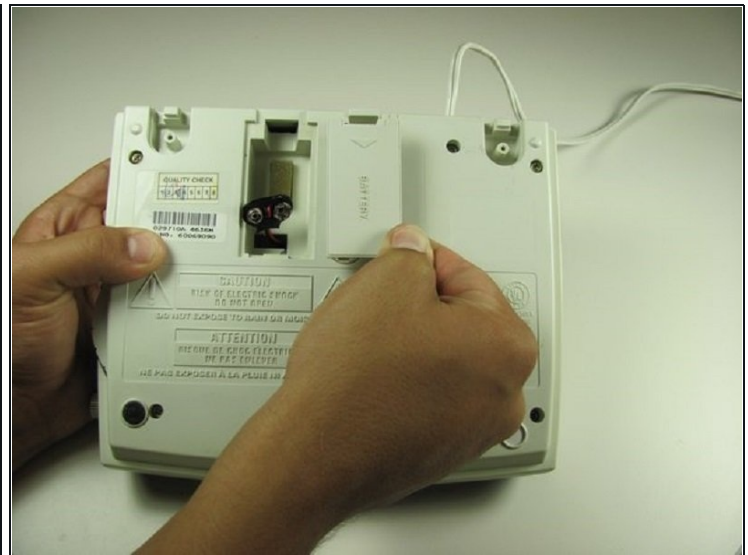
- Using a plastic opening tool, remove the phone cord from the phone jack at the base of the headset.
- ① To release the cable, gently press down on the top plastic tab of the connector.

Step 2



- Remove the 7.5 mm screw.
- Remove the screw cap.
- Pull up the phone cord to remove it from the base.

Step 3 — 9V Base Battery



- Remove the battery compartment door (located on the bottom of the radio) by applying thumb pressure to the area indicated on the battery door.
- Slide the door off of the battery compartment.
- Remove the battery from the phone.

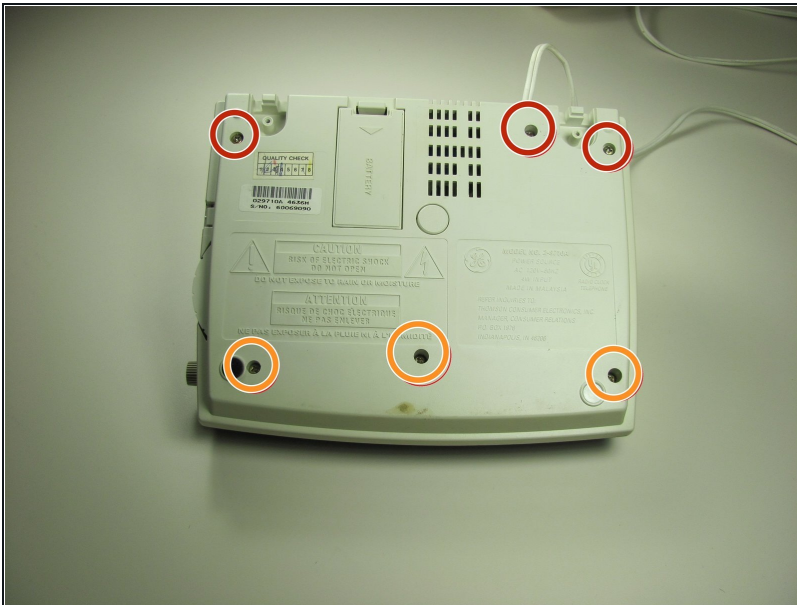
Step 4 — Remove Volume Dial



⚠ Ensure the phone is unplugged from the phone jack and the electrical source.

- Locate the volume dial on the right side of the telephone.
- Remove the volume dial by gently grasping it and pulling it away from the base.

Step 5 — Remove Screws on the Back



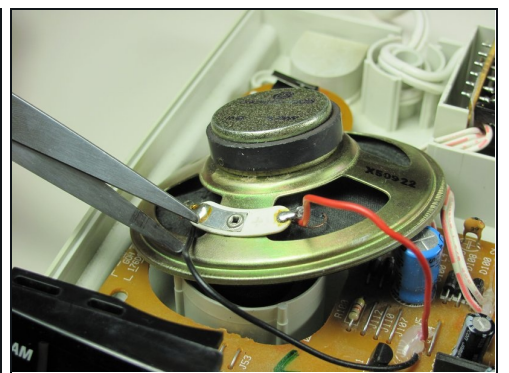
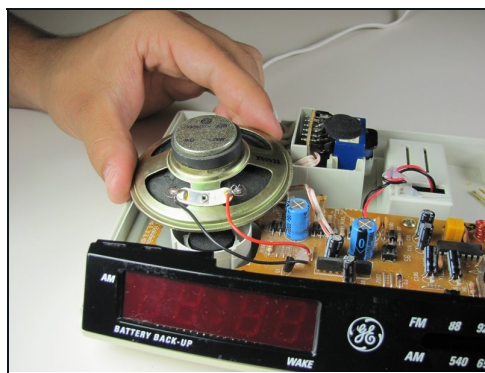
- Remove the three 12 mm screws with a Phillips #1 screwdriver.
- Remove the three 18 mm screws with a Phillips #1 screwdriver.

Step 6 — Pry the Back Off



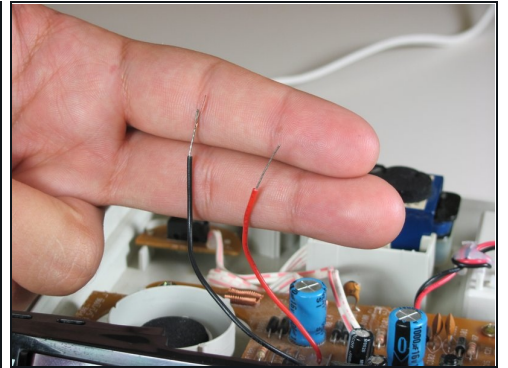
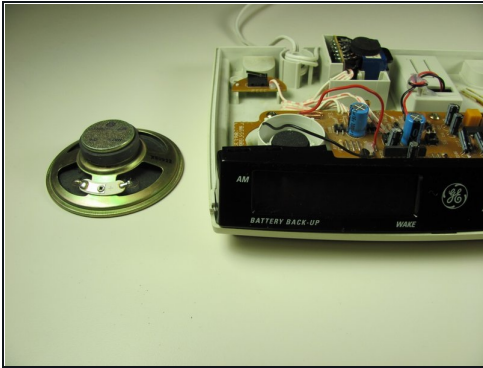
- Pry off the base shell using a plastic opener tool.
 - Set the shell aside.
- ① You now have access to the internal components of the General Electric Telephone 2-9710A.

Step 7 — Base Speaker



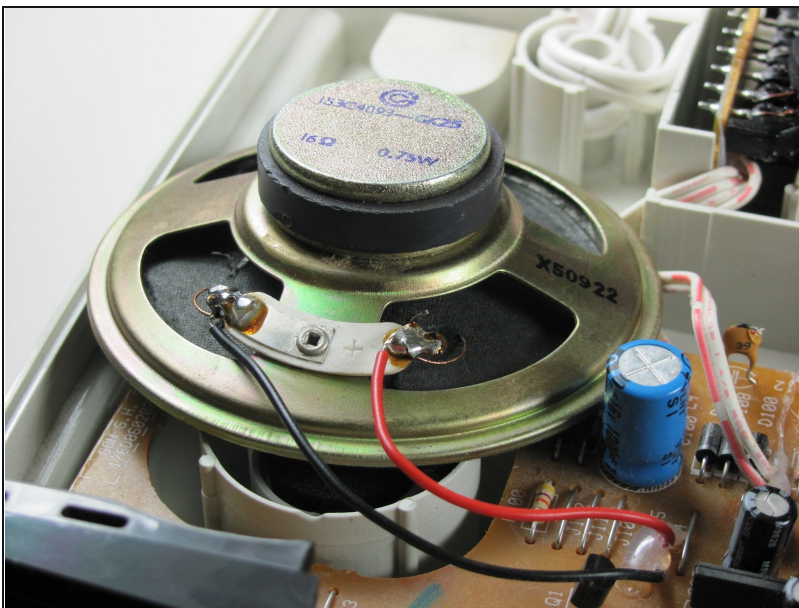
- Slightly pull out speaker.
- Cut wire as close as speaker as possible with wire cutters.
- Remove speaker.

Step 8



- Strip the wire half an inch using wire strippers for a 24 gauge wire.

Step 9



- Solder on the new speaker.
- Please visit [How to Solder](#) to learn more about soldering.

To reassemble your device, follow these instructions in reverse order.