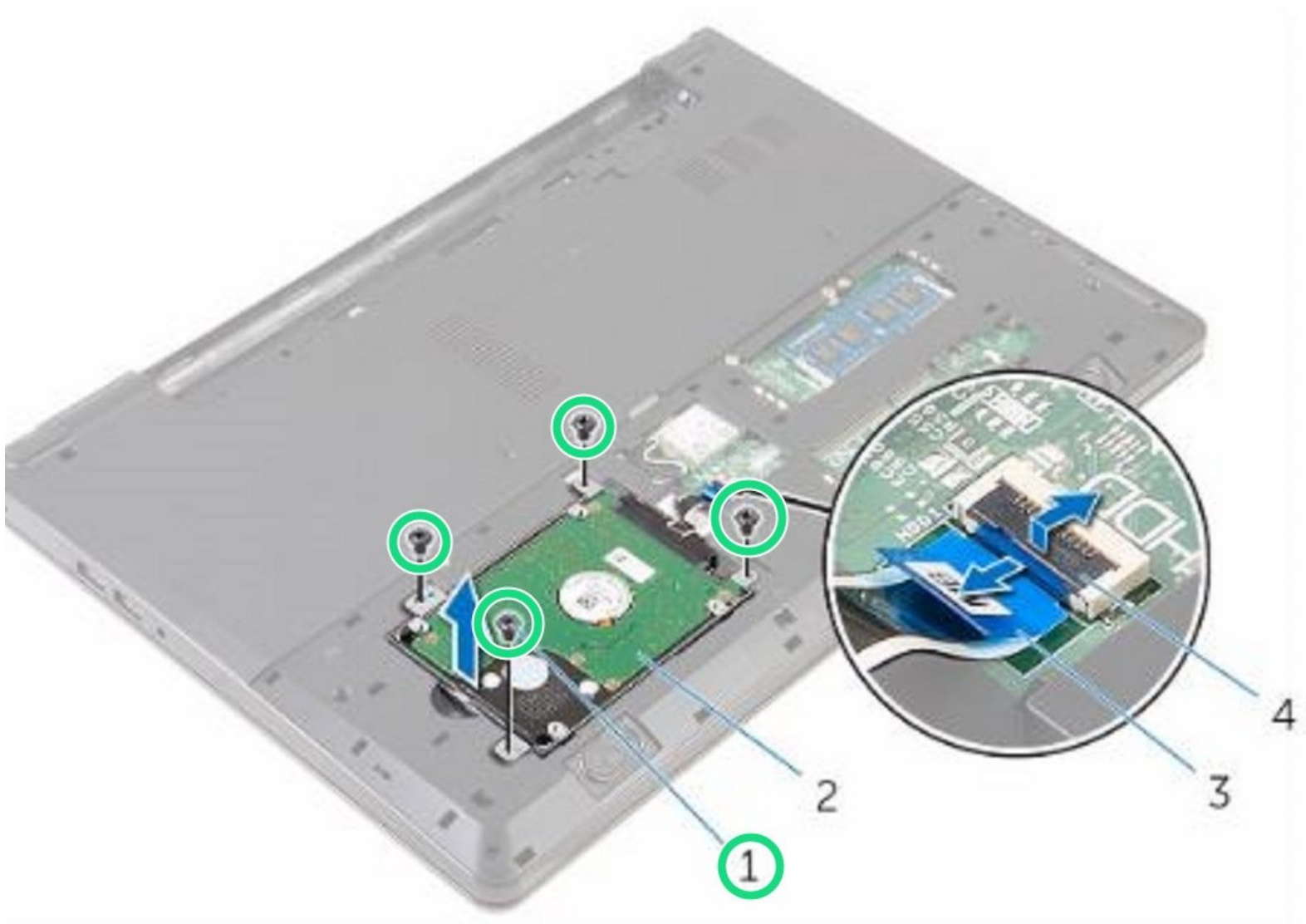




Dell Inspiron 15 3559 Hard Drive Replacement

Written By: Terrence15



INTRODUCTION

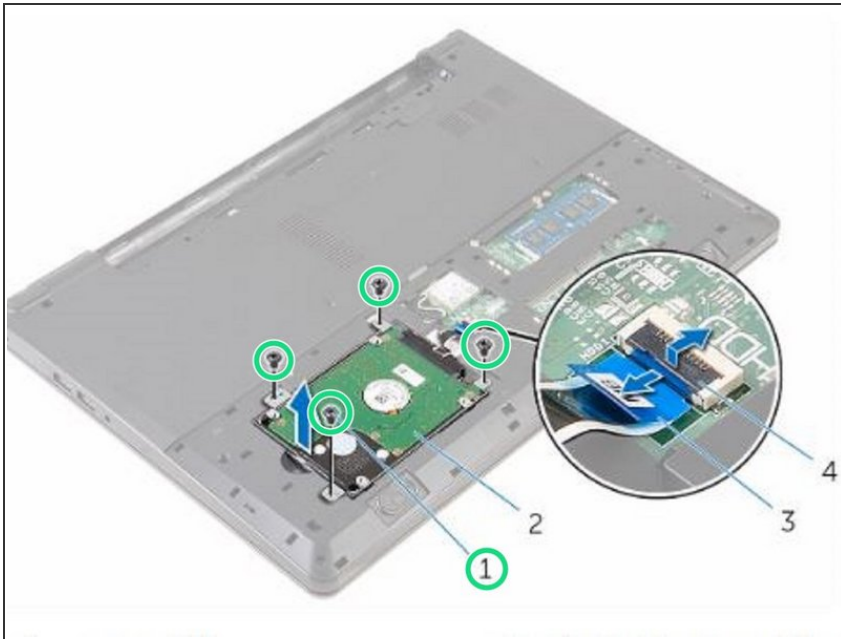
In this guide, we will be showing you how to remove and replace the Hard Drive.



TOOLS:

- [Phillips #0 Screwdriver](#) (1)
-

Step 1 — Remove the Screws

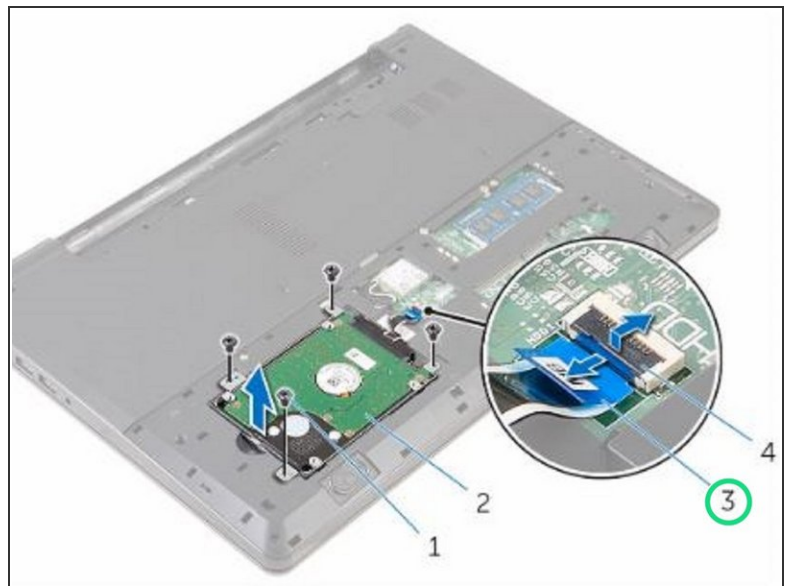
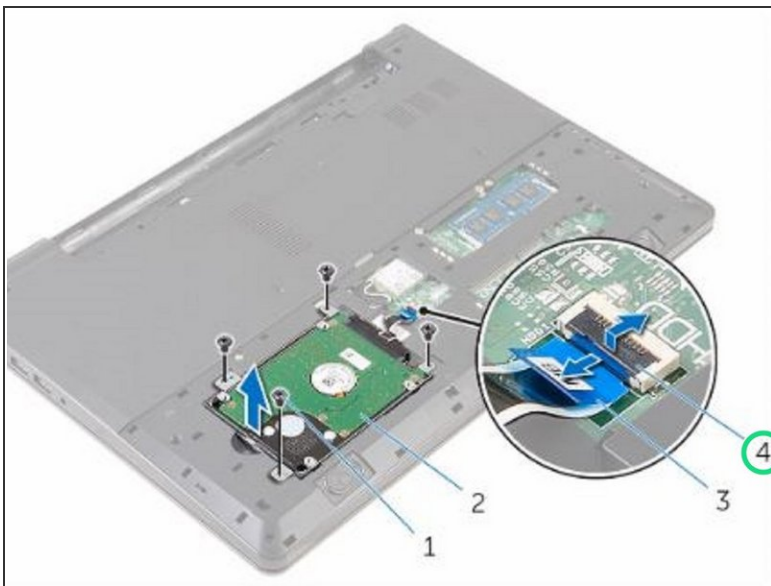


⚠ WARNING: Before working inside your computer, read the safety information that shipped with your computer and follow the steps in [Before Working Inside Your Computer](#). After working inside your computer, follow the instructions in [After Working Inside Your Computer](#).

⚠ CAUTION: Hard drives are fragile. Exercise care when handling the hard drive.

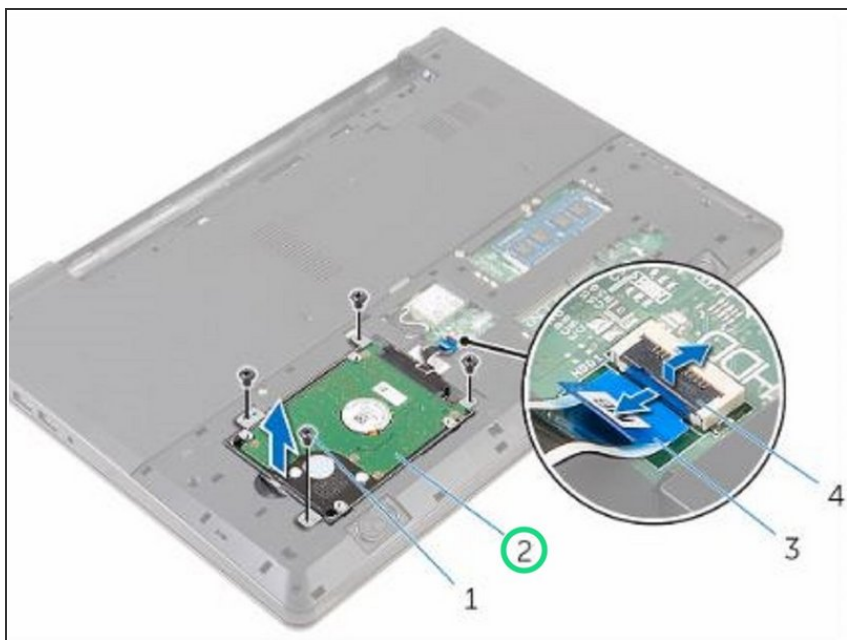
- Remove the screws that secure the hard-drive assembly to the computer base.

Step 2 — Lifting the Latch



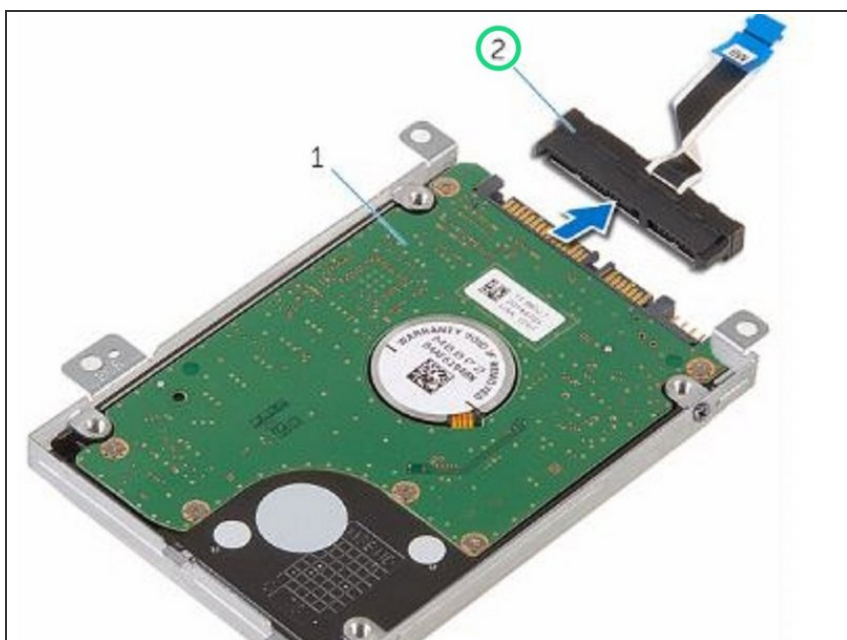
- Lift the latch and disconnect the hard-drive cable from the system board.

Step 3 — Lifting the Hard-Drive Assembly



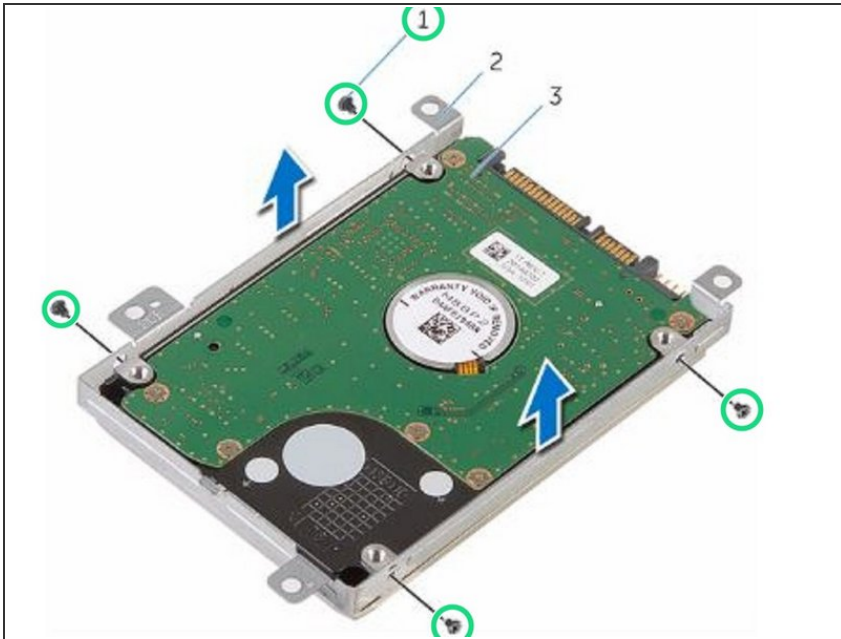
- Lift the hard-drive assembly off the computer base.

Step 4 — Disconnecting the Interposer



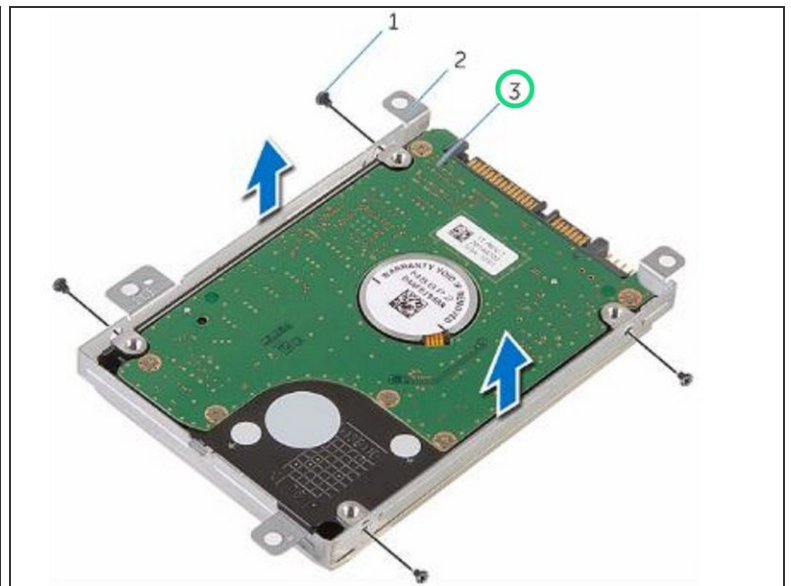
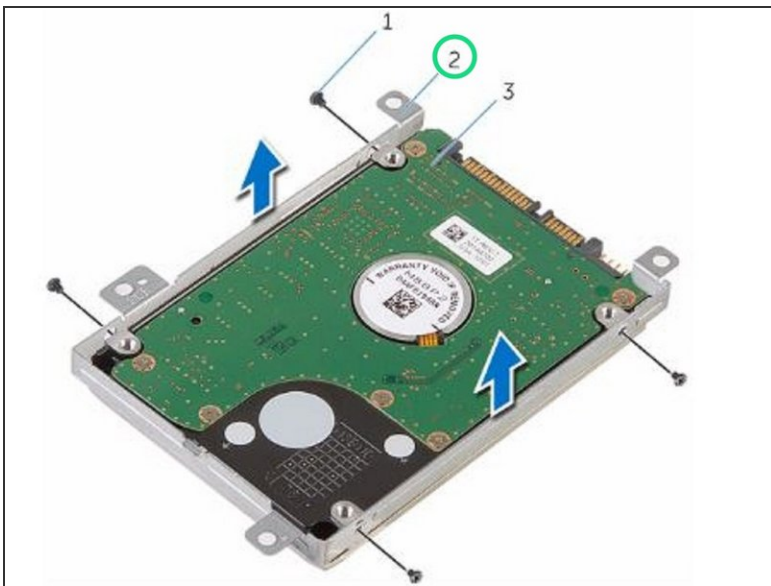
- Disconnect the interposer from the hard drive.

Step 5 — Remove the Screws



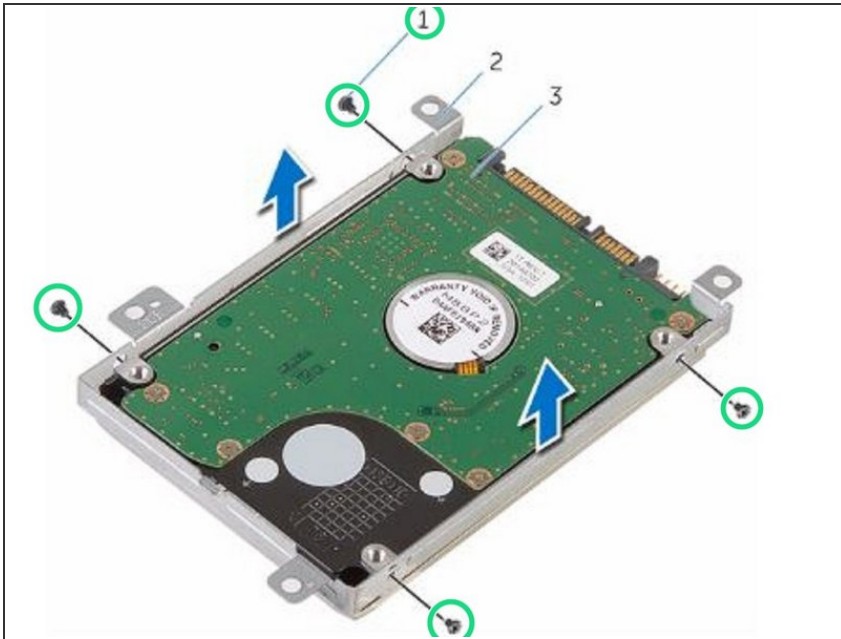
- Remove the screws that secure the hard-drive bracket to the hard drive and lift the hard-drive bracket off the hard drive.

Step 6 — Placing the Hard Drive



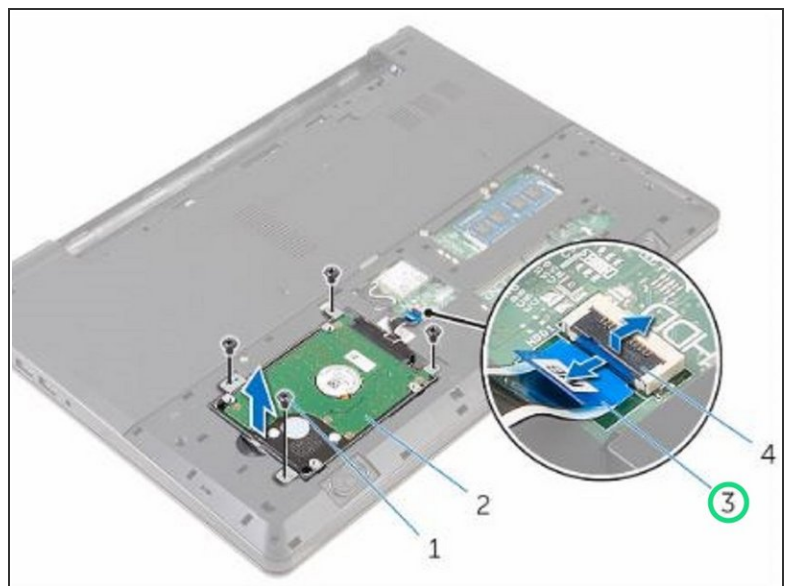
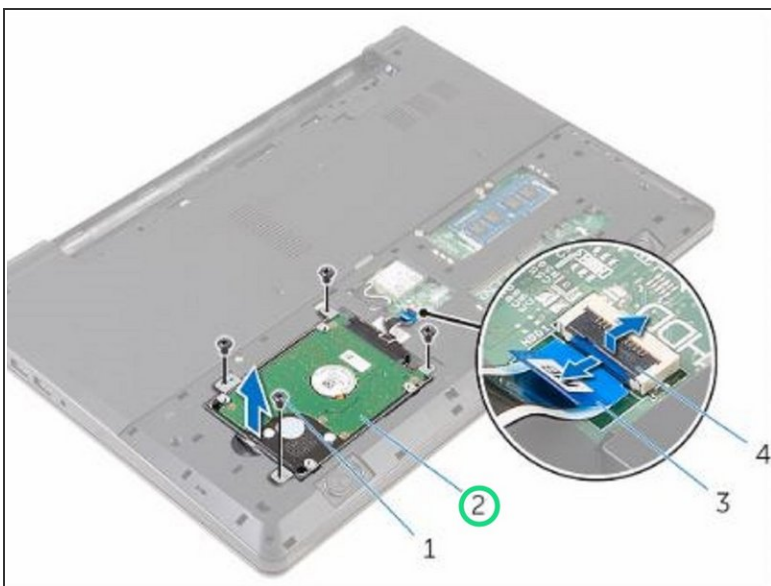
- Place the hard-drive bracket over the **NEW** hard drive and align the screw holes on the hard-drive bracket with the screw holes on the hard drive.

Step 7 — Replace the Screws



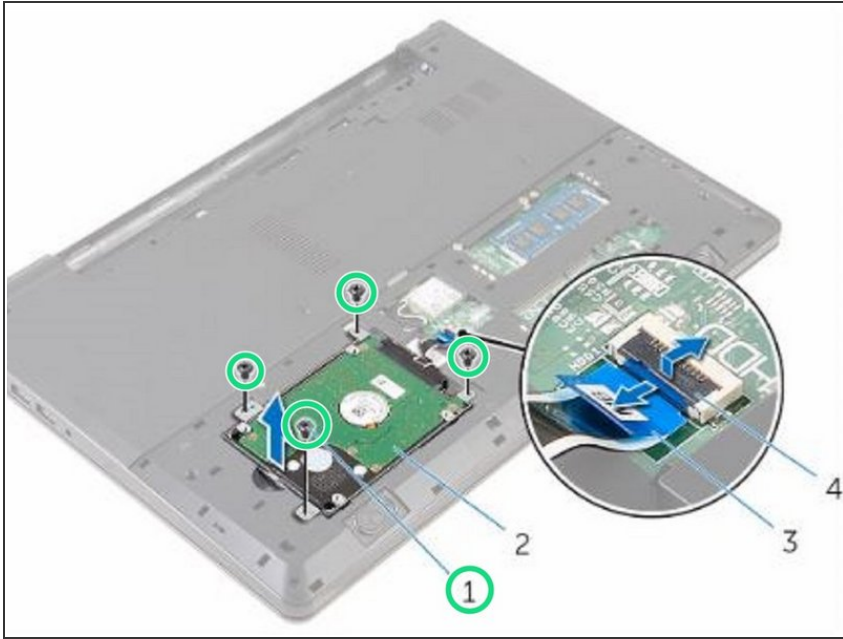
- Replace the screws that secure the hard-drive bracket to the hard drive.

Step 8 — Sliding the Hard-Drive Assembly



- Slide the hard-drive assembly in the computer base and align the screw holes on the hard-drive assembly with the screw holes on the computer base.

Step 9 — Replace the Screws



- Replace the screws that secure the hard-drive assembly to the computer base.