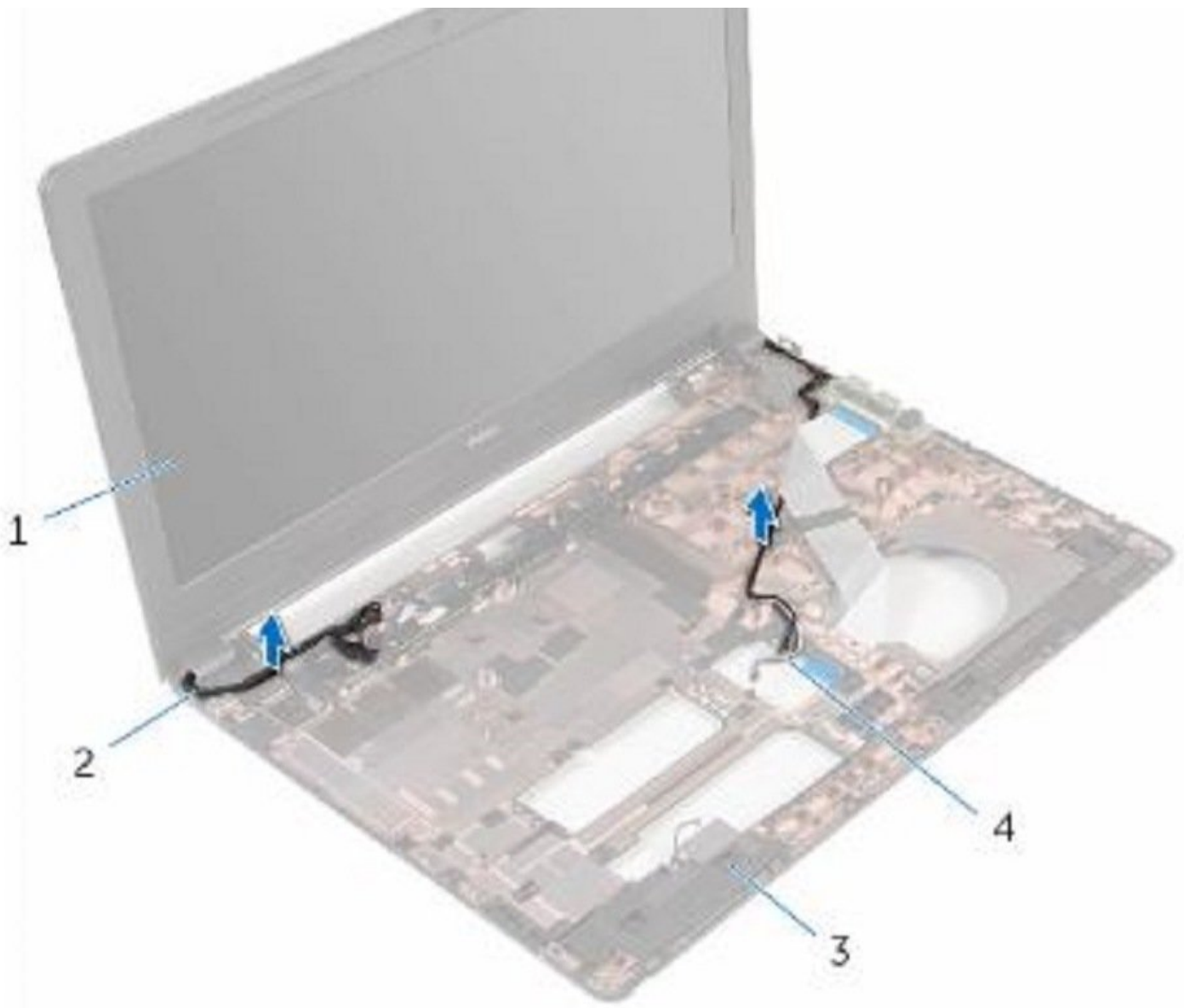




Dell Inspiron 15 3559 Display Assembly Replacement

Written By: Terrence15



INTRODUCTION

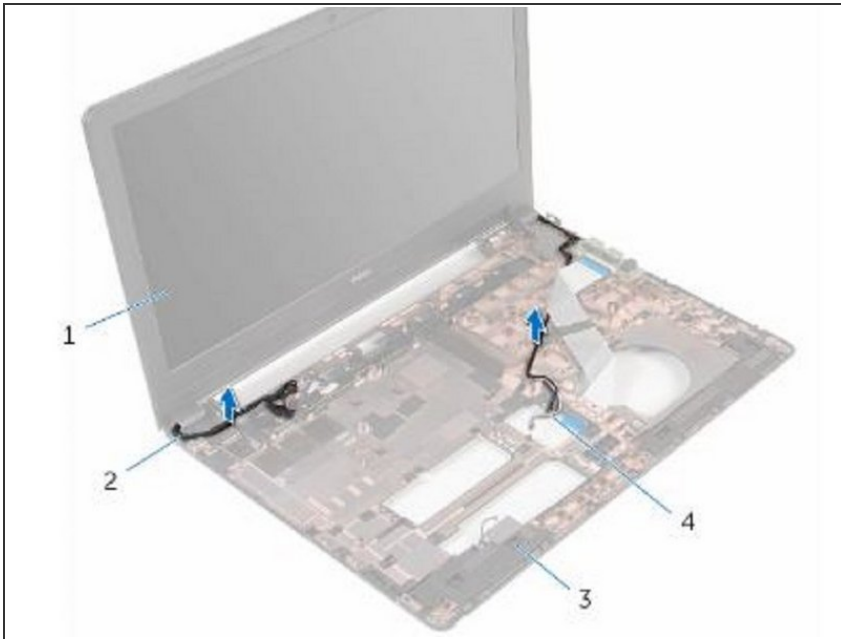
In this guide, we will show you how to remove and replace the Display Assembly.



TOOLS:

- [Phillips #0 Screwdriver](#) (1)
-

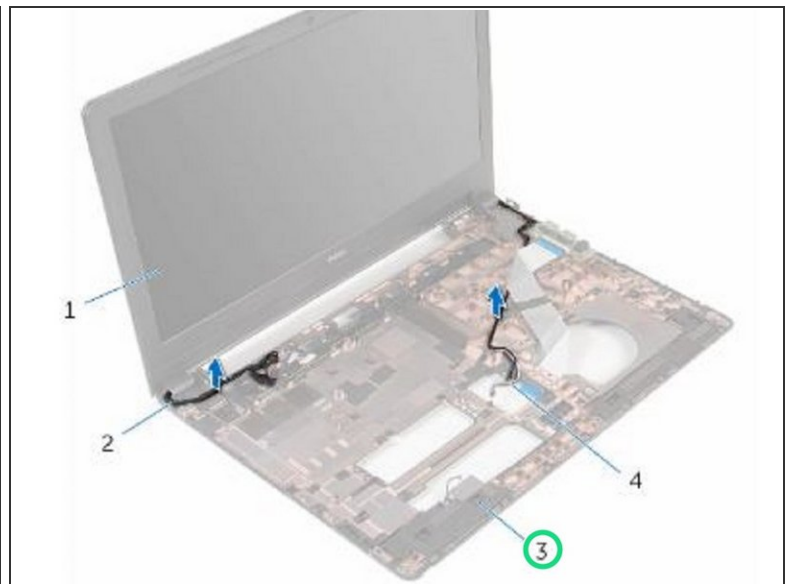
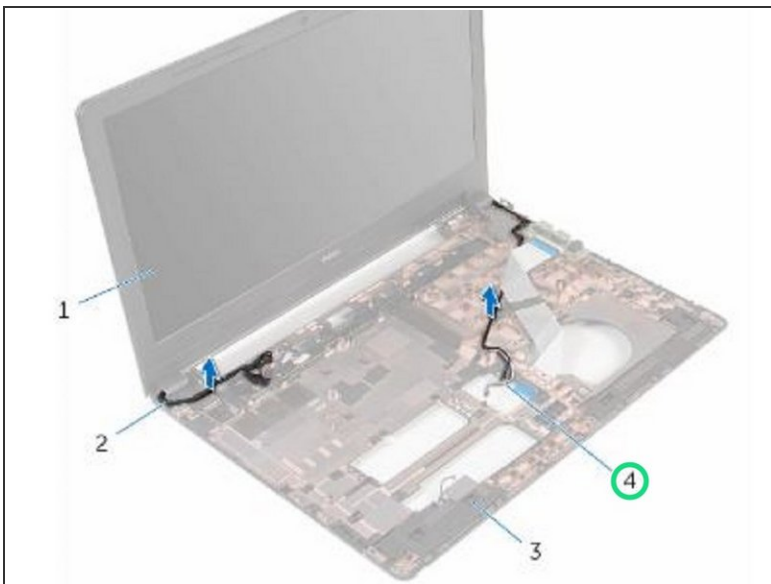
Step 1 — Turn the Computer Over



⚠ WARNING: Before working inside your computer, read the safety information that shipped with your computer and follow the steps in [Before Working Inside Your Computer](#). After working inside your computer, follow the instructions in [After Working Inside Your Computer](#).

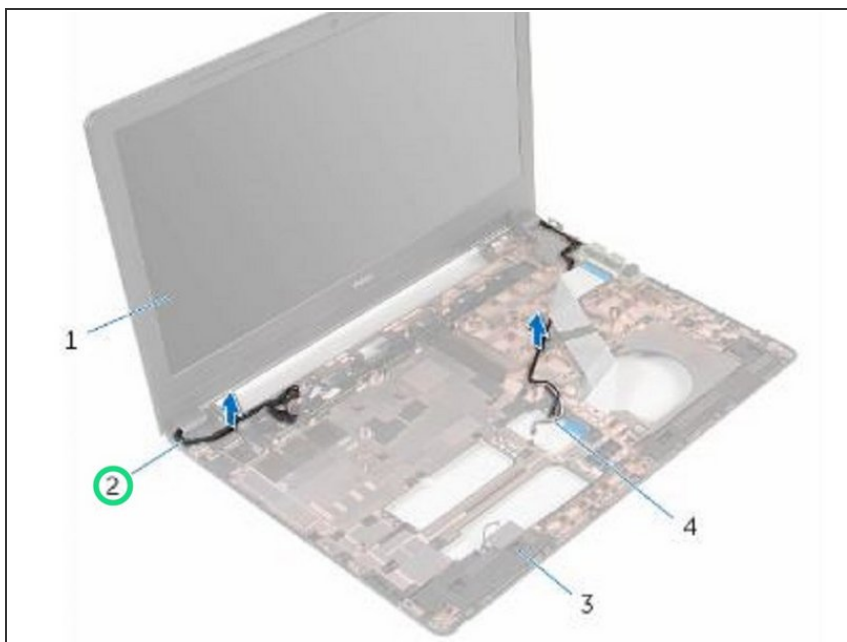
- Turn the computer over and open the display as far as possible.

Step 2 — Noting the Cables



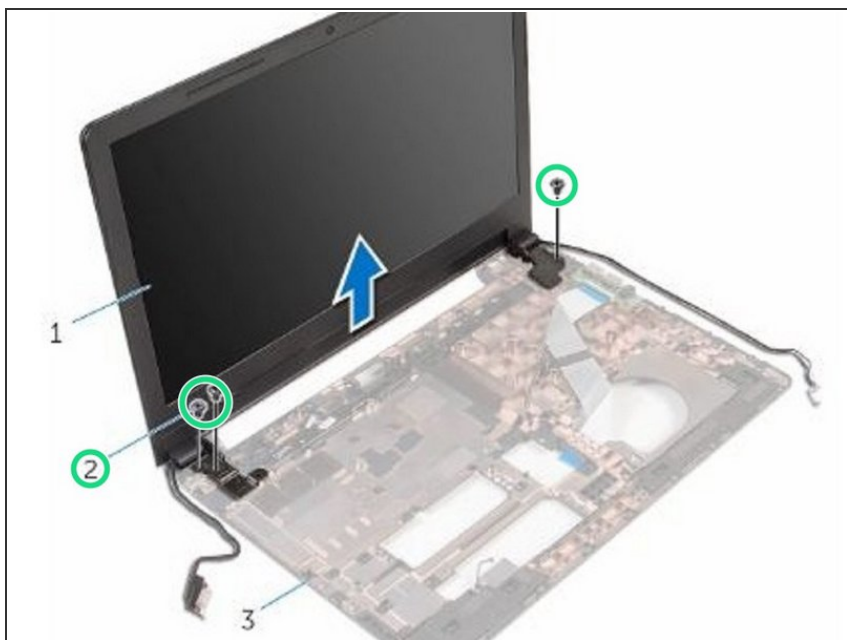
- Note the antenna cable routing and remove the antenna cables from its routing guides on the computer base.

Step 3 — Note the Display Cable Routing



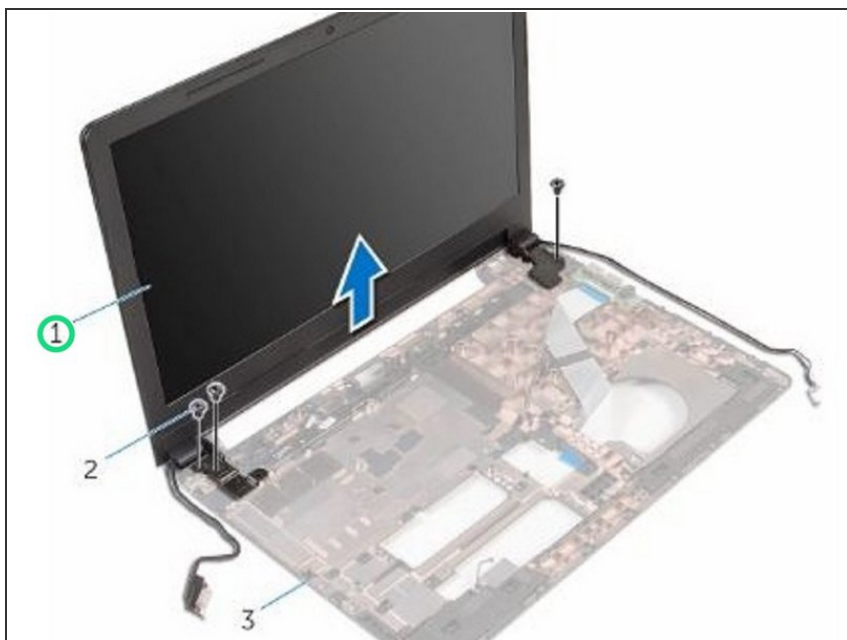
- Note the display cable routing and remove the cable from its routing guides on the computer base.

Step 4 — Remove the Screws



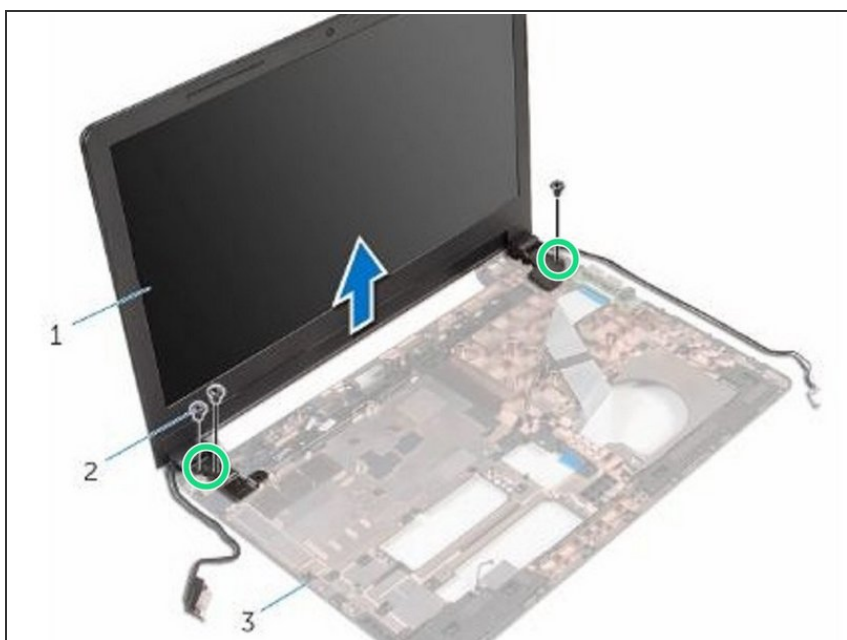
- Remove the screws that secure the display hinges to the computer base.

Step 5 — Lifting the Display Assembly



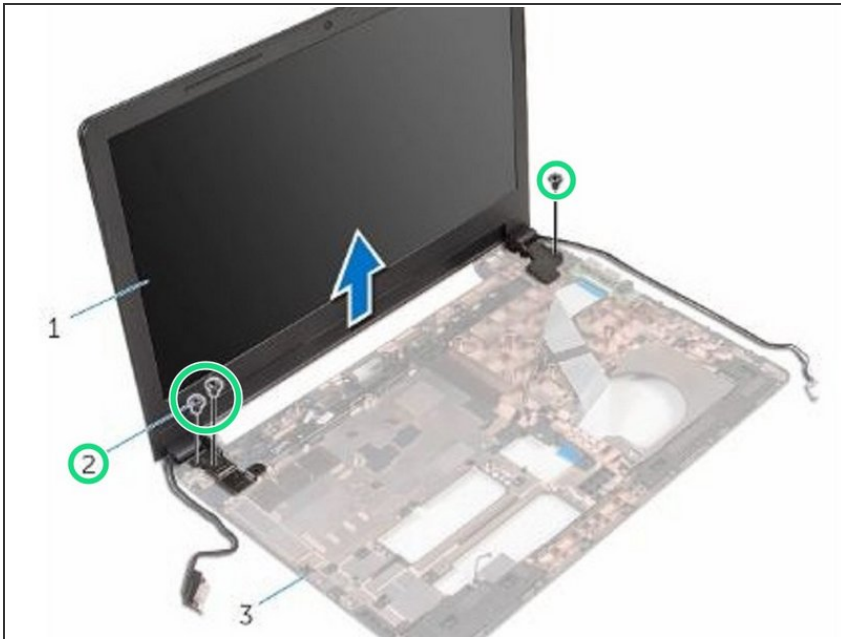
- Carefully lift the display assembly off the computer base.

Step 6 — Installing the new Display Assembly



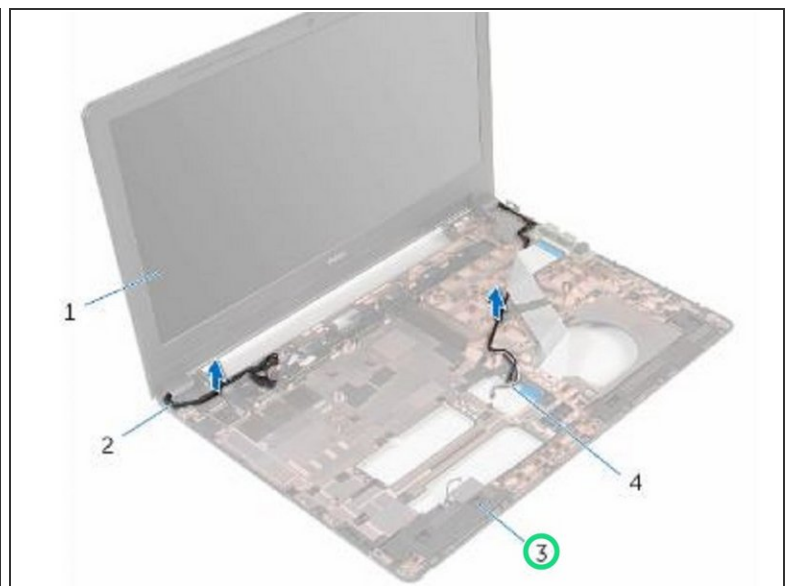
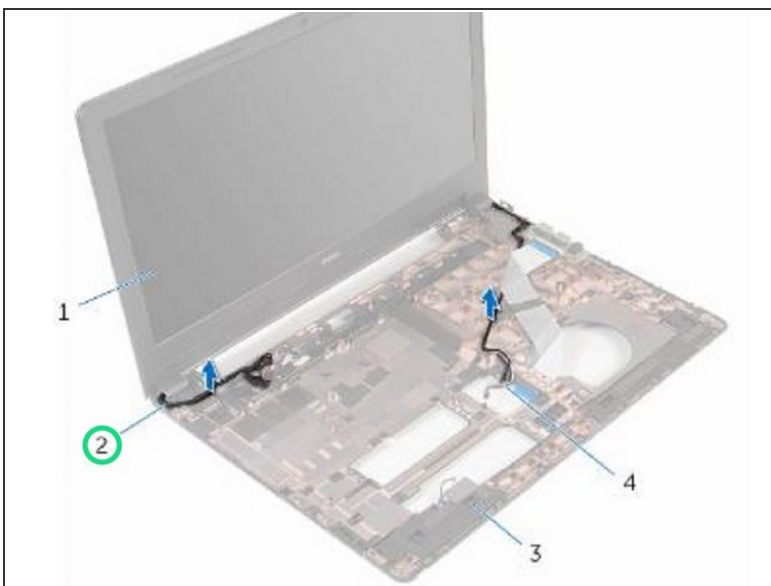
- Align the screw holes on the display hinges with the screw holes on the computer base.

Step 7 — Replace the Screws



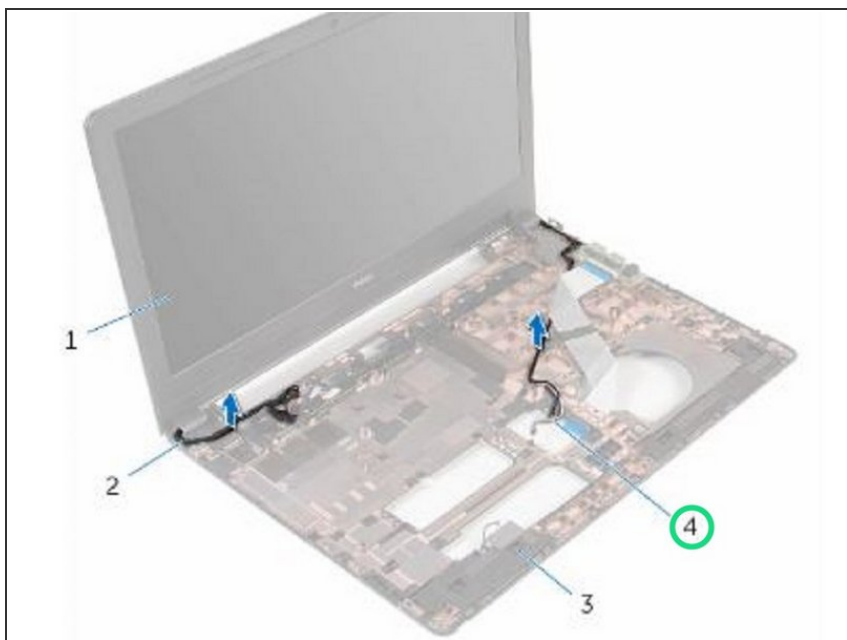
- Replace the screws that secure the display hinges to the computer base.

Step 8 — Route the Display Cable



- Route the display cable through its routing guides on the computer base.

Step 9 — Routing the Antenna Cables



- Route the antenna cables through its routing guides and slide the antenna cables through the slot on the computer base.

Step 10 — Close the Display



- Close the display and turn the computer over.