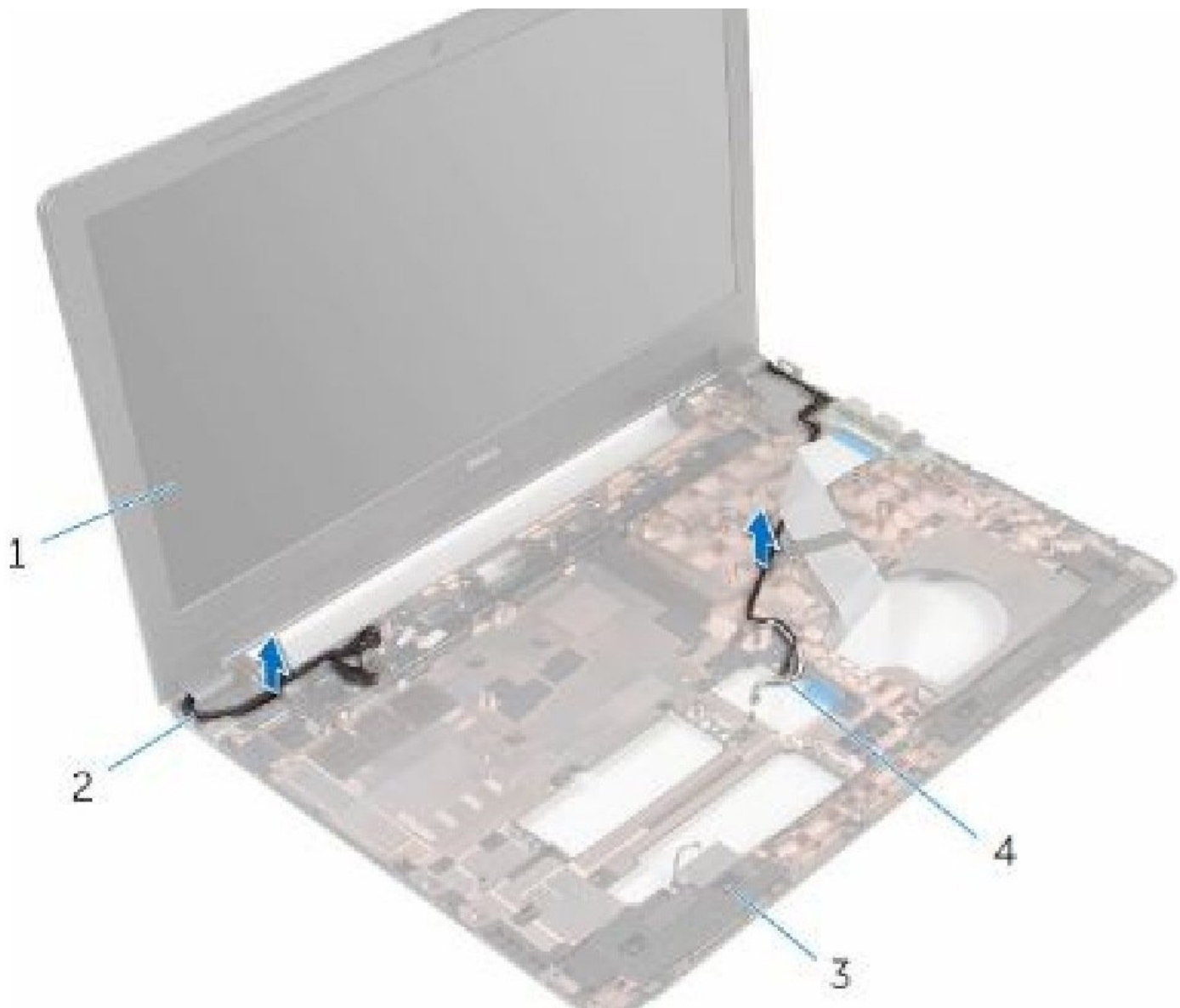




# Dell Inspiron 15 3568 Display Assembly Replacement

Written By: Terrence15



---

## INTRODUCTION

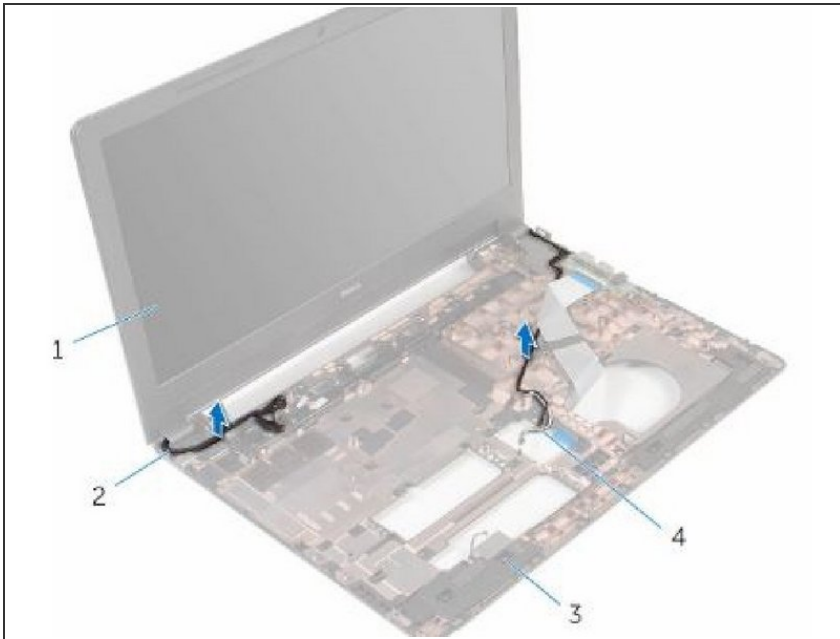
In this guide, we will be showing you how to remove and replace the Display Assembly.



### TOOLS:

- [Phillips #0 Screwdriver](#) (1)
-

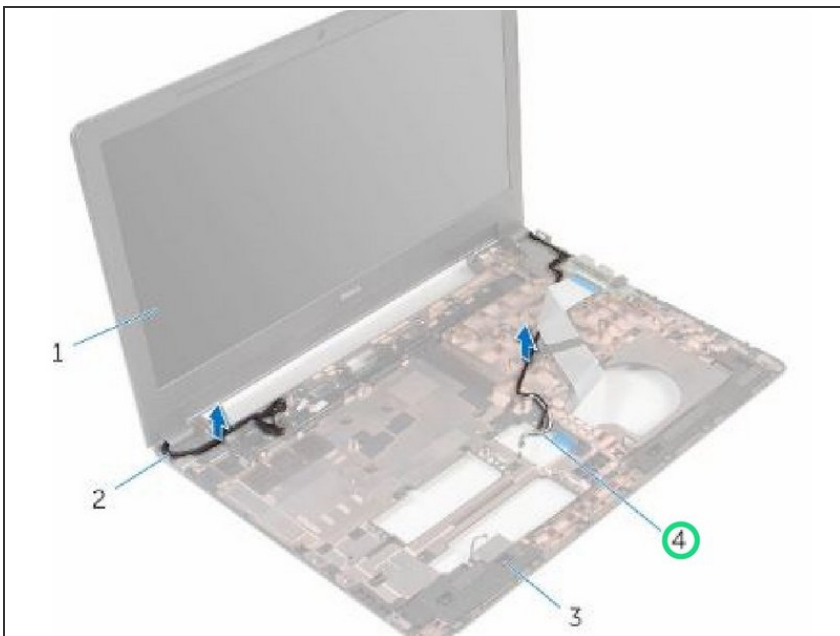
## Step 1 — Open the Display



**⚠ WARNING:** Before working inside your computer, read the safety information that shipped with your computer and follow the steps in [Before Working Inside Your Computer](#). After working inside your computer, follow the instructions in [After Working Inside Your Computer](#).

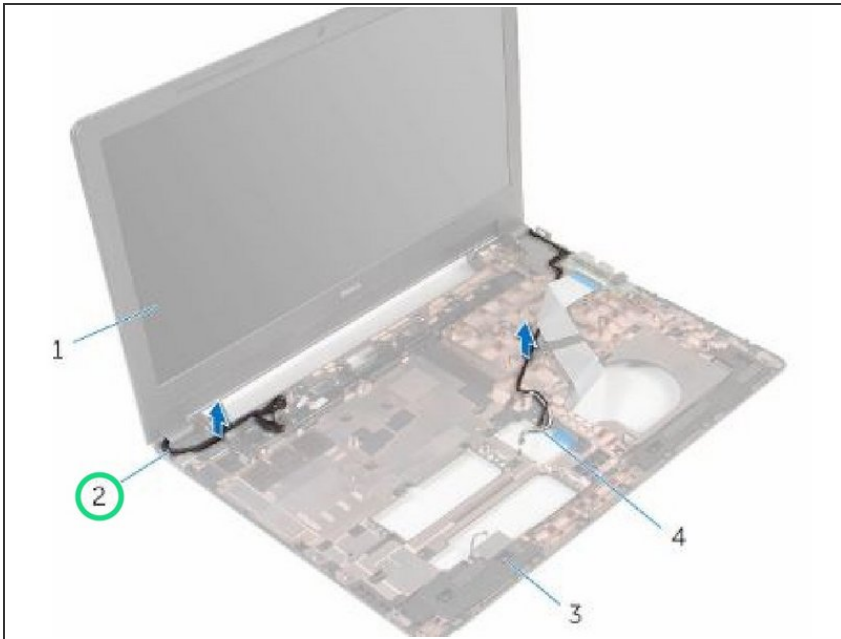
- Turn the computer over and open the display as far as possible.

## Step 2 — Note the Antenna Cable



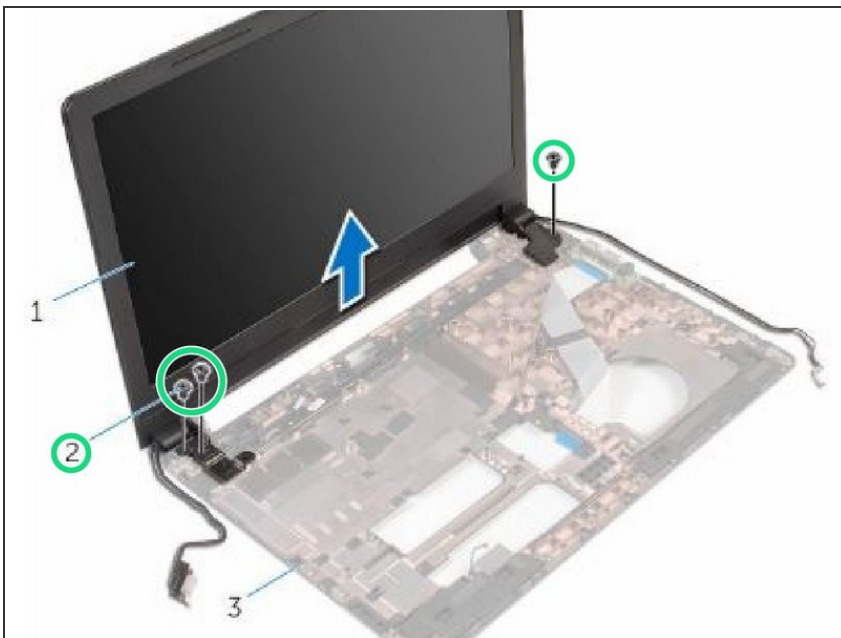
- Note the antenna cable routing and remove the antenna cables from its routing guides on the computer base.

### Step 3 — Remove the Cable



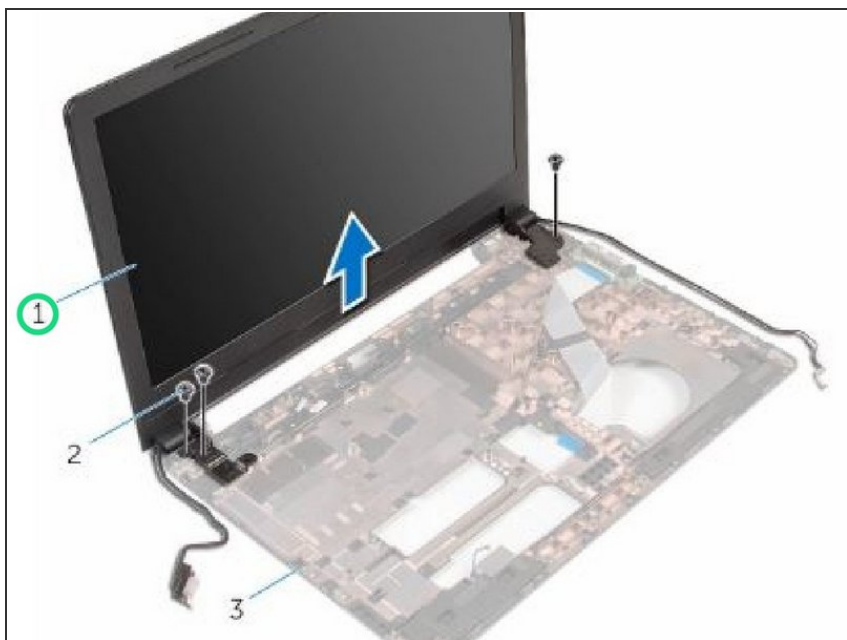
- Note the display cable routing and remove the cable from its routing guides on the computer base.

### Step 4 — Remove the Screws



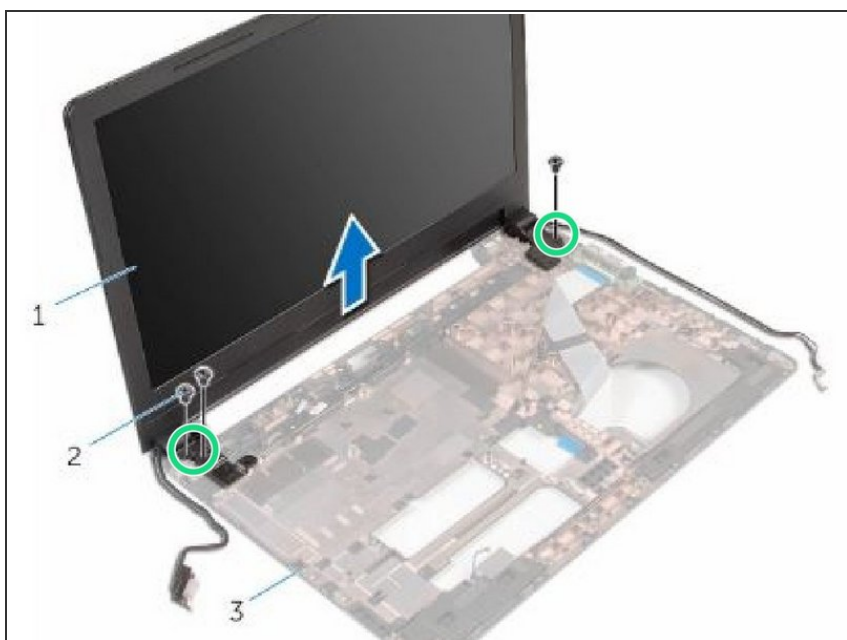
- Remove the screws that secure the display hinges to the computer base.

## Step 5 — Lifting the Display Assembly



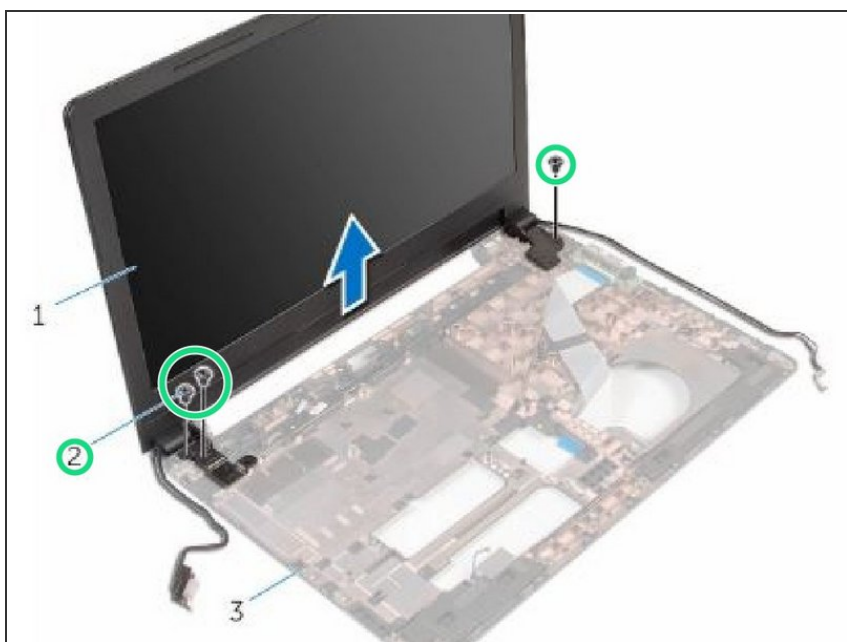
- Carefully lift the display assembly off the computer base.

## Step 6 — Align the Screw Holes



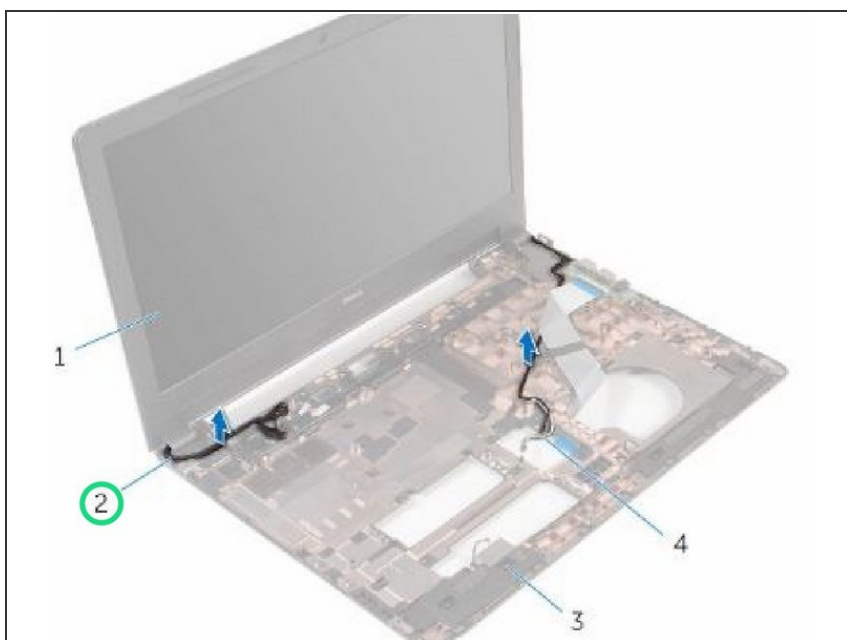
- Align the screw holes on the display hinges with the screw holes on the computer base.

## Step 7 — Replace the Screws



- Replace the screws that secure the display hinges to the computer base.

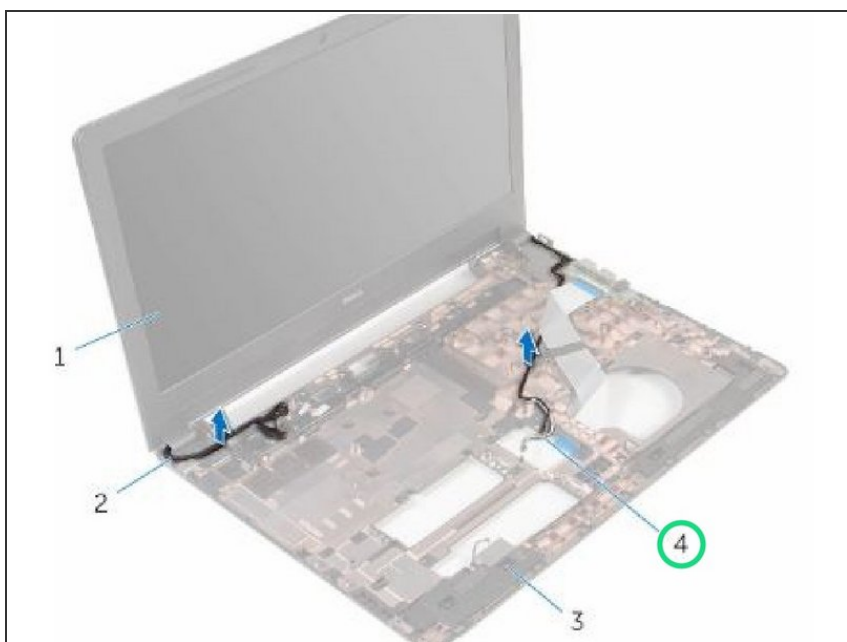
## Step 8 — Route the Display Cable



- Route the display cable through its routing guides on the computer base.



## Step 9 — Routing the Antenna Cables



- Route the antenna cables through its routing guides and slide the antenna cables through the slot on the computer base.

## Step 10 — Close the Display



- Close the display and turn the computer over.